

# Education

# 5

Introductory text and technical notes	99
<b>Table 5.1</b> Persons in full-time education, 1965-2000	103
<b>Graph</b> <i>Persons in full-time education</i>	103
<b>Table 5.2</b> Persons receiving full-time education and estimated participation rates for ages 15-24, 2000	104
<b>Graph</b> <i>Full-time education participation rate by sex for ages 15-24</i>	104
<b>Table 5.3</b> Voted expenditure by sector for financial year ended 31 December 1999	105
<b>Table 5.4</b> Pupils in first level schools classified by standard	105
<b>Table 5.5</b> Teaching posts in first level schools on 30 June	106
<b>Table 5.6</b> Pupils in first level schools (ordinary classes) by sex category of schools	106
<b>Table 5.7</b> Pupils and teachers in first level schools by class size, 1999/2000	107
<b>Table 5.8</b> Second level pupils classified by type of school	107
<b>Graph</b> <i>Enrolments in second level schools – % change by school type</i>	107
<b>Table 5.9</b> Teachers in secondary, vocational and community schools	108
<b>Table 5.10</b> Second level state examination candidates	108
<b>Graph</b> <i>Leaving Certificate students by sex</i>	108
<b>Table 5.11</b> Pupils in all second level schools by Leaving Certificate subject, 2000	109

<b>Table 5.12</b>	Leaving Certificate candidates taking selected subjects at ordinary level	110
<b>Graph</b>	<i>Leaving Certificate students taking most popular subjects at ordinary level</i>	110
<b>Table 5.13</b>	Leaving Certificate candidates taking selected subjects at higher level	111
<b>Table 5.14</b>	Leaving Certificate ordinary level grades for most popular subjects, 2000	112
<b>Table 5.15</b>	Leaving Certificate higher level grades for most popular subjects, 2000	112
<b>Table 5.16</b>	Educational institutions	113
<b>Table 5.17</b>	Ages of children in special schools for young offenders, 2000	113
<b>Graph</b>	<i>Grade distribution of selected Leaving Certificate higher level subjects, 2000</i>	113
<b>Table 5.18</b>	Pupils conveyed and cost of school transport service scheme, 1998-1999	114
<b>Table 5.19</b>	Participation in third level education, 2001/2002	114

# 5

## *Education*

### **Introduction**

**T**he statistics in this chapter have been obtained from the annual statistical reports of the Department of Education and Science and the Higher Education Authority. The data include details of participation in and expenditure on first, second and third level education.

### **Persons in education**

The numbers of students at first level reached 576,600 in 1985, but they have fallen substantially since then. The number at this level in 2000, represents 77% of the figure recorded in 1985. In the case of second level students, the participation level rose strongly from 1965 until 1995, but then the fall in the birth rate in the early 1980s began to have an effect. Over the period 1965-2000 there has been an increase of more than 500% in the third level student population. The most substantial increases occurred when just over 56,000 extra places were created over the period between 1990 and 2000.

Participation rates for males and females differ substantially over the age group 15-24. At age 15, only a slightly greater proportion of females are in full-time education but then the gap widens with the largest difference being seen in the 18-19 age group. This difference becomes slight again at ages 22 to 24.

Social Sciences, Business and Law accounts for the largest proportion of first year enrolments at third level with 28% of all enrolments for the academic year 2001-2002. Science, Mathematics and Computing (16%), Engineering, Manufacturing and Construction (15%), and Humanities and Arts (14%), also represent significant proportions of first year enrolments for this year.

**Table 5.1**

The information in this table refers to all Aided Institutions and those Non-Aided/Private Institutions who made student returns to the Department.

**Table 5.9**

Only teachers paid from funds provided by the Department of Education and Science are included in this table.

Part-time teaching staff includes job-sharers, eligible part-time teachers and other part-time teachers.

The data in respect of Vocational schools relate to day courses only.

**Table 5.11**

The information in this table refers to the number of second level pupils taking individual subjects in the Leaving Certificate programme.

**Table 5.12**

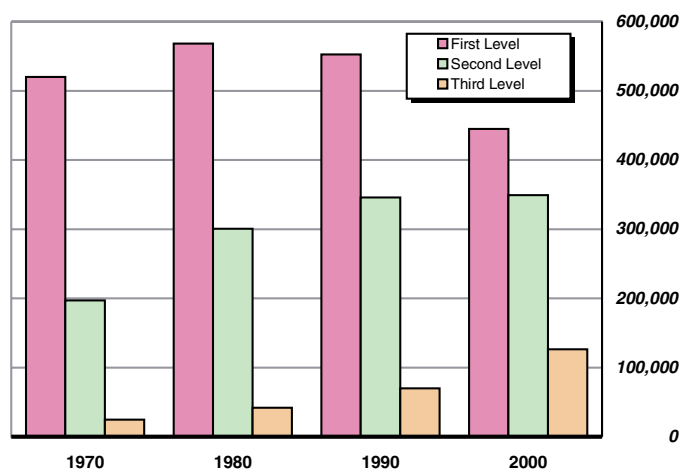
The percentages in this table are the proportion of all Leaving Certificate examination candidates who took a particular subject at ordinary level.

**Table 5.1 Persons in full-time education, 1965-2000**

Number

Year	First level	Second level	Third level
1965	504,865	142,983	20,698
1970	520,129	197,142	24,496
1975	550,078	270,956	33,148
1980	568,364	300,601	41,928
1985	576,576	338,207	55,088
1990	552,528	345,941	69,988
1995	485,923	373,665	102,662
1999	451,152	358,060	122,395
2000	444,782	349,274	126,300

Source: Department of Education and Science, Annual Statistical Report

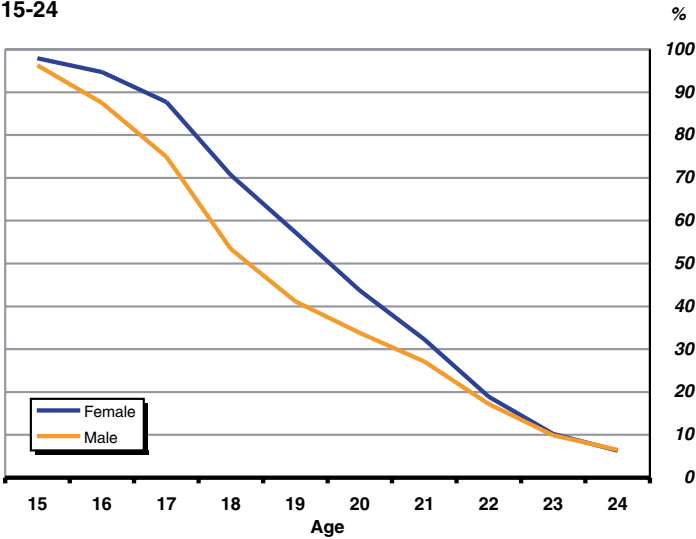
**Persons in full-time education**

**Table 5.2      Persons receiving full-time education and estimated participation rates for ages 15-24, 2000**

Age	In full-time education			As % of population	
	Male	Female	Total	Male	Female
15	31,497	30,167	61,664	96.3	97.9
16	29,648	30,495	60,143	87.5	94.7
17	26,452	29,480	55,932	74.9	87.7
18	18,888	23,694	42,582	53.4	70.7
19	14,581	19,150	33,731	41.2	57.3
20	11,771	14,903	26,674	33.8	43.7
21	8,819	10,640	19,459	27.1	32.3
22	5,509	5,916	11,425	17.2	18.9
23	3,121	3,131	6,252	9.9	10.2
24	2,054	1,988	4,042	6.5	6.3

Source: Department of Education and Science, Annual Statistical Report

**Full-time education participation rate by sex for ages 15-24**



**Table 5.3 Voted expenditure by sector for financial year ended 31 December 1999**

€m

Sector	Current	Capital	Total
First level education	1,072.7	78.9	1,151.6
Second level education	1,280.5	117.5	1,398.0
Third level education	848.7	69.7	918.4
Office of the Minister for Education	159.9	96.2	256.1
<b>Gross expenditure</b>	<b>3,361.8</b>	<b>362.3</b>	<b>3,724.1</b>
Appropriations In Aid	229.8	—	229.8
<b>Net expenditure</b>	<b>3,132.0</b>	<b>362.3</b>	<b>3,494.3</b>

Source: Department of Education and Science, Annual Statistical Report

**Table 5.4 Pupils in first level schools classified by standard**

Number

Standard	1995/96	1996/97	1997/98	1998/99	1999/2000
Infants standard	110,916	110,345	107,496	104,123	103,133
First standard	54,014	54,044	54,558	53,892	51,659
Second standard	57,506	54,057	53,982	54,493	53,851
Third standard	59,207	57,374	53,973	53,926	54,505
Fourth standard	59,713	59,187	57,258	53,890	53,828
Fifth standard	61,052	59,876	59,140	57,292	54,048
Sixth standard	62,049	60,054	58,965	58,346	56,647
Other standard	1,397	1,157	987	773	668
Special schools	7,652	7,536	7,409	7,386	7,228
Pupils with special needs in ordinary first level schools	5,186	5,998	7,077	8,412	8,743
<b>Total pupils</b>	<b>478,692</b>	<b>469,628</b>	<b>460,845</b>	<b>452,533</b>	<b>444,310</b>

Source: Department of Education and Science, Annual Statistical Report

TABLE 5.3

TABLE 5.4



**Table 5.5 Teaching posts in first level schools on 30 June**

					<i>Number</i>
<b>Sex</b>	<b>1996</b>	<b>1997</b>	<b>1998</b>	<b>1999</b>	<b>2000</b>
Male	4,681	4,568	4,522	4,498	4,370
Female	16,371	16,467	16,578	17,002	17,480
<b>Total</b>	<b>21,052</b>	<b>21,035</b>	<b>21,100</b>	<b>21,500</b>	<b>21,850</b>

Source: Department of Education and Science, Annual Statistical Report

**Table 5.6 Pupils in first level schools (ordinary classes) by sex category of schools**

					<i>Number</i>
<b>Sex category of school</b>	<b>1995/96</b>	<b>1996/97</b>	<b>1997/98</b>	<b>1998/99</b>	<b>1999/2000</b>
<b>Single sex</b>	<b>114,474</b>	<b>108,975</b>	<b>104,854</b>	<b>100,248</b>	<b>97,953</b>
Junior schools	4,486	4,059	4,012	3,889	3,993
Senior schools	30,324	29,070	27,472	25,609	24,116
All-through schools	79,664	75,846	73,370	70,750	69,844
<b>Single sex with mixed junior standards</b>	<b>42,156</b>	<b>40,765</b>	<b>39,628</b>	<b>38,039</b>	<b>34,688</b>
<b>Mixed</b>	<b>309,224</b>	<b>306,354</b>	<b>301,877</b>	<b>298,448</b>	<b>295,698</b>
Junior schools	26,655	26,571	25,553	23,957	22,893
Senior schools	21,153	20,431	19,509	18,734	18,006
All-through schools	261,416	259,352	256,815	255,757	254,799
<b>TOTAL</b>	<b>465,854</b>	<b>456,094</b>	<b>446,359</b>	<b>436,735</b>	<b>428,339</b>

Source: Department of Education and Science, Annual Statistical Report

**Table 5.7 Pupils and teachers in first level schools by class size, 1999/2000**

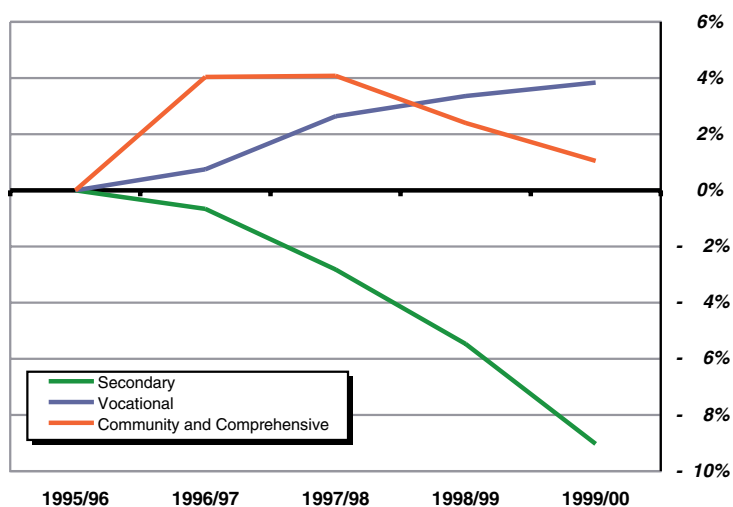
Teaching teachers in school	Class size				Total
	0-19	20-29	30-39	40 and over	
1	397	63	–	–	460
2	13,785	11,906	741	–	26,432
3	8,415	27,112	4,126	–	39,653
4	5,784	31,454	8,167	120	45,525
5	3,059	22,580	7,722	46	33,407
6	2,061	17,906	6,567	–	26,534
7	2,181	15,460	7,433	–	25,074
8	1,841	18,166	13,786	40	33,833
9	1,503	11,687	9,226	162	22,578
10 and over	10,597	92,798	71,125	323	174,843
<b>Total</b>	<b>49,623</b>	<b>249,132</b>	<b>128,893</b>	<b>691</b>	<b>428,339</b>

Source: Department of Education and Science, Annual Statistical Report

**Table 5.8 Second level pupils classified by type of school**

Category	Number				
	1995/96	1996/97	1997/98	1998/99	1999/2000
Secondary	223,605	222,139	217,303	211,369	203,418
Vocational	94,809	95,517	97,309	97,998	98,451
Community and Comprehensive	51,451	53,528	53,548	52,684	51,991
<b>Total</b>	<b>369,865</b>	<b>371,184</b>	<b>368,160</b>	<b>362,051</b>	<b>353,860</b>

Source: Department of Education and Science, Annual Statistical Report

**Enrolments in second level schools - % change by school type**

**Table 5.9 Teachers in secondary, vocational and community schools**

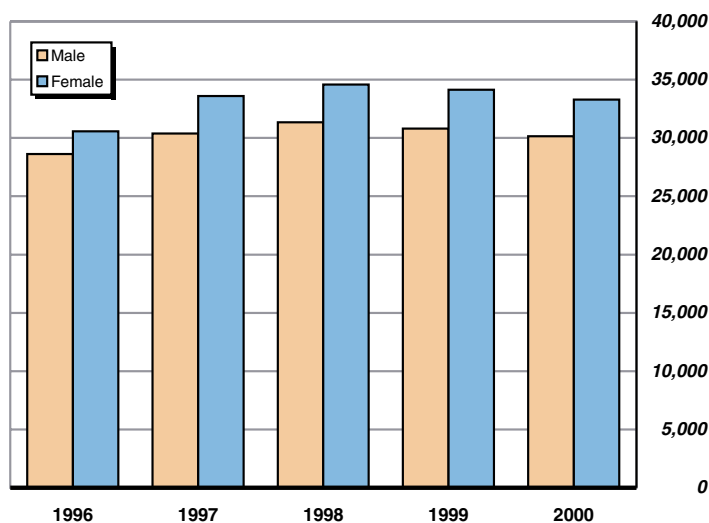
					Number
Category	1995/96	1996/97	1997/98	1998/99	1999/2000
<b>Secondary</b>					
Full-time	12,736	12,694	12,655	12,180	12,418
Full-time equivalent of part-time	646	601	604	1,043	1,175
<b>Vocational</b>					
Full-time	5,229	5,258	5,290	5,497	5,625
Full-time equivalent of part-time	1,203	1,130	1,226	1,105	1,156
<b>Community and Comprehensive</b>					
Full-time	2,922	3,047	3,121	3,129	3,058
Full-time equivalent of part-time	367	508	414	481	534
<b>TOTAL</b>					
Full-time	20,887	20,999	21,066	20,806	21,101
Full-time equivalent of part-time	2,216	2,239	2,244	2,629	2,865

Source: Department of Education and Science, Annual Statistical Report

**Table 5.10 Second level state examination candidates**

					Number
Examination	1996	1997	1998	1999	2000
<b>Junior Certificate</b>	<b>68,064</b>	<b>67,053</b>	<b>65,608</b>	<b>62,659</b>	<b>61,470</b>
Male	34,312	33,740	33,137	31,773	31,302
Female	33,752	33,313	32,471	30,886	30,168
<b>Leaving Certificate</b>	<b>59,176</b>	<b>63,987</b>	<b>65,922</b>	<b>64,936</b>	<b>63,419</b>
Male	28,616	30,380	31,333	30,811	30,138
Female	30,560	33,607	34,589	34,125	33,281
<b>ALL EXAMINATION CANDIDATES</b>	<b>127,240</b>	<b>131,040</b>	<b>131,530</b>	<b>127,595</b>	<b>124,889</b>
Male	62,928	64,120	64,470	62,584	61,440
Female	64,312	66,920	67,060	65,011	63,449

Source: Department of Education and Science, Annual Statistical Report

**Leaving Certificate students by sex**

**Table 5.11 Pupils in all second level schools by Leaving Certificate subject, 2000**

Number

Subject	Number of pupils			% studying subject	
	Boys	Girls	Total	Boys	Girls
Irish	54,643	58,085	112,728	97	97
English	55,850	59,338	115,188	99	99
Latin	258	145	403	0	0
Greek	16	–	16	0	–
Hebrew Studies	5	9	14	0	0
French	31,777	42,926	74,703	56	72
German	9,366	11,735	21,101	17	20
Italian	225	216	441	0	0
Spanish	1,461	2,107	3,568	3	4
History	14,621	11,355	25,976	26	19
Geography	31,723	27,763	59,486	56	46
Mathematics	56,076	59,474	115,550	100	100
Applied Maths	1,772	453	2,225	3	1
Physics	13,528	4,293	17,821	24	7
Chemistry	6,212	7,016	13,228	11	12
Physics and Chemistry	1,508	627	2,135	3	1
Agricultural Science	5,095	1,244	6,339	9	2
Biology	17,525	34,673	52,198	31	58
Agricultural Economics	171	90	261	0	0
Engineering	10,887	609	11,496	19	1
Technical Drawing	13,808	1,092	14,900	25	2
Construction Studies	18,331	1,304	19,635	33	2
Home Economics (S & S)	5,626	34,337	39,963	10	57
Home Economics (General)	100	338	438	0	1
Accounting	8,002	8,917	16,919	14	15
Business Organisation	21,783	26,713	48,496	39	45
Economics	6,108	3,681	9,789	11	6
Economic History	139	72	211	0	0
Art (with Design option)	5,146	6,876	12,022	9	12
Art (with Craft option)	3,081	5,064	8,145	5	8
Music A	–	–	–	–	–
Music B	–	–	–	–	–
Physical Education	31,831	37,107	68,938	57	62
Classical Studies	542	506	1,048	1	1
Computer Studies	16,267	19,751	36,018	29	33
Keyboarding	81	272	353	0	0
Choir	511	5,072	5,583	1	8
Orchestra	19	479	498	0	1
Religious Education	48,035	53,288	101,323	85	89
Typewriting	346	1,086	1,432	1	2
Health Education	702	2,571	3,273	1	4
Speech & Drama	145	2,007	2,152	0	3
Civics	958	2,598	3,556	2	4
Music	1,134	5,093	6,227	2	9
<b>Leaving Certificate Programme</b>	<b>56,252</b>	<b>59,744</b>	<b>115,996</b>		

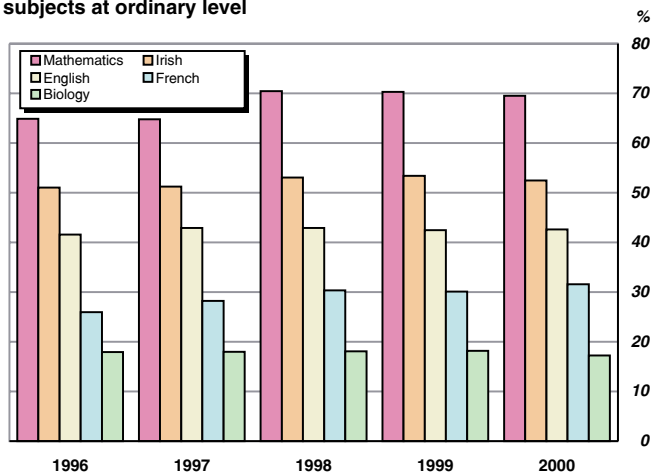
Source: Department of Education and Science, Annual Statistical Report

Table 5.12 Leaving Certificate candidates taking selected subjects at ordinary level

	%				
Subject	1996	1997	1998	1999	2000
Mathematics	65	65	70	70	70
Irish	51	51	53	53	52
English	42	43	43	42	43
French	26	28	30	30	32
Biology	18	18	18	18	17
Geography	11	13	13	11	13
Business Organisation	14	15	15	11	13
Home Economics (S & S)	10	11	10	10	10
Mathematics (Alt/Ord)	9	10	9	9	10
Irish (Foundation)	8	9	9	9	9
History	9	9	9	8	8
German	6	6	6	6	6
Technical Drawing	7	7	6	6	6
Art	5	5	5	5	5
Accounting	5	5	5	5	5
Physics	5	4	5	5	5
Construction Studies	4	4	4	4	4
Engineering	3	3	3	3	2
Economics	2	2	2	2	2
Chemistry	2	2	2	2	2
Agricultural Science	1	1	1	1	1
Spanish	1	1	1	1	1
Music	—	—	—	1	1
Physics and Chemistry	1	1	1	1	0

Source: Department of Education and Science, Annual Statistical Report

Leaving Certificate Students taking most popular subjects at ordinary level



**Table 5.13 Leaving Certificate candidates taking selected subjects at higher level**

%

Subject	1996	1997	1998	1999	2000
English	48	48	53	53	53
Geography	28	30	33	36	37
Business Organisation	20	20	23	28	29
Irish	23	25	28	27	28
French	27	25	27	29	28
Biology	29	27	30	28	27
Home Economics (S & S)	25	24	27	27	25
Mathematics	16	16	17	17	18
History	14	13	14	13	13
Art	10	11	11	11	11
Construction Studies	8	9	10	10	11
German	11	11	11	11	11
Physics	11	10	10	10	10
Accounting	11	9	10	10	9
Chemistry	10	9	9	9	9
Economics	6	6	6	6	6
Engineering	5	5	5	5	6
Technical Drawing	5	5	5	6	6
Music	-	-	-	4	5
Agricultural Science	3	3	3	3	4
Applied Mathematics	2	2	2	2	2
Spanish	1	1	2	2	1
Physics and Chemistry	1	1	1	2	1
Classical Studies	1	1	1	1	1
Music and Musicianship A	1	1	2	-	-
Music and Musicianship B	1	1	1	-	-

Source: Department of Education and Science, Annual Statistical Report

**Table 5.14 Leaving Certificate ordinary level grades for most popular subjects, 2000**

%

Subject	Grade				
	A	B	C	D	E or lower
Mathematics	14	26	26	21	13
Irish	3	35	36	20	6
English	4	20	42	29	6
French	1	28	41	25	5
Biology	4	20	27	27	22
Geography	7	32	35	21	5
Business Organisation	10	34	34	18	4
Home Economics (S & S)	2	19	37	32	10
Mathematics (Alt/Ord)	8	33	33	19	7
Irish (Foundation)	6	36	39	17	3
History	23	19	17	18	24
German	3	30	38	22	7
Technical Drawing	16	28	25	21	10
Art	3	22	44	25	5
Accounting	17	24	22	19	19
Physics	11	26	28	20	15
Construction Studies	1	20	49	25	6
Engineering	2	27	42	24	5
Economics	12	32	27	22	6
Chemistry	14	36	29	15	7

Source: Department of Education and Science, Annual Statistical Report

**Table 5.15 Leaving Certificate higher level grades for most popular subjects, 2000**

%

Subject	Grade				
	A	B	C	D	E or lower
English	7	20	39	32	3
Geography	7	27	38	23	4
Business Organisation	7	26	33	26	9
Irish	9	32	39	19	1
French	9	23	37	28	4
Biology	9	27	33	23	8
Home Economics (S & S)	8	25	34	26	8
Mathematics	14	28	32	21	5
History	11	25	32	23	9
Art	5	24	41	27	4
Construction Studies	6	38	43	13	1
German	13	31	37	18	2
Physics	16	29	27	20	8
Accounting	18	32	24	17	9
Chemistry	20	28	25	19	8
Economics	12	32	30	22	5
Engineering	9	33	36	19	3
Technical Drawing	16	27	30	22	6
Music	20	56	21	3	0
Agricultural Science	5	22	33	31	10

Source: Department of Education and Science, Annual Statistical Report

**Table 5.16 Educational institutions**

Number

Level	1989/1990	1994/95	1999/2000
First level	3,428	3,387	3,340
Second level	838	809	782
Third level	50	55	56
<b>Total</b>	<b>4,316</b>	<b>4,251</b>	<b>4,178</b>
of which aided by the Department of Education and Science	4,204	4,126	4,080

Source: Department of Education and Science, Annual Statistical Report

**Table 5.17 Ages of children in special schools for young offenders, 2000**

Number

Age	Committed		On remand		Health Act		Total	
	Boys	Girls	Boys	Girls	Boys	Girls	Boys	Girls
12	1	—	—	—	3	—	4	—
13	1	—	—	—	2	—	3	—
14	3	—	2	—	4	—	9	—
15	10	—	2	—	6	1	18	1
16	23	2	5	1	4	—	32	3
17 and over	37	5	3	3	—	—	40	8
<b>Total</b>	<b>75</b>	<b>7</b>	<b>12</b>	<b>4</b>	<b>19</b>	<b>1</b>	<b>106</b>	<b>12</b>

Source: Department of Education and Science, Annual Statistical Report

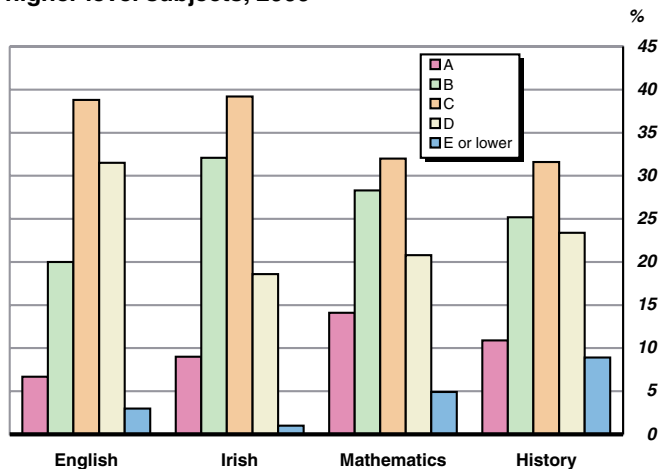
**Grade distribution of selected Leaving Certificate higher level subjects, 2000**

TABLE 5.16

TABLE 5.17



**Table 5.18 Pupils conveyed and cost of school transport service scheme, 1998-1999**

Level	1998		1999	
	Pupils conveyed	Expenditure	Pupils conveyed	Expenditure
		€m		€m
<b>First level</b>	<b>52,207</b>	<b>29.2</b>	<b>50,375</b>	<b>31.9</b>
Public scheduled services	2,066	0.39	1,861	0.4
Special school services	50,141	28.82	48,514	31.5
<b>Second level</b>	<b>91,909</b>	<b>26.5</b>	<b>84,972</b>	<b>27.5</b>
Public scheduled services	12,046	2.93	10,225	2.7
Special school services	79,863	23.61	74,747	24.8
<b>TOTAL</b>	<b>144,116</b>	<b>55.7</b>	<b>135,347</b>	<b>59.4</b>

Source: Department of Education and Science, Annual Statistical Report

**Table 5.19 Participation in third level education, 2001/2002**

Fields of education	First year enrolments	Diplomas and certificates awarded	Number	
			Primary degrees awarded	Post-graduate awards
General Programmes	879	221	170	123
Education	1,479	397	940	1,783
Humanities and Arts	6,974	1,132	3,711	945
Social Sciences, Business and Law	13,898	6,495	5,255	3,187
Science, Mathematics and Computing	8,073	3,108	3,628	1,898
Engineering, Manufacturing and Construction	7,486	3,285	2,042	547
Agriculture and Veterinary	722	233	286	124
Health and Welfare	4,461	1,496	1,508	1,143
Services	3,476	2,317	360	122
Combined	2,745	62	1,512	63
<b>Total</b>	<b>50,193</b>	<b>18,746</b>	<b>19,412</b>	<b>9,935</b>

Source: Higher Education Authority, Third Level Statistical Report