

# *Agriculture, Forestry and Fishing*

---

# 9

Introductory text	211
<b>Table 9.1</b> Area under selected crops	215
<b>Table 9.2</b> Number of holdings	215
<b>Table 9.3</b> Number of selected livestock	216
<b>Graph</b> <i>Number of cattle, sheep and pigs</i>	216
<b>Table 9.4</b> Area, yield and production of crops	217
<b>Table 9.5</b> Area under crops and pasture in June	218
<b>Graph</b> <i>Area under principal root crops</i>	218
<b>Table 9.6</b> Number of livestock in June	219
<b>Table 9.7</b> Number of livestock in December	220
<b>Table 9.8</b> Agricultural land sales	221
<b>Table 9.9</b> Agricultural labour input (persons)	221
<b>Table 9.10</b> Agricultural labour input (annual work units)	221
<b>Table 9.11</b> Output, input and income in agriculture	222-223
<b>Graph</b> <i>Total net subsidies and operating surplus</i>	222
<b>Graph</b> <i>Selected income indicators</i>	223
<b>Table 9.12</b> Agricultural output	224
<b>Table 9.13</b> Selected volume indices	225
<b>Table 9.14</b> Output of cattle and calves (number)	226

<b>Table 9.15</b>	Output of cattle and calves (value)	226
<b>Graph</b>	<i>Cattle, sheep and pig output at current producer prices</i>	226
<b>Table 9.16</b>	Output of pigs (number)	227
<b>Table 9.17</b>	Output of pigs (value)	227
<b>Table 9.18</b>	Output of sheep (number)	228
<b>Table 9.19</b>	Output of sheep (value)	228
<b>Table 9.20</b>	Agricultural output price index	229
<b>Table 9.21</b>	Agricultural input price index	229
<b>Graph</b>	<i>Annual Agricultural price indices</i>	229
<b>Table 9.22</b>	Average price of bullocks and heifers at auction marts	230
<b>Table 9.23</b>	Average price of sheep at auction marts	230
<b>Table 9.24</b>	Milk – price per litre paid by creameries to producers	230
<b>Table 9.25</b>	Cereal supply balance – principal cereals	231
<b>Table 9.26</b>	Meat supply balance	231
<b>Graph</b>	<i>Domestic uses of meat</i>	231
<b>Table 9.27</b>	Milk output and use (whole milk only)	232
<b>Table 9.28</b>	Livestock slaughterings	232
<b>Graph</b>	<i>Livestock slaughterings</i>	232
<b>Table 9.29</b>	Sea fish landings by species	233
<b>Table 9.30</b>	Sea fish landings by consumption category	234
<b>Table 9.31</b>	Aquaculture production	234
<b>Graph</b>	<i>Fish landings</i>	234
<b>Table 9.32</b>	Inland fish catches	235
<b>Table 9.33</b>	Sales of commercial and rod angling licences	235
<b>Table 9.34</b>	Coillte Teoranta-owned forest properties	235

# 9

## *Agriculture, Forestry and Fishing*

- The number of agricultural holdings in 2003 was 135,300 – less than a third of the number in 1855.
- In June 2004 there were just over 7 million cattle, 6.8 million sheep and 1.6 million pigs.
- The total area farmed in 2004 was 4.3 million hectares. Crops, fruit and horticulture accounted for 10% of that area, silage for 24%, hay for 4%, pasture for 51% and rough grazing for 11%.
- The average price per hectare of agricultural land was €16,261 in 2004 – up 44% on the 1999 price.
- In 2003, 245,500 persons worked in agriculture. This was 24,500 fewer than in 1999.
- Between 1995 and 2004 agricultural output prices fell by just under 8% while input prices rose by 21%.
- Sea fish landings in 2002 were worth €210m; aquaculture production was worth €117m.

## **Introduction**

**T**his chapter contains information on Irish agriculture. The statistics are mainly drawn from CSO surveys. The tables presented cover estimates of activity on farms (crop areas, livestock numbers, number of farm holdings and labour input); the quantities, prices and values of agricultural inputs and outputs; and some detailed figures on Ireland's fishery and forestry sectors.

## **Long term trends**

Tables 9.1 to 9.3 present a historical review of farm activity since 1847. There has been a huge decrease in the area under crops particularly oats and potatoes reflecting a change from horse drawn transport and a more varied diet especially increased consumption of meat. The number of farm holdings has declined from 419,500 in 1855 to 135,300 in 2003.

This decline is due to a number of factors: greater land ownership; increased mechanisation allowing larger farms to be operated; the migration of labour to urban areas and the change from subsistence farming to business farming. The number of horses and ponies decreased from 445,000 in 1847 to 73,000 in 2004. In contrast, the numbers of cattle, sheep and pigs have all more than trebled.

## **Some recent trends**

Cattle numbers increased during most of the 1990s, reaching a peak of 7.640 million in 1998, but have declined sharply since then.

Sheep numbers increased sharply during the late 1980s and early 1990s but have declined in recent years.

The price per hectare of agricultural land has risen each year (apart from a slight fall in 2002) to €16,261 in 2004 – just over 28% higher than in 2000 .

## **Farm workforce**

In 2003 around 245,500 persons did some farm work. Much of this was on a part-time or seasonal basis. It is generally acknowledged that today's farmers are increasingly dependent on household income earned from non-farming activities. The decline in the number of women working on farms has been relatively greater than that of men.

## **Income from farming**

Table 9.11 shows the value of agricultural income (operating surplus). In 2004 cattle (26.7%) and milk (28.2%) accounted for 54.9% of goods output at producer prices.

Table 9.11 also shows how agricultural income is largely dependent on subsidy payments. In 2004 net subsidies accounted for 66.1% of agricultural income compared to 68.2% in 2003. The cost of farm inputs (intermediate consumption) rose by 9.9% over the period 2000 to 2004.

## **Agriculture price indices**

Tables 9.20 and 9.21 show recent trends in the agricultural output and input price indices. In 2004 the total outputs price index was less than in 1995 while the total inputs price index was greater than in 1995. In particular, the input price indices for energy, fertilisers and veterinary expenses have increased substantially.

## **Forestry and fishery**

Tables 9.29 to 9.33 present information on fishing. Aquaculture is becoming increasingly important accounting for 35 % of the value of fishery production in 2002.

Table 9.34 presents information on Coillte activities. The volume of timber sold increased by almost 6% between 1999 and 2004. The area of land planted by Coillte increased by 4% between 2003 and 2004.

### **Yield**

The yield figures are given on a green (as harvested) basis.

### **Annual Work Unit**

This is defined as 1,800 hours or more per annum. Holidays and sick leave are excluded.

### **Number of farms**

A new methodology was introduced as part of the Census of Agriculture in 1991. The new results were generally consistent for crop areas and numbers of livestock. However, the more rigorous nature of the 1991 Census resulted in fewer farms than under the old methodology.

### **Agricultural land sales**

Transactions in Dublin, those under 2 hectares and those outside the range €500-€35,000 per hectare have been excluded.

### **Tables 9.3 and 9.6**

The number of sheep shown for the year 2000 differs from the total shown in the Census of Agriculture June 2000 publication. As explained in that publication, the Census figure for lambs was considerably less than a matched sample estimate. The difference was due to delayed response by some farmers to the Census. The CSO considers the matched sample estimate to be the best estimate of numbers in that category on 1 June 2000 and the data in the Yearbook incorporate that figure.

### **Table 9.9**

The Labour section of the June 2003 Agriculture Survey Questionnaire included an additional question in which the farm holder was required to indicate whether or not they had been engaged in farming in the past 12 months. Up to then it had been assumed that the holder of the farm had engaged in some farming activity during the reference period.

### **Table 9.11**

The operating surplus figure is comprised of the operating surplus earned by farmers and that earned by agricultural contractors. The part earned by farmers is an approximation for the income indicator used under the old agriculture accounts methodology. It is calculated before deductions for interest payments on borrowed capital and before deductions for land annuities and for rent paid by farmers to landowners for the use of their land.

### **Table 9.12**

The output of cattle, sheep and pigs includes estimates for cross-border trade in live animals.

**Table 9.1 Area under selected crops**

*Hectares (thousands)*

Year	Wheat	Oats	Barley	Potatoes	Crops, fruit and horticulture
1847	272	625	120	89	1,266
1857	192	565	81	359	1,373
1867	88	475	69	308	1,121
1877	42	403	90	262	970
1887	18	362	65	238	841
1897	13	313	68	199	745
1907	12	290	67	172	687
1917	43	420	71	210	907
1927	14	261	49	148	612
1937	89	232	53	132	644
1947	235	334	59	155	937
1957	164	186	124	108	711
1967	76	96	183	65	527
1977	48	35	298	53	508
1987	56	23	255	29	438
1997	94	21	190	18	414
1999	68	20	192	18	401
2000	78	17	182	14	401
2001	85	17	182	14	415
2002	103	19	176	15	423
2003	96	21	183	14	436
2004	103	20	184	13	424

Source: CSO

**Table 9.2 Number of holdings**

*Number*

Year	Total	Leinster	Munster	Connaught	Ulster (part)
1855	419,500	117,800	115,500	115,600	70,600
1865	419,400	114,000	114,600	120,700	70,000
1875	410,000	109,600	113,000	119,700	67,700
1885	396,900	105,100	110,000	116,000	65,700
1895	397,800	104,800	111,200	116,100	65,700
1905	399,900	104,000	113,400	116,700	65,800
1915	359,700	87,900	101,800	109,000	60,900
1930	338,000	83,600	98,200	103,000	53,100
1940	326,700	81,100	95,600	99,400	50,600
1950	317,900	78,500	93,700	97,100	48,600
1960	290,300	71,800	88,200	87,300	42,900
1970	279,500	70,400	86,700	81,800	40,500
1980	263,600	66,600	83,100	76,200	37,600
1991	170,100	42,700	56,300	48,900	22,100
1997	147,800	38,000	50,000	41,200	18,600
2000	141,500	35,600	46,200	40,900	18,900
2001	139,600	35,100	45,600	40,400	18,600
2002	136,500	34,300	44,600	39,500	18,200
2003	135,300	33,900	43,800	39,500	18,100

Source: CSO

Table 9.3 Number of selected livestock

Thousands

Year	Cattle	Sheep	Pigs	Poultry	Horses and ponies
1847	2,005	2,046	542	4,630	445
1857	2,902	3,240	1,029	7,677	466
1867	2,996	4,546	1,050	8,302	399
1877	3,238	3,739	1,221	10,852	417
1887	3,412	3,117	1,146	11,146	431
1897	3,662	3,796	1,064	13,431	471
1907	3,889	3,425	1,085	18,200	464
1917	4,132	3,327	844	17,047	470
1927	4,047	3,120	1,178	21,584	429
1937	3,955	3,000	934	19,491	429
1947	3,950	2,094	457	17,304	438
1957	4,417	3,720	900	14,502	258
1967	5,586	4,239	985	10,593	143
1977	7,124	3,534	939	9,336	80
1987	6,545	5,595	999	9,823	59
1997	7,533	8,132	1,700	13,433	72
1999	7,387	7,925	1,787	12,697	76
2000	7,037	7,555	1,722	13,961	70
2001	7,050	7,330	1,741	12,603	71
2002	6,992	7,210	1,769	12,709	73
2003	6,999	6,849	1,713	12,738	70
2004	7,016	6,777	1,645	n/a	73

Source: CSO

Number of cattle, sheep and pigs

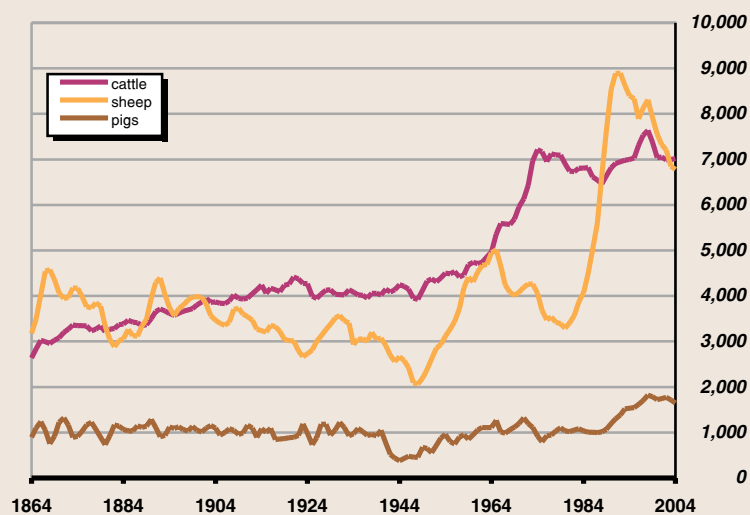




Table 9.4 Area, yield and production of crops

Crop		Unit	1998	1999	2000	2001	2002	2003	2004
<b>Total wheat</b>	Area	Hectares (000)	83.8	68.1	78.0	84.9	102.7	95.7	102.7
	Yield	Tonnes per hectare	8.0	8.8	9.5	9.1	8.4	8.3	9.9
	Production	Tonnes (000)	673.0	597.4	737.4	769.2	867.2	794.1	1,019.2
<i>Winter</i>	<i>Area</i>	<i>Hectares (000)</i>	<i>65.5</i>	<i>40.6</i>	<i>58.8</i>	<i>49.9</i>	<i>80.0</i>	<i>60.6</i>	<i>71.5</i>
	<i>Yield</i>	<i>Tonnes per hectare</i>	<i>8.1</i>	<i>9.4</i>	<i>9.9</i>	<i>9.8</i>	<i>8.8</i>	<i>8.7</i>	<i>10.5</i>
	<i>Production</i>	<i>Tonnes (000)</i>	<i>531.9</i>	<i>382.1</i>	<i>582.3</i>	<i>489.2</i>	<i>703.6</i>	<i>526.9</i>	<i>750.6</i>
<i>Spring</i>	<i>Area</i>	<i>Hectares (000)</i>	<i>18.4</i>	<i>27.4</i>	<i>19.1</i>	<i>35.0</i>	<i>22.7</i>	<i>35.2</i>	<i>31.2</i>
	<i>Yield</i>	<i>Tonnes per hectare</i>	<i>7.7</i>	<i>7.8</i>	<i>8.1</i>	<i>8.0</i>	<i>7.2</i>	<i>7.6</i>	<i>8.6</i>
	<i>Production</i>	<i>Tonnes (000)</i>	<i>141.1</i>	<i>215.3</i>	<i>155.1</i>	<i>280.0</i>	<i>163.6</i>	<i>267.2</i>	<i>268.6</i>
<b>Total oats</b>	Area	Hectares (000)	19.4	20.2	16.8	16.8	18.8	21.0	20.0
	Yield	Tonnes per hectare	6.1	6.7	7.5	7.1	7.1	7.4	7.8
	Production	Tonnes (000)	119.1	136.4	126.6	118.7	133.6	155.1	155.2
<i>Winter</i>	<i>Area</i>	<i>Hectares (000)</i>	<i>12.1</i>	<i>7.7</i>	<i>9.6</i>	<i>5.7</i>	<i>11.8</i>	<i>9.4</i>	<i>12.9</i>
	<i>Yield</i>	<i>Tonnes per hectare</i>	<i>6.6</i>	<i>7.8</i>	<i>8.3</i>	<i>8.0</i>	<i>7.8</i>	<i>8.1</i>	<i>8.3</i>
	<i>Production</i>	<i>Tonnes (000)</i>	<i>80.2</i>	<i>60.2</i>	<i>79.8</i>	<i>45.2</i>	<i>92.1</i>	<i>75.9</i>	<i>107.3</i>
<i>Spring</i>	<i>Area</i>	<i>Hectares (000)</i>	<i>7.3</i>	<i>12.5</i>	<i>7.2</i>	<i>11.1</i>	<i>7.0</i>	<i>11.6</i>	<i>7.0</i>
	<i>Yield</i>	<i>Tonnes per hectare</i>	<i>5.3</i>	<i>6.1</i>	<i>6.5</i>	<i>6.6</i>	<i>5.9</i>	<i>6.8</i>	<i>6.8</i>
	<i>Production</i>	<i>Tonnes (000)</i>	<i>38.9</i>	<i>76.2</i>	<i>46.8</i>	<i>73.4</i>	<i>41.5</i>	<i>79.2</i>	<i>47.9</i>
<b>Total barley</b>	Area	Hectares (000)	190.7	192.0	182.3	182.0	176.0	183.1	183.7
	Yield	Tonnes per hectare	5.6	6.7	7.2	7.0	5.5	6.5	7.3
	Production	Tonnes (000)	1,073.0	1,277.5	1,309.9	1,277.2	962.8	1,197.7	1,326.6
<i>Winter</i>	<i>Area</i>	<i>Hectares (000)</i>	<i>39.0</i>	<i>26.2</i>	<i>24.1</i>	<i>19.6</i>	<i>23.2</i>	<i>19.8</i>	<i>20.5</i>
	<i>Yield</i>	<i>Tonnes per hectare</i>	<i>6.4</i>	<i>7.6</i>	<i>8.4</i>	<i>8.0</i>	<i>6.6</i>	<i>7.7</i>	<i>8.2</i>
	<i>Production</i>	<i>Tonnes (000)</i>	<i>249.9</i>	<i>200.5</i>	<i>202.6</i>	<i>156.7</i>	<i>152.8</i>	<i>152.8</i>	<i>168.2</i>
<i>Spring</i>	<i>Area</i>	<i>Hectares (000)</i>	<i>151.7</i>	<i>165.8</i>	<i>158.2</i>	<i>162.4</i>	<i>152.8</i>	<i>163.3</i>	<i>163.2</i>
	<i>Yield</i>	<i>Tonnes per hectare</i>	<i>5.4</i>	<i>6.5</i>	<i>7.0</i>	<i>6.9</i>	<i>5.3</i>	<i>6.4</i>	<i>7.1</i>
	<i>Production</i>	<i>Tonnes (000)</i>	<i>823.1</i>	<i>1,077.0</i>	<i>1,107.3</i>	<i>1,120.5</i>	<i>810.0</i>	<i>1,044.9</i>	<i>1,158.5</i>
<b>Beans and peas</b>	Area	Hectares (000)	6.5	4.1	1.5	1.9	1.7	2.8	2.7
	Yield	Tonnes per hectare	5.0	4.5	5.1	4.7	4.5	4.8	5.4
	Production	Tonnes (000)	32.4	18.4	7.7	8.9	7.5	13.7	14.4
<b>Oilseed rape</b>	Area	Hectares (000)	5.6	2.6	2.7	2.4	2.2	2.3	2.2
	Yield	Tonnes per hectare	2.9	1.9	3.2	3.0	3.1	3.1	3.0
	Production	Tonnes (000)	16.6	5.1	8.6	7.3	6.7	7.2	6.4
<b>Potatoes</b>	Area	Hectares (000)	18.5	17.5	13.5	14.3	15.4	14.2	13.3
	Yield	Tonnes per hectare	26.1	32.0	33.6	33.5	33.7	34.5	41.4
	Production	Tonnes (000)	482.1	558.6	454.8	477.6	518.6	488.2	552.2
<b>Sugar beet</b>	Area	Hectares (000)	32.9	33.8	32.2	31.1	31.3	31.5	31.1
	Yield	Tonnes per hectare	49.8	50.7	56.8	48.2	41.6	47.7	59.8
	Production	Tonnes (000)	1,640.0	1,712.1	1,829.0	1,498.0	1,313.4	1,505.2	1,861.4
<b>Turnips</b>	Area	Hectares (000)	4.6	4.2	2.1	1.8	1.6	1.2	1.2
	Yield	Tonnes per hectare	45.3	42.0	60.0	54.4	54.4	n/a	n/a
	Production	Tonnes (000)	208.1	176.6	124.0	99.9	89.7	n/a	n/a
<b>Fodder beet</b>	Area	Hectares (000)	7.3	7.0	5.1	4.3	4.1	3.6	4.1
	Yield	Tonnes per hectare	64.8	70.4	70.3	65.5	60.9	n/a	n/a
	Production	Tonnes (000)	475.2	494.7	361.3	278.7	249.5	n/a	n/a

Source: CSO and Teagasc

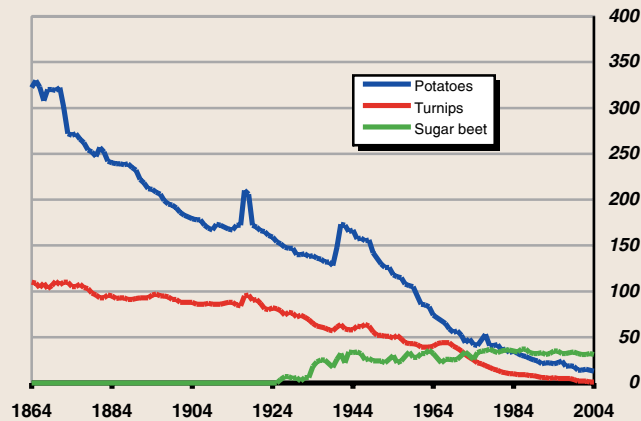
Table 9.5 Area under crops and pasture in June

Hectares (thousands)

Crop	1998	1999	2000	2001	2002	2003	2004
<b>Total wheat</b>	<b>83.8</b>	<b>68.1</b>	<b>78.0</b>	<b>84.9</b>	<b>102.7</b>	<b>95.7</b>	<b>102.7</b>
Winter	65.5	40.6	58.8	49.9	80.0	60.6	71.5
Spring	18.4	27.4	19.1	35.0	22.7	35.2	31.2
<b>Total oats</b>	<b>19.4</b>	<b>20.2</b>	<b>16.8</b>	<b>16.8</b>	<b>18.8</b>	<b>21.0</b>	<b>20.0</b>
Winter	12.1	7.7	9.6	5.7	11.8	9.4	12.9
Spring	7.3	12.5	7.2	11.1	7.0	11.6	7.0
<b>Total barley</b>	<b>190.7</b>	<b>192.0</b>	<b>182.3</b>	<b>182.0</b>	<b>176.0</b>	<b>183.1</b>	<b>183.7</b>
Winter	39.0	26.2	24.1	19.6	23.2	19.8	20.5
Spring	151.7	165.8	158.2	162.4	152.8	163.3	163.2
Other cereals	6.6	9.5	2.0	2.2	1.8	3.1	3.8
<b>Total cereals</b>	<b>300.6</b>	<b>289.9</b>	<b>279.0</b>	<b>285.9</b>	<b>299.3</b>	<b>302.9</b>	<b>310.2</b>
Beans and peas	6.5	4.1	1.5	1.9	1.7	2.8	2.7
Oilseed rape	5.6	2.6	2.7	2.4	2.2	2.3	2.2
Arable silage <sup>1</sup>	n/a	n/a	24.4	24.4	20.8	29.4	21.2
Maize silage <sup>1</sup>	n/a	n/a	14.0	19.7	19.3	15.6	13.5
Potatoes	18.5	17.5	13.5	14.3	15.4	14.2	13.3
Turnips	4.6	4.2	2.1	1.8	1.6	1.2	1.2
Sugar beet	32.9	33.8	32.2	31.1	31.3	31.5	31.1
Fodder beet	7.3	7.0	5.1	4.3	4.1	3.6	4.1
Kale and field cabbage	1.1	1.1	1.0	1.0	0.9	0.8	1.1
Vegetables for sale	5.1	4.5	4.1	4.3	4.0	4.1	3.7
Fruit	1.6	1.4	1.2	1.2	0.9	1.3	1.2
Nursery stock, bulbs and flowers	1.2	1.5	0.9	0.9	0.9	1.0	1.3
Other crops <sup>1</sup>	23.0	33.4	19.4	22.4	21.0	25.6	17.2
<b>Total crops, fruit and horticulture</b>	<b>408.1</b>	<b>401.0</b>	<b>401.1</b>	<b>415.4</b>	<b>423.3</b>	<b>436.4</b>	<b>423.9</b>
Silage	950.4	977.4	1,074.7	1,065.9	1,015.1	999.3	1,020.4
Hay	282.7	250.4	242.6	251.5	199.4	184.0	189.0
Pasture	2,327.3	2,325.1	2,218.1	2,214.0	2,262.4	2,282.5	2,218.1
<b>Crops and pasture</b>	<b>3,968.4</b>	<b>3,953.9</b>	<b>3,936.5</b>	<b>3,946.8</b>	<b>3,900.2</b>	<b>3,902.2</b>	<b>3,851.4</b>
Rough grazing in use	446.4	464.5	506.5	463.1	471.7	468.1	453.5
<b>Area farmed</b>	<b>4,414.8</b>	<b>4,418.4</b>	<b>4,443.2</b>	<b>4,409.9</b>	<b>4,372.0</b>	<b>4,370.2</b>	<b>4,305.0</b>

<sup>1</sup> Arable and maize silage were first identified as separate categories in 2000  
Source: CSO

Area under principal root crops



**Table 9.6 Number of livestock in June**

Thousands

Livestock	1998	1999	2000	2001	2002	2003	2004
<b>Breeding cattle</b>							
Bulls	53.0	54.6	56.1	58.8	62.8	64.1	66.5
Cows	2,481.7	2,417.9	2,364.4	2,379.3	2,318.3	2,342.9	2,363.2
Dairy	1,233.8	1,200.6	1,177.5	1,182.5	1,164.1	1,155.6	1,156.1
Other	1,247.9	1,217.3	1,187.0	1,196.8	1,154.2	1,187.3	1,207.1
Heifers in calf	355.5	330.1	331.6	331.1	373.9	352.8	369.2
Dairy	228.8	213.6	206.5	198.3	230.7	215.8	229.6
Other	126.7	116.5	125.1	132.8	143.2	137.0	139.6
<b>Other cattle</b>							
Two years old and upwards	1,002.1	1,057.7	1,016.2	941.1	844.7	901.5	910.6
Male	708.1	736.7	721.6	642.1	560.4	598.7	605.4
Female	294.0	321.0	294.7	299.0	284.3	302.8	305.2
One year old and under two years	1,782.6	1,706.0	1,517.1	1,515.0	1,593.2	1,577.2	1,534.8
Male	1,085.6	1,039.0	912.4	913.3	991.8	983.3	949.8
Female	697.0	667.1	604.7	601.7	601.4	593.9	585.0
Under one year	1,965.0	1,820.7	1,751.9	1,824.4	1,799.3	1,760.3	1,771.4
Male	1,054.8	965.1	919.4	955.2	953.1	921.2	929.8
Female	910.3	855.5	832.5	869.2	846.2	839.1	841.6
<b>Total cattle</b>	<b>7,640.0</b>	<b>7,387.0</b>	<b>7,037.4</b>	<b>7,049.8</b>	<b>6,992.2</b>	<b>6,998.6</b>	<b>7,015.6</b>
<b>Sheep</b>							
Rams	114.1	111.7	109.5	104.9	105.3	102.5	99.6
Total ewes	4,463.3	4,287.2	4,106.9	3,914.6	3,804.1	3,615.4	3,570.4
Two years and over	3,536.4	3,475.8	3,398.3	3,261.3	3,150.0	3,026.8	2,985.6
Under two years	926.9	811.4	708.6	653.3	654.1	588.6	584.8
Other sheep	3,734.6	3,526.6	3,338.7	3,310.9	3,300.1	3,131.0	3,107.3
<b>Total sheep</b>	<b>8,312.0</b>	<b>7,925.5</b>	<b>7,555.0</b>	<b>7,330.3</b>	<b>7,209.6</b>	<b>6,848.9</b>	<b>6,777.2</b>
<b>Pigs</b>							
Boars	4.9	4.3	4.0	3.4	3.5	3.1	2.9
Female breeding pigs	194.9	188.4	176.9	183.4	181.6	172.6	167.4
Other pigs classified by liveweight	1,618.7	1,594.2	1,541.3	1,554.3	1,584.4	1,537.7	1,475.2
20 kg and over	1,149.5	1,101.4	1,014.8	999.8	1,028.4	1,008.4	968.3
under 20 kg	469.2	492.8	526.5	554.5	556.0	529.3	506.9
<b>Total pigs</b>	<b>1,818.6</b>	<b>1,786.9</b>	<b>1,722.1</b>	<b>1,741.1</b>	<b>1,769.5</b>	<b>1,713.4</b>	<b>1,645.5</b>
<b>Poultry</b>							
Ordinary fowl	11,586.6	11,419.7	12,724.9	11,450.3	11,599.1	11,365.2	n/a
Other fowl	1,560.2	1,277.7	1,235.9	1,152.3	1,109.5	1,372.6	n/a
<b>Total poultry</b>	<b>13,146.9</b>	<b>12,697.4</b>	<b>13,960.8</b>	<b>12,602.6</b>	<b>12,708.6</b>	<b>12,737.8</b>	<b>n/a</b>
Horses and ponies	72.8	75.5	69.9	71.0	72.6	70.4	72.8
Mules, jennets and asses	7.5	7.3	5.0	4.9	4.7	5.8	5.7
Goats	15.1	13.5	8.1	7.8	7.7	7.6	7.5
Farmed deer	16.7	16.1	12.1	12.1	11.6	11.2	10.6

Source: CSO

TABLE 9.6

**Table 9.7 Number of livestock in December**

Thousands

Livestock	1998	1999	2000	2001	2002	2003	2004
<b>Breeding cattle</b>							
Bulls	46.8	47.5	49.8	53.0	55.3	56.6	58.7
Cows	2,395.0	2,340.6	2,308.0	2,307.7	2,279.5	2,279.9	2,272.6
Dairy	1,198.8	1,173.8	1,152.8	1,148.0	1,128.7	1,135.7	1,121.8
Other	1,196.2	1,166.8	1,155.2	1,159.7	1,150.8	1,144.2	1,150.8
Heifers in calf	352.7	335.7	343.3	353.7	357.4	366.5	381.6
Dairy	223.8	210.4	202.9	206.2	215.8	225.6	238.0
Other	128.8	125.2	140.4	147.5	141.6	140.9	143.6
<b>Other cattle</b>							
Two years old and upwards	818.9	738.7	669.8	485.3	471.2	449.5	499.2
Male	546.4	491.1	452.3	288.0	278.6	258.2	283.2
Female	272.5	247.6	217.5	197.3	192.6	191.3	216.0
One year old and under two years	1,548.8	1,446.4	1,269.3	1,329.0	1,363.8	1,319.9	1,253.4
Male	976.1	904.8	798.1	841.4	885.6	856.2	782.0
Female	572.8	541.6	471.2	487.6	478.2	463.7	471.4
Under one year	1,789.5	1,648.9	1,689.9	1,879.4	1,805.7	1,751.1	1,746.0
Male	983.1	892.2	927.1	1,007.4	1,001.1	948.6	924.2
Female	806.5	756.7	762.8	872.0	804.6	802.5	821.8
<b>Total cattle</b>	<b>6,951.7</b>	<b>6,557.9</b>	<b>6,330.2</b>	<b>6,408.1</b>	<b>6,332.8</b>	<b>6,223.4</b>	<b>6,211.5</b>
<b>Sheep</b>							
Ewes for breeding	4,269.3	4,101.8	3,933.8	3,812.0	3,730.9	3,677.0	3,469.1
Rams for breeding	117.4	114.8	111.8	108.2	104.0	102.2	100.4
Other sheep	1,172.4	1,101.9	1,010.5	886.8	993.6	1,070.9	987.3
<b>Total sheep</b>	<b>5,559.1</b>	<b>5,318.6</b>	<b>5,056.0</b>	<b>4,807.0</b>	<b>4,828.5</b>	<b>4,850.1</b>	<b>4,556.7</b>
<b>Pigs</b>							
Pigs for breeding							
Gilts in pig	25.7	24.2	22.9	24.3	20.9	21.2	23.2
Sows in pig	107.1	107.7	109.8	107.8	110.4	103.6	102.5
Other sows for breeding	37.4	38.9	33.9	37.3	33.8	33.4	32.2
Gilts not yet served	17.6	15.6	18.1	17.9	18.1	17.3	20.8
Boars	4.6	4.1	4.0	3.7	3.1	2.9	2.6
Other pigs (classified by liveweight)							
80 kg and over	169.6	158.8	155.4	169.4	178.4	188.1	153.7
50 kg and under 80 kg	433.7	407.7	395.6	400.6	392.6	383.9	400.9
20 kg and under 50 kg	535.9	520.3	510.0	497.5	499.2	478.1	514.2
Less than 20 kg	469.3	485.7	481.8	504.6	525.0	503.2	507.5
<b>Total pigs</b>	<b>1,800.9</b>	<b>1,762.9</b>	<b>1,731.5</b>	<b>1,762.9</b>	<b>1,781.5</b>	<b>1,731.6</b>	<b>1,757.6</b>
<b>Poultry</b>							
Ordinary fowl	10,991.1	11,636.2	11,752.8	11,266.7	11,341.5	n/a	n/a
Other fowl	1,889.0	2,001.5	1,833.9	1,944.3	1,867.0	n/a	n/a
<b>Total poultry</b>	<b>12,880.0</b>	<b>13,637.7</b>	<b>13,586.7</b>	<b>13,211.0</b>	<b>13,208.4</b>	<b>n/a</b>	<b>n/a</b>

Source: CSO

**Table 9.8 Agricultural land sales**

	Unit	1999	2000	2001	2002	2003	2004
Average transaction size	ha	14.2	11.1	11.0	10.5	9.5	9.2
Average price per hectare	€	11,264	12,665	13,870	13,486	14,385	16,261
Average price per acre	€	4,558	5,125	5,613	5,457	5,821	6,580

Source: CSO

**Table 9.9 Agricultural labour input (persons)**

	Thousands				
Sex and category of worker	1997	1998	1999	2000	2003 <sup>1</sup>
<b>Total</b>	<b>281.9</b>	<b>275.1</b>	<b>270.0</b>	<b>257.9</b>	<b>245.5</b>
Males	201.0	197.1	193.6	187.7	181.1
Females	80.9	78.0	76.4	70.3	64.4
<b>Family workers</b>	<b>268.0</b>	<b>261.6</b>	<b>257.0</b>	<b>243.6</b>	<b>231.0</b>
Holder	147.6	146.2	143.7	141.3	131.7 <sup>2</sup>
Spouse	54.4	50.6	49.9	45.1	43.1
Other family workers	66.0	64.9	63.4	57.2	56.2
Regular non-family workers	13.9	13.5	12.9	14.4	14.5

<sup>1</sup> Provisional

<sup>2</sup> Figure not comparable with earlier years. See Technical Notes.

Source: CSO

**Table 9.10 Agricultural labour input (annual work units)**

	Thousands				
Sex and category of worker	1997	1998	1999	2000	2003 <sup>1</sup>
<b>Total labour input</b>	<b>205.8</b>	<b>200.2</b>	<b>191.7</b>	<b>171.7</b>	<b>163.2</b>
<b>Family and regular non-family workers</b>	<b>197.2</b>	<b>191.4</b>	<b>183.6</b>	<b>163.9</b>	<b>155.9</b>
Males	149.8	146.3	140.3	127.3	120.2
Females	47.4	45.2	43.3	36.6	35.7
<b>Family workers</b>	<b>188.3</b>	<b>183.0</b>	<b>176.1</b>	<b>155.9</b>	<b>147.4</b>
Holder	122.1	120.4	116.7	105.8	101.4
Spouse	33.9	31.1	29.8	25.2	22.8
Other family workers	32.3	31.6	29.5	25.0	23.2
Regular non-family workers	8.9	8.4	7.5	8.0	8.5
Non-regular labour input					
Casual, contract and relief workers	8.6	8.7	8.1	7.8	7.3
<b>Average labour input per farm</b>	<b>1.39</b>	<b>1.37</b>	<b>1.33</b>	<b>1.21</b>	<b>1.21</b>

<sup>1</sup> Provisional

Source: CSO

TABLE 9.8

TABLE 9.9

TABLE 9.10

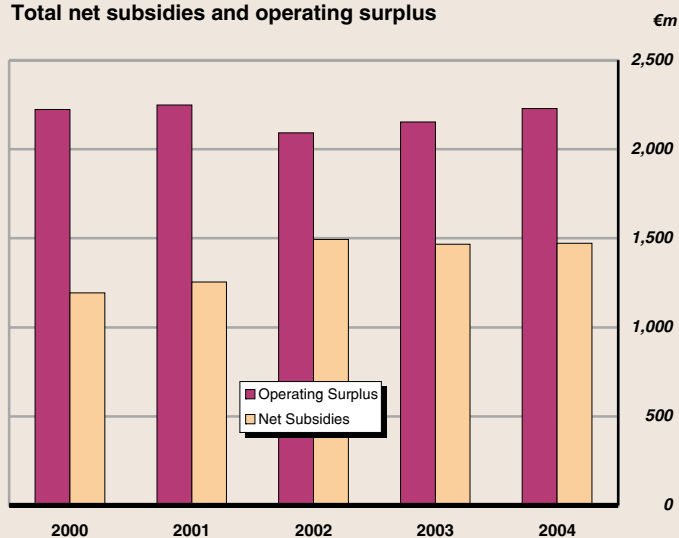
**Table 9.11 Output, input and income in agriculture**

€m

Commodity	Estimated value at current prices				
	2000	2001	2002	2003	2004
<b>Livestock</b>	<b>2,170.6</b>	<b>2,174.4</b>	<b>2,017.4</b>	<b>2,070.2</b>	<b>2,217.8</b>
(including stock changes)					
Cattle	1,382.1	1,260.3	1,179.0	1,244.0	1,344.6
Pigs	296.7	345.8	300.7	283.1	301.0
Sheep	203.4	284.3	202.1	193.2	203.2
Horses	164.3	146.5	200.7	212.7	219.9
Poultry	124.0	137.4	134.9	137.2	149.1
<b>Livestock Products</b>	<b>1,484.4</b>	<b>1,602.8</b>	<b>1,449.4</b>	<b>1,469.6</b>	<b>1,457.0</b>
Milk	1,447.1	1,566.2	1,413.0	1,431.8	1,417.0
Other products	37.2	36.6	36.5	37.8	40.0
<b>Crops</b>	<b>1,228.7</b>	<b>1,320.1</b>	<b>1,244.3</b>	<b>1,306.7</b>	<b>1,352.8</b>
(including stock changes)					
Barley	114.2	105.3	73.1	102.2	98.6
Wheat	63.0	57.8	61.2	59.5	72.4
Oats	7.9	6.7	7.6	10.0	10.5
Potatoes	58.7	98.1	96.5	98.7	91.2
Sugar beet	74.9	75.1	72.1	75.6	75.6
Mushrooms	114.8	115.6	137.7	124.5	108.2
Other fresh vegetables	74.1	82.8	73.5	78.6	84.1
Fresh fruit	7.1	17.0	22.9	30.4	28.9
Turf	22.5	26.5	27.8	34.2	33.5
Other crops	46.2	48.6	50.6	52.9	63.8
Forage plants	645.2	686.7	621.3	640.0	685.8
<b>Goods output at producer prices</b>	<b>4,883.6</b>	<b>5,097.2</b>	<b>4,711.2</b>	<b>4,846.5</b>	<b>5,027.6</b>
Contract work	258.1	279.2	248.3	247.9	263.2
Subsidies on products	876.7	710.8	904.1	925.0	917.6
Taxes on products	32.9	25.0	27.4	35.9	39.1
<b>Agricultural output at basic prices</b>	<b>5,985.5</b>	<b>6,062.2</b>	<b>5,836.2</b>	<b>5,983.5</b>	<b>6,169.2</b>

TABLE 9.11

**Total net subsidies and operating surplus**



**Table 9.11 Output, input and income in agriculture (continued)**

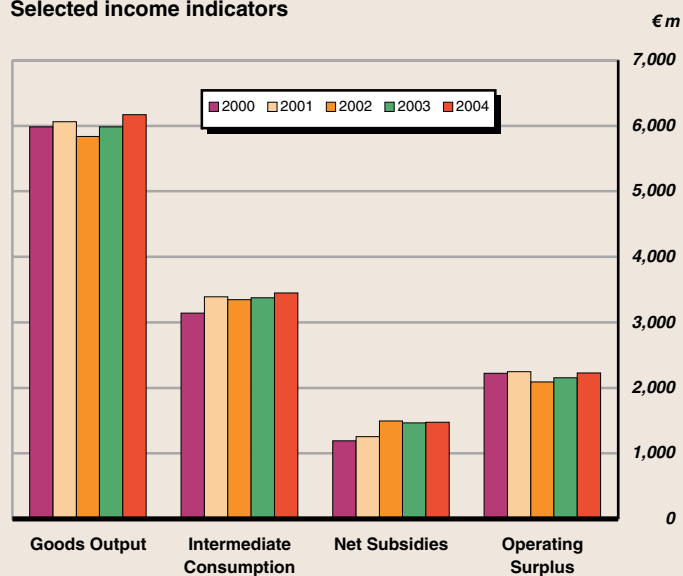
€m

Commodity	Estimated value at current prices				
	2000	2001	2002	2003	2004
<b>Agricultural output at basic prices</b>	<b>5,985.5</b>	<b>6,062.2</b>	<b>5,836.2</b>	<b>5,983.5</b>	<b>6,169.2</b>
<b>Intermediate consumption</b>	<b>3,138.8</b>	<b>3,391.0</b>	<b>3,344.4</b>	<b>3,376.8</b>	<b>3,450.6</b>
Feedingstuffs	829.9	882.0	955.9	923.0	903.9
Fertilisers	338.7	350.7	341.4	371.2	358.0
Seeds	59.6	68.2	74.4	70.1	84.2
Energy and lubricants	217.7	242.8	221.5	226.6	245.0
Maintenance and repairs	290.5	333.0	306.8	323.7	330.8
Services	234.9	274.4	290.1	294.1	290.1
Crop protection products	67.4	60.5	73.0	65.1	64.6
Veterinary pharmaceutical products	100.2	106.9	109.9	112.0	117.4
Other goods (detergents, small tools etc)	108.1	118.6	111.6	112.3	117.0
Forage plants	633.8	674.7	611.3	630.8	676.5
Contract work	258.1	279.2	248.3	247.9	263.2
<b>Gross value added at basic prices</b>	<b>2,846.8</b>	<b>2,671.2</b>	<b>2,491.7</b>	<b>2,606.7</b>	<b>2,718.6</b>
<b>Fixed capital consumption</b>	<b>590.1</b>	<b>619.0</b>	<b>637.9</b>	<b>642.8</b>	<b>655.7</b>
Machinery, equipment etc	422.7	431.2	440.2	443.6	447.0
Farm buildings	167.3	187.8	197.7	199.2	208.6
<b>Net value added at basic prices</b>	<b>2,256.7</b>	<b>2,052.2</b>	<b>1,853.9</b>	<b>1,963.9</b>	<b>2,063.0</b>
Other subsidies less taxes on production	349.1	568.6	616.0	578.2	594.3
<b>Factor income</b>	<b>2,605.8</b>	<b>2,620.8</b>	<b>2,469.8</b>	<b>2,542.1</b>	<b>2,657.3</b>
Compensation of employees	381.9	371.5	378.2	389.2	428.3
<b>Operating surplus</b>	<b>2,223.9</b>	<b>2,249.3</b>	<b>2,091.7</b>	<b>2,152.9</b>	<b>2,229.0</b>

Source: CSO

TABLE 9.11

**Selected income indicators**



**Table 9.12 Agricultural output**

Commodity	Unit	Estimated quantity				
		2000	2001	2002	2003	2004
<b>Livestock</b>						
(including stock changes)						
Cattle	number (000)	2,061	2,072	1,830	1,956	1,908
Pigs	number (000)	3,280	3,351	3,380	3,207	3,203
Sheep	number (000)	3,614	3,457	3,089	2,944	3,022
Poultry	number (000)	59,462	60,845	60,427	63,650	64,725
<b>Livestock products</b>						
Milk	million litres	5,048	5,214	5,067	5,192	5,150
Eggs	million	568	550	583	559	559
<b>Crops</b>						
(including stock changes)						
Barley	tonnes (000)	1,077	982	740	899	991
Wheat	tonnes (000)	608	493	630	495	688
Oats	tonnes (000)	81	69	78	94	105
Potatoes	tonnes (000)	355	376	371	383	488
Sugar beet	tonnes (000)	1,418	1,372	1,296	1,355	1,359
Mushrooms	tonnes (000)	60	68	69	69	65
Turf	tonnes (000)	460	501	416	457	447

Source: CSO



**Table 9.13 Selected volume indices***Base year 2000=100*

Commodity	2000	2001	2002	2003	2004
<b>Goods output at producer prices</b>	<b>100.0</b>	<b>101.7</b>	<b>96.6</b>	<b>99.7</b>	<b>100.5</b>
<b>Livestock</b>	<b>100.0</b>	<b>100.9</b>	<b>95.2</b>	<b>99.3</b>	<b>99.7</b>
Cattle	100.0	99.4	92.1	97.7	96.7
Pigs	100.0	102.2	101.6	100.4	99.1
Sheep	100.0	96.3	82.1	79.1	82.5
Horses	100.0	111.0	119.2	132.0	142.0
Poultry	100.0	107.5	103.5	105.2	107.9
<b>Livestock products</b>	<b>100.0</b>	<b>102.1</b>	<b>99.6</b>	<b>101.8</b>	<b>100.5</b>
Milk	100.0	102.3	99.6	101.9	100.6
<b>Crops</b>	<b>100.0</b>	<b>102.5</b>	<b>95.4</b>	<b>97.7</b>	<b>101.7</b>
Barley	100.0	90.8	69.1	83.3	91.1
Wheat	100.0	81.1	103.7	79.7	113.5
Potatoes	100.0	118.3	112.7	116.4	149.3
Sugar beet	100.0	96.8	91.0	96.4	95.9
Fresh vegetables	100.0	107.9	104.6	106.5	101.5
<b>Intermediate consumption</b>	<b>100.0</b>	<b>102.6</b>	<b>98.7</b>	<b>97.3</b>	<b>96.5</b>
Feeding stuffs	100.0	101.4	107.9	104.0	98.1
Fertilisers	100.0	88.9	87.6	94.1	88.7
Seeds	100.0	127.8	133.4	107.5	141.3
Energy and lubricants	100.0	113.6	103.2	99.7	99.0
Maintenance and repairs	100.0	106.3	94.3	96.4	95.8
Services	100.0	106.6	102.6	101.0	103.3
Crop protection products	100.0	89.1	106.7	95.2	92.9
Veterinary pharmaceutical products	100.0	104.5	104.1	102.4	104.8
<b>Gross value added at basic prices</b>	<b>100.0</b>	<b>94.3</b>	<b>89.4</b>	<b>95.9</b>	<b>107.1</b>

*Source: CSO*

TABLE 9.13

**Table 9.14 Output of cattle and calves (number)**

Thousands

	2000	2001	2002	2003	2004
Live exports	405	102	125	203	114
Export slaughterings	1,752	1,779	1,675	1,766	1,723
Other slaughterings	134	114	107	98	90
<b>Total disposals</b>	<b>2,290</b>	<b>1,995</b>	<b>1,907</b>	<b>2,067</b>	<b>1,926</b>
Imports	1	1	2	1	1
Change in stocks	-228	78	-75	-109	-17
<b>Output of cattle and calves</b>	<b>2,061</b>	<b>2,072</b>	<b>1,830</b>	<b>1,956</b>	<b>1,908</b>

Source: CSO

**Table 9.15 Output of cattle and calves (value)**

€m

	2000	2001	2002	2003	2004
Live exports	195	56	68	97	57
Export slaughterings	1,250	1,154	1,092	1,146	1,248
Other slaughterings	70	57	54	50	50
<b>Total disposals</b>	<b>1,515</b>	<b>1,267</b>	<b>1,214</b>	<b>1,293</b>	<b>1,355</b>
Imports	2	1	3	1	1
Change in stocks	-131	-5	-33	-48	-10
<b>Output of cattle and calves</b>	<b>1,382</b>	<b>1,260</b>	<b>1,179</b>	<b>1,244</b>	<b>1,345</b>

Source: CSO

**Cattle, sheep and pig output at current producer prices**

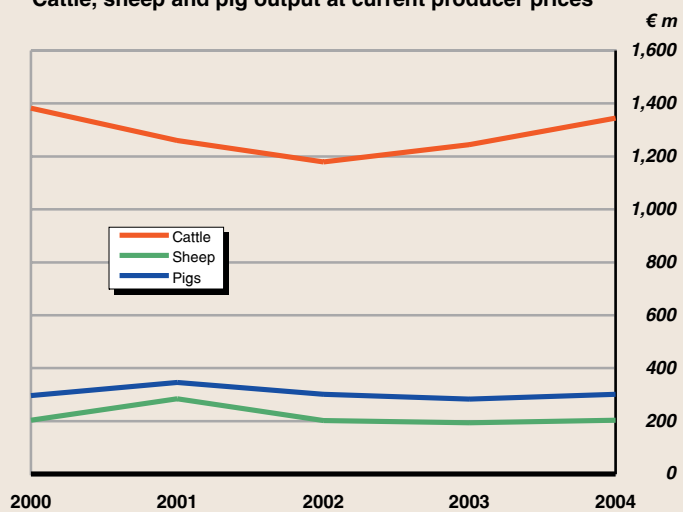


TABLE 9.14

TABLE 9.15

**Table 9.16 Output of pigs (number)**

*Thousands*

	2000	2001	2002	2003	2004
Live exports	361	125	352	445	463
Export slaughterings	3,049	3,188	3,036	2,834	2,707
Other slaughterings	102	67	73	38	28
<b>Total disposals</b>	<b>3,512</b>	<b>3,380</b>	<b>3,462</b>	<b>3,317</b>	<b>3,197</b>
Imports	231	60	100	60	20
Change in stocks	-1	32	19	-50	26
<b>Output of pigs</b>	<b>3,280</b>	<b>3,351</b>	<b>3,380</b>	<b>3,207</b>	<b>3,203</b>

Source: CSO

**Table 9.17 Output of pigs (value)**

*€m*

	2000	2001	2002	2003	2004
Live exports	30	12	30	37	42
Export slaughterings	275	331	277	251	260
Other slaughterings	9	6	6	3	2
<b>Total disposals</b>	<b>314</b>	<b>350</b>	<b>313</b>	<b>292</b>	<b>304</b>
Imports	19	6	12	7	2
Change in stocks	1	2	0	-1	-1
<b>Output of pigs</b>	<b>297</b>	<b>346</b>	<b>301</b>	<b>283</b>	<b>301</b>

Source: CSO

TABLE 9.16

TABLE 9.17

**Table 9.18 Output of sheep (number)**

	<i>Thousands</i>				
	2000	2001	2002	2003	2004
Live exports	135	20	25	35	71
Export slaughterings	3,552	3,500	2,925	2,792	3,229
Other slaughterings	564	403	383	367	336
<b>Total disposals</b>	<b>4,252</b>	<b>3,923</b>	<b>3,333</b>	<b>3,194</b>	<b>3,637</b>
Imports	375	217	265	272	321
Change in stocks	-263	-249	22	22	-293
<b>Output of sheep</b>	<b>3,614</b>	<b>3,457</b>	<b>3,089</b>	<b>2,944</b>	<b>3,022</b>

Source: CSO

**Table 9.19 Output of sheep (value)**

	<i>€m</i>				
	2000	2001	2002	2003	2004
Live exports	8	2	2	2	5
Export slaughterings	194	281	193	184	209
Other slaughterings	36	35	29	28	28
<b>Total disposals</b>	<b>239</b>	<b>318</b>	<b>224</b>	<b>214</b>	<b>242</b>
Imports	23	19	19	20	23
Change in stocks	-12	-15	-2	-1	-16
<b>Output of sheep</b>	<b>203</b>	<b>284</b>	<b>202</b>	<b>193</b>	<b>203</b>

Source: CSO

TABLE 9.18

TABLE 9.19

**Table 9.20 Agricultural output price index**

Base year 2000=100

	1996	1997	1998	1999	2000	2001	2002	2003	2004
<b>Total outputs</b>	<b>105.3</b>	<b>98.8</b>	<b>98.0</b>	<b>94.0</b>	<b>100.0</b>	<b>104.2</b>	<b>99.9</b>	<b>99.6</b>	<b>101.8</b>
Cattle	101.7	96.3	93.4	89.1	100.0	92.3	94.4	93.6	103.2
Sheep	109.6	112.4	96.5	88.7	100.0	142.9	121.3	119.5	117.7
Pigs	123.4	109.9	89.0	80.6	100.0	112.9	98.6	95.4	103.3
Poultry	105.9	108.3	104.0	98.6	100.0	103.1	105.5	105.6	111.6
Milk	105.4	97.8	101.1	98.4	100.0	104.3	97.1	95.6	95.3
Cereals	115.8	94.8	99.0	104.8	100.0	104.4	91.8	109.0	100.9
Sugar beet	96.0	97.6	98.6	99.5	100.0	102.8	103.8	103.8	103.8
Potatoes	85.2	73.0	146.5	118.2	100.0	152.1	148.0	154.2	97.6
Vegetables	96.3	92.1	97.8	97.2	100.0	105.4	114.9	110.0	110.7

Source: CSO

**Table 9.21 Agricultural input price index**

Base year 2000=100

	1996	1997	1998	1999	2000	2001	2002	2003	2004
<b>Total inputs</b>	<b>97.3</b>	<b>95.3</b>	<b>93.0</b>	<b>94.1</b>	<b>100.0</b>	<b>104.8</b>	<b>106.1</b>	<b>108.8</b>	<b>113.1</b>
Feeding stuffs	107.9	103.5	98.6	97.4	100.0	105.0	106.5	106.5	110.8
Fertilisers	101.0	94.8	91.3	93.3	100.0	113.4	110.5	113.0	115.1
Seeds	103.4	100.5	102.0	102.1	100.0	103.7	107.3	115.2	116.1
Energy (including electricity)	76.6	78.2	75.9	80.2	100.0	97.1	97.1	102.9	112.6
Plant protection products	100.8	100.4	100.8	100.6	100.0	100.8	101.6	101.6	103.2
Veterinary expenses	89.3	92.3	94.7	95.9	100.0	104.7	109.4	114.7	115.8
Other inputs	91.2	92.7	93.6	95.9	100.0	105.9	110.4	114.1	116.9

Source: CSO

**Annual Agricultural price indices**

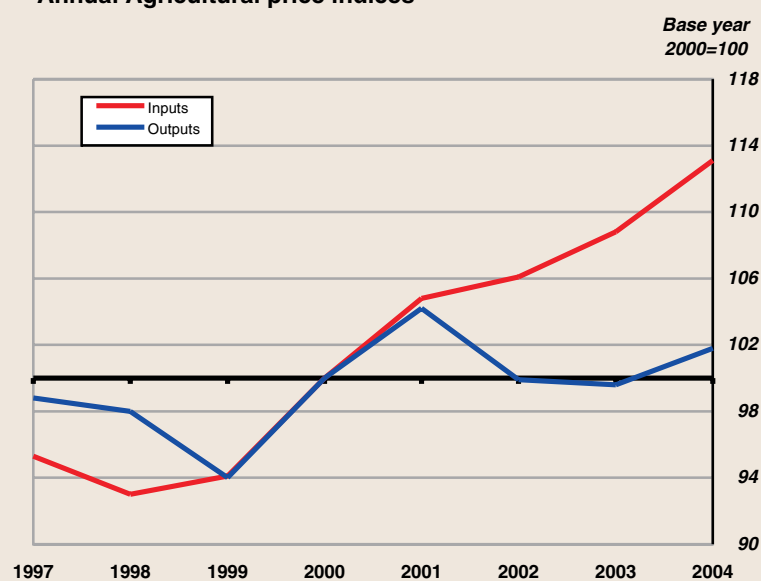


TABLE 9.20

TABLE 9.21

**Table 9.22 Average price of bullocks and heifers at auction marts**

€

	Price per 100kg (liveweight)								
	1996	1997	1998	1999	2000	2001	2002	2003	2004
<b>Bullocks</b>									
300-349 kg	158.66	156.42	144.14	125.41	166.99	163.70	171.36	171.44	188.49
350-399 kg	150.04	148.62	136.11	124.08	159.83	154.38	158.96	162.64	176.52
400-449 kg	144.43	141.90	131.05	124.45	153.33	149.14	151.01	156.52	168.06
450-499 kg	140.46	136.97	129.31	124.63	147.06	144.24	146.99	151.10	160.90
500-549 kg	138.08	134.35	127.99	123.61	141.30	138.79	143.52	146.03	156.95
550 kg and over	136.21	130.28	126.45	122.26	137.82	133.38	138.78	140.94	151.69
<b>Heifers</b>									
300-349 kg	135.92	129.76	120.55	102.08	131.46	126.10	134.13	136.34	154.20
350-399 kg	130.43	127.45	118.81	109.69	131.29	127.13	132.43	135.34	149.77
400-449 kg	129.03	125.56	118.64	112.86	130.97	127.24	131.17	134.24	146.22

Source: CSO

**Table 9.23 Average price of sheep at auction marts**

€

	Price per kg (liveweight)								
	1996	1997	1998	1999	2000	2001	2002	2003	2004
<b>Sheep</b>									
30-39 kg	1.64	1.72	1.34	1.22	1.39	1.94	1.65	1.65	1.62
40-49 kg	1.57	1.67	1.45	1.32	1.42	1.99	1.72	1.74	1.71
50-59 kg	1.51	1.60	1.29	1.24	1.39	1.95	1.70	1.61	1.61

Source: CSO

**Table 9.24 Milk – price per litre paid by creameries to producers**

€

	1995	1996	1997	1998	1999	2000	2001	2002	2003	2004
<b>Milk - price per litre</b>										
Actual fat content	0.295	0.296	0.274	0.291	0.284	0.293	0.307	0.283	0.279	0.279
Standardised at 3.7%	0.301	0.302	0.278	0.292	0.284	0.293	0.305	0.281	0.278	0.277

Source: CSO

TABLE 9.22

TABLE 9.23

TABLE 9.24

**Table 9.25 Cereal supply balance – principal cereals**

000 tonnes

	1998-99	1999-00	2000-01	2001-02	2002-03	2003-04
Production	1,865	2,011	2,174	2,165	1,964	2,147
Imports	873	858	665	640	886	792
Total availability	2,738	2,869	2,839	2,805	2,850	2,939
Exports	376	299	458	405	276	313
Stock change	72	24	-5	-54	-18	58
Domestic uses	2,290	2,546	2,385	2,453	2,593	2,568
Other uses	1,897	2,162	2,022	2,055	2,205	2,188
Available for human consumption	392	384	364	398	387	380
Available for human consumption- per person kg	105.8	102.6	95.9	103.4	99	96

Source: CSO

**Table 9.26 Meat supply balance**

000 tonnes

	1998	1999	2000	2001	2002
Production	1,049	1,113	1,018	1,025	964
Imports	84	88	105	116	112
<b>Total availability</b>	<b>1,133</b>	<b>1,201</b>	<b>1,123</b>	<b>1,141</b>	<b>1,076</b>
Exports	711	830	725	547	686
Stock change	54	-11	22	234	25
Domestic uses	369	383	377	361	365
Available for human consumption - per person kg	99.5	102.3	99.5	93.9	93.1

Source: CSO

**Domestic uses of meat**

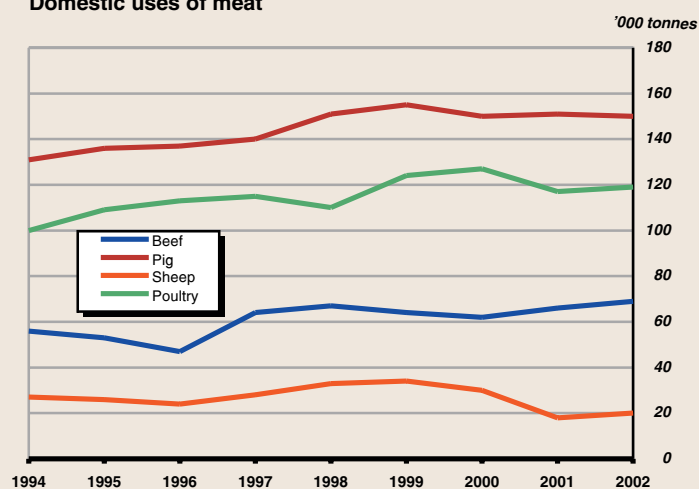


TABLE 9.25

TABLE 9.26

**Table 9.27 Milk output and use (whole milk only)**

*million litres*

	1999	2000	2001	2002	2003	2004
Milk sold off farms	4,973	5,011	5,179	5,032	5,157	5116
Milk used in farm households	45	36	36	35	35	34
Imported milk	361	304	n/a	279	349	377
<b>Total milk output</b>	<b>5,379</b>	<b>5,352</b>	<b>5,215</b>	<b>5,346</b>	<b>5,541</b>	<b>5528</b>
<i>of which:</i>						
Used for liquid consumption	509	498	502	496	487	479
Used in the manufacture of:						
Butter	3,014	3,016	2,880	3,104	3,121	3050
Cheese	1,032	999	1,245	1,186	1,092	1151
Cream	243	229	225	213	207	215
Whole milk powder	339	322	258	215	252	242
Chocolate crumb	122	147	80	55	140	50
Miscellaneous products	525	489	670	673	704	612

Source: CSO

**Table 9.28 Livestock slaughtering**

*000 head*

	1999	2000	2001	2002	2003	2004
Cattle	2,133	1,886	1,893	1,782	1,863	1,813
Pigs	3,488	3,151	3,255	3,110	2,872	2,734
Sheep	4,523	4,117	3,903	3,308	3,159	3,565

Source: CSO

**Livestock slaughtering**

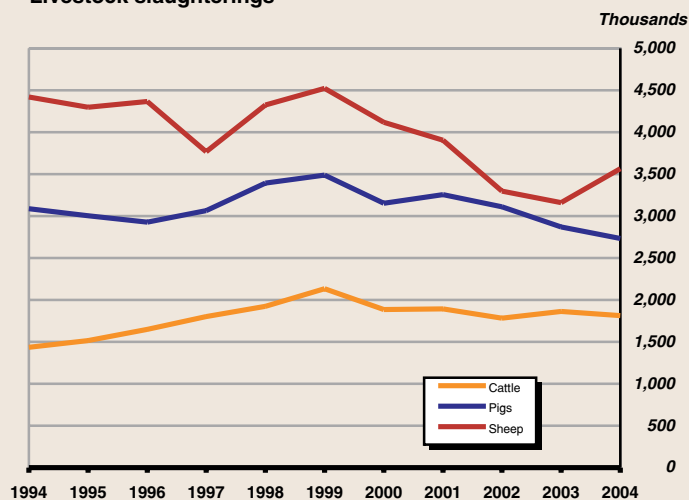


TABLE 9.27

TABLE 9.28



**Table 9.29 Sea fish landings by species**

Species	Tonnes live weight				Value €000			
	1999	2000	2001	2002	1999	2000	2001	2002
<b>Total</b>	<b>279,230</b>	<b>272,875</b>	<b>298,521</b>	<b>245,165</b>	<b>189,467</b>	<b>189,031</b>	<b>253,612</b>	<b>209,883</b>
<b>Demersal</b>	<b>39,431</b>	<b>36,772</b>	<b>43,020</b>	<b>39,993</b>	<b>65,995</b>	<b>65,330</b>	<b>95,176</b>	<b>78,682</b>
Brill	126	120	96	100	639	729	902	670
Cod	3,860	2,928	2,653	2,503	6,154	6,071	8,004	5,680
Cutlassfish	1	75	718	827	2	95	1,095	1,498
Dogfish	1,645	1,361	1,966	1,871	904	840	1,644	2,563
Dover Sole	492	376	376	334	3,858	3,321	4,483	3,794
Haddock	4,898	5,812	5,398	3,505	5,289	6,774	8,440	4,709
Hake	2,090	2,037	1,113	698	7,005	6,548	4,660	2,401
John Dory	145	174	169	154	535	600	889	655
Lemon Sole	531	468	441	482	965	798	1,288	1,197
Ling	1,138	1,089	1,464	1,305	1,045	1,069	1,953	1,627
Megrim	3,162	3,364	3,703	2,848	7,939	8,437	11,045	8,415
Monk/Angler	4,298	3,838	3,067	2,523	11,324	11,534	11,594	8,138
Orange Roughy	–	3	2,759	4,646	–	3	8,656	13,021
Plaice	1,424	1,029	841	801	2,945	2,301	2,582	2,126
Ray/Skate	2,283	2,077	2,141	2,503	2,439	2,546	4,165	2,778
Saithe	1,704	1,741	2,046	1,354	1,574	1,379	2,013	1,772
Turbot	261	236	185	184	2,124	2,226	2,249	1,950
White Pollock	1,049	1,131	1,381	1,335	1,318	1,314	2,563	2,261
Whiting	7,643	6,505	6,581	6,657	6,820	5,866	8,469	5,452
Witch	713	552	916	832	999	882	1,921	1,713
Other demersal	1,966	1,855	5,007	4,531	2,115	1,999	6,560	6,264
<b>Pelagic</b>	<b>211,264</b>	<b>206,576</b>	<b>223,740</b>	<b>173,085</b>	<b>68,063</b>	<b>65,912</b>	<b>79,375</b>	<b>63,973</b>
Blue Whiting	33,687	21,693	29,909	14,268	2,365	1,243	2,845	972
Herring	45,334	42,114	41,979	30,606	8,849	9,555	11,227	6,430
Horse Mackerel	58,201	55,438	63,497	34,769	20,219	15,429	20,847	10,394
Mackerel	59,609	70,183	70,451	71,431	19,750	28,786	35,289	38,624
Pilchard	3,195	2,592	7,856	12,002	609	765	3,464	4,055
Sprat	5,826	6,032	291	1,728	1,791	1,898	68	607
Tuna	4,909	3,486	2,105	1,313	13,638	7,407	4,674	2,444
Other pelagic	504	5,039	7,652	6,968	842	830	961	447
<b>Shellfish</b>	<b>28,534</b>	<b>29,528</b>	<b>31,760</b>	<b>32,087</b>	<b>55,410</b>	<b>57,789</b>	<b>79,061</b>	<b>67,228</b>
Blue Mussel	503	1,053	864	408	195	316	194	379
Crab	8,550	10,295	11,443	11,527	10,705	12,699	19,161	15,444
Crawfish	35	42	35	36	794	748	1,002	877
Dublin Bay Prawns	4,603	4,077	4,901	4,991	15,522	16,192	22,289	23,906
Escallop	1,497	1,577	1,411	1,139	4,232	4,006	4,597	3,367
Lobster	597	605	781	737	7,807	8,378	15,434	9,522
Periwinkle	3,014	2,634	2,775	2,274	2,863	3,482	3,351	2,268
Prawn Tails	3,889	3,632	2,173	1,992	5,183	4,647	3,761	2,986
Shrimp	551	449	269	216	3,570	3,055	2,098	1,493
Squid	282	330	378	513	711	530	859	1,068
Whelk	4,561	4,474	6,363	7,901	2,573	2,794	5,130	5,029
Other shellfish	452	359	368	351	1,254	942	1,184	888

Source: Department of Communications, Marine and Natural Resources

TABLE 9.29

**Table 9.30 Sea fish landings by consumption category**

Category	Tonnes live weight					Value €000				
	1998	1999	2000	2001	2002	1998	1999	2000	2001	2002
<b>Total</b>	<b>320,163</b>	<b>279,230</b>	<b>272,875</b>	<b>298,521</b>	<b>245,165</b>	<b>192,342</b>	<b>189,467</b>	<b>189,031</b>	<b>253,612</b>	<b>209,883</b>
Human consumption	189,738	169,014	172,657	183,544	161,224	146,149	157,876	153,798	204,639	172,948
Foreign ports	94,202	72,361	75,456	79,665	68,747	42,055	28,090	33,406	44,579	35,628
Fish meal	36,223	37,854	24,763	35,312	15,913	4,137	3,501	1,827	4,394	1,307

Source: Department of Communications, Marine and Natural Resources

**Table 9.31 Aquaculture production**

Species	Tonnes					Value €000				
	1998	1999	2000	2001	2002	1998	1999	2000	2001	2002
<b>Aquaculture</b>	<b>39,980</b>	<b>43,856</b>	<b>51,247</b>	<b>60,935</b>	<b>62,686</b>	<b>77,192</b>	<b>85,983</b>	<b>95,354</b>	<b>107,109</b>	<b>117,419</b>
Shellfish	23,200	23,516	31,110	35,853	38,175	16,950	21,639	21,512	27,944	35,484
Finfish	16,780	20,340	20,137	25,082	24,511	60,243	64,344	73,840	79,166	81,935
Salmon	14,860	18,076	17,648	23,312	22,294	49,253	54,797	61,445	70,869	71,698

Source: Bord Iascaigh Mhara

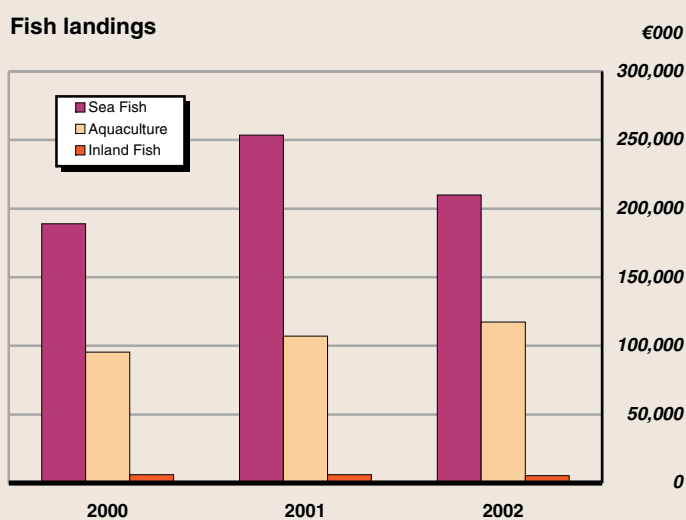


TABLE 9.30

TABLE 9.31

**Table 9.32 Inland fish catches**

Species	Tonnes					Value €000				
	1998	1999	2000	2001	2002	1998	1999	2000	2001	2002
<b>Inland</b>	<b>895</b>	<b>775</b>	<b>881</b>	<b>900</b>	<b>789</b>	<b>6,228</b>	<b>5,134</b>	<b>6,064</b>	<b>5,984</b>	<b>5,461</b>
Salmon	624	515	621	792	673	5,003	4,111	4,944	5,410	4,893
Other	271	260	260	108	116	1,226	1,023	1,120	574	568

Source: Central Fisheries Board and CSO

**Table 9.33 Sales of commercial and rod angling licences**

Type of licence	Number							
	1995	1996	1997	1998	1999	2000	2001	2002
<b>Commercial and rod</b>	<b>27,235</b>	<b>30,358</b>	<b>31,964</b>	<b>31,962</b>	<b>32,973</b>	<b>34,105</b>	<b>34,685</b>	<b>37,127</b>
<b>Commercial</b>	<b>2,111</b>	<b>2,097</b>	<b>2,083</b>	<b>2,114</b>	<b>2,015</b>	<b>1,942</b>	<b>1,960</b>	<b>1,987</b>
Drift	768	778	852	871	872	871	880	876
Draft	468	497	492	494	461	445	504	520
Other	875	822	739	749	682	626	576	591
<b>Rod</b>	<b>25,124</b>	<b>28,261</b>	<b>29,881</b>	<b>29,848</b>	<b>30,958</b>	<b>32,163</b>	<b>32,725</b>	<b>35,140</b>

Source: Central Fisheries Board

**Table 9.34 Coillte Teoranta-owned forest properties**

Description	Unit	1999	2000	2001	2002	2003	2004
Land held at 31 December	Ha	438,000	440,000	441,000	442,000	444,721	445,421
Land acquired	Ha	1,411	538	133	68	68	11
Land planted	Ha	10,396	11,045	10,307	10,006	11,775	12,256
Timber sold	Million metre <sup>3</sup>	2.51	2.73	2.55	2.71	2.66	2.66
Forest roads built	Km	107	102	124	126	139	159
Average levels of industrial employment	No.	553	511	490	605	593	564
Total amount of wages paid	€m	10.3	13.3	13.7	14.1	14.4	13.6

Source: Coillte Teoranta

TABLE 9.32

TABLE 9.33

TABLE 9.34

