

# *Education*

---

# 5

Introductory text	109	
<b>Table 5.1</b>	Persons in full-time education by level	113
<b>Graph</b>	<i>Persons in full-time education by level</i>	113
<b>Table 5.2</b>	Persons receiving full-time education and estimated participation rates for ages 15-24, 2003/04	114
<b>Graph</b>	<i>Full-time education participation rate by sex for ages 15-24, 2003/04</i>	114
<b>Table 5.3</b>	Voted expenditure by sector for financial year ended 31 December 2003	115
<b>Table 5.4</b>	Pupils in first level schools classified by standard	115
<b>Table 5.5</b>	Teaching posts in first level schools on 30 June	116
<b>Table 5.6</b>	Pupils in first level schools (ordinary classes) by sex category of schools	116
<b>Graph</b>	<i>Enrolments in second level schools – % change since 1998/99</i>	116
<b>Table 5.7</b>	Pupils and teachers in first level schools by class size, 2003/04	117
<b>Table 5.8</b>	Second level pupils classified by type of school	117
<b>Table 5.9</b>	Teachers in secondary, vocational and community schools	118
<b>Table 5.10</b>	Second level state examination candidates	118
<b>Graph</b>	<i>Pupil / Teacher ratio</i>	118
<b>Table 5.11</b>	Pupils in all second level schools by Leaving Certificate subject, 2004	119

<b>Table 5.12</b>	Leaving Certificate candidates taking selected subjects at ordinary level	120
<b>Graph</b>	<i>All Leaving Certificate students taking selected subjects, 2004</i>	120
<b>Table 5.13</b>	Leaving Certificate candidates taking selected subjects at higher level	121
<b>Table 5.14</b>	Leaving Certificate ordinary level grades for most popular subjects, 2004	122
<b>Table 5.15</b>	Leaving Certificate higher level grades for most popular subjects, 2004	122
<b>Table 5.16</b>	Educational institutions	123
<b>Table 5.17</b>	Ages of children in special schools for young offenders, 2004	123
<b>Graph</b>	<i>Grade distribution of selected Leaving Certificate higher level subjects, 2004</i>	123
<b>Table 5.18</b>	Pupils conveyed and cost of school transport service scheme	124
<b>Table 5.19</b>	First time entrants to third level courses in all institutions, 2003/04	124

# 5

## *Education*

- Third level student numbers increased by 105% between 1990/91 and 2003/04.
- In 2004, 82% of first level school teachers were female.
- 59% of new entrants to HEA institutions were female in 2003/2004.
- At age 19, 61% of females and 44% of males were in full time education.
- Secondary school enrolments declined by 11% in the 5 year period from 1998/99 but Vocational, Comprehensive and Community schools maintained their numbers.

## **Introduction**

**T**he statistics in this chapter have been obtained from the Department of Education and Science. The data include details of participation in and expenditure on first, second and third level education.

## **Persons in education**

The number of students in first level education totalled 451,755 in 2003/04. This was a slight increase over 2002/03 but represented only 78% of the 576,600 figure recorded in 1985/86. The numbers at this level have fallen substantially since then, but have risen in the last three years. In the case of second level students, the participation rate rose strongly from 1965/66 until 1995/96. Since then there has been a 9% drop in student numbers, resulting from a fall in the birth rate from the 1980s until 1996. Over the period 1965-2003, there was an increase of 592% in the third level student population. Almost 6,000 extra places were taken up in 2003/04, as compared with 2002/03. This represented an increase of 4%.

In 2003/04, participation rates for males and females differed substantially over the age group 15-22. Only a slightly greater proportion of females were in full-time education at age 15. At the age of 19, 61% of females and 44% of males were in full time education. This can be partially explained by a greater male participation in the labour force for the 15-19 age cohort, 27% versus 20% for females (see Table 2.5). The education participation rates came back into balance for ages 23 and 24.

Women formed 59% of new entrants to the HEA institutions (Universities and the Royal College of Surgeons in Ireland) in the year 2003/04, but formed only 46% of new entrants to the Institutes and Colleges of Technology.

**Table 5.1**

The information in this table refers to all Aided Institutions and those Non-Aided/Private Institutions who made student returns to the Department.

**Table 5.9**

Only teachers paid from funds provided by the Department of Education and Science are included in this table.

Part-time teaching staff includes job-sharers, eligible part-time teachers and other part-time teachers.

The data in respect of Vocational schools relate to day courses only.

**Table 5.11**

The information in this table refers to the number of second level pupils taking individual subjects in the Leaving Certificate programme.

Home Economics S & S (New Syllabus) has been introduced. Home Economics (S.S.) and Home Economics (General) are being phased out.

**Table 5.12**

The percentages in this table are the proportion of Leaving Certificate examination candidates (excluding Leaving Certificate Applied) who took a particular subject at ordinary level.

**Table 5.13**

The percentages in this table are the proportion of Leaving Certificate examination candidates (excluding Leaving Certificate Applied) who took a particular subject at higher level.

**Table 5.17**

Ages on June 30 are used for this table.

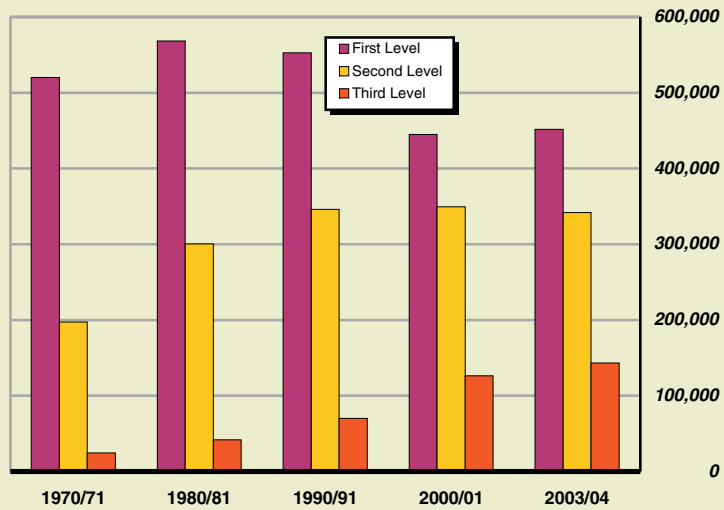


**Table 5.1 Persons in full-time education by level**

School year	Number		
	First level	Second level	Third level
1965/66	504,865	142,983	20,698
1970/71	520,129	197,142	24,496
1975/76	550,078	270,956	33,148
1980/81	568,364	300,601	41,928
1985/86	576,576	338,207	55,088
1990/91	552,528	345,941	69,988
1995/96	485,923	373,665	102,662
2000/01	444,782	349,274	126,300
2001/02	447,446	344,720	131,812
2002/03	448,754	343,596	137,323
2003/04	451,755	341,724	143,271

Source: Department of Education and Science

**Persons in full-time education by level**

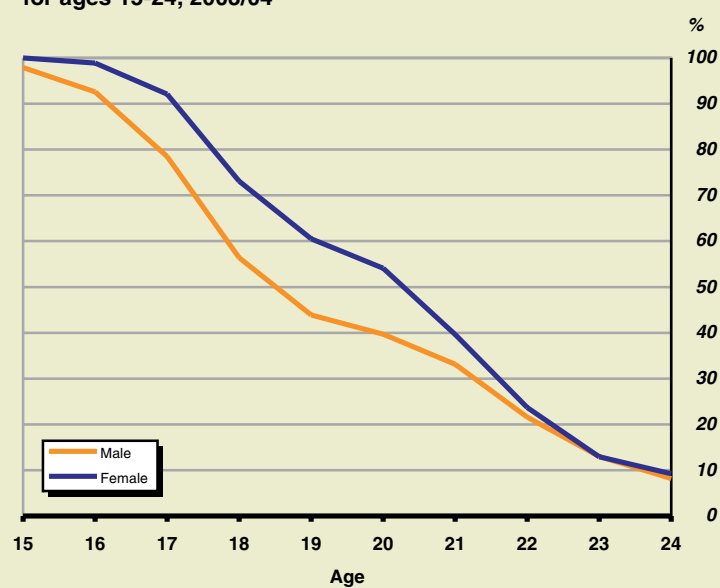


**Table 5.2 Persons receiving full-time education and estimated participation rates for ages 15-24, 2003/04**

Age	In full-time education			As % of population	
	Male	Female	Total	Male	Female
15	28,695	28,527	57,222	97.9	100.0
16	28,138	29,071	57,209	92.6	98.9
17	24,740	27,252	51,992	78.5	92.1
18	17,424	21,790	39,214	56.4	73.1
19	14,000	18,262	32,262	43.9	60.5
20	12,575	16,869	29,444	39.7	54.1
21	11,001	13,265	24,266	33.1	39.6
22	7,396	8,127	15,523	21.6	23.7
23	4,590	4,532	9,122	13.0	12.9
24	2,931	3,149	6,080	8.2	9.2

Source: Department of Education and Science

**Full-time education participation rate by sex for ages 15-24, 2003/04**





**Table 5.3 Voted expenditure by sector for financial year ended 31 December 2003**

Sector	€m		
	Current	Capital	Total
First level education	1,814.6	180.1	1,994.7
Second level education	2,008.4	171.9	2,180.3
Third level education	1,315.1	64.1	1,379.2
Office of the Minister for Education	300.7	9.9	310.6
<b>Gross expenditure</b>	<b>5,438.8</b>	<b>426.0</b>	<b>5,864.8</b>
Appropriations In Aid	181.6	–	181.6
<b>Net expenditure</b>	<b>5,257.2</b>	<b>426.0</b>	<b>5,683.2</b>

Source: Department of Education and Science

TABLE 5.3

TABLE 5.4

**Table 5.4 Pupils in first level schools classified by standard**

Standard	Number						
	1997/98	1998/99	1999/2000	2000/01	2001/02	2002/03	2003/04
Infants standard	107,496	104,123	103,133	103,832	107,500	111,355	113,150
First standard	54,558	53,892	51,659	50,818	51,138	52,166	54,770
Second standard	53,982	54,493	53,851	51,766	50,927	51,243	52,211
Third standard	53,973	53,926	54,505	54,033	51,960	51,226	51,567
Fourth standard	57,258	53,890	53,828	54,606	54,079	52,068	51,323
Fifth standard	59,140	57,292	54,048	54,063	54,916	54,476	52,405
Sixth standard	58,965	58,346	56,647	53,595	53,760	54,616	54,225
Other standard	987	773	668	631	427	379	320
Special schools	7,409	7,386	7,228	7,124	6,982	6,807	6,718
Pupils with special needs in ordinary first level schools	7,077	8,412	8,743	9,092	9,376	9,384	9,340
Private Primary Schools	5,924	5,312	6,842	5,222	6,381	5,034	5,726
<b>Total pupils</b>	<b>466,769</b>	<b>457,845</b>	<b>451,152</b>	<b>444,782</b>	<b>447,446</b>	<b>448,754</b>	<b>451,755</b>

Source: Department of Education and Science

**Table 5.5 Teaching posts in first level schools on 30 June**

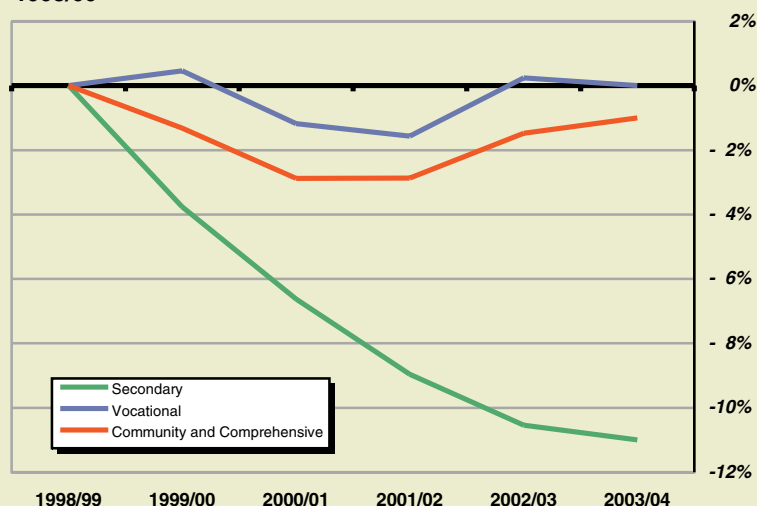
	<i>Number</i>							
<b>Sex</b>	<b>1997</b>	<b>1998</b>	<b>1999</b>	<b>2000</b>	<b>2001</b>	<b>2002</b>	<b>2003</b>	<b>2004</b>
Male	4,568	4,522	4,498	4,370	4,503	4,536	4,490	4,578
Female	16,467	16,578	17,002	17,480	18,347	19,399	20,210	21,461
<b>Total</b>	<b>21,035</b>	<b>21,100</b>	<b>21,500</b>	<b>21,850</b>	<b>22,850</b>	<b>23,935</b>	<b>24,700</b>	<b>26,039</b>

Source: Department of Education and Science

**Table 5.6 Pupils in first level schools (ordinary classes) by sex category of schools**

	<i>Number</i>							
<b>Sex category of school</b>	<b>1997/98</b>	<b>1998/99</b>	<b>1999/2000</b>	<b>2000/01</b>	<b>2001/02</b>	<b>2002/03</b>	<b>2003/04</b>	
<b>Single sex</b>	<b>104,854</b>	<b>100,248</b>	<b>97,953</b>	<b>95,379</b>	<b>93,360</b>	<b>92,208</b>	<b>90,487</b>	
Junior schools	4,012	3,889	3,993	3,920	3,970	4,005	3,981	
Senior schools	27,472	25,609	24,116	22,550	21,856	21,402	20,638	
All-through schools	73,370	70,750	69,844	68,909	67,534	66,801	65,868	
<b>Single sex with mixed junior standards</b>	<b>39,628</b>	<b>38,039</b>	<b>34,688</b>	<b>32,123</b>	<b>31,738</b>	<b>31,310</b>	<b>30,230</b>	
<b>Mixed</b>	<b>301,877</b>	298,448	295,698	295,842	299,609	304,011	309,254	
Junior schools	25,553	23,957	22,893	21,849	22,066	22,389	22,714	
Senior schools	19,509	18,734	18,006	17,469	16,922	16,714	16,222	
All-through schools	256,815	255,757	254,799	256,524	260,621	264,908	270,318	
<b>Total</b>	<b>446,359</b>	<b>436,735</b>	<b>428,339</b>	<b>423,344</b>	<b>424,707</b>	<b>427,529</b>	<b>429,971</b>	

Source: Department of Education and Science

**Enrolments in second level schools - % change since 1998/99**

**Table 5.7 Pupils and teachers in first level schools by class size, 2003/04**

Teaching teachers in school	Number of schools	Class size				Total
		0-19	20-29	30-39	40 and over	
		Number				
1	9	87	–	–	–	87
2	560	13,867	7,196	250	–	21,313
3	445	11,904	22,813	2,096	–	36,813
4	381	6,978	33,213	6,186	46	46,423
5	324	4,215	21,115	5,867	40	31,237
6	215	2,869	18,296	6,360	–	27,525
7	166	2,477	15,270	8,515	–	26,262
8	102	3,069	21,402	10,724	–	35,195
9	76	2,455	13,621	8,072	–	24,148
10 and over	872	18,484	104,091	58,267	126	180,968
<b>Total</b>	<b>3,150</b>	<b>66,405</b>	<b>257,017</b>	<b>106,337</b>	<b>212</b>	<b>429,971</b>

Source: Department of Education and Science

TABLE 5.7

TABLE 5.8

**Table 5.8 Second level pupils classified by type of school**

Category	Number						
	1997/98	1998/99	1999/2000	2000/01	2001/02	2002/03	2003/04
Secondary	217,303	211,369	203,418	197,376	192,436	189,093	187,563
Vocational	97,309	97,998	98,451	96,842	96,467	98,233	98,134
Community and Comprehensive	53,548	52,684	51,991	51,166	51,175	51,905	52,154
<b>Total</b>	<b>368,160</b>	<b>362,051</b>	<b>353,860</b>	<b>345,384</b>	<b>340,078</b>	<b>339,231</b>	<b>337,851</b>

Source: Department of Education and Science

**Table 5.9 Teachers in secondary, vocational and community schools**

Number

Category	1997/98	1998/99	1999/2000	2000/01	2001/02	2002/03	2003/04
<b>Secondary</b>							
Full-time	12,655	12,180	12,418	12,476	12,424	12,447	11,835
Full-time equivalent of part-time	604	1,043	1,175	1,361	1,582	1,680	1,326
<b>Vocational</b>							
Full-time	5,290	5,497	5,625	5,788	5,685	5,933	5,977
Full-time equivalent of part-time	1,226	1,105	1,156	1,381	1,607	1,417	1,581
<b>Community and Comprehensive</b>							
Full-time	3,121	3,129	3,058	3,171	3,410	3,682	3,602
Full-time equivalent of part-time	414	481	534	434	479	533	490
<b>Total</b>							
Full-time	21,066	20,806	21,101	21,435	21,519	22,062	21,414
Full-time equivalent of part-time	2,244	2,629	2,865	3,176	3,668	3,630	3,397

Source: Department of Education and Science

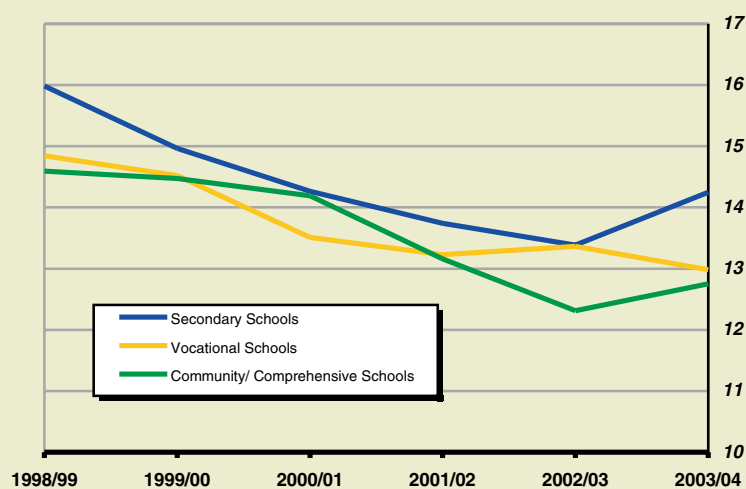
**Table 5.10 Second level state examination candidates**

Number

Examination	1997	1998	1999	2000	2001	2002	2003	2004
<b>Junior Certificate</b>	<b>67,053</b>	<b>65,608</b>	<b>62,659</b>	<b>61,470</b>	<b>60,124</b>	<b>60,152</b>	<b>59,340</b>	<b>56,864</b>
Male	33,740	33,137	31,773	31,302	30,308	30,150	29,855	28,495
Female	33,313	32,471	30,886	30,168	29,816	30,002	29,485	28,369
<b>Leaving Certificate</b>	<b>63,234</b>	<b>65,922</b>	<b>64,936</b>	<b>63,419</b>	<b>59,537</b>	<b>58,400</b>	<b>59,536</b>	<b>58,742</b>
Male	29,995	31,333	30,811	30,138	28,176	27,716	28,532	28,059
Female	33,239	34,589	34,125	33,281	31,361	30,684	31,004	30,683
<b>All examination candidates</b>	<b>130,287</b>	<b>131,530</b>	<b>127,595</b>	<b>124,889</b>	<b>119,661</b>	<b>118,552</b>	<b>118,876</b>	<b>115,606</b>
Male	63,735	64,470	62,584	61,440	58,484	57,866	58,387	56,554
Female	66,552	67,060	65,011	63,449	61,177	60,686	60,489	59,052

Source: Department of Education and Science

**Pupil / Teacher ratio**



**Table 5.11 Pupils in all second level schools by Leaving Certificate subject, 2004**

Number

Subject	Number of pupils			% studying subject	
	Boys	Girls	Total	Boys	Girls
Irish	48,641	51,650	100,291	95	95
English	51,129	54,095	105,224	100	100
Latin	172	63	235	0	0
Greek	19	4	23	0	0
French	28,587	38,146	66,733	56	70
German	7,912	9,269	17,181	15	17
Italian	241	312	553	0	1
Spanish	1,529	2,401	3,930	3	4
History	12,981	9,874	22,855	25	18
Geography	29,714	26,639	56,353	58	49
Mathematics	51,133	53,987	105,120	100	100
Applied Maths	1,479	507	1,986	3	1
Physics	12,570	4,009	16,579	25	7
Chemistry	6,462	7,963	14,425	13	15
Physics and Chemistry	1,145	543	1,688	2	1
Agricultural Science	5,080	1,423	6,503	10	3
Biology	16,241	33,331	49,572	32	61
Agricultural Economics	94	41	135	0	0
Engineering	10,533	584	11,117	21	1
Technical Drawing	11,807	941	12,748	23	2
Construction Studies	18,438	1,367	19,805	36	3
Home Economics (S.S)	11	89	100	0	0
Home Economics S & S (New syllabus)	3,748	27,178	30,926	7	50
Home Economics (General)	2	18	20	0	0
Accounting	6,450	7,857	14,307	13	14
Business Studies	18,835	22,555	41,390	37	42
Economics	5,756	3,163	8,919	11	6
Economic History	124	80	204	0	0
Art (with Design option)	4,436	6,674	11,110	9	12
Art (with Craftwork option)	3,407	6,485	9,892	7	12
Physical Education	28,338	32,821	61,159	55	61
Classical Studies	518	650	1,168	1	1
Computer Studies	13,179	17,334	30,513	26	32
Keyboarding	35	13	48	0	0
Choir	292	4,432	4,724	1	8
Orchestra	0	49	49	0	0
Religious Education	43,421	47,995	91,416	85	89
Typewriting	222	399	621	0	1
Health Education	415	1,679	2,094	1	3
Speech and Drama	17	2,001	2,018	0	4
Music	1,873	6,382	8,255	4	12
<b>Leaving Certificate Programme</b>	<b>51,292</b>	<b>54,230</b>	<b>105,522</b>		

Source: Department of Education and Science

TABLE 5.11

**Table 5.12 Leaving Certificate candidates taking selected subjects at ordinary level**

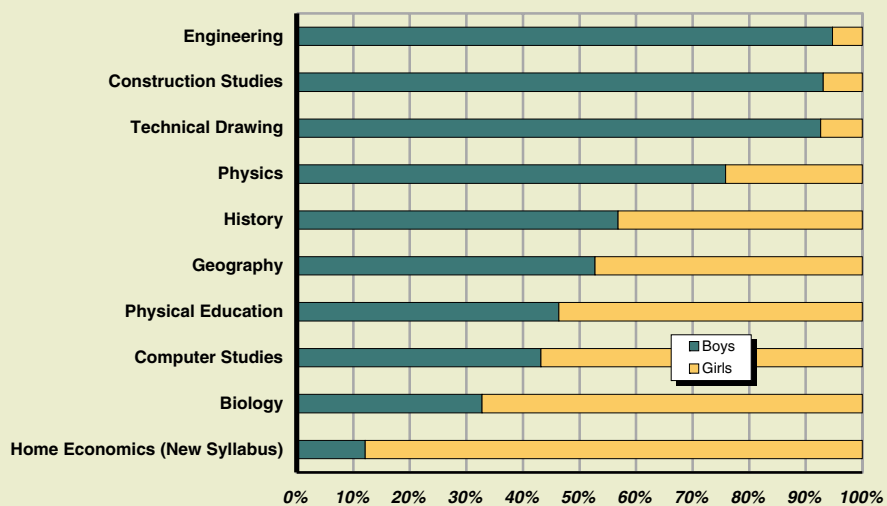
%

Subject	1997	1998	1999	2000	2001	2002	2003	2004
Mathematics	66	70	70	70	71	70	70	68
Irish	52	53	53	52	53	52	52	52
English	43	43	42	43	39	39	37	37
French	29	30	30	32	31	31	31	29
Biology	18	18	18	17	17	15	16	15
Geography	13	13	11	13	13	13	13	13
Business Studies	15	15	11	13	14	13	13	13
Mathematics (Alt/Ord)	10	9	9	10	9	10	10	11
Home Economics (S & S)	11	10	10	10	9	9	9	9
Irish (Foundation)	9	9	9	9	9	10	9	9
History	9	9	8	8	7	7	8	8
German	6	6	6	6	6	6	6	6
Technical Drawing	7	6	6	6	6	5	5	5
Art	5	5	5	5	5	5	5	5
Physics	5	5	5	5	5	5	5	4
Accounting	5	5	5	5	4	4	4	4
Construction Studies	4	4	4	4	4	4	4	4
Engineering	3	3	3	2	2	3	3	3
Economics	2	2	2	2	2	2	2	2
Chemistry	2	2	2	2	2	2	2	2
Agricultural Science	1	1	1	1	1	2	2	2
Spanish	1	1	1	1	1	1	1	1
Music	0	0	1	1	1	1	1	1
Physics and Chemistry	1	1	1	0	0	1	0	0

Source: Department of Education and Science

TABLE 5.12

**All Leaving Certificate students taking selected subjects, 2004**



**Table 5.13 Leaving Certificate candidates taking selected subjects at higher level**

	%							
<b>Subject</b>	<b>1997</b>	<b>1998</b>	<b>1999</b>	<b>2000</b>	<b>2001</b>	<b>2002</b>	<b>2003</b>	<b>2004</b>
English	48	53	53	53	55	57	58	59
Geography	30	33	36	37	38	38	39	39
Business Studies	20	23	28	29	29	29	28	27
Irish	25	28	27	28	28	27	27	27
French	26	27	29	28	28	27	27	27
Biology	28	30	28	27	26	25	25	29
Home Economics (S & S)	24	27	27	25	25	24	23	19
Mathematics	16	17	17	18	18	17	17	17
History	13	14	13	13	12	12	13	12
Art	11	11	11	11	11	12	12	13
Construction Studies	9	10	10	11	11	11	12	12
Physics	11	11	10	10	10	11	11	11
Chemistry	10	10	9	9	9	10	10	11
German	10	10	11	11	10	9	9	9
Accounting	9	9	10	9	9	8	8	9
Economics	6	6	6	6	7	7	7	7
Engineering	5	5	5	6	6	6	6	6
Technical Drawing	5	5	6	6	6	6	6	6
Music	0	0	4	5	5	6	6	7
Agricultural Science	3	3	3	4	4	4	4	4
Applied Mathematics	2	2	2	2	2	2	2	2
Spanish	1	2	2	1	2	2	2	2
Physics and Chemistry	1	1	2	1	1	1	1	1
Classical Studies	1	1	1	1	1	2	1	1

Source: Department of Education and Science

TABLE 5.13

**Table 5.14 Leaving Certificate ordinary level grades for most popular subjects, 2004**

Subject	Grade					%
	A	B	C	D	E or lower	
Mathematics	16	29	25	19	12	
Irish	5	40	35	17	4	
English	8	30	39	19	3	
French	1	21	43	29	5	
Biology	2	18	32	31	18	
Geography	8	30	33	21	7	
Business Studies	15	35	29	17	4	
Mathematics (Alt/Ord)	10	33	32	18	7	
Home Economics (S & S)	1	18	41	31	10	
Irish (Foundation)	7	38	40	14	1	
History	26	21	17	19	17	
German	3	35	37	18	7	
Technical Drawing	13	30	27	20	10	
Art	2	22	47	25	4	
Physics	14	34	24	17	11	
Accounting	22	26	20	17	15	
Construction Studies	1	20	41	29	10	
Engineering	3	26	42	23	5	
Economics	11	31	32	20	6	
Chemistry	9	30	31	21	9	

Source: Department of Education and Science

TABLE 5.14

TABLE 5.15

**Table 5.15 Leaving Certificate higher level grades for most popular subjects, 2004**

Subject	Grade					%
	A	B	C	D	E or lower	
English	11	28	39	21	1	
Geography	8	27	37	23	5	
Business Studies	11	29	32	22	6	
Irish	11	34	39	16	1	
French	12	26	34	25	4	
Biology	16	29	28	20	7	
Home Economics (S & S)	5	29	41	22	3	
Mathematics	16	30	31	18	4	
History	14	29	30	20	7	
Art	4	33	42	19	1	
Construction Studies	7	35	39	17	3	
Physics	19	30	24	20	8	
Chemistry	23	30	23	16	8	
German	15	31	34	19	2	
Accounting	21	34	24	15	6	
Economics	12	31	27	23	6	
Engineering	8	30	36	22	4	
Technical Drawing	14	30	30	20	5	
Music	12	54	29	5	1	
Agricultural Science	12	27	32	23	5	
Applied Mathematics	29	25	21	15	9	
Spanish	18	25	33	22	2	
Physics and Chemistry	13	27	27	25	8	
Classical Studies	8	28	30	22	13	

Source: Department of Education and Science



**Table 5.16 Educational institutions**

Level	Number						
	1989/1990	1994/95	1999/2000	2000/01	2001/02	2002/03	2003/04
First level	3,428	3,387	3,340	3,323	3,329	3,318	3,321
Second level	838	809	782	780	775	769	763
Third level	50	55	56	54	55	55	56
<b>Total</b>	<b>4,316</b>	<b>4,251</b>	<b>4,178</b>	<b>4,157</b>	<b>4,159</b>	<b>4,142</b>	<b>4,140</b>
of which aided by the Department of Education and Science	4,204	4,126	4,080	4,072	4,067	4,063	4,055

Source: Department of Education and Science

**Table 5.17 Ages of children in special schools for young offenders, 2004**

Age	Number							
	Committed		On remand		Health Act		Total	
	Boys	Girls	Boys	Girls	Boys	Girls	Boys	Girls
12 and under	–	–	–	–	9	–	9	–
13	3	–	1	–	2	–	6	–
14	7	–	7	1	3	–	17	1
15	15	–	8	–	5	–	28	–
16	16	3	1	2	–	–	17	5
17 and over	–	2	–	–	–	–	–	2
<b>Total</b>	<b>41</b>	<b>5</b>	<b>17</b>	<b>3</b>	<b>19</b>	<b>–</b>	<b>77</b>	<b>8</b>

Source: Department of Education and Science

**Grade distribution of selected Leaving Certificate higher level subjects, 2004**

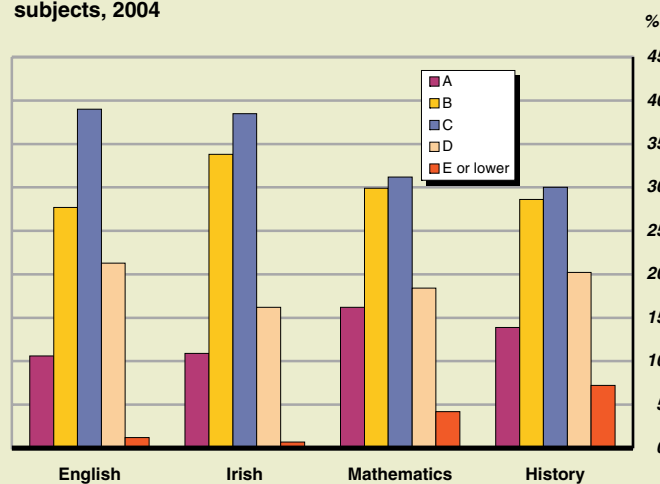


TABLE 5.16

TABLE 5.17

**Table 5.18 Pupils conveyed and cost of school transport service scheme**

Level	2002		2003	
	Pupils conveyed	Expenditure €m	Pupils conveyed	Expenditure €m
<b>First level</b>	<b>53,040</b>	<b>50.5</b>	<b>53,144</b>	<b>54.7</b>
Public scheduled services	1,855	0.4	1,625	0.4
Special school services	51,185	50.1	51,519	54.3
<b>Second level</b>	<b>75,700</b>	<b>43.2</b>	<b>76,876</b>	<b>44.4</b>
Public scheduled services	8,538	3.0	8,224	3.4
Special school services	67,162	40.2	68,652	41.0
<b>Total</b>	<b>128,740</b>	<b>93.7</b>	<b>130,020</b>	<b>99.1</b>

Source: Department of Education and Science

**Table 5.19 First time entrants to third level courses in all institutions, 2003/04**

Type of institution	Number		
	Male	Female	Total
HEA Institutions	7,208	10,557	17,765
IOT/Technological Sector	9,392	7,895	17,287
Other	1,857	1,926	3,783
<b>Total</b>	<b>18,457</b>	<b>20,378</b>	<b>38,835</b>

Source: Department of Education and Science

TABLE 5.18

TABLE 5.19



