

# *Health and Social Conditions*

---

# 4

Introductory text and technical notes	71
<b>Table 4.1</b> Expenditure on Social Welfare, 1992-2001	77
<b>Table 4.2</b> Index of rates of payment for long-term unemployed, CPI and gross average industrial earnings, 1992-2001	77
<b>Table 4.3</b> Recipients of weekly Social Welfare payments by payment type	78
<b>Graph</b> <i>Number of recipients of weekly Social Welfare payments by programme, 2001</i>	78
<b>Table 4.4</b> Recipients of Social Welfare payments by county	79
<b>Table 4.5</b> Expenditure on Social Welfare by scheme	80-81
<b>Table 4.6</b> Financing of Social Welfare expenditure	82
<b>Table 4.7</b> Recipients by type of Old Age Pension, 1992-2001	82
<b>Table 4.8</b> Recipients and cost of Child Benefit	83
<b>Graph</b> <i>Number of families in receipt of Child Benefit by number of eligible children</i>	83
<b>Table 4.9</b> Recipients of Illness, Disability and Caring payments by type	84
<b>Table 4.10</b> Recipients of Unemployment and Employment supports by type of payment	84
<b>Graph</b> <i>Number of recipients of Unemployment Supports</i>	84
<b>Table 4.11</b> Estimated non-capital health expenditure by programme and service	85-86
<b>Table 4.12</b> Payments by General Medical Services (Payments) Board	86

<b>Table 4.13</b>	Publicly funded acute hospitals statistics, 2000	87
<b>Table 4.14</b>	Psychiatric hospitals and units: in-patients at 31 December	87
<b>Table 4.15</b>	HIV positive antibody results	88
<b>Graph</b>	<i>Cases of and deaths from AIDS</i>	88
<b>Table 4.16</b>	Main sites of occurrence of new cancers diagnosed	89
<b>Table 4.17</b>	Regular daily smokers in the population aged over 15 years, 1985-1998	90
<b>Table 4.18</b>	Persons killed and injured on roads, 1991-2000	90
<b>Table 4.19</b>	Road casualties classified by road user type, 2000	90
<b>Table 4.20</b>	Road casualties classified by age and sex, 2000	91
<b>Graph</b>	<i>Road deaths by age group, 2000</i>	91
<b>Table 4.21</b>	Fatal accidents reported to the Health and Safety Authority	92
<b>Graph</b>	<i>Causes of fires attended by brigades</i>	92
<b>Table 4.22</b>	Deaths due to fire, 1990-1999	93
<b>Table 4.23</b>	Causes of fires attended by brigades	93
<b>Graph</b>	<i>Deaths due to fire, 1990-1999</i>	93
<b>Table 4.24</b>	Number on register of Dáil Electors	94
<b>Table 4.25</b>	Votes recorded at Dáil elections	95

# 4

## *Health & Social Conditions*

### **Introduction**

**T**he statistics in this chapter relate to Social Services, Health Services, Accidents, and the Register of Electors. They have been obtained from a range of administrative sources. The information on social services provides details on Social Welfare expenditure, and recipients of Social Welfare payments. The information on Health includes details on expenditure, hospital admissions and discharges and incidence of certain diseases. Data on accidents comes from both the Health and Safety Authority in respect of accidents at work and the National Roads Authority regarding road accidents. Data on incidence and causes of fires is obtained from the Department of the Environment and Local Government.

## Social Services

The data provide a reflection of economic and social change. The changing economic situation in the second half of the 1990s is reflected especially in the overall decrease in the number of Unemployment Assistance and Unemployment Benefit recipients, with the 2001 figure of 126,447 representing only 53% of the total recorded in 1991. However this figure shows an increase of 8.9% on the 2000 figure, the first such increase since 1993. A total of 903,375 people were in receipt of a weekly social welfare payment at the end of 2001.

Over the first half of the 1990s there had been a steep increase in social welfare expenditure, which rose by 50% between 1990 and 1995. This rate of increase slackened in the following years with the 2001 level being 36% above 1997 levels. As a percentage of current government expenditure, the total varied only slightly, falling to 26.2% in 2001 from a high of 28.7% in 1995. As a proportion of Gross National Product (GNP), total Social Welfare expenditure fell to 8.2% in 2001 from 11.4% in 1995.

In 2001, the main areas of expenditure by programme group were Old Age (25.3%), Widows, Widowers & One Parent Families (18.0%), and Illness, Disability and Caring (15.7%). The administration of the social welfare system accounted for 4.8% of total expenditure.

Expenditure on Old Age Payments was almost €2 billion in 2001, an increase of 16.4% on the previous year. The overall number of old age payments rose by 8,305 in 2001, an increase of 3.1%.

The Widows' and Widowers' (contributory) pension in 2001 was just under €673 million, an increase of 12.6% on 2000. Expenditure on One-Parent Family Payment rose by 11.9% in 2001.

Expenditure on Disability Benefit and Invalidity Pensions increased by 17.4% and 13.8% respectively. Disability Allowance was introduced in 1996 and replaced the Disabled Persons Maintenance Allowance which was administered by the Health Boards. Expenditure on Disability Allowance increased by 19% in 2001.

Expenditure on the Carer's Allowance increased by €30.8 million (30.9%) in 2001. The number of recipients increased by 2,307 to 18,785.

## **Health**

The general hospital programme was by far the largest area of non-capital health expenditure, amounting to 47% of gross expenditure in 2001. Other significant areas of expenditure were the community health services and programmes for people with disabilities, which accounted for 17.% and 11.6% of gross expenditure respectively.

The most frequently occurring form of cancer for both men and women in 1997 was non-melanoma skin cancer, accounting for 31.3% of all new occurrences of the disease that year. Breast cancer was the second most usual form of the disease in women, accounting for 15.7% of all cancers in women, while cancer of the prostate accounted for 10.8% of all cancers in men in the same year.

Deaths from AIDS show an overall increase from the mid 1980s reaching their highest point in 1996, when 53 such deaths were recorded. Subsequently there was a decrease in these figures, the highest number of deaths from AIDS since 1996 was 17 deaths in 1999. 10 people died from AIDS in Ireland in 2000.

## **Accidents**

Deaths on Irish roads reached their highest point for the period 1991-2000, in 1997 with 472 deaths recorded. In 2000, 415 people died in road accidents and there were 12,043 injuries, an increase of 22% in the number of injuries compared with 1991. Car users accounted for the largest proportion of deaths (62.7%).

There was a decrease of 9% in the number of fatal accidents reported to the Health and Safety Authority in 2001, compared to 2000. The single most common known cause of fires attended by fire brigades in 1997 and 1998 were chimney/flue fires.

## **Register of Electors**

The total number on the register of Dáil electors in 2002 shows an increase of 6.7% since 1998. Cork City Council has the only Local Authority showing a decrease in 2002 compared to 2001. The largest numbers of voters in 2002 were registered in Cork and Dublin, representing 8.7% and 11.6% of the electorate respectively.

The percentage of registered voters voting in Dáil elections reached its highest since 1948 in the election of June 1969 when 76.9% of the electorate cast their vote. In the most recent election of May 2002, the number of votes cast represented only 62.6% of the total electorate. This was the lowest turn-out in any Dáil election.

**Table 4.4**

The 'other' figure under Child Related Payments includes a total of 16 recipients of Adoptive Benefit which could not be classified by county.

**Table 4.5**

Widowed Parent Grant was introduced in December 1999.

Carer's Benefit was introduced in October 2000.

Farm Assist was introduced in April 1999.

The 2000 out-turn excludes a payment of £120 million from the Social Insurance fund to the National Training Fund, which was established at end-2000. From 2001 this fund (which is under the aegis of the Department of Enterprise, Trade and Employment) is being financed by way of a new National Training Fund Levy.

**Table 4.6**

Payment to National Training Fund 2000 - see note to Table 4.5.

**Table 4.9**

Carer's Benefit was introduced in October 2000.

There were also 53 persons in receipt of Prescribed Relatives Allowance at the end of December 2000. This allowance was replaced by Carer's Allowance in 1990.

Disablement Pension is paid where a person suffers loss of physical or mental faculty as a result of an accident at work or contracting and occupational disease. It can be paid in addition to other Social Welfare payments such as Disability Benefit and Invalidity Pension and can also be paid where a person continues to work.

At the end of 2000, 885 persons were in receipt of Unemployability Supplement, which is paid as an increase to Disablement Pension where a person is permanently incapable of work and does not qualify for any other Social Welfare payment.

At the end of 2000, 60 persons were in receipt of Constant Attendance Allowance, which is paid as an increase to Disablement Pension where the degree of disablement is assessed at between 50% and 100% and the person has been certified as being in need of constant care and attention.

**Table 4.10**

Farm Assist was introduced in April 1999 and replaced the Smallholders Unemployment Assistance Scheme. The great majority of recipients of the Smallholders Unemployment Assistance Scheme transferred to Farm Assist during the course of 1999 and 2000. At the end of 2000, 7,888 persons were in receipt of Farm Assist and 163 continued to be in receipt of Smallholders Unemployment Assistance.

**Table 4.11**

2001 figures are provisional.

**Table 4.13**

District hospitals are not included in this table.

Figures for Average Number of In-Patient / Day Beds Available refer to the average number of beds available for use during the year taking beds that have been temporarily closed or opened into account.

The Average Length of Stay calculations for area and national totals exclude Incorporated Orthopaedic, NRH, Peamount, Baldoyle and Manorhamilton because of the nature of their specialities which involve substantially longer stays than in acute hospitals generally.

**Table 4.14**

The figure for the Eastern region includes the Central Mental Hospital and does not include St. Joseph's Intellectual Disability Services at St. Ita's Hospital.

**Table 4.15**

These figures are produced by the Virus Reference Laboratory and relate to categories of persons as identified either by the patients themselves or by their clinicians. 1985 figures are cumulative.

**Table 4.19**

This table omits 385 injuries where the severity of the injury was unknown.

**Table 4.20**

This table omits nine deaths where sex of casualty was not specified.





**Table 4.1 Expenditure on Social Welfare, 1992-2001**

Year	Total Social Welfare expenditure	Index of expenditure	Social Welfare expenditure as a percentage of:			
			Gross current government expenditure	Net current government expenditure	Gross National Product	Gross Domestic Product
	€m	Base 1992=100	%	%	%	%
1992	4,358	100.0	28.2	35.0	12.3	10.9
1993	4,607	105.7	27.9	34.5	11.9	10.7
1994	4,775	109.6	27.4	33.7	11.4	10.3
1995	5,332	122.3	28.7	34.7	11.4	10.1
1996	5,558	127.5	28.5	34.5	10.8	9.6
1997	5,744	131.8	26.7	32.3	9.7	8.6
1998	6,046	138.8	27.1	33.1	8.9	7.9
1999	6,283	144.2	26.0	31.9	8.3	7.2
2000	6,713	154.0	25.9	32.3	7.7	6.6
2001	7,842	179.9	26.2	38.3	8.2	6.8

Source: Department of Social and Family Affairs - Statistical Information on Social Welfare Services

**Table 4.2 Index of rates of payment for long-term unemployed, CPI and gross average industrial earnings, 1992-2001**

Base: 1992=100

Year	Long-term unemployed				Consumer Price Index	Gross average industrial earnings
	Single person	Couple	Couple with two children including Child Benefit	Couple with four children including Child Benefit		
1992	100.0	100.0	100.0	100.0	100.0	100.0
1993	103.5	103.5	104.6	104.7	101.4	105.6
1994	106.6	106.7	107.6	107.8	103.8	108.5
1995	109.3	109.3	112.2	114.2	106.3	110.8
1996	112.8	112.6	115.3	117.2	108.3	116.1
1997	118.0	117.5	119.3	121.8	110.4	119.8
1998	123.5	122.1	123.3	125.8	112.2	125.0
1999	128.5	127.5	128.4	131.0	116.0	132.0
2000	135.5	136.1	137.7	141.3	122.8	139.1
2001	149.5	152.5	159.2	158.5	128.0	152.0

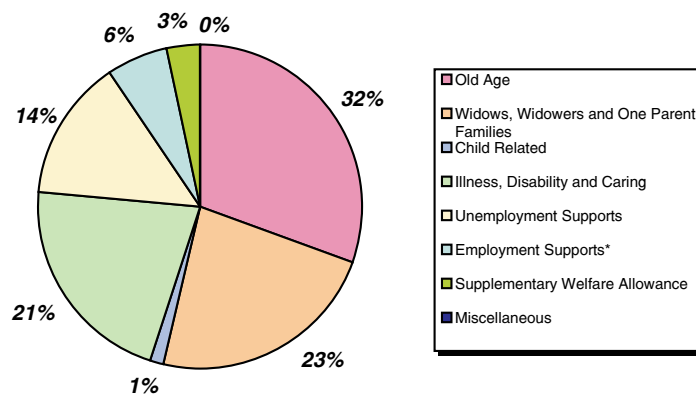
Source: Department of Social and Family Affairs - Statistical Information on Social Welfare Services

**Table 4.3 Recipients of weekly Social Welfare payments by payment type**

Type of payment	Number				
	1997	1998	1999	2000	2001
Old Age	254,297	256,809	261,281	267,760	276,065
Widows, Widowers and One Parent Families	191,438	198,094	203,091	206,130	209,011
Child Related	6,756	6,900	7,640	8,067	12,134
Illness, Disability and Caring	154,908	161,588	172,104	181,569	193,536
Unemployment Supports	223,691	182,087	149,705	116,069	126,447
Employment Supports <sup>1</sup>	50,553	55,885	65,120	64,833	56,582
Supplementary Welfare Allowance	18,279	16,300	21,269	25,094	29,167
Miscellaneous	637	586	548	472	433
<b>Total Recipients</b>	<b>900,559</b>	<b>878,249</b>	<b>880,758</b>	<b>869,994</b>	<b>903,375</b>

<sup>1</sup> Figure for 1997 includes estimated figures for Back to Work/Education allowances, part-time job incentive scheme and smallholders  
Source: Department of Social and Family Affairs - Statistical Information on Social Welfare Services

**Number of recipients of weekly Social Welfare payments by programme, 2001**



**Table 4.4 Recipients of Social Welfare payments by county**

County	Number						
	Old Age	Widows, Widowers and One Parent Families	Child Related	Illness, Disability and Caring	Live Register	Employment Supports	Supplementary Welfare Allowance
Carlow	3,142	2,543	169	3,011	2,026	907	555
Cavan	4,802	2,784	157	2,660	1,834	949	229
Clare	7,120	4,734	283	4,089	3,473	1,623	561
Cork	29,906	22,094	1,287	24,332	16,698	5,315	2,623
Donegal	11,110	7,115	389	8,208	9,896	3,869	760
Dublin	68,302	62,802	3,722	51,839	35,596	13,632	10,549
Galway	14,146	9,389	584	9,127	8,625	3,679	2,369
Kerry	10,112	6,354	354	6,396	6,162	2,335	962
Kildare	6,071	6,680	643	6,494	3,697	1,529	875
Kilkenny	5,086	3,272	229	3,458	2,182	957	563
Laois	3,695	2,603	155	2,344	1,850	657	355
Leitrim	2,622	1,484	72	1,735	1,108	619	99
Limerick	11,465	9,455	484	10,436	6,954	1,915	1,140
Longford	2,731	1,876	98	2,004	1,674	651	251
Louth	7,247	6,103	351	6,729	7,189	1,575	1,062
Mayo	10,355	6,014	296	6,556	6,094	3,244	751
Meath	6,528	5,064	474	4,919	2,855	1,052	841
Monaghan	4,121	2,588	149	2,691	2,752	1,250	182
Offaly	4,165	3,070	167	3,306	2,341	800	278
Roscommon	4,646	2,426	119	2,698	1,502	848	275
Sligo	4,513	3,055	174	3,050	2,343	1,092	240
Tipperary	10,967	7,698	426	7,367	5,466	2,069	947
Waterford	6,901	5,783	341	4,875	7,043	1,354	948
Westmeath	4,702	4,004	238	3,470	2,960	1,020	535
Wexford	8,176	6,642	318	5,767	6,257	2,022	640
Wicklow	6,568	5,919	395	4,975	3,829	1,475	577
Other	16,866	7,460	60	1,000	–	144	–
<b>Total</b>	<b>276,065</b>	<b>209,011</b>	<b>12,134</b>	<b>193,536</b>	<b>152,406</b>	<b>56,582</b>	<b>29,167</b>

Source: Department of Social and Family Affairs - Statistical Information on Social Welfare Services

TABLE 4.4

Table 4.5 Expenditure on Social Welfare by scheme

	€m				
Scheme	1997	1998	1999	2000	2001
<b>Old Age</b>	<b>1,314.6</b>	<b>1,425.5</b>	<b>1,525.5</b>	<b>1,707.0</b>	<b>1,987.3</b>
Old Age (Contributory) Pension	412.6	461.0	498.1	577.4	716.5
Retirement Pension	426.9	463.5	511.5	594.2	697.4
Old Age (Non-contributory) Pension	402.2	424.6	439.4	456.2	490.7
Pre-Retirement Allowance	72.9	76.4	76.5	79.3	82.8
<b>Widows, Widowers and One Parent Families</b>	<b>1,000.0</b>	<b>1,088.5</b>	<b>1,165.7</b>	<b>1,265.8</b>	<b>1,412.9</b>
Widow/Widower's (Contributory) Pension	478.9	517.5	547.8	597.4	672.9
Widow/Widower's (Non-contributory) Pension	79.4	84.1	88.4	94.9	107.2
Deserted Wife's Benefit	94.3	88.6	86.0	83.9	84.9
Deserted Wife's Allowance	8.8	8.5	8.4	8.4	9.2
Prisoner's Wife's Allowance	0.0	0.0	0.0	0.0	0.0
One Parent Family Payment	338.5	389.9	435.2	480.1	537.4
Widowed Parent Grant (Contributory/Non-contributory)				1.1	1.4
<b>Child Related</b>	<b>553.0</b>	<b>584.8</b>	<b>623.6</b>	<b>703.9</b>	<b>1,058.1</b>
Maternity Benefit	43.2	48.5	52.7	58.0	78.9
Health and Safety Benefit	0.2	0.1	0.2	0.2	0.2
Adoptive Benefit	0.1	0.2	0.2	0.2	0.3
Orphan's (Contributory) Allowance	2.6	3.0	3.7	5.6	9.5
Orphan's (Non-contributory) Pension	1.1	1.3	1.8	2.4	4.4
Child Benefit	505.8	531.7	565.0	637.5	964.9
<b>Illness, Disability and Caring</b>	<b>792.5</b>	<b>855.6</b>	<b>935.4</b>	<b>1,048.6</b>	<b>1,233.2</b>
Disability Benefit	228.4	241.4	262.7	280.8	329.5
Invalidity Pension	253.0	264.3	279.6	311.4	354.4
Carer's Benefit				0.0	2.5
Injury Benefit	8.6	9.0	9.3	9.8	10.9
Disablement Benefit	48.6	48.1	49.4	50.7	54.8
Death Benefit	3.4	4.1	4.4	4.7	5.1
Disability Allowance	192.8	219.6	245.2	279.2	332.3
Medical Care	0.1	0.2	0.2	0.2	0.2
Carer's Allowance	46.4	57.3	72.9	99.6	130.3
Blind Person's Pension	11.1	11.7	11.8	12.3	13.2
<b>Unemployment Supports</b>	<b>1,173.1</b>	<b>1,070.5</b>	<b>909.4</b>	<b>734.3</b>	<b>720.1</b>
Unemployment Benefit	273.3	300.5	293.8	265.2	290.3
Unemployment Assistance	899.8	770.0	615.6	469.1	429.9
<b>Employment Supports</b>	<b>156.7</b>	<b>200.2</b>	<b>251.1</b>	<b>285.3</b>	<b>283.7</b>
Family Income Supplement	33.0	36.4	41.1	39.4	37.1
Employment Support Services	123.7	163.8	190.1	204.5	196.0
Farm Assist/Smallholders	0.0	0.0	19.9	41.4	50.7

**Table 4.5 Expenditure on Social Welfare by scheme (continued)**

	€m				
Scheme	1997	1998	1999	2000	2001
<b>Supplementary Welfare Allowance and Miscellaneous</b>	<b>487.4</b>	<b>525.5</b>	<b>561.8</b>	<b>645.2</b>	<b>772.2</b>
Supplementary Welfare Allowance	200.2	223.1	239.7	294.9	363.6
Treatment Benefit	35.9	39.2	45.2	57.8	56.5
Rent Allowance	0.9	0.8	0.8	0.8	0.7
Free Schemes	188.8	194.7	196.8	204.3	241.0
Miscellaneous	32.4	39.5	50.1	64.3	76.9
Equal Treatment Payments	6.1	9.0	4.1	0.3	0.1
Redundancy and Insolvency	23.2	19.2	25.0	22.9	33.4
<b>Total</b>	<b>5,477.4</b>	<b>5,750.7</b>	<b>5,972.5</b>	<b>6,390.2</b>	<b>7,467.5</b>
Administration	267.2	296.2	309.7	323.1	374.7
<b>TOTAL EXPENDITURE</b>	<b>5,744.6</b>	<b>6,046.8</b>	<b>6,282.2</b>	<b>6,713.3</b>	<b>7,842.3</b>

Source: Department of Social and Family Affairs - Statistical Information on Social Welfare Services

TABLE 4.5

**Table 4.6 Financing of Social Welfare expenditure**

%

Source	1997	1998	1999	2000	2001
<b>Social Welfare expenditure</b>					
State	57.0	56.0	54.7	52.7	52.7
Employers	30.3	33.2	37.1	41.2	41.2
Employees	10.0	9.0	9.9	11.1	10.7
Self-employed	2.7	2.7	3.3	2.8	2.4
National Lottery	0.1	0.2	0.5	0.5	0.5
Other receipts including investment income	0.0	0.0	0.1	0.4	0.6
Social insurance fund surplus	-0.1	-1.1	-5.4	-6.5	-8.0
Payment to the National Training Fund	0.0	0.0	0.0	-2.3	-
<b>Total %</b>	<b>100.0</b>	<b>100.0</b>	<b>100.0</b>	<b>100.0</b>	<b>100.0</b>
<b>Total Expenditure (€m)</b>	<b>5,744.8</b>	<b>6,046.8</b>	<b>6,282.2</b>	<b>6,713.3</b>	<b>7,842.3</b>

Source: Department of Social and Family Affairs - Statistical Information on Social Welfare Services

**Table 4.7 Recipients by type of Old Age Pension, 1992-2001**

Number

Year	Old Age (contributory) Pension	Retirement Pension	Old Age (non-contributory) Pension	Pre- retirement Allowance	Total
1992	72,711	55,185	113,555	15,438	<b>256,889</b>
1993	71,861	58,400	111,011	15,882	<b>257,154</b>
1994	70,820	62,211	108,301	15,284	<b>256,616</b>
1995	69,179	65,761	102,984	15,023	<b>252,947</b>
1996	67,988	69,740	101,624	14,151	<b>253,503</b>
1997	70,022	71,793	98,835	13,647	<b>254,297</b>
1998	71,706	75,316	95,890	13,897	<b>256,809</b>
1999	76,241	78,868	93,023	13,149	<b>261,281</b>
2000	86,217	78,370	90,652	12,521	<b>267,760</b>
2001	94,871	80,326	89,061	11,807	<b>276,065</b>

Source: Department of Social and Family Affairs - Statistical Information on Social Welfare Services

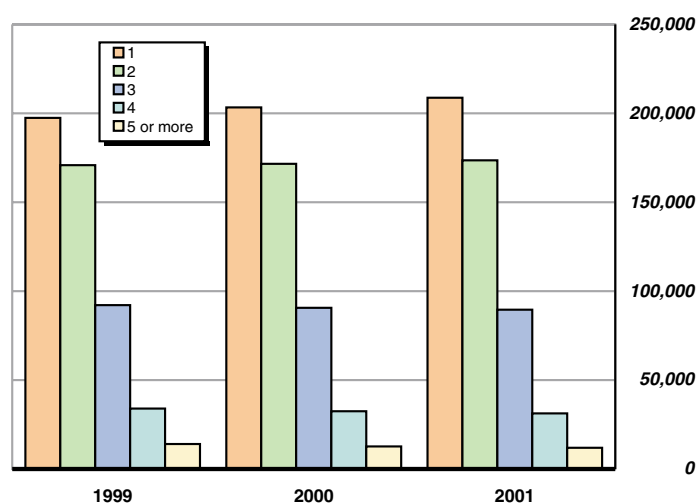
**Table 4.8 Recipients and cost of Child Benefit**

Eligible children in family	Recipient families				
	1997	1998	1999	2000	2001
1	183,271	190,083	197,457	203,342	208,712
2	168,421	169,509	170,777	171,646	173,525
3	95,450	93,671	92,172	90,667	89,564
4	37,836	35,932	33,979	32,431	31,225
5	11,652	10,592	9,651	8,795	8,257
6	3,746	3,304	2,965	2,628	2,450
7	1,201	1,071	980	869	742
8	433	401	324	294	287
9	179	145	107	89	94
10	83	57	56	48	39
11	20	22	22	20	16
12	17	16	11	7	6
13	5	6	2	3	1
14	3	2	1	1	1
15	1	-	-	-	-
<b>Total families</b>	<b>502,318</b>	<b>504,811</b>	<b>508,504</b>	<b>510,840</b>	<b>514,919</b>
<b>Total children</b>	<b>1,053,401</b>	<b>1,039,746</b>	<b>1,028,877</b>	<b>1,018,175</b>	<b>1,014,340</b>
<b>Total cost of Child Benefit (€m)</b>	<b>505.8</b>	<b>531.7</b>	<b>565.0</b>	<b>637.5</b>	<b>964.9</b>

Source: Department of Social and Family Affairs - Statistical Information on Social Welfare Services

TABLE 4.8

**Number of families in receipt of Child Benefit by number of eligible children**



**Table 4.9 Recipients of Illness, Disability and Caring payments by type**

Number

Payment type	1997	1998	1999	2000	2001
Disability Benefit	43,500	43,766	45,535	46,940	50,715
Invalidity Pension	43,633	44,925	46,946	48,663	50,615
Interim Disability Benefit	957	439	514	488	449
Carer's Benefit	-	-	-	50	425
Disability Allowance	43,192	47,126	50,431	54,303	57,655
Carer's Allowance	10,196	11,416	14,387	16,478	18,785
Blind Person's Pension	2,404	2,358	2,304	2,229	2,125
Injury Benefit	720	746	748	828	861
Death Benefit Pension	558	630	662	665	676
Disablement Pension	9,748	10,182	10,577	10,925	11,230
<b>Total</b>	<b>154,908</b>	<b>161,588</b>	<b>172,104</b>	<b>181,569</b>	<b>193,536</b>

Source: Department of Social and Family Affairs - Statistical Information on Social Welfare Services

TABLE 4.9

TABLE 4.10

**Table 4.10 Recipients of Unemployment and Employment supports by type of payment**

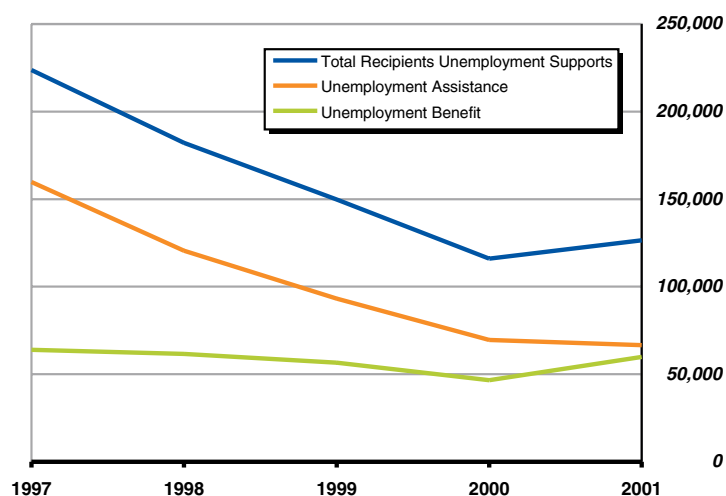
Number

Payment type	1997	1998	1999	2000	2001
<b>Total Recipients Unemployment Supports</b>	<b>223,691</b>	<b>182,087</b>	<b>149,705</b>	<b>116,069</b>	<b>126,447</b>
Unemployment Benefit	63,914	61,591	56,576	46,565	59,884
Unemployment Assistance	159,777	120,496	93,129	69,504	66,563
<b>Total Recipients Employment Supports</b>	<b>50,553</b>	<b>55,885</b>	<b>65,120</b>	<b>64,833</b>	<b>56,582</b>
Back to Work Allowance <sup>1</sup>	21,082	24,128	31,931	34,506	28,483
Back to Work Enterprise Allowance <sup>1</sup>	4,287	7,431	5,681	4,503	3,708
Back to Education Allowance <sup>1</sup>	3,753	4,139	4,518	4,237	4,101
Part-time Job Incentive Scheme <sup>1</sup>	585	568	567	474	340
Family Income Supplement	12,888	13,143	14,549	13,062	11,570
Farm Assist/Smallholders <sup>1</sup>	7,958	6,476	7,874	8,051	8,380

<sup>1</sup> Estimated for 1997

Source: Department of Social and Family Affairs - Statistical Information on Social Welfare Services

**Number of recipients of Unemployment Supports**





**Table 4.11 Estimated non-capital health expenditure by programme and service**

€m

Programme and service	1997	1998	1999	2000	2001
<b>Community Protection Programme</b>	<b>93.1</b>	<b>99.9</b>	<b>136.0</b>	<b>224.8</b>	<b>314.3</b>
Prevention of infectious disease	31.5	33.1	38.1	80.4	129.7
Child health examinations	13.3	13.7	16.1	18.2	19.4
Food hygiene and standards	16.7	18.1	24.8	41.4	49.8
Health promotion	5.6	5.7	7.6	10.5	12.5
Other preventive services	26.0	29.3	49.4	74.3	102.9
<b>Community Health Services Programme</b>	<b>600.5</b>	<b>687.2</b>	<b>883.5</b>	<b>985.0</b>	<b>1,191.6</b>
General practitioner service	365.5	405.1	548.3	554.8	652.0
Subsidy for drugs	92.6	126.3	157.1	205.1	278.2
Refund of cost of drugs for long-term illness	30.0	34.7	35.2	43.5	47.8
Home nursing services	47.2	48.5	56.5	63.7	69.5
Domiciliary maternity services	3.5	3.9	4.7	5.1	5.5
Family planning and pregnancy counselling	3.1	3.1	4.5	7.3	9.8
Dental services	48.1	53.6	64.0	88.2	106.4
Ophthalmic services	9.0	10.5	11.5	14.1	16.8
Aural services	1.5	1.5	1.8	3.2	5.7
<b>Community Welfare Programme</b>	<b>262.5</b>	<b>285.5</b>	<b>336.5</b>	<b>445.9</b>	<b>581.4</b>
Mobility allowance for disabled persons	1.4	1.5	1.7	2.2	2.0
Cash payments to persons with certain infectious diseases	1.1	1.1	0.1	0.1	0.1
Maternity cash grants	0.0	0.0	0.0	0.0	0.0
Domiciliary care allowances for disabled children	12.0	13.6	15.5	24.6	25.4
Cash payments to blind persons	2.5	2.8	2.5	3.1	3.7
Home-help services	17.1	20.1	26.6	53.6	94.2
Meals-on-wheels services	3.0	3.5	3.6	4.1	5.3
Grants to voluntary welfare agencies	56.4	46.2	55.4	59.2	63.2
Supply of milk to expectant/nursing mothers and children	1.4	1.4	1.5	1.5	1.5
Pre-school support services	2.2	4.1	4.6	10.8	15.9
Boarding out of children	13.6	17.1	19.2	23.7	31.9
Other child care services, including residential care	83.9	96.6	115.5	153.0	196.0
Welfare homes for older people	18.1	22.7	27.2	34.9	49.0
Contributions to patients in private nursing homes	49.7	54.8	63.1	75.1	93.1
<b>Psychiatric Programme</b>	<b>326.8</b>	<b>347.5</b>	<b>394.5</b>	<b>433.7</b>	<b>497.1</b>
Service for the diagnosis, care and prevention of psychiatric ailments	326.8	347.5	394.5	433.7	497.1
<b>Programme for the disabled</b>	<b>391.6</b>	<b>436.6</b>	<b>520.8</b>	<b>651.6</b>	<b>815.9</b>
Care in special homes for the mentally disabled	246.5	271.1	313.8	378.9	455.6
Care of mentally disabled persons in psychiatric hospitals	43.7	46.5	49.2	51.7	56.0
Care in day centres for the mentally disabled	33.6	36.8	42.0	49.6	59.9
Assessment and care of the blind	4.9	5.8	6.2	6.4	6.5
Assessment and care of the deaf	1.7	2.0	2.2	2.3	2.4
Assessment and care of persons otherwise disabled	40.7	52.9	75.0	95.5	148.5
Rehabilitation service	20.5	21.6	32.4	67.2	87.0

TABLE 4.11

**Table 4.11 Estimated non-capital health expenditure by programme and service (continued)**

€m

Programme and service	1997	1998	1999	2000	2001
<b>General Hospital Programme</b>	<b>1,861.9</b>	<b>1,988.5</b>	<b>2,317.7</b>	<b>2,604.5</b>	<b>3,291.4</b>
Services in regional hospitals	501.6	549.1	647.3	739.0	988.9
Services in public voluntary hospitals	744.2	825.9	962.6	1,070.4	1,356.7
Services in health board general hospitals	333.8	362.3	421.2	474.5	559.2
Services in district/community hospitals	57.2	61.2	68.1	73.3	92.2
Services in health board long-stay hospitals	130.8	141.1	160.3	182.5	223.3
Ambulance services	44.5	48.9	58.2	64.7	71.1
Contributions to patients in private hospitals	49.7	0.0	0.0	0.0	0.0
<b>General Support Programme</b>	<b>161.7</b>	<b>194.8</b>	<b>218.1</b>	<b>264.9</b>	<b>318.3</b>
Central administration	20.6	24.6	25.8	35.0	46.0
Local administration (Health Boards)	72.2	80.5	88.4	98.8	114.7
Research	8.9	10.8	12.6	16.5	21.9
Superannuation	48.0	68.2	81.4	104.6	125.4
Finance charges (including interest on borrowings)	12.0	10.7	10.0	10.0	10.4
<b>Gross Total</b>	<b>3,698.1</b>	<b>4,040.0</b>	<b>4,807.3</b>	<b>5,610.3</b>	<b>7,010.0</b>
<b>Total Non-Capital Income</b>	<b>204.9</b>	<b>220.9</b>	<b>233.4</b>	<b>251.3</b>	<b>270.8</b>
Charges for maintenance in private and semi-private accommodation in public hospitals	85.1	92.2	101.9	113.7	117.5
Other income	119.8	128.7	131.5	137.5	153.3
<b>NET TOTAL</b>	<b>3,493.1</b>	<b>3,819.1</b>	<b>4,573.9</b>	<b>5,359.1</b>	<b>6,739.2</b>

Source: Department of Health and Children - Health Statistics

**Table 4.12 Payments by General Medical Services (Payments) Board**

€m

Category	1998	1999	2000	2001
Doctors	158.3	154.8	169.9	211.8
Pharmacists	350.4	417.2	527.6	670.9
Dentists	18.1	18.3	38.1	41.7
General Practice development	8.8	9.3	10.2	11.6
High tech drugs scheme	34.4	42.3	51.9	65.1
Optometrists	–	1.8	8.7	9.8
Administration	8.5	9.3	11.8	12.7
<b>Total</b>	<b>578.6</b>	<b>653.0</b>	<b>818.2</b>	<b>1,023.6</b>

Source: General Medical Services Report

**Table 4.13 Publicly funded acute hospitals statistics, 2000**

Health Board area	Number of hospitals	Average number of in-patient beds available	In-patients discharged/deaths	Average length of stay in days	Average number of day beds available	Day cases
Eastern	23	4,894	189,593	7.7	353	156,153
Midland	3	470	29,817	5.0	37	10,525
Mid-Western	6	739	42,313	5.9	57	21,111
North-Eastern	5	866	45,628	5.3	69	16,469
North-Western	3	694	35,691	5.3	20	22,921
South-Eastern	6	1,151	63,662	5.3	55	25,034
Southern	9	1,824	82,199	6.5	77	42,413
Western	5	1,253	62,891	6.0	55	30,861
<b>Total</b>	<b>60</b>	<b>11,891</b>	<b>551,794</b>	<b>6.4</b>	<b>723</b>	<b>325,487</b>

Source: Department of Health and Children - Health Statistics

**Table 4.14 Psychiatric hospitals and units: in-patients at 31 December**

Health Board area	1996	1997	1998	1999	2000
Eastern	1,827	1,404	1,419	1,324	1,273
Midland	367	336	303	278	281
Mid-Western	452	434	429	427	424
North-Eastern	301	277	260	229	197
North-Western	250	192	191	166	141
South-Eastern	876	810	836	722	646
Southern	782	725	772	762	770
Western	720	650	618	567	505
<b>Total</b>	<b>5,575</b>	<b>4,828</b>	<b>4,828</b>	<b>4,475</b>	<b>4,237</b>

Source: Department of Health and Children - Health Statistics

TABLE 4.13

TABLE 4.14

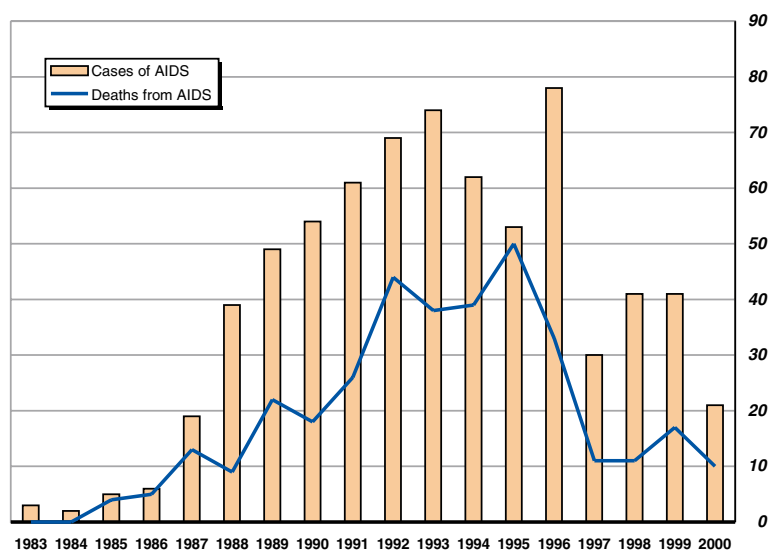
**Table 4.15 HIV positive antibody results**

Category	Cases				
	1996	1997	1998	1999	2000
Intravenous Drug Users	20	21	26	69	83
Children at Risk	n/a	n/a	n/a	n/a	n/a
Homosexuals	41	37	37	40	72
Haemophiliacs	–	–	–	n/a	n/a
Haemophiliac Contacts	1	1	–	1	–
Hospital Staff/Occupational Hazard/Needlestick	–	3	–	2	–
Transfusion	2	1	1	–	1
Blood Donors (specimens referred by BTSB)	5	1	2	1	1
Organ Donors	–	–	–	1	–
Prisoners	2	5	3	13	–
Heterosexuals/Risk Unspecified	27	40	47	59	127
<b>Total</b>	<b>98</b>	<b>109</b>	<b>116</b>	<b>186</b>	<b>284</b>

Source: Department of Health and Children - Health Statistics

**TABLE 4.15**

**Cases of and deaths from AIDS**



**Table 4.16 Main sites of occurrence of new cancers diagnosed**

Cases

Cancer site	Male		Female		Total	
	1996	1997	1996	1997	1996	1997
Non-melanoma skin	3,509	3,695	2,831	3,008	6,340	6,703
Colorectal	990	1,009	700	775	1,690	1,784
Breast	17	17	1,685	1,704	1,702	1,721
Lung	959	908	494	509	1,453	1,417
Prostate	1,152	1,130	–	–	1,152	1,130
Carcinoma of skin	328	364	705	743	1,033	1,107
Cervix	–	–	1,017	965	1,017	965
Melanoma of skin	192	232	340	385	532	617
Lymphoma	250	262	211	230	461	492
Stomach	306	297	173	173	479	470
Bladder	344	332	132	122	476	454
Pancreas	159	173	171	169	330	342
Leukaemia	189	195	137	144	326	339
Ovary	–	–	290	306	290	306
Oesophagus	188	195	110	99	298	294
Kidney	146	174	90	82	236	256
Brain	136	145	111	102	247	247
Womb	–	–	214	218	214	218
Other	1,414	1,418	1,175	1,170	2,589	2,588
<b>Total</b>	<b>10,279</b>	<b>10,546</b>	<b>10,586</b>	<b>10,904</b>	<b>20,865</b>	<b>21,450</b>

Source: Department of Health and Children - Health Statistics

TABLE 4.16

**Table 4.17 Regular daily smokers in the population aged over 15 years, 1985-1998**

%			
Year	Male	Female	Total
1985	37	32	35
1986	36	32	34
1987	34	31	32
1988	30	27	29
1989	32	27	30
1990	31	29	30
1991	30	27	28
1992	30	30	30
1993	31	26	28
1994	28	29	29
1995	31	28	29
1996	n/a	n/a	n/a
1997	n/a	n/a	n/a
1998	32	31	31

Source: Department of Health and Children - Health Statistics

**Table 4.18 Persons killed and injured on roads, 1991-2000**

Number			
Year	Number killed	Number of injuries	Total
1991	445	9,874	10,319
1992	415	10,188	10,603
1993	431	9,831	10,262
1994	404	10,229	10,633
1995	437	12,673	13,110
1996	453	13,319	13,772
1997	472	13,115	13,587
1998	458	12,773	13,231
1999	413	12,340	12,753
2000	415	12,043	12,458

Source: National Roads Authority - Road Accident Facts

**Table 4.19 Road casualties classified by road user type, 2000**

Persons				
Casualty type	Killed	Serious injury	Minor injury	Total
Pedestrians	85	215	1,019	1,319
Pedal cycle users	10	49	376	435
Motor cycle users	39	159	972	1,170
Car users	260	1,062	6,812	8,134
P.S.V. (large) users	-	18	135	153
Goods vehicle users	17	126	625	768
Other or unknown	4	11	79	94
<b>Total</b>	<b>415</b>	<b>1,640</b>	<b>10,018</b>	<b>12,073</b>

Source: National Roads Authority - Road Accident Facts

**Table 4.20 Road casualties classified by age and sex, 2000**

Persons

Age group	Male		Female		Persons	
	Killed	Injured	Killed	Injured	Total	%
0-5	4	135	4	131	274	2.3
6-9	3	133	3	108	247	2.1
10-14	3	198	5	183	389	3.3
15-17	15	299	8	172	494	4.2
18-20	55	802	8	377	1,242	10.6
21-24	51	721	3	399	1,174	10.0
25-34	69	1,527	21	924	2,541	21.7
35-44	38	825	10	553	1,426	12.2
45-54	26	563	9	422	1,020	8.7
55-64	13	325	9	255	602	5.2
65 and over	23	269	21	255	568	4.9
Unknown	2	1,044	3	662	1,711	14.6
<b>Total</b>	<b>302</b>	<b>6,841</b>	<b>104</b>	<b>4,441</b>	<b>11,688</b>	<b>100.0</b>

Source: National Roads Authority - Road Accident Facts

**Road deaths by age group, 2000**

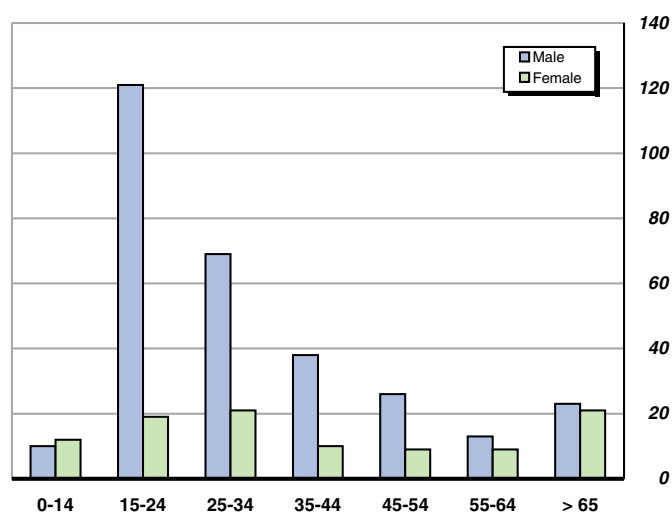


TABLE 4.20

**Table 4.21 Fatal accidents reported to the Health and Safety Authority**

Work sector	Number				
	1997	1998	1999	2000	2001
Agricultural, hunting and forestry	15	26	23	16	24
Fishing (diving)	5	6	2	7	2
Mining and quarrying	1	1	3	3	5
Manufacturing	2	4	8	9	3
Electricity, gas and water supply	–	–	–	1	–
Construction	15	22	18	18	18
Wholesale and retail trade: repair of motor vehicles, motorcycles; personal and household goods	2	1	1	3	1
Hotels and restaurants	–	1	–	0	–
Transport, storage and communications	6	4	8	4	5
Financial intermediation	–	–	–	0	–
Real estate, renting and business activities	–	1	2	3	3
Public administration and defence; compulsory and social security	–	1	2	5	2
Education	–	2	–	0	–
Health and social work	–	–	1	0	1
Other community, social and personal service activities	2	1	1	1	–
<b>Total</b>	<b>48</b>	<b>70</b>	<b>69</b>	<b>70</b>	<b>64</b>

Source: Department of Health and Children - Annual Report

**Causes of fires attended by brigades**

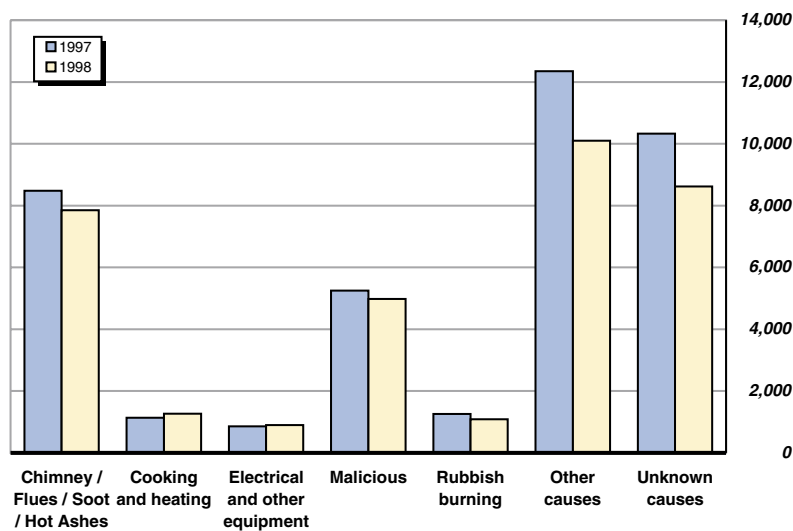


TABLE 4.21



**Table 4.22 Deaths due to fire, 1990-1999**

<i>Number</i>	
Year	Fatalities
1990	39
1991	52
1992	48
1993	51
1994	42
1995	38
1996	52
1997	51
1998	45
1999	51

Source: Department of the Environment and Local Government

**Table 4.23 Causes of fires attended by brigades**

<i>Number attended</i>		
Cause of fire	1997	1998
Chimney/Flues/Soot/Hot Ashes	8,482	7,854
Cooking and heating	1,137	1,269
Electrical and other equipment	856	899
Electrical wiring installations	449	362
Explosions	23	25
Malicious	5,250	4,980
Matches/Cigarette Lighters	465	262
Other suspected causes	917	579
Rubbish burning	1,260	1,085
Smoking materials	191	272
Using fuels to kindle fires	25	22
Unknown causes	10,326	8,621
<b>Total</b>	<b>29,381</b>	<b>26,230</b>

Source: Department of the Environment and Local Government

**Deaths due to fire, 1990-1999**

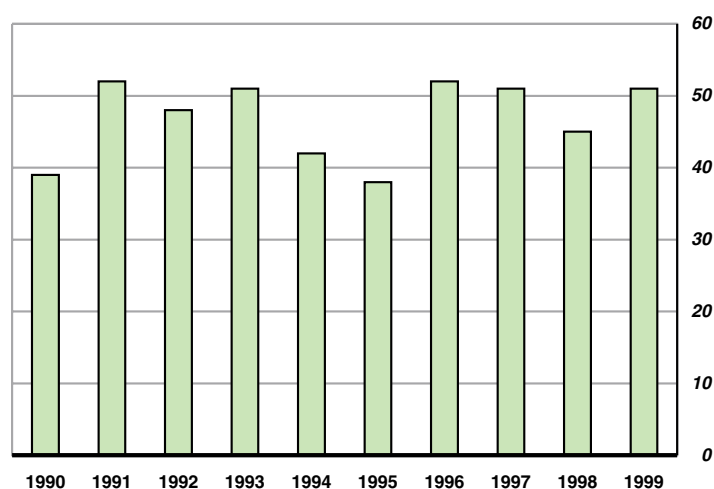


TABLE 4.22

TABLE 4.23

**Table 4.24 Number on register of Dáil Electors**

	<i>Number</i>				
<b>Local Authorities</b>	<b>1998</b>	<b>1999</b>	<b>2000</b>	<b>2001</b>	<b>2002</b>
<b>County Councils</b>	<b>2,221,733</b>	<b>2,259,649</b>	<b>2,318,730</b>	<b>2,358,805</b>	<b>2,411,793</b>
Carlow	33,297	34,169	35,179	36,054	37,008
Cavan	42,652	43,197	43,949	44,393	44,977
Clare	74,545	76,390	78,978	80,266	81,628
Cork	229,204	235,165	243,365	248,656	254,405
Donegal	103,542	105,538	106,941	108,147	110,720
Dún Laoghaire-Rathdown	148,189	148,212	148,047	148,350	149,252
Fingal	119,778	122,977	126,888	130,676	134,478
South Dublin	157,711	161,387	164,805	168,494	171,578
Galway	102,945	104,206	107,756	109,673	112,334
Kerry	100,712	101,776	102,870	104,096	105,520
Kildare	102,564	103,520	107,985	110,995	114,591
Kilkenny	56,234	57,402	58,821	59,759	61,080
Laois	39,359	40,922	42,367	43,246	44,610
Leitrim	21,200	21,332	21,945	21,914	22,246
Limerick	86,234	86,716	88,793	89,826	91,888
Longford	23,927	24,529	25,111	25,252	25,732
Louth	72,260	74,069	76,093	78,209	80,924
Mayo	87,118	88,041	90,533	91,104	92,656
Meath	92,326	94,860	98,346	102,329	107,894
Monaghan	40,581	41,237	41,378	41,601	42,110
Offaly	45,416	46,304	47,525	48,128	49,486
Roscommon	40,511	41,188	42,412	42,715	43,440
Sligo	43,712	43,876	45,087	45,441	46,150
Tipperary North	46,000	46,642	48,128	48,798	49,718
Tipperary South	58,292	58,599	60,162	60,676	61,508
Waterford	41,621	42,318	43,473	43,832	44,497
Westmeath	48,496	49,288	51,348	51,939	53,202
Wexford	84,694	85,635	88,195	91,049	93,280
Wicklow	78,613	80,154	82,250	83,187	84,881
<b>City Councils</b>	<b>546,074</b>	<b>554,087</b>	<b>550,678</b>	<b>535,339</b>	<b>540,607</b>
Cork	92,126	91,675	92,209	90,455	90,169
Dublin	347,772	355,807	351,054	337,538	342,409
Galway	38,643	39,111	39,726	40,088	40,414
Limerick	37,697	37,878	37,623	37,251	37,359
Waterford	29,836	29,616	30,066	30,007	30,256
<b>Total</b>	<b>2,767,807</b>	<b>2,813,736</b>	<b>2,869,408</b>	<b>2,894,144</b>	<b>2,952,400</b>

Source: Department of the Environment and Local Government, Franchise Section

TABLE 4.24

**Table 4.25** Votes recorded at Dáil elections

<b>Date of election</b>	<b>Numbers entitled to vote</b>	<b>Votes recorded</b>	<b>Votes recorded as percentage of numbers entitled to vote</b>
February 1948	1,800,210	1,336,628	74.2
May 1951	1,785,144	1,343,616	75.3
May 1954	1,763,828	1,347,932	76.4
March 1957	1,738,278	1,238,559	71.3
October 1961	1,670,860	1,179,738	70.6
April 1965	1,683,019	1,264,415	75.1
June 1969	1,735,388	1,334,963	76.9
February 1973	1,783,604	1,366,474	76.6
June 1977	2,118,606	1,616,770	76.3
June 1981	2,275,450	1,734,379	76.2
February 1982	2,275,450	1,679,500	73.8
November 1982	2,335,153	1,701,385	72.9
February 1987	2,445,515	1,793,506	73.3
June 1989	2,448,810	1,677,592	68.5
November 1992	2,557,036	1,751,351	68.5
June 1997	2,741,262	1,806,932	65.9
May 2002	3,002,173	1,878,609	62.6

Source: Department of the Environment and Local Government, Franchise Section

