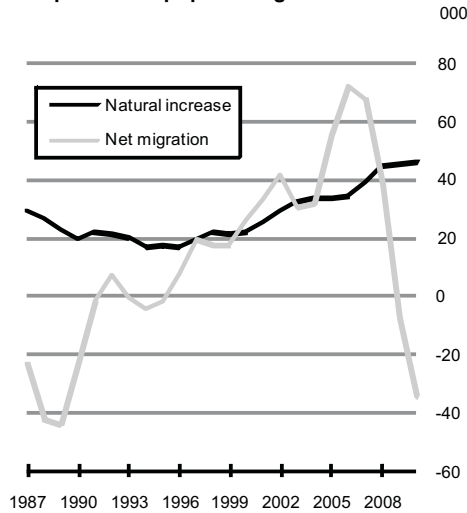


Population and Migration Estimates April 2010

Components of population growth



	Year ending	
	April 2009	April 2010
Natural increase	45,100	45,900
Net migration	- 7,800	-34,500
Population change	37,200	11,400
Population at	4,459,300	4,470,700

Highest net outward migration since the late 1980s

Emigration from Ireland in the twelve months to April 2010 is estimated to have remained broadly constant at 65,300 while the number of immigrants into Ireland fell sharply, from 57,300 to 30,800 over the same period. These combined changes have resulted in an increase in net outward migration from 7,800 in April 2009 to 34,500 in April 2010. This is the highest level of net outward migration since 1989.

While the level of overall emigration remained constant, emigration among Irish nationals increased significantly in the year, from 18,400 in April 2009 to 27,700 this year; over the same period emigration of non-Irish nationals fell from 46,800 in April 2009 to 37,600 in April 2010. Nationals of the EU12 States accounted for the bulk of this decline.

The natural increase of the population remains very strong. The number of births was 74,100 in the twelve months to April 2010, while deaths stood at 28,200, resulting in a natural increase of 45,900, or just over 1 per cent of the population. The combined effect of strong natural increase and negative net migration resulted in an overall small increase in the population of 11,400 bringing the population estimate to 4.47 million in April 2010.

The main features of the 2010 figures are:

- ◆ Of the 65,300 people who emigrated in the year to April 2010, Irish nationals were the largest group accounting for 27,700 or 42 per cent, (*see Table 3*).
- ◆ The number of immigrants from the EU12 States is estimated at 5,800 in the year to April 2010, representing a continuing decline from the peak of 52,700 in the year ending April 2007, (*see Table 2*).
- ◆ The estimated number of persons aged 65 years and over now exceeds a half a million for the first time ever.
- ◆ The overall population increase of 0.3 per cent was unevenly distributed across the regions, with the Mid-East showing the strongest growth at 1.6 per cent and Dublin showing the largest decrease of 0.3 per cent.

Published by the Central Statistics Office, Ireland.

Ardee Road
Dublin 6
Ireland

Skehard Road
Cork
Ireland

LoCall: 1890 313 414

Tel: +353-1 498 4000
Fax: +353-1 498 4229

Tel: +353-21 453 5000
Fax: +353-21 453 5555

Both offices may be contacted through any of these telephone numbers.

CSO on the Web: www.cso.ie
and go to

Census: Population: Releases and Publications

Director General: Gerard O'Hanlon

Enquiries:

Census Enquiries Census Enquiries Section,
LoCall: 1890 236 787
01 895 1460/1461/1464
census@cso.ie

Queries and Sales Information Section, ext 5021
information@cso.ie

© Central Statistics Office
The contents of this release may be quoted provided the source is given clearly and accurately. Reproduction for own or internal use is permitted.

Table 1 Components of the annual population change, 1987 - 2010

Year ending April	Components of Population change						Population change
	Births	Deaths	Natural increase	Immigrants	Emigrants	Net migration	
	000						
1987	61.2	32.2	29.0	17.2	40.2	-23.0	5.9
1988	57.8	31.6	26.2	19.2	61.1	-41.9	-15.8
1989	53.6	31.0	22.6	26.7	70.6	-43.9	-21.2
1990	51.9	32.8	19.1	33.3	56.3	-22.9	-3.7
1991	53.1	31.1	22.0	33.3	35.3	-2.0	19.9
1992	52.8	31.4	21.4	40.7	33.4	7.4	28.8
1993	50.4	30.4	20.0	34.7	35.1	-0.4	19.6
1994	49.1	32.6	16.6	30.1	34.8	-4.7	11.8
1995	48.4	31.2	17.2	31.2	33.1	-1.9	15.4
1996	48.8	32.0	16.7	39.2	31.2	8.0	24.8
1997	50.7	31.7	19.0	44.5	25.3	19.2	38.2
1998	52.7	31.2	21.5	46.0	28.6	17.4	38.8
1999	53.7	32.4	21.2	48.9	31.5	17.3	38.5
2000	54.0	32.1	21.8	52.6	26.6	26.0	47.9
2001	55.1	30.2	24.8	59.0	26.2	32.8	57.7
2002	58.1	29.3	28.8	66.9	25.6	41.3	70.0
2003	60.8	28.9	31.9	60.0	29.3	30.7	62.6
2004	62.0	28.6	33.3	58.5	26.5	32.0	65.3
2005	61.4	27.9	33.5	84.6	29.4	55.1	88.6
2006	61.2	27.0	34.2	107.8	36.0	71.8	106.0
2007 ¹	65.8	27.0	38.8	109.5	42.2	67.3	106.1
2008 ¹	72.3	27.7	44.6	83.8	45.3	38.5	83.1
2009 ¹	74.5	29.4	45.1	57.3	65.1	-7.8	37.3
2010 ¹	74.1	28.2	45.9	30.8	65.3	-34.5	11.4

¹ Preliminary

Table 2 Estimated Immigration classified by Sex and Nationality, 2005 - 2010

Sex and Nationality	Immigrants					
	2005	2006	2007 ¹	2008 ¹	2009 ¹	2010 ¹
	000					
Persons						
Irish	18.5	18.9	20.0	16.2	18.4	13.3
UK	8.9	9.9	5.9	7.0	4.4	2.4
Rest of EU15 ²	9.3	12.7	10.4	8.6	8.6	4.3
EU12 ³	34.1	49.9	52.7	33.7	13.5	5.8
USA	2.1	1.7	2.8	2.0	1.1	0.3
Rest of world	11.6	14.7	17.8	16.3	11.3	4.6
Total	84.6	107.8	109.5	83.8	57.3	30.8
Males						
Irish	9.4	9.5	10.1	7.8	10.0	6.9
UK	5.2	5.7	3.5	4.0	2.5	1.4
Rest of EU15 ²	3.8	6.4	4.8	3.8	3.0	2.0
EU12 ³	22.9	30.7	28.7	15.5	6.6	3.0
USA	0.4	0.4	1.3	1.1	0.4	0.1
Rest of world	5.7	7.6	9.1	7.7	5.6	1.9
Total	47.5	60.3	57.4	39.9	28.2	15.3
Females						
Irish	9.1	9.4	10.0	8.4	8.4	6.4
UK	3.7	4.2	2.5	3.0	1.9	1.1
Rest of EU15 ²	5.5	6.2	5.5	4.7	5.5	2.4
EU12 ³	11.2	19.2	24.0	18.2	6.9	2.8
USA	1.7	1.4	1.4	0.8	0.8	0.2
Rest of world	5.9	7.1	8.7	8.6	5.7	2.7
Total	37.1	47.5	52.1	43.9	29.1	15.5

¹ Preliminary

² Rest of EU15: countries before enlargement on 1 May 2004, i.e., Austria, Belgium, Denmark, Finland, France, Germany, Greece, Italy, Luxembourg, Netherlands, Spain, Sweden, Portugal.

³ EU12: defined as the 10 accession countries that joined the EU on 1 May 2004 (i.e., Cyprus, Czech Republic, Estonia, Hungary, Latvia, Lithuania, Malta, Poland, Slovakia, Slovenia), and includes the 2 new accession states that joined the EU on 1 January 2007 (i.e., Bulgaria and Romania).

Table 3 Estimated Emigration classified by Sex and Nationality, 2006 - 2010

Sex and Nationality	Emigrants				
	2006	2007 ¹	2008 ¹	2009 ¹	2010 ¹
	000				
Persons					
Irish	15.3	13.1	13.4	18.4	27.7
UK	2.2	2.3	2.4	2.9	2.6
Rest of EU15 ²	5.1	6.9	4.2	5.5	7.8
EU12 ³	7.2	14.4	18.8	30.1	19.1
Rest of world	6.2	5.5	6.4	8.3	8.1
Total	36.0	42.2	45.3	65.1	65.3
Males					
Irish	8.0	6.2	7.2	11.5	15.8
UK	1.6	1.4	1.7	1.8	1.6
Rest of EU15 ²	2.5	3.3	1.3	1.3	4.1
EU12 ³	3.7	9.4	13.3	20.9	13.5
Rest of world	2.8	3.2	4.2	3.4	5.4
Total	18.7	23.6	27.6	39.0	40.4
Females					
Irish	7.3	6.8	6.2	6.8	11.9
UK	0.6	0.9	0.8	1.0	0.9
Rest of EU15 ²	2.6	3.6	3.0	4.2	3.7
EU12 ³	3.4	5.0	5.5	9.2	5.6
Rest of world	3.4	2.3	2.3	4.9	2.7
Total	17.3	18.6	17.7	26.1	24.9

¹ Preliminary

² Rest of EU 15: countries before enlargement on 1 May 2004, i.e., Austria, Belgium, Denmark, Finland, France, Germany, Greece, Italy, Luxembourg, Netherlands, Spain, Sweden, Portugal.

³ EU12: defined as the 10 accession countries that joined the EU on 1 May 2004 (i.e., Cyprus, Czech Republic, Estonia, Hungary, Latvia, Lithuania, Malta, Poland, Slovakia, Slovenia), and includes the 2 new accession states that joined the EU on 1 January 2007 (i.e., Bulgaria and Romania).

Table 4 Estimated Migration classified by Sex and Country of Destination/Origin, 2005 - 2010

Sex / Year ending April	Emigrants						Immigrants						Net Migration
	UK	Rest of EU 15 ²	EU 12 ³	USA	Rest of world	Total	UK	Rest of EU 15 ²	EU 12 ³	USA	Rest of world	Total	
	000												
Persons													
2005	7.9	4.9	0.8	3.3	12.7	29.4	15.6	11.1	33.7	4.8	19.4	84.6	55.1
2006	8.8	5.7	2.3	3.3	15.8	36.0	17.7	13.5	49.3	4.0	23.3	107.8	71.8
2007 ¹	10.1	3.2	7.0	2.9	19.0	42.2	13.4	14.1	52.1	4.2	25.7	109.5	67.3
2008 ¹	7.0	7.4	9.0	2.2	19.8	45.3	14.1	10.3	33.1	3.9	22.4	83.8	38.5
2009 ¹	11.9	6.6	22.9	3.7	20.1	65.1	10.7	13.0	13.1	3.1	17.5	57.3	-7.8
2010 ¹	14.4	11.0	13.8	2.8	23.3	65.3	7.4	5.3	6.0	1.3	10.8	30.8	-34.5
Males													
2005	3.9	2.1	0.4	1.6	6.8	14.9	8.4	4.9	22.6	1.6	9.9	47.5	32.6
2006	4.5	2.4	1.0	1.6	9.3	18.7	9.7	6.8	30.5	1.7	11.6	60.3	41.6
2007 ¹	4.8	1.4	4.3	1.6	11.5	23.6	6.9	6.7	28.3	2.1	13.4	57.4	33.8
2008 ¹	3.7	3.0	6.0	1.7	13.3	27.6	7.2	4.7	15.2	1.9	10.9	39.9	12.3
2009 ¹	7.5	2.8	14.9	2.1	11.8	39.0	5.7	4.8	6.3	1.7	9.7	28.2	-10.9
2010 ¹	8.8	5.4	9.0	2.1	15.1	40.4	3.6	2.4	3.1	0.6	5.6	15.3	-25.1
Females													
2005	3.9	2.8	0.4	1.6	5.8	14.6	7.2	6.2	11.1	3.1	9.5	37.1	22.5
2006	4.4	3.3	1.4	1.7	6.6	17.3	8.0	6.7	18.8	2.3	11.8	47.5	30.2
2007 ¹	5.3	1.9	2.7	1.2	7.5	18.6	6.5	7.4	23.8	2.2	12.3	52.1	33.5
2008 ¹	3.3	4.4	3.0	0.5	6.5	17.7	6.9	5.6	17.9	2.0	11.5	43.9	26.1
2009 ¹	4.4	3.8	8.0	1.6	8.3	26.1	5.0	8.2	6.8	1.4	7.8	29.1	3.0
2010 ¹	5.6	5.6	4.9	0.7	8.1	24.9	3.8	2.8	2.9	0.7	5.2	15.5	-9.3

¹ Preliminary² Rest of EU 15 : countries before enlargement on 1 May 2004, i.e., Austria, Belgium, Denmark, Finland, France, Germany, Greece, Italy, Luxembourg, Netherlands, Spain, Sweden, Portugal.³ EU 12: defined as the 10 accession countries who joined the EU on 1 May 2004 (i.e., Cyprus, Czech Republic, Estonia, Hungary, Latvia, Lithuania, Malta, Poland, Slovakia, Slovenia), and includes the 2 new accession states who joined the EU on 1 January 2007 (i.e., Bulgaria and Romania).

Table 5 Estimated Migration classified by Sex and Age Group, 2005 - 2010

Sex / Year ending April	Emigrants						Immigrants						Net Migration
	0 - 14	15 - 24	25 - 44	45 - 64	65 and over	Total	0 - 14	15 - 24	25 - 44	45 - 64	65 and over	Total	
	000												
Persons													
2005	2.1	14.3	10.6	1.5	0.9	29.4	8.0	24.4	44.8	6.1	1.2	84.6	55.1
2006	2.2	15.9	14.2	2.0	1.6	36.0	11.5	31.6	57.2	6.1	1.4	107.8	71.8
2007 ¹	1.3	16.6	19.3	2.7	2.3	42.2	11.7	30.3	59.8	6.9	0.9	109.5	67.3
2008 ¹	1.5	18.2	20.3	2.6	2.8	45.3	13.6	23.7	39.2	5.8	1.5	83.8	38.5
2009 ¹	1.2	28.8	30.4	2.6	2.0	65.1	5.9	16.3	29.8	3.9	1.4	57.3	-7.8
2010 ¹	1.2	28.2	29.9	3.5	2.5	65.3	3.6	8.2	14.6	3.0	1.4	30.8	-34.5
Males													
2005	1.1	6.7	6.1	0.6	0.4	14.9	4.2	11.6	27.3	3.7	0.6	47.5	32.6
2006	1.1	8.0	7.6	1.2	0.8	18.7	5.5	16.4	34.0	3.7	0.7	60.3	41.6
2007 ¹	0.5	8.2	11.7	1.8	1.4	23.6	5.6	13.4	33.6	4.3	0.6	57.4	33.8
2008 ¹	0.7	10.0	13.0	2.1	1.9	27.6	6.6	10.3	19.0	3.4	0.6	39.9	12.3
2009 ¹	0.6	16.4	20.0	1.4	0.6	39.0	2.8	6.4	16.3	2.1	0.6	28.2	-10.9
2010 ¹	0.7	15.9	20.2	2.2	1.4	40.4	2.2	3.4	7.8	1.3	0.5	15.3	-25.1
Females													
2005	1.1	7.6	4.5	0.8	0.5	14.6	3.8	12.7	17.5	2.5	0.6	37.1	22.5
2006	1.1	7.9	6.5	0.9	0.9	17.3	6.0	15.2	23.2	2.4	0.7	47.5	30.2
2007 ¹	0.7	8.4	7.6	0.9	0.9	18.6	6.1	16.9	26.2	2.7	0.3	52.1	33.5
2008 ¹	0.8	8.2	7.3	0.6	0.9	17.7	7.0	13.4	20.2	2.4	0.9	43.9	26.1
2009 ¹	0.7	12.4	10.4	1.3	1.4	26.1	3.0	9.9	13.5	1.8	0.9	29.1	3.0
2010 ¹	0.5	12.3	9.7	1.3	1.1	24.9	1.5	4.8	6.8	1.7	0.8	15.5	-9.3

¹ Preliminary

Table 6 Estimated Population classified by Sex and Age Group, 2005 - 2010

Sex and Age Group	Persons in April of each year						
	2005	2006 ¹	2006 ²	2007 ³	2008 ³	2009 ³	2010 ³
	000						
Persons							
0 - 4 years	296.5	302.3	302.3	312.3	327.9	341.6	353.8
5 - 9 "	280.6	288.3	288.5	295.9	303.4	308.0	311.6
10 - 14 "	276.3	273.9	274.2	275.6	281.0	288.1	293.6
15 - 19 "	292.8	290.3	290.9	286.0	283.9	278.6	273.3
20 - 24 "	339.5	342.5	347.5	347.8	334.0	304.8	275.7
25 - 29 "	345.2	373.1	375.2	405.1	416.7	413.4	392.2
30 - 34 "	335.8	349.4	347.9	358.0	366.9	371.4	378.2
35 - 39 "	312.1	322.1	320.4	331.7	342.1	348.0	349.0
40 - 44 "	294.1	301.3	299.8	305.8	310.2	312.5	315.3
45 - 49 "	265.4	274.7	273.8	279.8	286.1	293.5	299.1
50 - 54 "	243.1	247.1	246.4	252.6	257.2	261.7	266.8
55 - 59 "	221.4	225.3	223.9	227.4	232.0	235.4	239.2
60 - 64 "	172.1	181.7	179.8	190.5	199.2	207.5	213.2
65 - 69 "	140.8	143.4	141.2	143.5	148.8	155.3	162.2
70 - 74 "	117.4	119.2	117.5	119.2	120.8	123.2	125.7
75 - 79 "	91.0	92.5	91.4	92.1	93.6	95.2	96.7
80 - 84 "	64.0	64.9	64.4	65.4	65.2	65.9	66.8
85 years and over	45.7	48.0	47.8	50.3	53.2	55.4	58.1
Total	4,133.8	4,239.8	4,232.9	4,339.0	4,422.1	4,459.3	4,470.7
Males							
0 - 4 years	151.7	154.6	154.7	160.5	168.2	175.3	181.5
5 - 9 "	144.3	148.0	148.1	151.3	154.9	157.6	159.7
10 - 14 "	142.0	140.5	140.7	141.3	144.1	147.7	150.4
15 - 19 "	149.8	148.2	148.7	145.4	144.6	141.8	139.2
20 - 24 "	170.0	172.8	175.5	175.0	165.7	148.6	133.3
25 - 29 "	174.1	189.3	190.2	204.7	209.4	204.6	191.4
30 - 34 "	168.7	177.5	176.4	182.6	185.3	186.0	187.5
35 - 39 "	157.8	163.8	162.8	169.1	174.0	175.6	174.7
40 - 44 "	147.1	151.4	150.4	153.6	155.7	157.5	158.8
45 - 49 "	132.9	138.0	137.4	140.6	143.4	147.0	149.5
50 - 54 "	122.9	124.6	124.1	127.1	129.2	131.5	133.8
55 - 59 "	112.0	113.9	113.2	114.9	117.0	118.5	120.1
60 - 64 "	86.7	91.6	90.6	96.0	100.4	104.3	106.9
65 - 69 "	69.1	70.9	69.9	71.3	73.6	76.9	80.2
70 - 74 "	55.7	56.5	55.8	56.6	57.5	58.7	60.3
75 - 79 "	38.8	40.1	39.7	40.6	41.8	42.9	43.7
80 - 84 "	24.3	24.7	24.5	25.0	25.0	25.9	26.5
85 years and over	14.0	14.8	14.8	15.5	16.6	17.5	18.6
Total	2,061.8	2,121.2	2,117.3	2,171.1	2,206.3	2,217.7	2,216.0
Females							
0 - 4 years	144.8	147.7	147.7	151.8	159.7	166.4	172.3
5 - 9 "	136.3	140.3	140.4	144.6	148.5	150.5	151.9
10 - 14 "	134.4	133.4	133.5	134.2	136.9	140.4	143.2
15 - 19 "	143.0	142.0	142.2	140.6	139.3	136.8	134.2
20 - 24 "	169.5	169.7	172.0	172.8	168.3	156.1	142.4
25 - 29 "	171.1	183.8	185.0	200.4	207.3	208.8	200.8
30 - 34 "	167.0	171.9	171.5	175.3	181.6	185.4	190.7
35 - 39 "	154.4	158.3	157.7	162.5	168.1	172.4	174.2
40 - 44 "	147.1	149.9	149.3	152.2	154.5	155.0	156.5
45 - 49 "	132.6	136.8	136.4	139.3	142.8	146.5	149.6
50 - 54 "	120.2	122.5	122.3	125.5	128.0	130.2	133.0
55 - 59 "	109.4	111.4	110.7	112.5	115.0	116.9	119.1
60 - 64 "	85.4	90.2	89.1	94.6	98.8	103.2	106.4
65 - 69 "	71.7	72.5	71.4	72.2	75.2	78.4	82.0
70 - 74 "	61.7	62.6	61.7	62.6	63.3	64.5	65.4
75 - 79 "	52.2	52.3	51.8	51.5	51.8	52.4	53.0
80 - 84 "	39.7	40.2	39.9	40.4	40.1	40.0	40.2
85 years and over	31.7	33.2	33.1	34.8	36.6	37.9	39.5
Total	2,072.0	2,118.7	2,115.6	2,167.9	2,215.8	2,241.6	2,254.7

¹ De Facto² Usual Residence³ Preliminary

Table 7 Estimated Population classified by Sex, Age Group and Regional Authority Area, April 2010¹

Sex and Age Group	State	Border	Dublin	Mid-East	Midland	Mid-West	South-East	South-West	West
000									
Persons									
0 - 4 years	353.8	38.1	95.4	47.9	22.7	29.1	38.8	49.3	32.5
5 - 9 "	311.6	36.8	75.6	42.8	21.4	25.8	36.7	43.2	29.3
10 - 14 "	293.6	36.0	70.2	37.5	19.6	25.0	34.5	42.6	28.2
15 - 19 "	273.3	33.6	67.4	32.1	17.1	23.8	31.8	40.5	26.8
20 - 24 "	275.7	30.8	78.5	30.4	15.0	24.9	30.8	40.4	24.9
25 - 29 "	392.2	37.6	130.6	44.7	21.2	29.7	38.4	53.8	36.2
30 - 34 "	378.2	36.9	118.3	48.6	21.8	28.4	38.3	51.8	34.2
35 - 39 "	349.0	37.1	97.0	47.3	21.2	28.2	37.7	48.9	31.7
40 - 44 "	315.3	36.2	80.6	41.0	20.0	26.6	35.7	45.4	29.8
45 - 49 "	299.1	33.8	77.3	36.5	18.2	25.3	34.4	44.2	29.4
50 - 54 "	266.8	30.5	68.7	30.4	16.6	23.2	30.6	39.5	27.3
55 - 59 "	239.2	27.7	60.9	26.6	14.5	21.2	27.7	36.1	24.6
60 - 64 "	213.2	25.4	53.6	22.8	12.8	19.3	24.8	32.8	21.9
65 - 69 "	162.2	19.2	41.2	16.5	9.8	14.5	19.8	25.1	16.0
70 - 74 "	125.7	14.8	33.0	11.2	7.7	11.0	15.3	19.5	13.1
75 - 79 "	96.7	11.3	25.9	7.9	5.9	8.5	11.7	15.3	10.4
80 - 84 "	66.8	8.0	18.2	5.1	4.2	5.6	8.0	10.4	7.2
85 years and over	58.1	7.0	15.0	4.8	3.6	4.6	7.0	9.2	6.9
Total	4470.7	500.7	1207.3	534.1	273.3	374.6	502.2	648.1	430.3
Males									
0 - 4 years	181.5	19.8	49.0	24.8	11.5	15.1	19.8	24.9	16.6
5 - 9 "	159.7	18.7	38.1	22.8	10.8	13.0	18.8	22.3	15.2
10 - 14 "	150.4	18.2	36.0	19.3	10.1	12.9	17.6	21.7	14.6
15 - 19 "	139.2	17.2	34.3	16.4	8.5	12.3	16.3	20.5	13.8
20 - 24 "	133.3	16.1	36.4	14.7	7.0	13.1	14.6	19.1	12.1
25 - 29 "	191.4	17.9	64.9	21.1	9.9	14.7	19.4	26.1	17.5
30 - 34 "	187.5	17.4	59.0	24.0	10.9	14.4	19.0	25.3	17.6
35 - 39 "	174.7	18.1	48.7	23.7	10.1	14.4	19.1	24.2	16.3
40 - 44 "	158.8	18.3	40.4	20.7	10.1	13.5	18.3	22.6	14.9
45 - 49 "	149.5	17.0	38.0	18.5	9.3	12.9	17.1	22.1	14.7
50 - 54 "	133.8	15.4	33.4	15.5	8.7	11.8	15.3	20.0	13.7
55 - 59 "	120.1	14.2	29.6	13.1	7.5	10.8	14.1	18.3	12.5
60 - 64 "	106.9	13.0	26.1	11.4	6.4	9.7	12.4	16.6	11.3
65 - 69 "	80.2	9.8	19.5	8.2	5.0	7.2	10.0	12.3	8.1
70 - 74 "	60.3	7.3	14.9	5.4	3.7	5.4	7.5	9.3	6.6
75 - 79 "	43.7	5.3	10.9	3.7	2.8	3.9	5.4	6.8	4.9
80 - 84 "	26.5	3.2	6.9	2.0	1.8	2.2	3.3	4.1	3.0
85 years and over	18.6	2.4	4.5	1.4	1.4	1.5	2.3	2.9	2.3
Total	2216.0	249.2	590.8	266.8	135.4	188.7	250.3	319.1	215.7
Females									
0 - 4 years	172.3	18.3	46.4	23.1	11.2	14.0	19.0	24.4	15.9
5 - 9 "	151.9	18.0	37.5	20.0	10.6	12.8	17.9	21.0	14.2
10 - 14 "	143.2	17.8	34.2	18.2	9.5	12.1	16.9	20.9	13.6
15 - 19 "	134.2	16.5	33.1	15.8	8.7	11.6	15.6	20.1	13.0
20 - 24 "	142.4	14.8	42.0	15.7	8.0	11.8	16.1	21.4	12.7
25 - 29 "	200.8	19.7	65.7	23.6	11.3	15.0	19.1	27.7	18.7
30 - 34 "	190.7	19.5	59.3	24.7	10.8	14.0	19.4	26.5	16.6
35 - 39 "	174.2	19.0	48.3	23.6	11.0	13.8	18.5	24.6	15.4
40 - 44 "	156.5	17.8	40.2	20.4	9.9	13.2	17.4	22.8	14.8
45 - 49 "	149.6	16.8	39.3	18.0	8.9	12.4	17.3	22.1	14.7
50 - 54 "	133.0	15.1	35.3	14.9	7.9	11.4	15.3	19.5	13.6
55 - 59 "	119.1	13.6	31.3	13.4	7.0	10.3	13.6	17.8	12.1
60 - 64 "	106.4	12.4	27.5	11.4	6.4	9.6	12.4	16.2	10.6
65 - 69 "	82.0	9.4	21.7	8.2	4.9	7.4	9.8	12.8	7.9
70 - 74 "	65.4	7.5	18.1	5.8	4.0	5.6	7.8	10.2	6.4
75 - 79 "	53.0	6.0	14.9	4.2	3.1	4.6	6.3	8.4	5.5
80 - 84 "	40.2	4.8	11.3	3.1	2.5	3.4	4.7	6.3	4.3
85 years and over	39.5	4.6	10.5	3.4	2.2	3.1	4.7	6.3	4.6
Total	2254.7	251.5	616.5	267.4	137.9	185.9	251.9	329.0	214.6

¹ Preliminary

Background Notes

Coverage The population for 2006 classified by age, sex and region is taken from the Census of Population 2006, which was held in April that year. The reference period for the population estimates for subsequent years is mid-April each year, while the migration flows represent movements during the twelve months up to mid-April of the same year, as do births and deaths.

Source of Migration data The principal source of information for the estimation of the gross annual migration flows is the Quarterly National Household Survey (QNHS - formerly annual Labour Force Survey), which also provides the basis for the classification of the flows by sex, age group, origin/destination and nationality.

The migration estimates are compiled against the backdrop of movements in other migration indicators such as the number of Personal Public Service (PPS) numbers allocated to non-Irish nationals, the number of work permits issued/renewed and the number of asylum applications.

Calculation of annual population estimates Annual population estimates for mid-April are calculated by trending forwards the most recent Census of Population data. For example, the base population data for estimating the April 2007 figure was the number of males and females in each region by single year of age as established by the Census of Population for 2006. From this base, each person was aged by one year, births for the period were added, and deaths were subtracted.

The estimated number of immigrants was then added and the number of emigrants was subtracted. Allowance was also made for estimated inter-regional migration in arriving at the final 2007 figures. The end result of this overall process provided the population estimate for April 2007 which in turn provided the base population for calculating the April 2008 population estimate and so on for subsequent years. The population estimates are subject to revision once the definitive results of the next census become available.

Emigration by nationality The present release contains a new table on emigration by nationality which is being published for the years 2006 onwards. This has been made possible by analysing the data on persons sampled in the QNHS who on subsequent visits are found to have left the country. The destination of emigrants for 2009 was also based on this analysis and this therefore represents a discontinuity with previous years. This new analysis is part of ongoing work aimed at improving the methodology used to measure migration.

Usual residence and de facto population concepts Up to and including 2006 the annual population estimates were calculated using the de facto definition of population, i.e., and all persons present in the State on census night. Since 2007 onwards a new concept of usual residence has been used. I.e., all persons usually resident and present in the State on census night *plus* absent persons who are usually resident in Ireland but are temporarily away from home *and outside the state* on census night. All persons are now classified according to their region of usual residence. Table 6 in the release shows 2 columns of data for the year 2006, the first is the population count using the de facto definition and the second shows the population counted using this usually resident definition. As Table 6 shows, the difference between these two definitions is very small.