

**CENSUS OF POPULATION
OF IRELAND**

1979

VOLUME III

PART I - HOUSEHOLD COMPOSITION

PART II - FAMILY UNITS

COMPILED BY THE

CENTRAL STATISTICS OFFICE

The statistics herein relate to the population of Ireland exclusive of Northern Ireland.

DUBLIN:
PUBLISHED BY THE STATIONERY OFFICE.

To be purchased from the
GOVERNMENT PUBLICATIONS SALES OFFICE, SUN ALLIANCE HOUSE, MOLESWORTH STREET, DUBLIN 2.
or through any Bookseller.

Price: £1.57

•
1
•

•
P
•

CENSUS OF POPULATION, 1979

VOLUME III

(Parts 1 and 2)

CONTENTS

	Page
INTRODUCTION	v
EXPLANATORY NOTES	vi
COMMENTARY	vii

PART I

TABLES

1.	NUMBER OF PERSONS IN PRIVATE AND NON-PRIVATE HOUSEHOLDS IN EACH PROVINCE, COUNTY AND COUNTY BOROUGH	3
2.	PRIVATE HOUSEHOLDS IN PERMANENT AND TEMPORARY HOUSING UNITS CLASSIFIED BY TYPE AND NUMBER OF PERSONS IN THE HOUSEHOLD	4
3.	PRIVATE HOUSEHOLDS IN PERMANENT AND TEMPORARY HOUSING UNITS AND MEMBERS OF PRIVATE HOUSEHOLDS CLASSIFIED BY NUMBER AND BROAD AGE GROUP OF OCCUPANTS	5
4.	PRIVATE HOUSEHOLDS IN PERMANENT AND TEMPORARY HOUSING UNITS AND PERSONS IN PRIVATE HOUSEHOLDS CLASSIFIED BY SEX, MARITAL STATUS AND AGE GROUP OF THE HEAD OF HOUSEHOLD	6
5A.	PERSONS, MALES AND FEMALES AGED 65 YEARS AND OVER IN PERMANENT AND TEMPORARY HOUSING UNITS IN EACH PROVINCE, COUNTY AND COUNTY BOROUGH DISTINGUISHING THE NUMBER AND PERCENTAGE LIVING ALONE	7
5B.	PERSONS, MALES AND FEMALES AGED 70 YEARS AND OVER IN PERMANENT AND TEMPORARY HOUSING UNITS IN EACH PROVINCE, COUNTY AND COUNTY BOROUGH DISTINGUISHING THE NUMBER AND PERCENTAGE LIVING ALONE	8
6.	AVERAGE NUMBER OF PERSONS PER PRIVATE HOUSEHOLD IN PERMANENT HOUSING UNITS IN EACH PROVINCE, COUNTY AND COUNTY BOROUGH - 1936 TO 1979	9
7.	PRIVATE HOUSEHOLDS IN PERMANENT HOUSING UNITS CLASSIFIED BY TYPE AND NUMBER OF PERSONS IN THE HOUSEHOLD	10
8.	PRIVATE HOUSEHOLDS IN PERMANENT HOUSING UNITS IN EACH PROVINCE, COUNTY AND COUNTY BOROUGH CLASSIFIED BY NUMBER OF PERSONS IN THE HOUSEHOLD	11
9.	PRIVATE HOUSEHOLDS IN PERMANENT HOUSING UNITS IN EACH PROVINCE, COUNTY AND COUNTY BOROUGH CLASSIFIED BY TYPE AND NUMBER OF PERSONS	12
10.	PRIVATE HOUSEHOLDS IN PERMANENT HOUSING UNITS CLASSIFIED BY TYPE AND NUMBER OF PERSONS AND BY SEX AND AGE GROUP OF HEAD OF HOUSEHOLD	22
11A.	PRIVATE HOUSEHOLDS IN PERMANENT HOUSING UNITS HAVING MALE HEADS CLASSIFIED BY TYPE AND NUMBER OF PERSONS AND BY AGE GROUP OF MALE HEAD OF HOUSEHOLD	24
11B.	PRIVATE HOUSEHOLDS IN PERMANENT HOUSING UNITS HAVING FEMALE HEADS CLASSIFIED BY TYPE AND NUMBER OF PERSONS AND BY AGE GROUP OF FEMALE HEAD OF HOUSEHOLD	26
12.	PRIVATE HOUSEHOLDS IN PERMANENT HOUSING UNITS CLASSIFIED BY TYPE AND NUMBER OF PERSONS AND BY SEX AND MARITAL STATUS OF HEAD OF HOUSEHOLD	28
13A.	PRIVATE HOUSEHOLDS IN PERMANENT HOUSING UNITS CLASSIFIED BY TYPE AND NUMBER OF PERSONS AND BY NUMBER OF CHILDREN UNDER 5 YEARS OF AGE IN THE HOUSEHOLD	30
13B.	PRIVATE HOUSEHOLDS IN PERMANENT HOUSING UNITS CLASSIFIED BY TYPE AND NUMBER OF PERSONS AND BY NUMBER OF CHILDREN UNDER 15 YEARS OF AGE IN THE HOUSEHOLD	32
14.	PRIVATE HOUSEHOLDS IN PERMANENT HOUSING UNITS CLASSIFIED BY TYPE AND NUMBER OF PERSONS AGED 65 YEARS AND OVER IN THE HOUSEHOLD	34

TABLES CONTD.

	Page
15. PRIVATE HOUSEHOLDS, NUMBER OF PERSONS, NUMBER OF CHILDREN UNDER 5, NUMBER OF CHILDREN UNDER 15 AND NUMBER OF PERSONS AGED 65 AND OVER IN TEMPORARY HOUSING UNITS CLASSIFIED BY TYPE AND NUMBER OF PERSONS	36
16A. PRIVATE HOUSEHOLDS IN TEMPORARY HOUSING UNITS IN EACH PROVINCE, COUNTY AND COUNTY BOROUGH CLASSIFIED BY TYPE	38
16B. PERSONS IN PRIVATE HOUSHOLDS IN TEMPORARY HOUSING UNITS IN EACH PROVINCE, COUNTY AND COUNTY BOROUGH CLASSIFIED BY TYPE	39

PART 2

1. POPULATION IN PRIVATE HOUSEHOLDS, DISTINGUISHING FAMILY AND NON-FAMILY HOUSEHOLDS, CLASSIFIED BY POSITION IN FAMILY UNIT AND BY AGE, SEX AND MARITAL STATUS: AND POPULATION IN NON-PRIVATE HOUSEHOLDS CLASSIFIED BY AGE, SEX AND MARITAL STATUS	42
1A. PERSONS, RETURNED IN THE MARITAL STATUS CATEGORY "OTHER STATUS", INCLUDED WITH MARRIED PERSONS IN TABLE I	48
2. FAMILY UNITS IN PRIVATE HOUSEHOLDS CLASSIFIED BY TYPE AND NUMBER OF CHILDREN	49
3. FAMILY UNITS IN PRIVATE HOUSEHOLDS CLASSIFIED BY TYPE AND SIZE OF HOUSEHOLD AND BY TYPE AND SIZE OF FAMILY UNIT	50

CENSUS OF POPULATION 1979

INTRODUCTION

A Census of Population was taken on the night of 1 April 1979 in accordance with the Statistics (Census of Population) Order, 1979. (S.I. No. 55 of 1979) made by the Taoiseach in pursuance of powers conferred on him by Sub-Section (1) of Section 16 of the Statistics Act, 1926 and the Statistics Acts, 1926 and 1946 (Transfer of Ministerial Functions) Order, 1949 (S.I. No. 142 of 1949).

The following particulars were collected in respect of each individual - (i) Name, (ii) Sex, (iii) Relationship to Head of Household, (iv) Date of Birth, (v) Marital Status and (vi) change of residence from outside the State during the twelve months preceding the Census date.

COVERAGE OF THE CENSUS

The Census population figures relate to the de facto population, that is to say the population recorded for each household represents the total of all persons present on the night of Sunday, 1 April, 1979, together with all persons who arrived in that household on the morning of Monday, 2 April, 1979, not having been enumerated elsewhere. The figures, therefore, for an individual household include visitors present on Census night as well as residents, while persons temporarily absent from the household are excluded.

This volume†, the last in the series of the 1979 Census Reports, contains details of households classified by type and size of households and of family units.

†Publications already issued include a preliminary report "Census of Population 1979 - Preliminary Report (Prl. 8306)", Volume 1 containing final population figures for detailed units of area - "Census of Population 1979 - Volume 1 - Population of District Electoral Divisions, Towns and larger units of area (Prl. 8692)"; a bulletin "Census of Population 1979 - Bulletin No. 1 - Classification by age groups, sex and marital status for the State, Counties and County Boroughs (Prl. 9402)" which contained some of the more important results presented in Volume II and Volume II containing detailed results involving classifications of the population by age, sex and marital status - Census of Population 1979 - Volume II - ages and marital status classified by Areas (Prl. 9956).

CENSUS OF POPULATION 1979

VOLUME III

EXPLANATORY NOTES

The volume is in two parts; Part I contains the details of household composition similar to those for earlier Censuses, and in Part II information in respect of family units is introduced in experimental form. Particular attention is directed to the relevant definitions and explanatory notes and qualifications below.

DEFINITIONS

A *private household* is defined as a group of persons living together (usually but not necessarily related), jointly occupying the whole or part of a private dwelling house, flat or temporary dwelling and sharing a common budget. A person who lives alone or a person who occupies only part of the living accommodation but does not normally share a common budget with the other occupants is also regarded as constituting a separate private household. A *non-private household* is a boarding house, hotel, guest house, barrack, hospital, nursing home, boarding school, religious institution, welfare institution, prison or ship, etc. However, proprietors and managers of hotels, principals of boarding schools, persons in charge of various other types of institutions and members of staff who, with their families, occupy flats on the premises are classified as private households.

Households occupying caravans or other temporary dwellings are classified as private households but most of the tabulations concerning private households have been compiled for *private households in permanent housing units* and, therefore, exclude all such temporary dwellings. Thus the data are directly comparable with those for private households in the corresponding reports for previous censuses.

The *number of persons* in a household consists of the total number of persons present there on the night of Sunday, 1 April, 1979, together with all persons who arrived in the household on the morning of Monday, 2 April, 1979, not having been enumerated elsewhere. The size and composition of a household, therefore, include any visitors present in the household on Census night, but do not include any usual residents of the household temporarily absent on Census night.

A *family unit* or nucleus is defined as (i) a man and his wife (ii) a man and his wife together with one or more single children (of any age) or (iii) one parent together with one or more single children (of any age). Size and composition of a family unit also reflect the persons present on Census night.

CLASSIFICATION OF HOUSEHOLDS BY TYPE

The classification used for private households is the same as that used at the 1971 Census of Population.

The family unit forms the basis of this classification. Households containing family units are further classified into those with and those without other persons. Households containing more than one family unit are also separately distinguished as are one person households. Household size and composition relate only to the persons present in the household on Census night.

The ten types of household used in the classification are:-
Households consisting of:-

- | | | |
|---|---|-----------------------|
| 1. One person only | } | with no other persons |
| 2. Man and wife | | |
| 3. Man, wife and one or more single children (of any age) | | |
| 4. One parent and one or more single children (of any age) | | |
| 5. Man and wife | } | with other persons |
| 6. Man, wife and one or more single children (of any age) | | |
| 7. One parent and one or more single children (of any age) | | |
| 8. Two family units with or without other persons | | |
| 9. Three or more family units with or without other persons | | |
| 10. Two or more persons but not including a family unit | | |

It should be particularly noted that the age of children is not taken into account in defining the household type. For example, a household comprised of a man and his wife and their child aged 10 years is assigned to Type 3 as is a household comprised of a man and his wife and their son aged 30, if the son is unmarried.

In some of the tables, households are classified by various characteristics of the head of the household such as age and marital status. No instruction was given on the Census form as to which person in a household should be regarded as the head. It was indicated that particulars relating to the head of household should be entered on the first line of the form and therefore, the person completing the household schedule indicates in this manner who was regarded by the household as the head.

With regard to the marital status classifications, the marital status returns in the Census were sought on the basis of "present legal status" with provision for four categories - "single", "married", "widowed" and "other status". Some 5,334 heads of households (1,528 males and 3,806 females) returned themselves as "other status". These have been included with the "married" categories in the relevant tables.

Identification of family units is based on the information returned on the Census form with particular emphasis placed on the response to the "Relationship to Head of Household" question. While in general the information is sufficient to enable family units to be properly distinguished, there are two particular circumstances in which it is not adequate.

Firstly, there are problems in identifying unmarried parents with children as separate family units. This happens particularly where one unmarried parent with one or more children lives with his/her parents and the relationship to head of household information does not identify, beyond doubt, the parent/child relationship. In such cases, the unmarried parent and children are subsumed in another family unit. As a result the number of family units identified as consisting of unmarried parents with children is probably underestimated.

Secondly, there is the position of couples who, although not married, live together as man and wife. Where it is clear from the Census form that this relationship existed, a couple together with their children, if any, are classed as a family unit. Otherwise, they are classed as other persons who may or may not be attached to another identifiable family unit.

Finally there are the effects on the composition, size and type of family units of temporary absences from or visitors to households on Census night. In particular the temporary absence of one parent from a household on Census night (e.g. in hospital, absent on business or holiday, etc.) reduces a two-parent unit to a one-parent unit. To the extent that this has occurred, the number of one-parent family units is overstated at the expense of two-parent units. On the other hand the presence of visitors in households on Census night may have the effect of creating a second family unit in what is normally a one-family household or of attaching other persons to the usually resident family unit.

CLASSIFICATION OF FAMILY UNITS

While the presence or absence of a family unit has been used in this and previous Censuses as the basis for classifying households by type (see above), this is the first Census for which the population in family units and the number of such units by type of unit have been compiled. The qualifications just mentioned apply to family units as well as household types. The format of presentation adopted in Part II is experimental.

COMMENTARY

PART 1 - HOUSEHOLD COMPOSITION

Of the 3,368,217 persons enumerated at the 1979 Census, 3,229,740 were in private households in permanent housing units; 111,206 were in institutions while 27,271 were in temporary or mobile homes. There were in all 867,026 private households in permanent housing units and these are the subject of most of the tables in Part I of this report.

PERMANENT HOUSING UNITS

While the total number of households rose from 726,363 in 1971 to 867,026 in 1979 (an increase of 19.4 per cent), there were large variations within particular household types. The numbers of each type of household in 1966, 1971 and 1979 and the percentage changes between 1966 and 1971 and between 1971 and 1979 (actual and on a five year basis to facilitate comparisons with the 1966 - 71 percentage changes) are shown in Table A.

TABLE A: PRIVATE HOUSEHOLDS IN PERMANENT HOUSING UNITS CLASSIFIED BY TYPE 1966, 1971 AND 1979 AND PERCENTAGE CHANGE IN EACH CATEGORY

Type of Household	Total Households			Change 1971-79		Percentage Change	
	1966	1971	1979	Actual	Percentage	1966-71 (per cent)	1971-79* (per cent)
One Person	88,989	102,787	142,193	+ 39,406	+ 38.3	+ 15.5	+ 22.5
Man and Wife	62,153	72,479	96,001	+ 23,522	+ 32.5	+ 16.6	+ 19.2
Man, Wife and one or more children (of any age)	266,891	291,440	381,240	+ 89,800	+ 30.8	+ 9.2	+ 18.3
One Parent and one or more children (of any age)	68,191	63,897	68,956	+ 5,059	+ 7.9	- 6.3	+ 4.9
Man and Wife with other persons	19,018	18,610	14,835	- 3,775	- 20.3	- 2.1	- 13.2
Man, Wife and one or more children (of any age) with other persons	69,475	68,496	60,850	- 7,646	- 11.2	- 1.4	- 7.2
One Parent and one or more children (of any age) with other persons	19,469	17,195	14,137	- 3,058	- 17.8	- 11.7	- 11.5
Two family units with or without other persons	24,134	24,727	21,269	- 3,458	- 14.0	+ 2.5	- 9.0
Three or more family units with or without other persons	448	476	430	- 46	- 9.7	+ 6.3	- 6.2
Two or more persons but not including a family unit	68,536	66,256	67,115	+ 859	+ 1.3	- 3.3	+ 0.8
Total	687,304	726,363	867,026	+ 140,663	+ 19.4	+ 5.7	+ 11.7

*To facilitate comparison with the 1966-71 period the percentage changes over the 1971-79 period shown in the final column of the table have been converted to a five year basis.

It can be seen from the table that "One Person Households" showed the largest increase (i.e. + 38.3 per cent) between 1971 and 1979. There were also large increases in the "Man and Wife" (+ 32.5 per cent) and in the "Man, Wife and one or more Children" (+ 30.8 per cent) types of households. The households which showed the largest decreases were the "Man and Wife with other persons" (- 20.3 per cent) and the "One parent and one or more Children (of any age) with other persons" (-17.8 per cent).

Table B classifies one-person households (i.e. those households which showed the greatest increase between 1971 and 1979) by age and sex of person in the household and shows the percentage changes between 1971 and 1979.

TABLE B: ONE-PERSON HOUSEHOLDS IN PERMANENT HOUSING UNITS CLASSIFIED BY AGE AND SEX OF HOUSEHOLD MEMBER, 1971 AND 1979, WITH PERCENTAGE CHANGE IN EACH CATEGORY

Age Group	MALES			FEMALES		
	1971	1979	percentage change	1971	1979	percentage change
Under 25	1,779	4,186	+ 135.3	2,062	4,706	+ 128.2
25 - 29	1,787	4,546	+ 154.4	1,243	3,320	+ 167.1
30 - 34	1,801	3,830	+ 112.7	938	2,206	+ 135.2
35 - 39	2,404	3,347	+ 39.2	1,063	1,826	+ 71.8
40 - 44	3,606	4,203	+ 16.6	1,633	1,895	+ 16.0
45 - 49	5,000	5,379	+ 7.6	2,258	2,744	+ 21.5
50 - 54	6,014	6,807	+ 13.2	3,458	3,863	+ 11.7
55 - 59	6,725	7,627	+ 13.4	4,972	5,866	+ 18.0
60 - 64	6,289	7,503	+ 19.3	6,646	8,216	+ 23.6
65 - 69	5,895	7,892	+ 33.9	7,958	11,984	+ 50.6
70 - 74	5,280	6,293	+ 19.2	8,936	11,655	+ 30.4
75 and over	5,587	7,077	+ 26.7	9,453	15,222	+ 61.0
Total	52,167	68,690	+ 31.7	50,620	73,503	+ 45.2

There have been large increases in the numbers of one-person households for all age groups, with those for both males and females in the age groups under 25, 25-29 and 30-34 respectively more than doubling between 1971 and 1979. It may also be noted that the number of persons aged 65 years and over living alone has risen appreciably; they numbered 60,123 in 1979 compared to 43,109 in 1971, a rise of some 17,000 or 40 per cent. Overall, some 17 per cent of persons aged 65 years and over were living alone in 1979; one in five of females in this age group were in this position.

Table C classifies households by size (i.e. number of persons in the household) for the years 1966, 1971 and 1979.

TABLE C: PRIVATE HOUSEHOLDS IN PERMANENT HOUSING UNITS AND PERCENTAGE CHANGE IN EACH CATEGORY CLASSIFIED BY HOUSEHOLD SIZE 1966, 1971 AND 1979

Number of persons in household	Total Private Households			Change 1971 - 79		Percentage Change	
	1966	1971	1979	Actual	Percentage	1966-71 (per cent)	1971-79* (per cent)
1	88,989	102,787	142,193	+ 39,406	+ 38.3	+ 15.5	+ 22.5
2	139,541	149,467	176,664	+ 27,197	+ 18.2	+ 7.1	+ 11.0
3	114,436	115,781	131,093	+ 15,312	+ 13.2	+ 1.2	+ 8.1
4	97,058	102,195	132,063	+ 29,868	+ 29.2	+ 5.3	+ 17.4
5	79,320	84,035	108,596	+ 24,561	+ 29.2	+ 5.9	+ 17.4
6	61,068	64,971	77,318	+ 12,347	+ 19.0	+ 6.4	+ 11.5
7	42,512	43,714	45,871	+ 2,157	+ 4.9	+ 2.8	+ 3.0
8	27,098	27,022	25,515	- 1,507	- 5.6	- 0.3	- 3.5
9	16,550	16,118	13,411	- 2,707	- 16.8	- 2.6	- 10.9
10	10,230	10,346	7,488	- 2,858	- 27.6	+ 1.1	- 18.3
11	4,898	4,401	3,225	- 1,176	- 26.7	- 10.1	- 17.7
12 or more	5,604	5,526	3,589	- 1,937	- 35.1	- 1.4	- 23.7
Total	687,304	726,363	867,026	+ 140,663	+ 19.4	+ 5.7	+ 11.7

**To facilitate comparisons with the 1966-71 period, the percentage changes over the 1971-79 period shown in the final column of the table have been converted to a five year basis.*

Between 1971 and 1979 households with 1 member only showed the largest increase (+ 38.3 per cent) of all types of households. There were also very high increases in the numbers of households with 4 or 5 members (+ 29.2 per cent respectively). In contrast, however, it may be noted that the numbers of households with 9 or more members decreased sharply. In particular the numbers of households with 12 or more members decreased by 35.1 per cent in the period 1971-79.

Table D shows for 1979 the number of private households in permanent housing units classified by type and by sex and age group of the head of the household.

TABLE D: PRIVATE HOUSEHOLDS IN PERMANENT HOUSING UNITS CLASSIFIED BY TYPE AND BY SEX AND AGE GROUP OF HEAD OF HOUSEHOLD IN 1979

Type of Household	Total	Male Head				Female Head			
		Age Group				Age Group			
		under 25	25-44	45-64	65 and over	under 25	25-44	45-64	65 and over
One Person	142,193	4,186	15,926	27,316	21,262	4,706	9,247	20,689	38,861
Man and Wife	96,001	6,211	25,447	26,481	35,496	413	913	589	451
Man, Wife and one or more children (of any age)	381,240	10,415	197,411	134,794	32,198	443	4,155	1,565	259
One Parent and one or more children (of any age)	68,956	42	1,698	5,784	6,842	480	7,754	23,289	23,067
Man and Wife with other persons	14,835	302	2,537	4,750	5,085	56	171	755	1,179
Man, Wife and one or more children (of any age) with other persons	60,850	635	24,285	23,364	6,959	64	567	1,709	3,267
One Parent and one or more children (of any age) with other persons	14,137	45	669	1,418	1,355	132	1,551	4,842	4,125
Two family units with or without other persons	21,269	182	4,448	7,175	5,987	43	334	1,864	1,236
Three or more family units with or without other persons	430	4	44	210	94	1	4	56	17
Two or more persons but not including a family unit	67,115	3,763	6,611	14,523	11,107	5,938	4,537	8,077	12,559
Total	867,026	25,785	279,076	245,815	126,385	12,276	29,233	63,435	85,021

The largest number of households was of the "Man, Wife and one or more children (of any age)" type. This type accounted for 381,240 or some 44 per cent of all private households and in turn, had predominantly male heads in the age-groups 25-44 and 45-64. The "One Person" household was the next most frequent type. In the case of males, those in the age-group 45-64 predominated in these households whereas for females, those aged 65 years and over accounted for more than one-half of the total.

NOTE: In general for households of two or more persons, the tabulations relating to head of household are based on the characteristics of the person entered on the first line of the Census form. Inadvertently this procedure was not always followed in processing the 1979 Census because of the simultaneous preparation of the new tables analysing family units (see Part II). In these instances a parent was taken as head of the household although not entered on the first line of the Census form. It is estimated that the number of households in question was about 1 per cent of all households. The main effect is to decrease the number of households with unmarried heads (principally males in the younger age groups) and to increase the number in other categories (mainly widowed females in the older age groups). This affects in particular the headship analysis of households comprised of one parent and one or more children.

TEMPORARY HOUSING UNITS

Table E sets out the number of private households in temporary housing units classified by type of household together with the numbers of persons in various groups in these households.

TABLE E: PRIVATE HOUSEHOLDS AND NUMBER OF PERSONS, CHILDREN UNDER 5 YEARS OF AGE, CHILDREN UNDER 15 YEARS OF AGE AND PERSONS AGED 65 YEARS AND OVER IN TEMPORARY HOUSING UNITS CLASSIFIED BY TYPE

Type of Household	Total Households	Total Persons	Children under 5 years of age	Children under 15 years of age	Persons aged 65 years and over
One Person	2,789	2,789	-	-	1,204
Man and Wife with or without children (of any age)	5,740	20,647	5,040	8,294	407
Man and Wife with or without children (of any age) with other persons	192	1,012	153	344	78
One parent and one or more children (of any age) with or without other persons	474	1,512	238	612	112
Other households	438	1,311	36	101	418
Total	9,633	27,271	5,467	9,351	2,219

There were 9,633 such households with 27,271 persons in 1979; this compares with 4,180 households containing 14,765 persons in 1971. The largest single type was that of "Man and Wife with or without children" accounting for 5,740 households and 20,647 persons. Children under 15 years of age accounted for 8,294 of these persons. One person households in temporary housing units numbered 2,789 and contained 1,204 persons aged 65 years and over out of the total of 2,219 such persons.

PART II - FAMILY UNITS

In the previous section the analysis was based on household type defined on the basis of the presence or absence on Census night of an identifiable family unit. In this section further analysis is carried out on the basis of these family units and their composition.

The total number of family units (as defined) was 686,347. Households containing family units accounted for 2,942,778 persons; a further 314,233 persons were in private households not containing an identifiable family unit and the remainder of the population, 111,206 persons, were in non-private households.

The total number of family units relates to the number in private households (in permanent and temporary housing units) as set out in Table F following

TABLE F: NUMBER OF HOUSEHOLDS, NUMBER OF FAMILY UNITS AND NUMBER OF PERSONS CLASSIFIED BY TYPE OF HOUSEHOLD

Type of Household	Number of Households	Number of Identified Family Units	Number of Persons
Single family unit	642,425	642,425	2,798,239
Two family units	21,304	42,608	140,473
Three or more family units	430	1,314	4,066
Total with a family unit	664,159	686,347	2,942,778
One person households	144,982	-	144,982
Two or more persons but no family unit	67,518	-	169,251
Total in Private Households (of which in Temporary Housing Units)	876,659 (9,633)	686,347 (6,476)	3,257,011 (27,271)

The following Table G summarises the composition of family households using broad age groupings. A detailed presentation by five year age groups, including a classification by marital status, is given in the detailed Table 1 in Part II of the volume. As already mentioned there are important qualifications arising from the Census procedures and definitions which must be borne in mind in interpreting the figures. Because actual location on Census night is the basis of the count, if a spouse is absent temporarily on that night (e.g. in hospital etc.) the classification is affected. Thus, if one or more children (unmarried) are present the family unit becomes "one parent" type while if there are no children (unmarried) present there will be no family unit. This inflates somewhat the numbers of one parent family units and one person households. On the other hand the Census information does not usually enable identification of a family unit of one unmarried parent with a child especially if living with other persons.

In defining family units (and households) "with children" it will be recalled that unmarried children of any age are in question.

Table G shows that of the 593,764 family units with husband and wife present, 466,451 or nearly 79 per cent had children. Most of the parents involved were under 55 years of age. For couples with no children present on Census night the majority were over 55 years of age.

There were 92,583 family units with one parent present on Census night, in most cases the mother - usually a widow.

Family units with both parents present covered 1,366,620 children (as defined) and almost 70 per cent of these were under 15 years of age with a further 26 per cent being under 25 years of age. For family units with only one parent present there were 186,846 children (as defined) with only 29 per cent under 15 years with a further 36 per cent under 25 years but an almost equal number over 25 years of age. Apart from parents and children there were a further 109,201 persons covered in the family households. Some 60,516 of these were 55 years or more, the majority (63 per cent) being widowed persons.

In the detailed Table 1 the married category includes those returned under "other status". An additional table, Table 1A has been included classifying such persons on the same lines as in Table 1.

There are two further tables in Part II of the volume concerning family units. Table 2 shows the family units classified by number of children (as defined) in the family unit. In this table there is also shown separate figures for family units where all children are under 15 years of age and where all children are aged 15 or over.

The second table, Table 3, shows a relationship between the size of the family unit and the size of the household in which the unit is located.

**TABLE G: POPULATION IN FAMILY HOUSEHOLDS DISTINGUISHING MALES AND FEMALES
CLASSIFIED BY POSITION IN FAMILY UNIT AND BY BROAD AGE GROUP**

Position in Family Unit and Broad Age Group	Persons	Males	Females
Husbands and Wives - Total	1,187,528	593,764	593,764
Under 55 years - with children	753,574	357,074	396,500
- no children	117,122	55,287	61,835
Aged 55 years or more - with children	179,328	109,377	69,951
- no children	137,504	72,026	65,478
One Parent - Total	92,583	19,291	73,292
Under 55 years	32,133	5,963	26,170
55 years or more	60,450	13,328	47,122
Children (single of any age) with both parents - Total	1,366,620	721,521	645,099
Under 15 years of age	950,360	486,052	464,308
15 and under 25	355,133	194,167	160,966
25 years or more	61,127	41,302	19,825
Children (single of any age) with one parent - Total	186,846	109,011	77,835
Under 15 years of age	53,770	27,383	26,387
15 and under 25	66,879	37,503	29,376
25 years or more	66,197	44,125	22,072
Other Persons in family households - Total	109,201	47,122	62,079
Under 15 years of age	9,044	4,380	4,664
15 and under 25	18,358	8,984	9,374
25 and under 55	21,283	12,556	8,727
55 years or more	60,516	21,202	39,314
Population in Family Households -	2,942,778	1,490,709	1,452,069

CONTENT OF THE TABLES

PART I

Table 1 shows the number of persons in private and non-private households separately in each County in the State.

The remaining tables in Part I fall into three groups. Tables 2 - 5B relate to **all private households** (i.e. private households in both permanent and temporary dwellings). Tables 6 - 14 relate to private households in **permanent dwellings only** while tables 15, 16A and 16B relate to private households in **temporary dwellings only**.

Table 2 gives the number of private households classified by type of household and number of persons in the household.

Table 3 shows private households and members of private households classified by number and broad age group of occupants. This is a new table and is intended to complement the usual "type of household" classification by way of an alternative classification of households based on number and age structure of occupants.

Table 4 gives the number of private households and persons therein classified by the sex, age and marital status of the heads of the households.

Tables 5A and 5B show the numbers and percentages of people aged 65 years and over and 70 years and over, respectively, living alone in each County in the State.

Table 6 gives the average number of persons per private household in permanent housing units in each County with comparisons for earlier years.

Table 7 gives the number of private households in permanent housing units classified by type of household and number of persons in the household. **Table 8** gives the number of private households of different sizes in each County in the State while **Table 9** gives a detailed breakdown of numbers of households in each County classified by both type and size of household.

Tables 10 to 14 give the number of private households in permanent housing units classified by type and size of household and by some other characteristic of the household such as age and sex of the head of the household or number of children under 15 in the household etc.

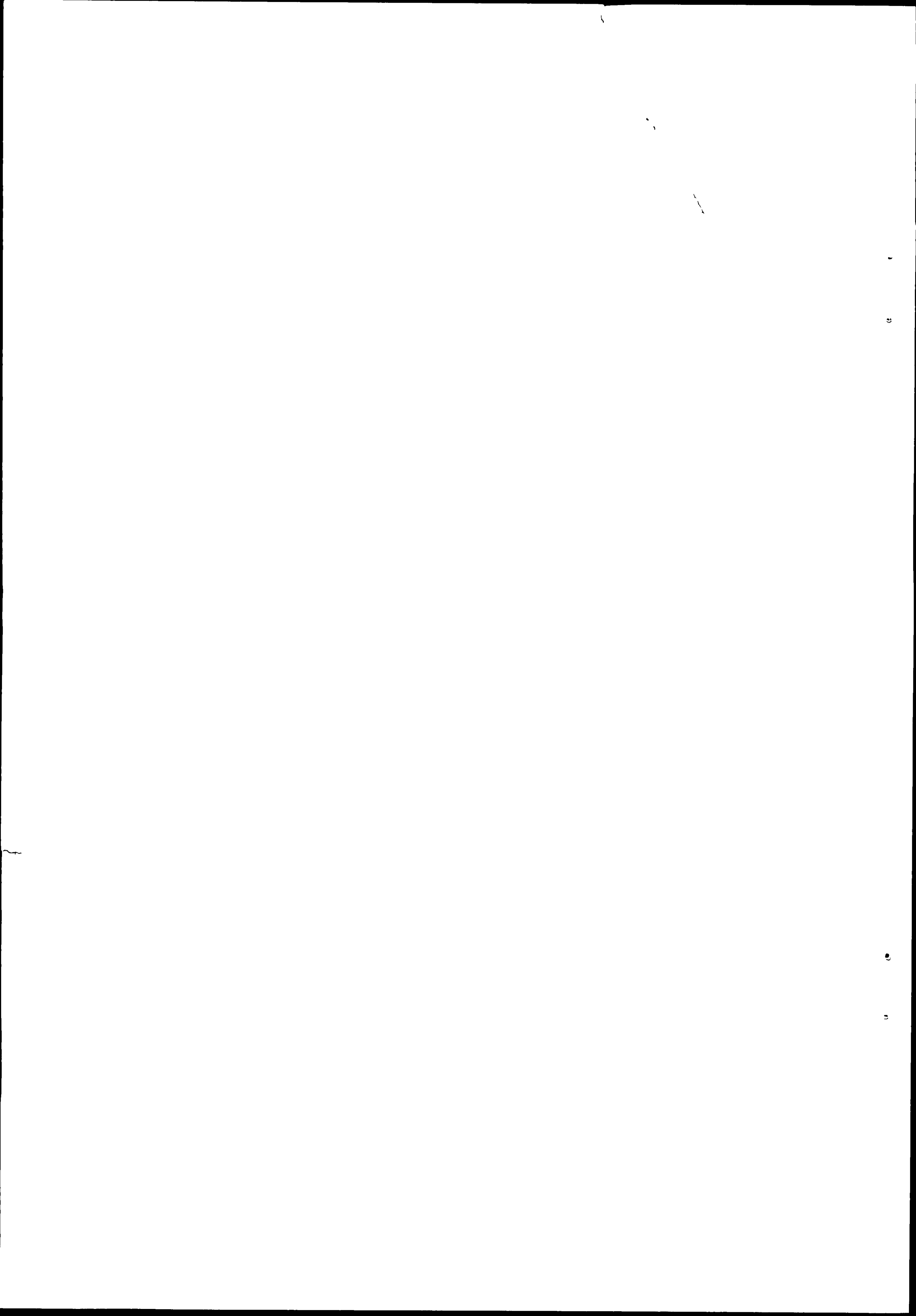
Tables 15, 16A and 16B relate to private households in temporary housing units and are similar to other tables produced for private households in permanent housing units.

PART II

Table 1 gives a breakdown of the entire population in both private and non-private households by age, sex and marital status and by position in household (e.g. husbands and wives, children, lone parents etc.).

Table 1A gives a similar breakdown to **Table 1** of those persons who were classified in the marital status category "Other Status" in the Census.

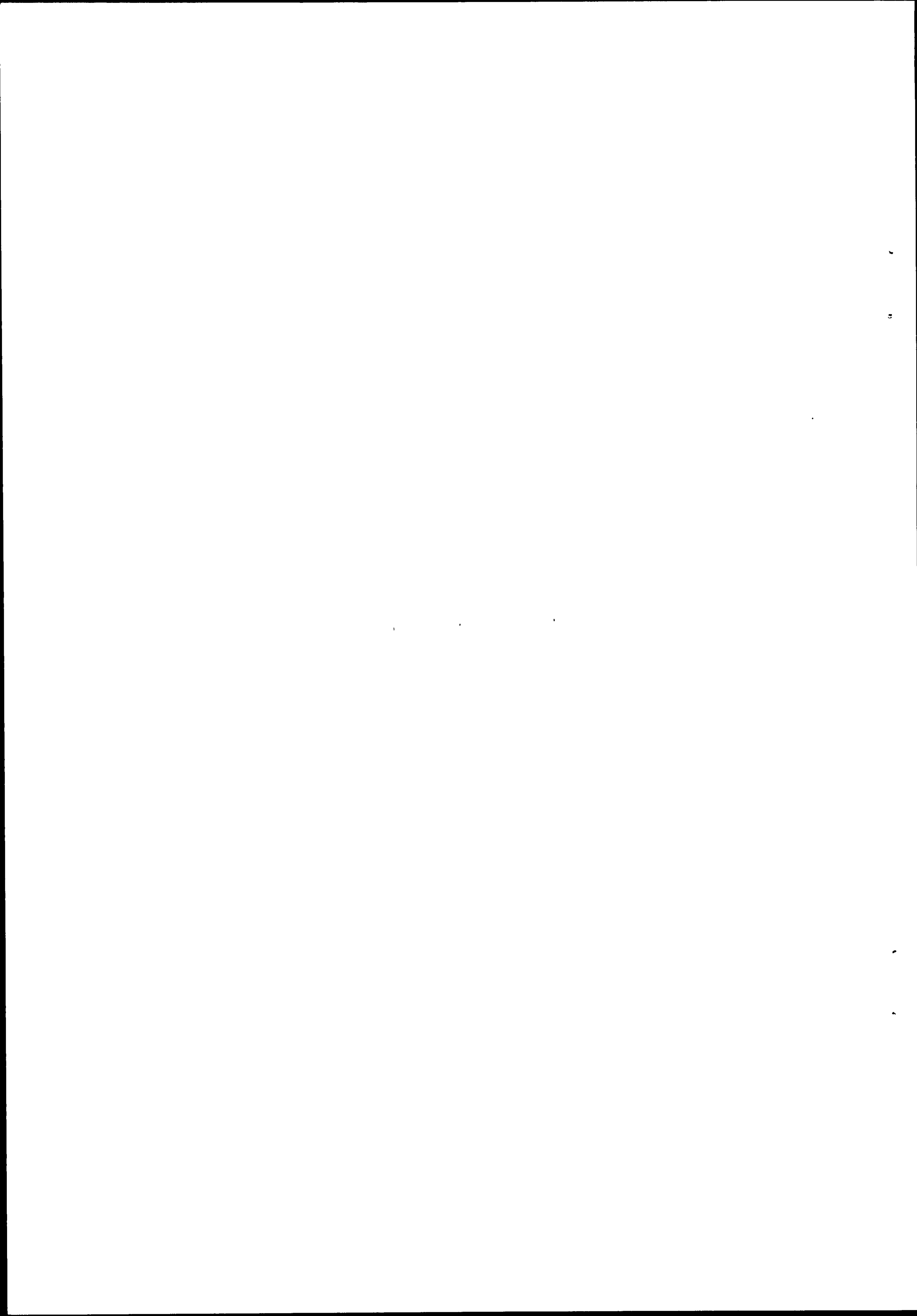
Tables 2 and 3 refer to **family units** as opposed to households. **Table 2** shows the number of family units classified by type and number of children in the unit. **Table 3** gives a breakdown of the number of family units by type and size of family unit and by type and size of household in which they were enumerated.



TABLES

Part I

HOUSEHOLD COMPOSITION



COVERAGE OF TABLES

Tables 1 to 5B Part I, relate to All Private Households (i.e. Private Households in both Permanent and Temporary Dwellings).

Tables 6 to 14 Part I, relate to Private Households in Permanent Dwellings only.

Tables 15 to 16B Part I, relate to Private Households in Temporary Dwellings only.

Tables 1 to 3 Part II, relate to All Private Households (i.e. Private Households in both Permanent and Temporary Dwellings).

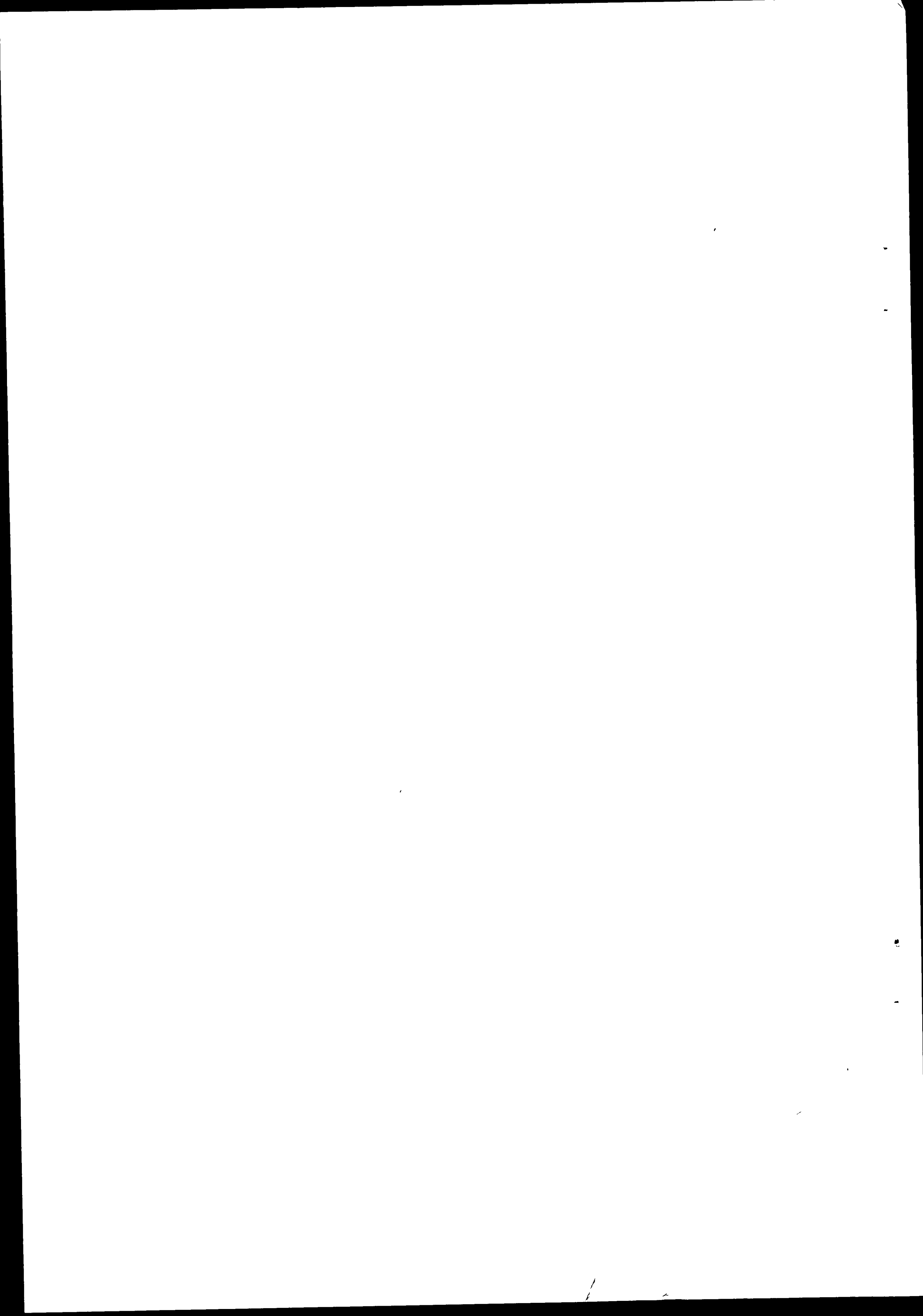


TABLE 1:- NUMBER OF PERSONS IN PRIVATE AND NON-PRIVATE HOUSEHOLDS IN EACH PROVINCE,
COUNTY AND COUNTY BOROUGH.

Province, County or County Borough	Total Population	Persons in private households		Persons not in private households
		in permanent housing units	in temporary housing units	
Total	3,368,217	3,229,740	27,271	111,206
Leinster	1,743,861	1,673,023	12,910	57,928
Carlow	38,668	37,257	487	924
Dublin City and County	983,683	945,130	3,952	34,601
<i>Dublin County Borough</i>	544,586	520,251	1,169	23,166
<i>Dun Laoghaire Borough</i>	54,244	51,496	60	2,688
<i>Dublin</i>	384,853	373,383	2,723	8,747
Kildare	97,185	92,166	1,637	3,382
Kilkenny	69,156	65,839	780	2,537
Laoighis	49,936	47,418	525	1,993
Longford	30,785	29,441	370	974
Louth	86,135	82,785	639	2,711
Meath	90,715	87,700	883	2,132
Offaly	57,342	55,206	689	1,447
Westmeath	59,885	56,561	615	2,709
Wexford	96,421	92,291	1,503	2,627
Wicklow	83,950	81,229	830	1,891
Munster	979,819	940,029	6,193	33,597
Clare	84,919	82,009	375	2,535
Cork City and County	396,118	381,660	1,853	12,605
<i>Cork County Borough</i>	138,267	131,473	115	6,679
<i>Cork</i>	257,851	250,187	1,738	5,926
Kerry	120,356	115,717	993	3,646
Limerick City and County	157,407	149,925	1,266	6,216
<i>Limerick County Borough</i>	60,665	57,054	121	3,490
<i>Limerick</i>	96,742	92,871	1,145	2,726
Tipperary N.R.	58,476	56,099	597	1,780
Tipperary S.R.	75,265	71,733	610	2,922
Waterford City and County	87,278	82,886	499	3,893
<i>Waterford County Borough</i>	32,617	30,420	14	2,183
<i>Waterford</i>	54,661	52,466	485	1,710
Connacht	418,500	399,552	4,822	14,126
Galway	167,838	158,476	2,227	7,135
Leitrim	27,844	26,990	347	507
Mayo	114,019	109,987	1,184	2,848
Roscommon	54,189	52,612	601	976
Sligo	54,610	51,487	463	2,660
Ulster (part of)	226,037	217,136	3,346	5,555
Cavan	53,720	52,015	500	1,205
Donegal	121,941	116,621	2,509	2,811
Monaghan	50,376	48,500	337	1,539

TABLE 2:- PRIVATE HOUSEHOLDS IN PERMANENT AND TEMPORARY HOUSING UNITS CLASSIFIED BY TYPE AND NUMBER OF PERSONS IN THE HOUSEHOLD.

Type of household	Total households	Number of persons in household											
		1	2	3	4	5	6	7	8	9	10	11	12 or more
One person	144,982	144,982	-	-	-	-	-	-	-	-	-	-	-
Man and wife	97,828	-	97,828	-	-	-	-	-	-	-	-	-	-
Man, wife and one or more children (of any age)	385,153	-	-	83,946	100,733	81,461	55,210	30,615	16,186	8,198	4,599	2,046	2,159
One parent and one or more children (of any age)	69,370	-	33,794	17,171	8,770	4,744	2,377	1,263	611	334	171	81	54
Man and wife with other persons	14,887	-	-	12,621	1,760	360	97	29	7	6	2	2	3
Man, wife and one or more children (of any age) with other persons	60,990	-	-	-	11,209	14,884	13,380	9,520	5,764	3,126	1,638	691	788
One parent and one or more children (of any age) with other persons	14,197	-	-	5,571	3,908	2,225	1,247	631	319	131	98	31	36
Two family units with or without other persons	21,304	-	-	-	2,776	4,115	4,798	3,736	2,577	1,566	945	351	440
Three or more family units with or without other persons	430	-	-	-	-	-	26	75	80	72	67	43	67
Two or more persons but not including a family unit	67,518	-	47,403	13,706	4,143	1,343	472	162	85	41	31	15	117
Total	876,659	144,982	179,025	133,015	133,299	109,132	77,607	46,031	25,629	13,474	7,541	3,260	3,664

TABLE 3:- PRIVATE HOUSEHOLDS IN PERMANENT AND TEMPORARY HOUSING UNITS AND MEMBERS OF PRIVATE HOUSEHOLDS CLASSIFIED BY NUMBER AND BROAD AGE GROUP OF OCCUPANTS

Number and Broad Age Group of Occupants	No. of Households	No. of Members
One person aged 15 to 64 years	83,655	83,655
One person aged 65 years or over	61,327	61,327
Two persons both aged 15 to 64 years	94,447	188,894
Two persons both aged 15 or over, at least one of whom is aged 65 years or over	81,357	162,714
One male aged 15 or over with one or more persons aged 0 to 14 years	1,806	6,053
One female aged 15 or over with one or more persons aged 0 to 14 years	6,673	22,252
Two persons aged 15 or over with one person aged 0 to 14 years	52,156	156,468
Two persons aged 15 or over with two persons aged 0 to 14 years	69,807	279,228
Two persons aged 15 or over with three persons aged 0 to 14 years	52,420	262,100
Two persons aged 15 or over with four persons or more aged 0 to 14 years	51,259	343,025
Three persons aged 15 or over	78,177	234,531
Three persons aged 15 or over with one or more persons aged 0 to 14 years	68,671	383,274
Four or more persons aged 15 or over with no persons aged under 15	76,150	1,073,490
Four or more persons aged 15 or over with one or more persons aged under 15	98,754	
Total Private Households	876,659	3,257,011

TABLE 4:- PRIVATE HOUSEHOLDS IN PERMANENT AND TEMPORARY HOUSING UNITS AND PERSONS IN PRIVATE HOUSEHOLDS CLASSIFIED BY SEX, MARITAL STATUS AND AGE GROUP OF THE HEAD OF HOUSEHOLD.*

Sex and Marital Status of Head of Household		Age Group of Head of Household										
		TOTAL	Under 25	25-29	30-34	35-39	40-44	45-49	50-54	55-59	60-64	65+
		Number of Private Households										
Male -	Single	91,371	8,021	6,600	4,727	4,197	5,497	7,541	9,768	11,090	10,577	23,353
	Married	565,861	19,514	59,059	76,276	66,658	59,142	54,620	51,164	50,667	43,526	85,235
	Widowed	28,085	17	42	109	201	438	753	1,497	2,539	3,563	18,926
	Total Male	685,317	27,552	65,701	81,112	71,056	65,077	62,914	62,429	64,296	57,666	127,514
Female -	Single	60,359	10,832	5,837	3,094	2,226	2,316	3,070	4,039	4,924	5,294	18,727
	Married	27,084	1,477	3,171	3,635	3,035	2,757	2,510	2,513	2,386	1,930	3,670
	Widowed	103,899	96	206	500	930	1,802	3,827	6,888	11,477	14,943	63,230
	Total Female	191,342	12,405	9,214	7,229	6,191	6,875	9,407	13,440	18,787	22,167	85,627
		Number of Persons in Private Households										
Male -	Single	149,433	15,798	10,912	7,155	6,139	8,544	11,679	15,214	17,971	17,260	38,761
	Married	2,569,322	58,629	209,824	338,247	347,495	337,620	315,200	273,681	237,071	174,876	276,679
	Widowed	75,967	44	117	329	787	1,853	3,137	5,551	8,091	9,967	46,091
	Total Male	2,794,722	74,471	220,853	345,731	354,421	348,017	330,016	294,446	263,133	202,103	361,531
Female -	Single	101,932	22,909	10,525	5,181	3,358	3,513	4,626	6,309	7,908	8,555	29,048
	Married	97,972	4,231	10,717	14,555	13,850	12,785	11,210	9,720	7,394	5,022	8,488
	Widowed	262,385	279	670	1,938	3,948	8,168	16,092	25,599	34,696	37,408	133,587
	Total Female	462,289	27,419	21,912	21,674	21,156	24,466	31,928	41,628	49,998	50,985	171,123

* See note following Table D in commentary.

TABLE 5A:- PERSONS, MALES AND FEMALES AGED 65 YEARS AND OVER IN PERMANENT AND TEMPORARY HOUSING UNITS IN EACH PROVINCE, COUNTY AND COUNTY BOROUGH DISTINGUISHING THE NUMBER AND PERCENTAGE LIVING ALONE.

Province, County or County Borough	Persons			Males			Females		
	Total	Number living alone	Percentage living alone	Total	Number living alone	Percentage living alone	Total	Number living alone	Percentage living alone
Total	361,375	61,327	17.0	162,968	22,010	13.5	198,407	39,317	19.8
Leinster	158,423	28,872	18.2	66,320	8,262	12.5	92,103	20,610	22.4
Carlow	3,867	587	15.2	1,792	215	12.0	2,075	372	17.9
Dublin City and County	83,486	16,298	19.5	31,129	3,449	11.1	52,357	12,849	24.5
<i>Dublin County Borough</i>	<i>57,567</i>	<i>12,129</i>	<i>21.1</i>	<i>21,014</i>	<i>2,577</i>	<i>12.3</i>	<i>36,553</i>	<i>9,552</i>	<i>26.1</i>
<i>Dun Laoghaire Borough</i>	<i>7,417</i>	<i>1,624</i>	<i>21.9</i>	<i>2,540</i>	<i>278</i>	<i>10.9</i>	<i>4,877</i>	<i>1,346</i>	<i>27.6</i>
<i>Dublin</i>	<i>18,502</i>	<i>2,545</i>	<i>13.8</i>	<i>7,575</i>	<i>594</i>	<i>7.8</i>	<i>10,927</i>	<i>1,951</i>	<i>17.9</i>
Kildare	6,836	1,051	15.4	3,206	392	12.2	3,630	659	18.2
Kilkenny	7,595	1,211	15.9	3,616	488	13.5	3,979	723	18.2
Laoighis	5,510	875	15.9	2,681	373	13.9	2,829	502	17.7
Longford	3,947	699	17.7	1,973	345	17.5	1,974	354	17.9
Louth	7,828	1,490	19.0	3,366	427	12.7	4,462	1,063	23.8
Meath	7,983	1,324	16.6	3,834	514	13.4	4,149	810	19.5
Offaly	5,894	986	16.7	2,943	429	14.6	2,951	557	18.9
Westmeath	6,305	1,095	17.4	3,073	473	15.4	3,232	622	19.2
Wexford	11,121	1,802	16.2	5,183	676	13.0	5,938	1,126	19.0
Wicklow	8,051	1,454	18.1	3,524	481	13.6	4,527	973	21.5
Munster	111,996	18,374	16.4	51,083	6,747	13.2	60,913	11,627	19.1
Clare	10,734	1,647	15.3	5,303	782	14.7	5,431	865	15.9
Cork City and County	43,647	7,230	16.6	19,045	2,310	12.1	24,602	4,920	20.0
<i>Cork County Borough</i>	<i>13,353</i>	<i>2,637</i>	<i>19.7</i>	<i>4,928</i>	<i>558</i>	<i>11.3</i>	<i>8,425</i>	<i>2,079</i>	<i>24.7</i>
<i>Cork</i>	<i>30,294</i>	<i>4,593</i>	<i>15.2</i>	<i>14,117</i>	<i>1,752</i>	<i>12.4</i>	<i>16,177</i>	<i>2,841</i>	<i>17.6</i>
Kerry	16,760	2,573	15.4	8,236	1,156	14.0	8,524	1,417	16.6
Limerick City and County	16,188	2,660	16.4	7,213	940	13.0	8,975	1,720	19.2
<i>Limerick County Borough</i>	<i>5,553</i>	<i>1,034</i>	<i>18.6</i>	<i>2,194</i>	<i>250</i>	<i>11.4</i>	<i>3,359</i>	<i>784</i>	<i>23.3</i>
<i>Limerick</i>	<i>10,635</i>	<i>1,626</i>	<i>15.3</i>	<i>5,019</i>	<i>690</i>	<i>13.7</i>	<i>5,616</i>	<i>936</i>	<i>16.7</i>
Tipperary N.R.	6,924	1,085	15.7	3,301	433	13.1	3,623	652	18.0
Tipperary S.R.	8,551	1,498	17.5	3,948	551	14.0	4,603	947	20.6
Waterford City and County	9,192	1,681	18.3	4,037	575	14.2	5,155	1,106	21.5
<i>Waterford County Borough</i>	<i>3,211</i>	<i>591</i>	<i>18.4</i>	<i>1,248</i>	<i>140</i>	<i>11.2</i>	<i>1,963</i>	<i>451</i>	<i>23.0</i>
<i>Waterford</i>	<i>5,981</i>	<i>1,090</i>	<i>18.2</i>	<i>2,789</i>	<i>435</i>	<i>15.6</i>	<i>3,192</i>	<i>655</i>	<i>20.5</i>
Connacht	60,362	8,759	14.5	30,439	4,450	14.6	29,923	4,309	14.4
Galway	21,144	2,570	12.2	10,615	1,269	12.0	10,529	1,301	12.4
Leitrim	4,830	894	18.5	2,520	508	20.2	2,310	386	16.7
Mayo	18,091	2,573	14.2	9,078	1,283	14.1	9,013	1,290	14.3
Roscommon	8,478	1,364	16.1	4,346	724	16.7	4,132	640	15.5
Sligo	7,819	1,358	17.4	3,880	666	17.2	3,939	692	17.6
Ulster (part of)	30,594	5,322	17.4	15,126	2,551	16.9	15,468	2,771	17.9
Cavan	7,258	1,328	18.3	3,683	696	18.9	3,575	632	17.7
Donegal	17,121	2,863	16.7	8,445	1,367	16.2	8,676	1,496	17.2
Monaghan	6,215	1,131	18.2	2,998	488	16.3	3,217	643	20.0

TABLE 5B:- PERSONS, MALES AND FEMALES AGED 70 YEARS AND OVER IN PERMANENT AND TEMPORARY HOUSING UNITS IN EACH PROVINCE, COUNTY AND COUNTY BOROUGH DISTINGUISHING THE NUMBER AND PERCENTAGE LIVING ALONE.

Province, County or County Borough	Persons			Males			Females		
	Total	Number Living Alone	Percentage Living Alone	Total	Number Living Alone	Percentage Living Alone	Total	Number Living Alone	Percentage Living Alone
Total	227,588	41,007	18.0	97,974	13,809	14.1	129,614	27,198	21.0
Leinster	99,774	19,547	19.6	39,376	5,313	13.5	60,398	14,234	23.6
Carlow	2,431	374	15.4	1,098	131	11.9	1,333	243	18.2
Dublin City and County	52,557	11,193	21.3	18,073	2,297	12.7	34,484	8,896	25.8
<i>Dublin County Borough</i>	<i>36,318</i>	<i>8,347</i>	<i>23.0</i>	<i>12,199</i>	<i>1,719</i>	<i>14.1</i>	<i>24,119</i>	<i>6,628</i>	<i>27.5</i>
<i>Dun Laoghaire Borough</i>	<i>4,910</i>	<i>1,141</i>	<i>23.2</i>	<i>1,547</i>	<i>194</i>	<i>12.5</i>	<i>3,363</i>	<i>947</i>	<i>28.2</i>
<i>Dublin</i>	<i>11,329</i>	<i>1,705</i>	<i>15.0</i>	<i>4,327</i>	<i>384</i>	<i>8.9</i>	<i>7,002</i>	<i>1,321</i>	<i>18.9</i>
Kildare	4,148	684	16.5	1,879	248	13.2	2,269	436	19.2
Kilkenny	4,764	794	16.7	2,159	289	13.4	2,605	505	19.4
Laoighis	3,453	568	16.4	1,603	222	13.8	1,850	346	18.7
Longford	2,431	458	18.8	1,164	215	18.5	1,267	243	19.2
Louth	4,875	987	20.2	2,013	272	13.5	2,862	715	25.0
Meath	4,960	883	17.8	2,289	319	13.9	2,671	564	21.1
Offaly	3,734	657	17.6	1,791	275	15.4	1,943	382	19.7
Westmeath	4,024	731	18.2	1,903	293	15.4	2,121	438	20.7
Wexford	7,219	1,213	16.8	3,247	438	13.5	3,972	775	19.5
Wicklow	5,178	1,005	19.4	2,157	314	14.6	3,021	691	22.9
Munster	70,069	12,198	17.4	30,542	4,166	13.6	39,527	8,032	20.3
Clare	6,851	1,083	15.8	3,268	480	14.7	3,583	603	16.8
Cork City and County	27,344	4,806	17.6	11,317	1,393	12.3	16,027	3,413	21.3
<i>Cork County Borough</i>	<i>8,457</i>	<i>1,796</i>	<i>21.2</i>	<i>2,907</i>	<i>346</i>	<i>11.9</i>	<i>5,550</i>	<i>1,450</i>	<i>26.1</i>
<i>Cork</i>	<i>18,887</i>	<i>3,010</i>	<i>15.9</i>	<i>8,410</i>	<i>1,047</i>	<i>12.4</i>	<i>10,477</i>	<i>1,963</i>	<i>18.7</i>
Kerry	10,195	1,688	16.6	4,835	704	14.6	5,360	984	18.4
Limerick City and County	9,972	1,751	17.6	4,218	580	13.8	5,754	1,171	20.4
<i>Limerick County Borough</i>	<i>3,455</i>	<i>695</i>	<i>20.1</i>	<i>1,306</i>	<i>162</i>	<i>12.4</i>	<i>2,149</i>	<i>533</i>	<i>24.8</i>
<i>Limerick</i>	<i>6,517</i>	<i>1,056</i>	<i>16.2</i>	<i>2,912</i>	<i>418</i>	<i>14.4</i>	<i>3,605</i>	<i>638</i>	<i>17.7</i>
Tipperary N.R.	4,428	750	16.9	2,055	297	14.5	2,373	453	19.1
Tipperary S.R.	5,395	974	18.1	2,379	333	14.0	3,016	641	21.3
Waterford City and County	5,884	1,146	19.5	2,470	379	15.3	3,414	767	22.5
<i>Waterford County Borough</i>	<i>2,049</i>	<i>392</i>	<i>19.1</i>	<i>755</i>	<i>97</i>	<i>12.8</i>	<i>1,294</i>	<i>295</i>	<i>22.8</i>
<i>Waterford</i>	<i>3,835</i>	<i>754</i>	<i>19.7</i>	<i>1,715</i>	<i>282</i>	<i>16.4</i>	<i>2,120</i>	<i>472</i>	<i>22.3</i>
Connacht	38,255	5,705	14.9	18,719	2,713	14.5	19,536	2,992	15.3
Galway	13,447	1,680	12.5	6,629	777	11.7	6,818	903	13.2
Leitrim	3,058	579	18.9	1,515	303	20.0	1,543	276	17.9
Mayo	11,439	1,677	14.7	5,582	782	14.0	5,857	895	15.3
Roscommon	5,379	864	16.1	2,670	441	16.5	2,709	423	15.6
Sligo	4,932	905	18.3	2,323	410	17.6	2,609	495	19.0
Ulster (part of)	19,490	3,557	18.3	9,337	1,617	17.3	10,153	1,940	19.1
Cavan	4,591	859	18.7	2,262	420	18.6	2,329	439	18.8
Donegal	10,968	1,930	17.6	5,254	882	16.8	5,714	1,048	18.3
Monaghan	3,931	768	19.5	1,821	315	17.3	2,110	453	21.5

TABLE 6:- AVERAGE NUMBER OF PERSONS PER PRIVATE HOUSEHOLD IN PERMANENT HOUSING UNITS IN EACH PROVINCE, COUNTY AND COUNTY BOROUGH - 1936 TO 1979.

PROVINCE, COUNTY OR COUNTY BOROUGH	YEAR					
	1936	1946	1961	1966	1971	1979
Total	4.31	4.16	3.97	4.01	3.94	3.73
Leinster	4.25	4.15	4.00	4.07	3.99	3.73
Carlow	4.27	4.16	4.20	4.21	4.17	3.98
Dublin City and County	4.28	4.15	3.95	4.04	3.94	3.64
<i>Dublin County Borough</i>	4.28	4.15	3.91	3.99	3.85	3.43
<i>Dun Laoghaire Borough</i>	4.05	3.91	3.61	3.63	3.57	3.27
<i>Dublin</i>	4.45	4.31	4.29	4.36	4.30	4.03
Kildare	4.20	4.25	4.31	4.41	4.32	4.02
Kilkenny	4.38	4.27	4.11	4.12	4.06	3.84
Laoighis	4.26	4.21	4.07	4.08	4.06	3.89
Longford	4.11	3.99	3.80	3.74	3.69	3.57
Louth	4.26	4.18	4.09	4.16	4.06	3.82
Meath	4.11	4.08	4.05	4.13	4.11	3.92
Offaly	4.25	4.18	4.11	4.16	4.08	3.91
Westmeath	4.08	3.97	3.94	4.01	3.92	3.75
Wexford	4.27	4.17	4.01	4.06	4.05	3.88
Wicklow	4.16	4.05	3.95	4.02	3.95	3.75
Munster	4.39	4.18	3.96	3.99	3.93	3.73
Clare	4.37	4.14	3.88	3.86	3.81	3.66
Cork City and County	4.30	4.07	3.92	3.98	3.93	3.74
<i>Cork County Borough</i>	4.27	4.01	3.95	4.05	3.96	3.71
<i>Cork</i>	4.30	4.09	3.91	3.94	3.91	3.75
Kerry	4.73	4.40	4.02	3.98	3.89	3.68
Limerick City and County	4.48	4.31	4.08	4.12	4.01	3.80
<i>Limerick County Borough</i>	4.46	4.30	4.17	4.31	4.18	3.85
<i>Limerick</i>	4.49	4.31	4.03	4.00	3.91	3.76
Tipperary N.R.	4.32	4.18	4.00	4.04	3.97	3.78
Tipperary S.R.	4.29	4.20	4.00	4.01	3.92	3.71
Waterford City and County	4.25	4.13	3.90	3.97	3.91	3.73
<i>Waterford County Borough</i>	4.45	4.38	4.05	4.14	4.01	3.71
<i>Waterford</i>	4.15	4.00	3.81	3.86	3.85	3.74
Connacht	4.36	4.16	3.94	3.91	3.83	3.70
Galway	4.65	4.52	4.26	4.22	4.13	3.90
Leitrim	4.06	3.80	3.52	3.46	3.38	3.31
Mayo	4.45	4.19	3.99	3.91	3.80	3.71
Roscommon	4.08	3.89	3.65	3.66	3.60	3.54
Sligo	4.09	3.86	3.70	3.69	3.64	3.53
Ulster (part of)	4.24	4.12	3.88	3.84	3.79	3.69
Cavan	4.04	3.93	3.69	3.68	3.64	3.58
Donegal	4.43	4.30	4.03	3.96	3.90	3.75
Monaghan	4.09	3.99	3.75	3.77	3.74	3.66

TABLE 7:- PRIVATE HOUSEHOLDS IN PERMANENT HOUSING UNITS CLASSIFIED BY TYPE AND NUMBER OF PERSONS IN THE HOUSEHOLD.

Type of household	Total households	Number of persons in household											
		1	2	3	4	5	6	7	8	9	10	11	12 or more
One person	142,193	142,193	-	-	-	-	-	-	-	-	-	-	-
Man and wife	96,001	-	96,001	-	-	-	-	-	-	-	-	-	-
Man, wife and one or more children (of any age)	381,240	-	-	82,255	99,631	81,002	54,963	30,485	16,096	8,145	4,550	2,015	2,098
One parent and one or more children (of any age)	68,956	-	33,578	17,082	8,721	4,718	2,367	1,255	603	330	170	79	53
Man and wife with other persons	14,835	-	-	12,572	1,758	359	97	29	7	6	2	2	3
Man, wife and one or more children (of any age) with other persons	60,850	-	-	-	11,166	14,854	13,353	9,503	5,755	3,125	1,626	689	779
One parent and one or more children (of any age) with other persons	14,137	-	-	5,538	3,893	2,219	1,242	630	319	131	98	31	36
Two family units with or without other persons	21,269	-	-	-	2,768	4,106	4,798	3,733	2,570	1,561	945	351	437
Three or more family units with or without other persons	430	-	-	-	-	-	26	75	80	72	67	43	67
Two or more persons but not including a family unit	67,115	-	47,085	13,646	4,126	1,338	472	161	85	41	30	15	116
Total	867,026	142,193	176,664	131,093	132,063	108,596	77,318	45,871	25,515	13,411	7,488	3,225	3,589

**TABLE 8:- PRIVATE HOUSEHOLDS IN PERMANENT HOUSING UNITS IN EACH PROVINCE, COUNTY AND COUNTY BOROUGH
CLASSIFIED BY NUMBER OF PERSONS IN THE HOUSEHOLD.**

Province, County or County Borough	Total Households	Number of Persons in the Household											
		1	2	3	4	5	6	7	8	9	10	11	12+
TOTAL	867,026	142,193	176,664	131,093	132,063	108,596	77,318	45,871	25,515	13,411	7,488	3,225	3,589
LEINSTER	448,451	71,795	88,768	67,712	72,014	58,704	40,676	23,121	12,408	6,372	3,642	1,563	1,676
Carlow	9,359	1,313	1,785	1,415	1,425	1,192	897	551	338	181	130	63	69
Dublin City and County	259,952	44,929	51,509	38,701	41,993	34,389	23,329	12,571	6,358	3,017	1,715	724	717
<i>Dublin County Borough</i>	<i>151,646</i>	<i>34,462</i>	<i>31,912</i>	<i>21,382</i>	<i>20,026</i>	<i>16,765</i>	<i>12,206</i>	<i>6,996</i>	<i>3,805</i>	<i>1,933</i>	<i>1,131</i>	<i>512</i>	<i>516</i>
<i>Dun Laoghaire Borough</i>	<i>15,738</i>	<i>3,419</i>	<i>3,635</i>	<i>2,348</i>	<i>2,330</i>	<i>1,745</i>	<i>1,107</i>	<i>617</i>	<i>303</i>	<i>126</i>	<i>65</i>	<i>18</i>	<i>25</i>
<i>Dublin</i>	<i>92,568</i>	<i>7,048</i>	<i>15,962</i>	<i>14,971</i>	<i>19,637</i>	<i>15,879</i>	<i>10,016</i>	<i>4,958</i>	<i>2,250</i>	<i>958</i>	<i>519</i>	<i>194</i>	<i>176</i>
Kildare	22,899	2,480	4,284	3,537	4,133	3,215	2,298	1,334	742	398	229	129	120
Kilkenny	17,139	2,575	3,352	2,688	2,608	2,176	1,557	984	540	321	177	72	89
Laoghis	12,192	1,850	2,433	1,908	1,760	1,439	1,101	685	469	263	156	48	80
Longford	8,253	1,586	1,777	1,265	1,129	946	665	400	204	137	65	35	44
Louth	21,671	3,066	4,264	3,326	3,512	2,991	1,996	1,196	658	339	168	72	83
Meath	22,380	2,908	4,260	3,450	3,746	3,080	2,153	1,276	693	397	229	80	108
Offaly	14,120	2,095	2,854	2,078	2,083	1,748	1,275	814	500	323	172	94	84
Westmeath	15,067	2,527	3,064	2,324	2,226	1,722	1,319	863	485	260	146	55	76
Wexford	23,778	3,449	4,787	3,554	3,648	2,963	2,218	1,386	802	447	278	121	125
Wicklow	21,641	3,017	4,399	3,466	3,751	2,843	1,868	1,061	619	289	177	70	81
MUNSTER	251,816	40,639	51,540	38,430	37,972	31,661	22,588	13,502	7,579	3,941	2,071	892	1,001
Clare	22,382	3,850	4,681	3,463	3,239	2,687	1,925	1,206	684	302	176	87	82
Cork City and County	102,113	16,212	20,689	15,432	15,925	13,051	9,321	5,461	3,028	1,581	755	305	353
<i>Cork County Borough</i>	<i>35,393</i>	<i>6,243</i>	<i>6,738</i>	<i>4,933</i>	<i>5,501</i>	<i>4,651</i>	<i>3,437</i>	<i>1,923</i>	<i>1,012</i>	<i>499</i>	<i>243</i>	<i>111</i>	<i>102</i>
<i>Cork</i>	<i>66,720</i>	<i>9,969</i>	<i>13,951</i>	<i>10,499</i>	<i>10,424</i>	<i>8,400</i>	<i>5,884</i>	<i>3,538</i>	<i>2,016</i>	<i>1,082</i>	<i>512</i>	<i>194</i>	<i>251</i>
Kerry	31,454	5,451	6,810	4,807	4,343	3,588	2,653	1,674	1,025	557	291	130	125
Limerick City and County	39,491	6,079	7,762	6,024	6,093	5,254	3,639	2,142	1,185	611	348	170	184
<i>Limerick County Borough</i>	<i>14,815</i>	<i>2,365</i>	<i>2,672</i>	<i>2,186</i>	<i>2,320</i>	<i>2,051</i>	<i>1,435</i>	<i>805</i>	<i>464</i>	<i>226</i>	<i>143</i>	<i>73</i>	<i>75</i>
<i>Limerick</i>	<i>24,676</i>	<i>3,714</i>	<i>5,090</i>	<i>3,838</i>	<i>3,773</i>	<i>3,203</i>	<i>2,204</i>	<i>1,337</i>	<i>721</i>	<i>385</i>	<i>205</i>	<i>97</i>	<i>109</i>
Tipperary N.R.	14,836	2,335	3,106	2,297	2,067	1,837	1,350	825	470	280	148	43	78
Tipperary S.R.	19,329	3,209	4,051	2,982	2,842	2,305	1,665	1,031	577	304	187	79	97
Waterford City and County	22,211	3,503	4,441	3,425	3,463	2,939	2,035	1,163	610	306	166	78	82
<i>Waterford County Borough</i>	<i>8,197</i>	<i>1,296</i>	<i>1,604</i>	<i>1,305</i>	<i>1,248</i>	<i>1,109</i>	<i>799</i>	<i>425</i>	<i>201</i>	<i>110</i>	<i>51</i>	<i>23</i>	<i>26</i>
<i>Waterford</i>	<i>14,014</i>	<i>2,207</i>	<i>2,837</i>	<i>2,120</i>	<i>2,215</i>	<i>1,830</i>	<i>1,236</i>	<i>738</i>	<i>409</i>	<i>196</i>	<i>115</i>	<i>55</i>	<i>56</i>
CONNACHT	107,879	19,165	23,525	16,149	14,201	11,826	9,163	6,035	3,601	2,011	1,151	481	571
Galway	40,672	6,136	8,287	6,186	5,715	4,784	3,740	2,526	1,487	826	512	199	274
Leitrim	8,153	1,907	1,977	1,190	907	790	582	360	189	148	59	22	22
Mayo	29,632	5,356	6,586	4,394	3,714	3,054	2,490	1,683	1,085	613	331	162	164
Roscommon	14,845	3,008	3,387	2,191	1,843	1,569	1,155	787	444	211	132	52	66
Sligo	14,577	2,758	3,288	2,188	2,022	1,629	1,196	679	396	213	117	46	45
ULSTER (part of)	58,880	10,594	12,831	8,802	7,876	6,405	4,891	3,213	1,927	1,087	624	289	341
Cavan	14,544	2,899	3,143	2,182	1,904	1,504	1,203	786	415	240	130	68	70
Donegal	31,093	5,279	6,831	4,697	4,107	3,446	2,557	1,712	1,102	639	355	162	206
Monaghan	13,243	2,416	2,857	1,923	1,865	1,455	1,131	715	410	208	139	59	65

**TABLE 9:- PRIVATE HOUSEHOLDS IN PERMANENT HOUSING UNITS IN EACH PROVINCE, COUNTY AND COUNTY BOROUGH CLASSIFIED
BY TYPE AND NUMBER OF PERSONS.**

Type of Household	No. of Persons	Total	Province, County or County Borough						
			Leinster	Munster	Connacht	Ulster (part of)	Carlow	Dublin City and County	Dublin Co. Borough
One person	1	142,193	71,795	40,639	19,165	10,594	1,313	44,929	34,462
Man and wife	2	96,001	50,664	27,642	11,416	6,279	976	29,230	15,780
Man, wife and one or more children (of any age)	Total	381,240	208,480	109,390	40,246	23,124	4,238	120,429	58,343
	3	82,255	43,755	24,005	9,423	5,072	875	25,010	12,154
	4	99,631	56,116	28,246	9,757	5,512	1,036	33,053	14,439
	5	81,002	45,382	23,252	7,869	4,499	868	27,057	12,483
	6	54,963	30,152	15,780	5,663	3,368	632	17,735	8,971
	7	30,485	16,267	8,725	3,446	2,047	359	9,139	5,027
	8	16,096	8,323	4,643	1,906	1,224	194	4,419	2,628
	9	8,145	4,132	2,341	1,019	653	116	2,028	1,290
	10	4,550	2,288	1,277	607	378	70	1,091	726
	11	2,015	1,048	548	247	172	44	487	340
	12+	2,098	1,017	573	309	199	44	410	285
One parent and one or more children (of any age)	Total	68,956	33,684	20,314	9,728	5,230	767	19,169	12,402
	2	33,578	15,594	10,059	5,253	2,672	354	8,888	6,027
	3	17,082	8,464	5,033	2,290	1,295	191	4,813	3,051
	4	8,721	4,537	2,532	1,053	599	95	2,620	1,524
	5	4,718	2,535	1,313	546	324	54	1,489	919
	6	2,367	1,244	681	302	140	30	689	442
	7	1,255	663	353	142	97	21	350	225
	8	603	306	182	63	52	8	163	108
	9	330	179	86	36	29	6	86	58
	10	170	93	43	21	13	6	41	27
	11	79	39	19	13	8	1	18	10
	12+	53	30	13	9	1	1	12	11
Man and wife with other persons	Total	14,835	6,912	4,536	2,274	1,113	171	3,671	2,262
	3	12,572	5,866	3,851	1,905	950	140	3,073	1,880
	4	1,758	793	542	293	130	24	446	276
	5	359	169	110	56	24	5	104	69
	6	97	58	25	12	2	1	36	26
	7	29	14	4	5	6	-	8	8
	8	7	4	2	1	-	1	1	-
	9	6	3	1	2	-	-	1	1
	10	2	1	-	-	1	-	-	-
	11	2	2	-	-	-	-	1	1
	12+	3	2	1	-	-	-	1	1
Man, wife and one or more children (of any age) with other persons	Total	60,850	27,241	19,295	9,867	4,447	781	13,606	7,540
	4	11,166	5,221	3,527	1,621	797	138	2,680	1,583
	5	14,854	6,883	4,733	2,231	1,007	175	3,628	1,952
	6	13,353	6,184	4,187	2,060	922	153	3,251	1,716
	7	9,503	4,077	3,072	1,645	709	120	2,000	1,059
	8	5,755	2,409	1,868	1,035	443	94	1,080	613
	9	3,125	1,216	1,008	633	268	41	487	302
	10	1,626	691	462	333	140	36	277	169
	11	689	267	203	150	69	9	102	70
	12+	779	293	235	159	92	15	101	76

One parent and one or more children (of any age) with other persons	Total	14,137	6,814	4,267	1,873	1,183	168	3,667	2,329	
	3	5,538	2,673	1,672	749	444	67	1,486	989	
	4	3,893	1,862	1,185	493	353	43	1,007	632	
	5	2,219	1,094	653	276	196	22	608	372	
	6	1,242	595	387	172	88	19	304	178	
	7	630	299	191	91	49	8	142	84	
	8	319	153	100	46	20	5	60	37	
	9	131	59	33	24	15	-	28	18	
	10	98	48	32	10	8	1	20	12	
	11	31	17	5	6	3	3	6	4	
	12+	36	14	9	6	7	-	6	3	
	Two family units with or without other persons	Total	21,269	9,777	6,230	3,721	1,541	261	5,094	3,306
		4	2,768	1,277	842	451	198	34	714	461
5		4,106	1,930	1,268	631	277	53	995	609	
6		4,798	2,185	1,400	873	340	59	1,126	734	
7		3,733	1,681	1,096	669	287	39	853	533	
8		2,570	1,132	736	522	180	34	580	383	
9		1,561	715	448	284	114	17	355	239	
10		945	470	236	165	74	15	251	176	
11		351	159	101	57	34	3	87	68	
12+		437	228	103	69	37	7	133	103	
Three or more family units with or without other persons		Total	430	225	105	65	35	9	136	99
		6	26	12	10	2	2	-	9	5
		7	75	34	23	10	8	2	20	14
	8	80	35	23	17	5	1	21	16	
	9	72	44	13	8	7	-	20	15	
	10	67	36	11	12	8	2	23	14	
	11	43	26	9	6	2	2	20	16	
	12+	67	38	16	10	3	2	23	19	
Two or more persons but not including a family unit	Total	67,115	32,859	19,398	9,524	5,334	675	20,021	15,123	
	2	47,085	22,510	13,839	6,856	3,880	455	13,391	10,105	
	3	13,646	6,954	3,869	1,782	1,041	142	4,319	3,308	
	4	4,126	2,208	1,098	533	287	55	1,473	1,111	
	5	1,338	711	332	217	78	15	508	361	
	6	472	246	118	79	29	3	179	134	
	7	161	86	38	27	10	2	59	46	
	8	85	46	25	11	3	1	34	20	
	9	41	24	11	5	1	1	12	10	
	10	30	15	10	3	2	-	12	7	
	11	15	5	7	2	1	1	3	3	
	12+	116	54	51	9	2	-	31	18	

TABLE 9 (contd.):- PRIVATE HOUSEHOLDS IN PERMANENT HOUSING UNITS IN EACH PROVINCE, COUNTY AND COUNTY BOROUGH CLASSIFIED BY TYPE AND NUMBER OF PERSONS.

Type of Household	No. of Persons	Province, County or County Borough							
		Dun Laoghaire Borough	Dublin	Kildare	Kilkenny	Laoighis	Longford	Louth	Meath
One person	1	3,419	7,048	2,480	2,575	1,850	1,586	3,066	2,908
Man and wife	2	1,961	11,489	2,775	1,791	1,294	881	2,505	2,567
Man, wife and one or more children (of any age)	Total	5,784	56,302	11,958	7,505	5,340	3,335	10,729	11,205
	3	1,369	11,487	2,407	1,636	1,172	802	2,264	2,322
	4	1,735	16,879	3,305	1,924	1,290	826	2,777	2,971
	5	1,217	13,357	2,550	1,552	1,051	680	2,356	2,398
	6	750	8,014	1,673	1,054	751	461	1,529	1,614
	7	392	3,720	925	618	440	266	885	917
	8	184	1,607	497	331	306	122	466	454
	9	78	660	278	190	159	81	231	252
	10	40	325	152	102	96	42	120	151
	11	8	139	91	42	31	26	46	57
	12+	11	114	80	56	44	29	55	69
One parent and one or more children (of any age)	Total	1,305	5,462	1,600	1,331	972	714	1,711	1,682
	2	668	2,193	660	633	439	382	788	760
	3	321	1,441	425	350	239	164	395	421
	4	166	930	223	158	135	77	253	243
	5	87	483	132	86	58	40	137	127
	6	32	215	82	51	40	25	68	68
	7	16	109	45	23	32	15	34	26
	8	10	45	12	14	17	5	17	12
	9	3	25	10	9	2	1	9	15
	10	-	14	6	4	4	3	5	6
	11	2	6	4	2	3	-	4	1
	12+	-	1	1	1	3	2	1	3
Man and wife with other persons	Total	311	1,098	372	309	216	156	290	351
	3	270	923	308	269	197	131	253	307
	4	31	139	51	27	15	21	28	35
	5	6	29	9	9	3	3	5	3
	6	4	6	2	3	1	1	2	4
	7	-	-	2	1	-	-	-	-
	8	-	1	-	-	-	-	-	1
	9	-	-	-	-	-	-	-	1
	10	-	-	-	-	-	-	-	-
	11	-	-	-	-	-	-	1	-
	12+	-	-	-	-	-	-	-	-
Man, wife and one or more children, (of any age) with other persons	Total	960	5,106	1,564	1,454	966	555	1,215	1,544
	4	189	908	286	274	179	114	222	271
	5	284	1,392	356	363	223	141	318	360
	6	220	1,315	353	311	206	121	264	335
	7	144	797	254	224	136	81	185	244
	8	74	393	159	129	97	44	116	158
	9	29	156	67	76	63	29	54	87
	10	11	97	50	40	32	11	28	46
	11	4	28	20	22	9	6	14	14
	12+	5	20	19	15	21	8	14	29

One parent and one or more children (of any age) with other persons	Total	289	1,049	361	310	215	131	297	364	
	3	117	380	124	120	80	50	108	137	
	4	77	298	107	77	61	33	75	97	
	5	50	186	55	50	23	19	55	67	
	6	26	100	39	22	26	14	30	31	
	7	10	48	14	24	15	2	10	14	
	8	5	18	12	10	5	5	11	8	
	9	1	9	3	1	3	4	6	5	
	10	-	8	4	3	1	2	1	2	
	11	1	1	2	1	-	1	1	2	
	12+	2	1	1	2	1	1	-	1	
	Two family units with or without other persons	Total	289	1,499	537	492	337	215	437	433
		4	46	207	74	64	29	29	64	53
5		71	315	96	95	67	54	96	94	
6		63	329	140	111	72	40	93	93	
7		50	270	89	90	61	32	75	71	
8		25	172	58	52	42	28	46	59	
9		14	102	37	40	31	21	34	32	
10		12	63	15	26	23	6	13	21	
11		2	17	12	3	5	2	6	6	
12+		6	24	16	11	7	3	10	4	
Three or more family units with or without other persons		Total	5	32	7	11	8	3	5	8
		6	2	2	-	1	-	-	1	-
		7	-	6	1	-	1	1	-	2
	8	-	5	3	2	2	-	-	-	
	9	1	4	-	5	3	1	2	5	
	10	1	8	2	1	-	1	1	1	
	11	1	3	-	1	-	-	-	-	
	12+	-	4	1	1	2	-	1	-	
	Two or more persons but not including a family unit	Total	1,415	3,483	1,245	1,361	994	677	1,416	1,318
2		1,006	2,280	849	928	700	514	971	933	
3		271	740	273	313	220	118	306	263	
4		86	276	87	84	51	29	93	76	
5		30	117	17	21	14	9	24	31	
6		10	35	9	4	5	3	9	8	
7		5	8	4	4	-	3	6	2	
8		5	9	1	2	-	-	2	2	
9		-	2	3	-	2	-	3	-	
10		1	4	-	1	-	-	-	1	
11		-	-	-	1	-	-	-	-	
12+		1	12	2	3	2	1	2	2	

TABLE 9 (contd.): - PRIVATE HOUSEHOLDS IN PERMANENT HOUSING UNITS IN EACH PROVINCE, COUNTY AND COUNTY BOROUGH CLASSIFIED BY TYPE AND NUMBER OF PERSONS.

Type of Household	No. of Persons	Province, County or County Borough							
		Offaly	Westmeath	Wexford	Wicklow	Clare	Cork City and County	Cork County Borough	Cork
One person	1	2,095	2,527	3,449	3,017	3,850	16,212	6,243	9,969
Man and wife	2	1,547	1,684	2,636	2,778	2,477	11,184	3,482	7,702
	Total	6,382	6,630	10,391	10,338	9,333	45,159	16,136	29,023
Man, wife and one or more children (of any age)	3	1,273	1,488	2,146	2,360	2,198	9,612	3,027	6,585
	4	1,534	1,690	2,704	3,006	2,436	11,920	4,159	7,761
	5	1,318	1,279	2,108	2,165	1,934	9,705	3,589	6,116
	6	935	931	1,508	1,329	1,303	6,583	2,577	4,006
	7	546	593	849	730	728	3,597	1,404	2,193
	8	321	316	505	392	388	1,916	720	1,196
	9	221	161	250	165	151	950	340	610
	10	101	84	172	107	108	478	173	305
	11	67	41	79	37	50	195	81	114
	12+	66	47	70	47	37	203	66	137
	Total	1,131	1,244	1,814	1,549	1,708	8,196	2,809	5,387
One parent and one or more children (of any age)	2	535	593	854	708	920	3,964	1,331	2,633
	3	278	317	473	398	410	2,062	698	1,364
	4	148	149	220	216	171	1,067	369	698
	5	87	84	126	115	103	533	204	329
	6	32	48	56	55	60	280	108	172
	7	24	28	43	22	18	157	56	101
	8	16	11	14	17	17	78	28	50
	9	6	7	15	13	5	36	9	27
	10	3	5	9	1	2	7	3	4
	11	2	-	2	2	2	9	1	8
	12+	-	2	2	2	-	3	2	1
	Total	277	246	482	371	449	1,737	437	1,300
Man and wife with other persons	3	248	202	422	316	388	1,473	369	1,104
	4	24	29	48	45	52	198	42	156
	5	4	8	9	7	9	50	20	30
	6	-	6	2	-	-	11	2	9
	7	-	1	-	1	-	2	2	-
	8	1	-	-	1	-	2	1	1
	9	-	-	1	-	-	-	-	-
	10	-	-	-	-	-	-	-	-
	11	-	-	-	-	-	-	-	-
	12+	-	-	-	1	-	1	1	-
	Total	1,078	1,072	1,954	1,452	1,903	7,625	2,100	5,525
Man, wife and one or more children (of any age) with other persons	4	217	195	367	278	340	1,417	389	1,028
	5	233	230	466	390	458	1,883	544	1,339
	6	215	245	415	315	400	1,729	515	1,214
	7	168	167	298	200	315	1,203	325	878
	8	113	114	181	124	199	694	167	527
	9	65	62	115	70	96	386	90	296
	10	40	33	57	41	44	177	43	134
	11	15	12	24	20	21	57	13	44
	12+	12	14	31	14	30	79	14	65

One parent and one or more children (of any age) with other persons	Total	219	232	492	358	355	1,756	590	1,166	
	3	90	99	188	124	140	687	229	458	
	4	55	62	148	97	95	514	188	326	
	5	35	25	72	63	52	256	72	184	
	6	15	18	38	39	34	151	57	94	
	7	13	14	25	18	20	72	22	50	
	8	5	6	16	10	11	50	15	35	
	9	-	2	2	5	2	11	3	8	
	10	6	5	2	1	-	10	3	7	
	11	-	1	-	-	1	-	-	-	
	12+	-	-	1	1	-	5	1	4	
	Two family units with or without other persons	Total	351	328	801	491	558	2,303	625	1,678
		4	49	40	79	48	66	315	94	221
5		63	76	157	84	106	474	129	345	
6		74	68	187	122	118	504	139	365	
7		59	59	165	88	119	406	104	302	
8		42	35	83	73	63	271	69	202	
9		30	24	62	32	45	189	51	138	
10		19	18	36	27	21	77	20	57	
11		9	1	16	9	10	37	12	25	
12+		6	7	16	8	10	30	7	23	
Three or more family units with or without other persons	Total	8	6	10	14	11	32	15	17	
	6	-	-	-	1	-	4	1	3	
	7	3	1	1	2	3	5	2	3	
	8	-	2	2	2	4	7	6	1	
	9	1	2	1	4	1	3	2	1	
	10	3	-	2	-	-	5	-	5	
	11	1	-	-	2	2	4	2	2	
12+	-	1	4	3	1	4	2	2		
Two or more persons but not including a family unit.	Total	1,032	1,098	1,749	1,273	1,738	7,909	2,956	4,953	
	2	772	787	1,297	913	1,284	5,541	1,925	3,616	
	3	189	218	325	268	327	1,598	610	988	
	4	56	61	82	61	79	494	260	234	
	5	8	20	25	19	25	150	93	57	
	6	4	3	12	7	10	59	38	21	
	7	1	-	5	-	3	19	8	11	
	8	2	1	1	-	2	10	6	4	
	9	-	2	1	-	2	6	4	2	
	10	-	1	-	-	1	1	1	-	
	11	-	-	-	-	1	3	2	1	
	12+	-	5	1	5	4	28	9	19	

TABLE 9 (contd.):- PRIVATE HOUSEHOLDS IN PERMANENT HOUSING UNITS IN EACH PROVINCE, COUNTY AND COUNTY BOROUGH CLASSIFIED BY TYPE AND NUMBER OF PERSONS.

Type of Household	No. of Persons	Province, County or County Borough							
		Kerry	Limerick City and County	Limerick County Borough	Limerick	Tipperary N.R.	Tipperary S.R.	Waterford City and County	Waterford Co. Borough
One person	1	5,451	6,079	2,365	3,714	2,335	3,209	3,503	1,296
Man and wife	2	3,477	4,222	1,446	2,776	1,643	2,123	2,516	942
Man, wife and one or more children (of any age)	Total	12,254	17,830	7,031	10,799	6,250	8,316	10,248	3,899
	3	2,870	3,836	1,392	2,444	1,406	1,883	2,200	860
	4	3,053	4,524	1,772	2,752	1,506	2,108	2,699	963
	5	2,471	3,887	1,567	2,320	1,312	1,695	2,248	861
	6	1,732	2,570	1,075	1,495	919	1,140	1,533	626
	7	973	1,431	574	857	510	688	798	309
	8	570	748	306	442	262	374	385	135
	9	294	383	161	222	167	197	199	85
	10	156	226	92	134	97	114	98	29
	11	64	109	43	66	26	56	48	16
	12+	71	116	49	67	45	61	40	15
One parent and one or more children (of any age)	Total	2,630	3,196	1,190	2,006	1,257	1,614	1,713	647
	2	1,416	1,511	539	972	608	800	840	308
	3	634	768	273	495	324	391	444	168
	4	288	432	167	265	146	212	216	86
	5	144	245	107	138	81	89	118	47
	6	76	117	52	65	44	60	44	25
	7	40	57	26	31	26	29	26	7
	8	15	29	14	15	15	16	12	3
	9	5	20	7	13	5	10	5	1
	10	11	10	4	6	6	4	3	-
	11	-	3	-	3	1	-	4	2
	12+	1	4	1	3	1	3	1	-
Man and wife with other persons	Total	651	672	223	449	283	374	370	119
	3	542	575	196	379	247	313	313	102
	4	94	76	20	56	32	46	44	16
	5	13	13	5	8	3	11	11	1
	6	2	7	1	6	1	2	2	-
	7	-	-	-	-	-	2	-	-
	8	-	-	-	-	-	-	-	-
	9	-	1	1	-	-	-	-	-
	10	-	-	-	-	-	-	-	-
	11	-	-	-	-	-	-	-	-
	12+	-	-	-	-	-	-	-	-
Man, wife and one or more children (of any age) with other persons	Total	2,689	2,868	901	1,967	1,265	1,425	1,520	483
	4	481	539	171	368	202	270	278	98
	5	635	714	221	493	306	347	390	136
	6	529	633	195	438	266	299	331	104
	7	435	444	138	306	211	232	232	71
	8	288	265	88	177	146	130	146	43
	9	172	138	37	101	76	71	69	14
	10	71	64	22	42	27	43	36	10
	11	40	39	20	19	13	15	18	3
	12+	38	32	9	23	18	18	20	4

One parent and one or more children (of any age) with other persons	Total	549	700	263	437	236	343	328	121	
	3	225	274	105	169	81	123	142	58	
	4	158	186	67	119	62	93	77	27	
	5	78	120	44	76	38	65	44	16	
	6	45	63	24	39	25	39	30	10	
	7	19	29	8	21	17	11	23	8	
	8	13	11	6	5	4	5	6	-	
	9	6	6	3	3	4	2	2	1	
	10	5	8	5	3	5	4	-	-	
	11	-	2	-	2	-	-	2	1	
	12+	-	1	1	-	-	-	1	2	-
	Two family units with or without other persons	Total	1,093	1,009	350	659	375	423	469	170
4		141	140	45	95	59	55	66	28	
5		212	217	76	141	75	77	107	39	
6		255	230	77	153	92	114	87	30	
7		199	172	56	116	55	65	80	28	
8		133	117	42	75	43	49	60	20	
9		74	61	16	45	28	23	28	9	
10		48	35	17	18	12	20	23	10	
11		23	15	10	5	2	8	6	1	
12+		8	22	11	11	9	12	12	5	
Three or more family units with or without other persons	Total	21	18	6	12	4	9	10	4	
	6	4	1	-	1	-	1	-	-	
	7	6	3	-	3	1	3	2	2	
	8	3	7	4	3	-	1	1	-	
	9	4	2	1	1	-	1	2	-	
	10	-	1	-	1	1	2	2	-	
	11	2	1	-	1	-	-	-	-	
	12+	2	3	1	2	2	1	3	2	
Two or more persons but not including a family unit	Total	2,639	2,897	1,040	1,857	1,188	1,493	1,534	516	
	2	1,917	2,029	687	1,342	855	1,128	1,085	354	
	3	536	571	220	351	239	272	326	117	
	4	128	196	78	118	60	58	83	30	
	5	35	58	31	27	22	21	21	9	
	6	10	18	11	7	3	10	8	4	
	7	2	6	3	3	5	1	2	-	
	8	3	8	4	4	-	2	-	-	
	9	2	-	-	-	-	-	1	-	
	10	-	4	3	1	-	-	4	2	
	11	1	1	-	1	1	-	-	-	
	12+	5	6	3	3	3	1	4	-	

TABLE 9 (contd.):- PRIVATE HOUSEHOLDS IN PERMANENT HOUSING UNITS IN EACH PROVINCE, COUNTY AND COUNTY BOROUGH CLASSIFIED BY TYPE AND NUMBER OF PERSONS.

Type of Household	No. of Persons	Province, County or County Borough								
		Waterford	Galway	Leitrim	Mayo	Roscommon	Sligo	Cavan	Donegal	Monaghan
One person	1	2,207	6,136	1,907	5,356	3,008	2,758	2,899	5,279	2,416
Man and wife	2	1,574	4,099	933	3,116	1,589	1,679	1,442	3,405	1,432
Man, wife and one or more children (of any age)	Total	6,349	16,135	2,671	10,517	5,296	5,627	5,493	12,116	5,515
	3	1,340	3,576	684	2,516	1,306	1,341	1,275	2,593	1,204
	4	1,736	3,927	613	2,471	1,286	1,460	1,323	2,815	1,374
	5	1,387	3,126	543	1,963	1,078	1,159	1,045	2,369	1,085
	6	907	2,375	366	1,453	692	777	808	1,766	794
	7	489	1,430	228	919	469	400	495	1,069	483
	8	250	778	96	559	235	238	255	684	285
	9	114	406	76	302	107	128	142	380	131
	10	69	274	33	174	63	63	78	213	87
	11	32	97	17	78	24	31	31	105	36
	12+	25	146	15	82	36	30	41	122	36
One parent and one or more children (of any age)	Total	1,066	3,463	845	2,804	1,403	1,213	1,407	2,607	1,216
	2	532	1,724	507	1,580	802	640	728	1,311	633
	3	276	841	185	642	318	304	352	660	283
	4	130	417	85	284	136	131	152	308	139
	5	71	238	30	125	82	71	89	167	68
	6	19	118	18	96	34	36	34	64	42
	7	19	62	10	35	19	16	28	47	22
	8	9	28	6	13	9	7	9	27	16
	9	4	17	2	12	2	3	6	15	8
	10	3	7	1	11	1	1	4	5	4
	11	2	5	-	4	-	4	4	3	1
	12+	1	6	1	2	-	-	1	-	-
Man and wife with other persons	Total	251	861	179	648	287	299	258	655	200
	3	211	712	151	551	255	236	224	553	173
	4	28	118	23	82	24	46	26	79	25
	5	10	25	4	12	6	9	3	19	2
	6	2	5	1	2	1	3	-	2	-
	7	-	1	-	1	-	3	5	1	-
	8	-	-	-	-	1	-	-	-	-
	9	-	-	-	-	-	2	-	-	-
	10	-	-	-	-	-	-	-	1	-
	11	-	-	-	-	-	-	-	-	-
	12+	-	-	-	-	-	-	-	-	-
Man, wife and one or more children (of any age) with other persons	Total	1,037	3,915	622	2,897	1,304	1,129	1,139	2,422	886
	4	180	603	111	478	232	197	225	406	166
	5	254	870	148	639	284	290	254	556	197
	6	227	785	138	588	298	251	249	490	183
	7	161	672	87	485	215	186	171	391	147
	8	103	419	60	325	128	103	111	253	79
	9	55	275	51	185	68	54	57	161	50
	10	26	154	17	88	40	34	31	80	29
	11	15	67	5	54	17	7	21	34	14
	12+	16	70	5	55	22	7	20	51	21

One parent and one or more children (of any age) with other persons	Total	207	788	135	503	239	208	248	707	228	
	3	84	273	67	207	116	86	100	266	78	
	4	50	205	36	127	63	62	81	204	68	
	5	28	140	17	72	22	25	35	121	40	
	6	20	65	11	54	21	21	18	47	23	
	7	15	53	-	24	9	5	10	28	11	
	8	6	29	2	9	4	2	1	19	-	
	9	1	11	2	6	1	4	2	9	4	
	10	-	5	-	1	2	2	-	5	3	
	11	1	2	-	3	1	-	1	2	-	
	12+	2	5	-	-	-	1	-	6	1	
	Two family units with or without other persons	Total	299	1,494	192	1,212	472	351	373	877	291
		4	38	163	27	139	68	54	47	106	45
5		68	248	39	203	90	51	63	166	48	
6		57	342	46	284	106	95	91	171	78	
7		52	284	33	211	75	66	72	166	49	
8		40	216	24	175	63	44	37	114	29	
9		19	112	16	104	33	19	31	68	15	
10		13	66	7	53	24	15	14	46	14	
11		5	25	-	22	7	3	10	17	7	
12+		7	38	-	21	6	4	8	23	6	
Three or more family units with or without other persons	Total	6	28	6	14	8	9	7	23	5	
	6	-	-	-	2	-	-	-	2	-	
	7	-	4	2	2	-	2	2	5	1	
	8	1	9	1	3	3	1	1	3	1	
	9	2	3	1	2	-	2	2	5	-	
	10	2	4	1	3	2	2	2	4	2	
	11	-	1	-	1	3	1	-	1	1	
	12+	1	7	1	1	-	1	-	3	-	
Two or more persons but not including a family unit	Total	1,018	3,753	663	2,565	1,239	1,304	1,278	3,002	1,054	
	2	731	2,464	537	1,890	996	969	973	2,115	792	
	3	209	784	103	478	196	221	231	625	185	
	4	53	282	12	133	34	72	50	189	48	
	5	12	137	9	40	7	24	15	48	15	
	6	4	50	2	11	3	13	3	15	11	
	7	2	20	-	6	-	1	3	5	2	
	8	-	8	-	1	1	1	1	2	-	
	9	1	2	-	2	-	1	-	1	-	
	10	2	2	-	1	-	-	1	1	-	
	11	-	2	-	-	-	-	1	-	-	
	12+	4	2	-	3	2	2	-	1	1	

TABLE 10:- PRIVATE HOUSEHOLDS IN PERMANENT HOUSING UNITS CLASSIFIED BY TYPE AND NUMBER OF PERSONS AND BY SEX AND AGE GROUP OF HEAD OF HOUSEHOLD.*

Type of Household	No. of Persons	Total	Male Head					Female Head				
			Total	Under 25	25-44	45-64	65+	Total	Under 25	25-44	45-64	65+
One person	1	142,193	68,690	4,186	15,926	27,316	21,262	73,503	4,706	9,247	20,689	38,861
Man and wife	2	96,001	93,635	6,211	25,447	26,481	35,496	2,366	413	913	589	451
Man, wife and one or more children (of any age)	Total	381,240	374,818	10,415	197,411	134,794	32,198	6,422	443	4,155	1,565	259
	3	82,255	80,566	6,422	33,286	24,253	16,605	1,689	266	835	404	184
	4	99,631	97,777	3,126	57,787	28,795	8,069	1,854	126	1,276	396	56
	5	81,002	79,719	679	48,639	26,656	3,745	1,283	36	972	263	12
	6	54,963	54,143	135	30,216	21,823	1,969	820	12	574	228	6
	7	30,485	30,115	36	14,568	14,574	937	370	1	253	115	1
	8	16,096	15,902	9	6,758	8,693	442	194	2	119	73	-
	9	8,145	8,040	3	3,134	4,684	219	105	-	65	40	-
	10	4,550	4,502	3	1,674	2,709	116	48	-	30	18	-
	11	2,015	1,982	2	672	1,262	46	33	-	15	18	-
	12+	2,098	2,072	-	677	1,345	50	26	-	16	10	-
	One parent and one or more children (of any age)	Total	68,956	14,366	42	1,698	5,784	6,842	54,590	480	7,754	23,289
2		33,578	6,871	29	379	1,912	4,551	26,707	263	1,550	8,765	16,129
3		17,082	3,434	12	480	1,427	1,515	13,648	149	2,089	6,175	5,235
4		8,721	1,919	1	355	1,051	512	6,802	55	1,719	3,722	1,306
5		4,718	1,020	-	258	603	159	3,698	9	1,126	2,260	303
6		2,367	538	-	114	362	62	1,829	2	585	1,176	66
7		1,255	291	-	52	214	25	964	-	333	605	26
8		603	151	-	34	107	10	452	1	160	289	2
9		330	82	-	19	57	6	248	-	90	158	-
10		170	34	-	3	29	2	136	1	51	84	-
11		79	14	-	3	11	-	65	-	30	35	-
12+		53	12	-	1	11	-	41	-	21	20	-
Man and wife with other persons	Total	14,835	12,674	302	2,537	4,750	5,085	2,161	56	171	755	1,179
	3	12,572	10,767	233	2,134	4,011	4,389	1,805	34	142	623	1,006
	4	1,758	1,488	39	311	588	550	270	14	19	100	137
	5	359	307	20	67	117	103	52	5	7	14	26
	6	97	73	3	18	22	30	24	1	2	14	7
	7	29	24	2	4	9	9	5	-	-	2	3
	8	7	5	1	1	2	1	2	-	1	1	-
	9	6	4	2	1	-	1	2	1	-	1	-
	10	2	1	-	-	-	1	1	1	-	-	-
	11	2	2	-	1	1	-	-	-	-	-	-
12+	3	3	-	2	-	-	1	-	-	-	-	

Man, wife and one or more children (of any age) with other persons	Total	60,850	55,243	635	24,285	23,364	6,959	5,607	64	567	1,709	3,267	
	4	11,166	9,670	291	3,310	3,683	2,386	1,496	28	117	578	773	
	5	14,854	13,190	227	6,284	4,818	1,861	1,664	17	138	537	972	
	6	13,353	12,191	83	6,157	4,690	1,261	1,162	11	142	316	693	
	7	9,503	8,852	18	4,199	3,917	718	651	2	83	158	408	
	8	5,755	5,412	7	2,333	2,726	346	343	4	41	71	227	
	9	3,125	2,977	3	1,144	1,620	210	148	1	26	24	97	
	10	1,626	1,553	4	507	941	101	73	1	9	12	51	
	11	689	661	-	178	441	42	28	-	5	6	17	
	12+	779	737	2	173	528	34	42	-	6	7	29	
	One parent and one or more children (of any age) with other persons	Total	14,137	3,487	45	669	1,418	1,355	10,650	132	1,551	4,842	4,125
		3	5,538	1,272	23	175	402	672	4,266	52	305	1,582	2,327
		4	3,893	966	9	184	388	385	2,927	52	413	1,305	1,157
5		2,219	585	5	141	267	172	1,634	21	344	868	401	
6		1,242	331	2	85	173	71	911	6	233	517	155	
7		630	157	1	39	90	27	473	1	123	294	55	
8		319	88	2	24	47	15	231	-	61	155	15	
9		131	42	2	10	23	7	89	-	34	48	7	
10		98	27	1	6	19	1	71	-	22	46	3	
11		31	10	-	2	4	4	21	-	9	11	1	
12+		36	9	-	3	5	1	27	-	7	16	4	
Two family units with or without other persons		Total	21,269	17,792	182	4,448	7,175	5,987	3,477	43	334	1,864	1,236
		4	2,768	2,185	38	367	778	1,002	583	13	31	268	271
	5	4,106	3,259	55	625	1,280	1,299	847	14	80	421	332	
	6	4,798	3,982	46	975	1,454	1,507	816	10	72	462	272	
	7	3,733	3,164	19	961	1,193	991	569	2	67	338	162	
	8	2,570	2,259	13	708	908	630	311	-	35	162	114	
	9	1,561	1,408	5	432	651	320	153	1	18	96	38	
	10	945	831	3	230	447	151	114	-	18	68	28	
	11	351	312	2	68	189	53	39	-	6	21	12	
	12+	437	392	1	82	275	34	45	3	7	28	7	
	Three or more family units with or without other persons	Total	430	352	4	44	210	94	78	1	4	56	17
		6	26	19	-	1	10	8	7	-	-	3	4
		7	75	55	1	9	28	17	20	1	-	14	5
8		80	64	-	10	31	23	16	-	3	10	3	
9		72	56	1	7	33	15	16	-	1	12	3	
10		67	60	1	6	37	16	7	-	-	5	2	
11		43	39	-	3	28	8	4	-	-	4	-	
12+		67	59	1	8	43	7	8	-	-	8	-	
Two or more persons but not including a family unit	Total	67,115	36,004	3,763	6,611	14,523	11,107	31,111	5,938	4,537	8,077	12,559	
	2	47,085	25,125	1,950	4,509	10,548	8,118	21,960	2,974	2,932	6,043	10,011	
	3	13,646	7,634	951	1,349	3,019	2,315	6,012	1,590	992	1,468	1,962	
	4	4,126	2,169	490	477	692	510	1,957	819	390	355	393	
	5	1,338	674	231	159	149	135	664	319	131	111	103	
	6	472	214	77	62	59	16	258	141	43	34	40	
	7	161	72	29	22	17	4	89	49	16	16	8	
	8	85	41	11	15	14	1	44	16	8	8	12	
	9	41	22	12	4	6	-	19	7	4	5	3	
	10	30	11	5	1	4	1	19	6	2	9	2	
	11	15	6	3	2	1	-	9	3	2	2	2	
	12+	116	36	4	11	14	7	80	14	17	26	23	
	TOTAL		867,026	677,061	25,785	279,076	245,815	126,385	189,965	12,276	29,233	63,435	85,021

*See note following Table D in commentary.

**TABLE 11A:- PRIVATE HOUSEHOLDS IN PERMANENT HOUSING UNITS HAVING MALE HEADS CLASSIFIED BY TYPE AND NUMBER OF PERSONS
AND BY AGE GROUP OF MALE HEAD OF HOUSEHOLD ***

Type of Household	No. of Persons	Age Group of Male Head											
		Under 25	25-29	30-34	35-39	40-44	45-49	50-54	55-59	60-64	65-69	70-74	75 and over
One person	1	4,186	4,546	3,830	3,347	4,203	5,379	6,807	7,627	7,503	7,892	6,293	7,077
Man and wife	2	6,211	12,795	6,808	3,320	2,524	3,052	4,813	7,842	10,774	14,416	11,122	9,958
Man, wife and one or more children (of any age)	Total	10,415	39,157	58,990	52,852	46,412	41,392	36,423	32,776	24,203	17,149	8,576	6,473
	3	6,422	14,808	10,556	4,733	3,189	3,532	5,072	7,465	8,184	7,792	4,718	4,095
	4	3,126	15,396	21,073	12,840	8,478	7,351	7,342	7,910	6,192	4,375	2,112	1,582
	5	679	6,401	15,920	15,154	11,164	8,690	7,449	6,364	4,153	2,329	936	480
	6	135	1,898	7,380	10,716	10,222	8,403	6,365	4,467	2,588	1,343	444	182
	7	36	479	2,612	5,097	6,380	5,860	4,321	2,927	1,466	678	180	79
	8	9	123	897	2,378	3,360	3,435	2,757	1,711	790	301	107	34
	9	3	35	327	1,014	1,758	1,922	1,395	950	417	163	39	17
	10	3	13	145	518	998	1,112	846	521	230	94	20	2
	11	2	3	52	201	416	530	422	223	87	36	8	2
	12+	-	1	28	201	447	557	454	238	96	38	12	-
	One parent and one or more children (of any age)	Total	42	186	406	451	655	895	1,249	1,712	1,928	1,999	1,643
2		29	86	111	83	99	162	287	582	881	1,198	1,102	2,251
3		12	62	142	133	143	196	301	434	496	463	348	704
4		1	24	81	108	142	190	270	307	284	205	123	184
5		-	9	45	67	137	127	156	178	142	73	42	44
6		-	3	10	32	69	104	92	94	72	32	16	14
7		-	1	11	10	30	53	66	66	29	16	6	3
8		-	-	4	10	20	29	40	23	15	6	4	-
9		-	1	1	6	11	18	18	15	6	5	1	-
10		-	-	1	1	1	9	9	8	3	1	1	-
11		-	-	-	-	3	4	5	2	-	-	-	-
12+		-	-	-	1	-	3	5	3	-	-	-	-
Man and wife with other persons	Total	302	869	678	494	496	677	931	1,481	1,661	2,035	1,524	1,526
	3	233	709	590	422	413	564	795	1,246	1,406	1,744	1,313	1,332
	4	39	108	75	58	70	90	113	189	196	225	175	150
	5	20	36	11	12	8	18	15	35	49	50	23	30
	6	3	13	1	1	3	4	5	9	4	12	10	8
	7	2	1	1	-	2	-	1	2	6	1	3	5
	8	1	1	-	-	-	-	1	1	-	1	-	-
	9	2	-	-	1	-	-	-	-	-	1	-	-
	10	-	-	-	-	-	-	-	-	-	-	-	1
	11	-	1	-	-	-	-	-	1	-	-	-	-
12+	2	-	-	-	-	-	-	-	-	1	-	-	

Man, wife and one or more children (of any age) with other persons	Total	635	3,047	6,445	7,313	7,480	7,207	6,497	5,576	4,084	3,136	1,877	1,946	
	4	291	956	1,062	727	565	611	879	1,056	1,137	1,051	706	629	
	5	227	1,149	2,124	1,667	1,344	1,222	1,261	1,282	1,053	857	529	475	
	6	83	619	1,804	2,001	1,733	1,499	1,299	1,142	750	563	328	370	
	7	18	211	847	1,528	1,613	1,478	1,156	805	478	343	159	216	
	8	7	77	372	784	1,100	1,016	791	586	333	152	79	115	
	9	3	22	153	372	597	628	509	330	153	88	44	78	
	10	4	10	54	140	303	351	290	196	104	47	20	34	
	11	-	1	15	54	108	189	124	90	38	21	6	15	
	12+	2	2	14	40	117	213	188	89	38	14	6	14	
	One parent and one or more children (of any age) with other persons	Total	45	82	161	224	202	254	349	406	409	420	372	563
		3	23	32	60	46	37	48	88	123	143	185	195	292
		4	9	27	49	61	47	58	90	113	127	123	111	151
5		5	14	31	50	46	59	65	76	67	59	42	71	
6		2	6	10	33	36	36	56	46	35	27	15	29	
7		1	-	3	16	20	26	19	26	19	13	4	10	
8		2	1	3	13	7	10	16	11	10	8	2	5	
9		2	2	3	2	3	9	7	2	5	3	2	2	
10		1	-	1	3	2	6	4	6	3	-	-	1	
11		-	-	-	-	2	1	1	2	-	1	1	2	
12+		-	-	1	-	2	1	3	1	-	1	-	-	
Two family units with or without other persons		Total	182	800	1,361	1,243	1,044	1,232	1,549	2,121	2,273	2,422	1,749	1,816
		4	38	134	108	73	52	70	141	248	319	390	278	334
	5	55	205	231	116	73	112	197	441	530	591	389	319	
	6	46	226	365	235	149	171	277	422	584	616	462	429	
	7	19	122	312	302	225	222	261	350	360	396	297	298	
	8	13	64	191	243	210	196	225	257	220	228	190	212	
	9	5	34	101	150	147	177	173	166	135	117	76	127	
	10	3	10	41	81	98	124	128	123	72	55	35	61	
	11	2	2	7	28	31	60	54	49	26	18	16	19	
	12+	1	3	5	15	59	100	93	55	27	11	6	17	
	Three or more family units with or without other persons	Total	4	7	10	11	16	25	48	67	70	46	23	25
		6	-	1	-	-	-	1	2	3	4	6	1	1
		7	1	1	3	3	2	-	2	10	16	10	3	4
8		-	1	3	-	6	5	6	11	9	8	9	6	
9		1	2	1	3	1	4	3	13	13	5	3	7	
10		1	1	1	2	2	3	6	13	15	8	6	2	
11		-	-	1	1	1	2	11	8	7	5	1	2	
12+		1	1	1	2	4	10	18	9	6	4	-	3	
Two or more persons but not including a family unit	Total	3,763	2,401	1,364	1,212	1,634	2,452	3,391	4,299	4,381	4,509	3,257	3,341	
	2	1,950	1,441	946	919	1,203	1,833	2,452	3,077	3,186	3,265	2,333	2,520	
	3	951	577	268	199	305	449	719	939	912	940	731	644	
	4	490	250	91	65	71	118	147	211	216	227	144	139	
	5	231	76	38	17	28	19	45	33	52	66	39	30	
	6	77	39	7	4	12	14	14	22	9	8	6	2	
	7	29	11	6	1	4	10	2	3	2	1	2	1	
	8	11	5	3	4	3	3	3	6	2	-	1	-	
	9	12	1	1	-	2	3	2	1	-	-	-	-	
	10	5	-	-	-	1	2	2	-	-	-	1	-	
	11	3	1	1	-	-	-	1	-	-	-	-	-	
	12+	4	-	3	3	5	1	4	7	2	2	-	5	
	TOTAL		25,785	63,890	80,053	70,467	64,666	62,565	62,057	63,907	57,286	54,024	36,436	35,925

* See note following Table D in commentary.

**TABLE 11B:- PRIVATE HOUSEHOLDS IN PERMANENT HOUSING UNITS HAVING FEMALE HEADS CLASSIFIED BY TYPE AND NUMBER OF PERSONS
AND BY AGE GROUP OF FEMALE HEAD OF HOUSEHOLD***

Type of Household	No. of Persons	Age Group of Female Head											
		Under 25	25 - 29	30 - 34	35 - 39	40 - 44	45 - 49	50 - 54	55 - 59	60 - 64	65 - 69	70 - 74	75 and over
One person	1	4,706	3,320	2,206	1,826	1,895	2,744	3,863	5,866	8,216	11,984	11,655	15,222
Man and wife	2	413	521	235	90	67	84	112	198	195	205	145	101
Man, wife and one or more children (of any age)	Total	443	1,146	1,325	958	726	559	461	337	208	136	66	57
	3	266	434	234	85	82	71	101	117	115	90	49	45
	4	126	435	463	234	144	125	117	97	57	32	14	10
	5	36	191	371	262	148	109	76	51	27	8	3	1
	6	12	63	171	191	149	100	79	42	7	6	-	-
	7	1	20	61	91	81	60	40	14	1	-	-	1
	8	2	2	12	39	66	35	24	13	1	-	-	-
	9	-	1	5	29	30	23	14	3	-	-	-	-
	10	-	-	4	15	11	11	7	-	-	-	-	-
	11	-	-	3	4	8	16	2	-	-	-	-	-
	12+	-	-	1	8	7	9	1	-	-	-	-	-
One parent and one or more children (of any age)	Total	480	1,159	1,832	2,072	2,691	3,735	5,360	7,156	7,038	6,910	5,500	10,657
	2	263	414	363	326	447	701	1,400	2,768	3,896	4,659	3,989	7,481
	3	149	396	593	550	550	851	1,363	2,072	1,889	1,607	1,176	2,452
	4	55	214	430	477	598	713	1,026	1,186	797	482	257	567
	5	9	90	250	337	449	603	711	638	308	115	66	122
	6	2	33	100	173	279	382	412	281	101	33	10	23
	7	-	10	52	103	168	224	233	118	30	12	2	12
	8	1	2	25	49	84	109	111	55	14	2	-	-
	9	-	-	14	29	47	77	50	28	3	-	-	-
	10	1	-	3	14	34	40	38	6	-	-	-	-
	11	-	-	1	6	23	21	12	2	-	-	-	-
	12+	-	-	1	8	12	14	4	2	-	-	-	-
Man and wife with other persons	Total	56	64	41	35	31	73	130	225	327	433	313	433
	3	34	50	33	34	25	56	103	191	273	369	264	373
	4	14	8	6	1	4	13	19	28	40	45	42	50
	5	5	4	1	-	2	-	2	5	7	15	4	7
	6	1	1	1	-	-	-	2	5	7	3	3	1
	7	-	-	-	-	-	-	1	1	-	1	-	2
	8	-	1	-	-	-	-	1	-	-	-	-	-
	9	1	-	-	-	-	-	1	-	-	-	-	-
	10	1	-	-	-	-	-	-	-	-	-	-	-
	11	-	-	-	-	-	-	-	-	-	-	-	-
	12+	-	-	-	-	-	-	-	-	-	-	-	-

Man, wife and one or more children (of any age) with other persons	Total	64	125	164	146	132	160	255	486	808	1,092	897	1,278	
	4	28	50	30	21	16	33	74	176	295	282	231	260	
	5	17	33	41	41	23	43	72	165	257	378	265	329	
	6	11	16	56	37	33	26	57	81	152	232	199	262	
	7	2	17	24	17	25	23	27	45	63	106	109	193	
	8	4	6	8	16	11	18	17	13	23	57	53	117	
	9	1	3	3	6	14	6	4	5	9	24	22	51	
	10	1	-	2	1	6	4	1	1	6	7	13	31	
	11	-	-	-	4	1	4	-	-	2	4	2	11	
	12+	-	-	-	3	3	3	3	-	1	2	3	24	
	One parent and one or more children (of any age) with other persons	Total	132	246	338	418	549	807	1,181	1,431	1,423	1,322	988	1,815
		3	52	80	73	68	84	147	293	487	655	738	539	1,050
		4	52	85	107	87	134	170	314	421	400	362	299	496
5		21	47	84	92	121	175	228	261	204	147	85	169	
6		6	18	35	93	87	135	149	137	96	47	40	68	
7		1	9	23	39	52	86	92	69	47	17	16	22	
8		-	5	7	18	31	42	60	41	12	6	4	5	
9		-	1	3	12	18	12	24	6	6	3	3	1	
10		-	1	4	5	12	25	11	8	2	-	1	2	
11		-	-	2	4	3	8	3	-	-	1	-	-	
12+		-	-	-	-	7	7	7	1	1	1	1	2	
Two family units with or without other persons		Total	43	77	82	76	99	236	409	614	605	472	280	484
		4	13	13	8	5	5	29	45	90	104	103	44	124
	5	14	20	21	19	20	41	75	138	167	139	77	116	
	6	10	24	19	13	16	51	99	163	149	101	67	104	
	7	2	12	22	19	14	38	78	117	105	59	43	60	
	8	-	4	9	7	15	17	46	53	46	40	33	41	
	9	1	2	-	3	13	23	27	33	13	11	7	20	
	10	-	1	2	7	8	22	19	13	14	14	4	10	
	11	-	-	1	2	3	3	11	3	4	5	3	4	
	12+	3	1	-	1	5	12	9	4	3	-	2	5	
	Three or more family units with or without other persons	Total	1	2	1	1	-	6	11	21	18	8	3	6
		6	-	-	-	-	-	-	1	1	1	2	-	2
		7	1	-	-	-	-	1	2	7	4	2	-	3
8		-	2	1	-	-	-	2	7	1	2	-	1	
9		-	-	-	1	-	1	3	4	4	1	2	-	
10		-	-	-	-	-	1	-	1	3	1	1	-	
11		-	-	-	-	-	1	1	-	2	-	-	-	
12+		-	-	-	-	-	2	2	1	3	-	-	-	
Two or more persons but not including a family unit	Total	5,938	2,459	943	513	622	948	1,583	2,363	3,183	3,855	3,619	5,085	
	2	2,974	1,443	653	363	473	697	1,160	1,774	2,412	3,037	2,854	4,120	
	3	1,590	614	180	99	99	171	299	422	576	612	598	752	
	4	819	269	70	20	31	51	67	102	135	133	121	139	
	5	319	85	29	9	8	13	26	35	37	35	27	41	
	6	141	29	6	7	1	3	10	12	9	13	10	17	
	7	49	10	2	2	2	3	4	7	2	4	3	1	
	8	16	2	-	4	2	1	5	2	-	9	1	2	
	9	7	2	-	2	-	1	1	1	2	2	-	1	
	10	6	-	1	-	1	2	2	-	5	-	1	1	
	11	3	-	-	-	2	-	1	-	1	1	-	1	
	12+	14	5	2	7	3	6	8	8	4	9	4	10	
	Total	12,276	9,119	7,167	6,135	6,812	9,352	13,365	18,697	22,021	26,417	23,466	35,138	

* See note following Table D in commentary.

TABLE 12:- PRIVATE HOUSEHOLDS IN PERMANENT HOUSING UNITS CLASSIFIED BY TYPE AND NUMBER OF PERSONS AND BY SEX AND MARITAL STATUS OF HEAD OF HOUSEHOLD.*

Type of Household	Number of Persons	Total	Male Head				Female Head			
			Total	Single	Married	Widowed	Total	Single	Married	Widowed
One person	1	142,193	68,690	54,190	4,977	9,523	73,503	35,837	3,199	34,467
Man and wife	2	96,001	93,635	50	93,579	6	2,366	13	2,352	1
Man, wife and one or more children (of any age)	Total	381,240	374,818	72	374,734	12	6,422	8	6,412	2
	3	82,255	80,566	45	80,519	2	1,689	6	1,683	-
	4	99,631	97,777	14	97,758	5	1,854	1	1,853	-
	5	81,002	79,719	6	79,711	2	1,283	-	1,283	-
	6	54,963	54,143	4	54,138	1	820	-	819	1
	7	30,485	30,115	-	30,115	-	370	-	369	1
	8	16,096	15,902	2	15,899	1	194	1	193	-
	9	8,145	8,040	1	8,038	1	105	-	105	-
	10	4,550	4,502	-	4,502	-	48	-	48	-
	11	2,015	1,982	-	1,982	-	33	-	33	-
	12+	2,098	2,072	-	2,072	-	26	-	26	-
One parent and one or more children (of any age)	Total	68,956	14,366	15	3,581	10,770	54,590	723	9,609	44,258
	2	33,578	6,871	8	1,301	5,562	26,707	582	2,859	23,266
	3	17,082	3,434	6	916	2,512	13,648	102	2,696	10,850
	4	8,721	1,919	1	625	1,293	6,802	25	1,835	4,942
	5	4,718	1,020	-	350	670	3,698	8	1,126	2,564
	6	2,367	538	-	184	354	1,829	3	541	1,285
	7	1,255	291	-	106	185	964	1	269	694
	8	603	151	-	50	101	452	2	138	312
	9	330	82	-	30	52	248	-	68	180
	10	170	34	-	9	25	136	-	39	97
	11	79	14	-	4	10	65	-	22	43
	12+	53	12	-	6	6	41	-	16	25
Man and wife with other persons	Total	14,835	12,674	606	11,487	581	2,161	337	445	1,379
	3	12,572	10,767	419	9,817	531	1,805	250	365	1,190
	4	1,758	1,488	126	1,320	42	270	61	62	147
	5	359	307	43	259	5	52	15	8	29
	6	97	73	10	61	2	24	7	7	10
	7	29	24	4	20	-	5	1	1	3
	8	7	5	1	4	-	2	1	1	-
	9	6	4	1	3	-	2	1	1	-
	10	2	1	-	-	1	1	1	-	-
	11	2	2	1	1	-	-	-	-	-
	12+	3	3	1	2	-	-	-	-	-

Man, wife and one or more children (of any age) with other persons	Total	60,850	55,243	955	51,934	2,354	5,607	345	1,147	4,115	
	4	11,166	9,670	243	8,902	525	1,496	86	287	1,123	
	5	14,854	13,190	281	12,266	643	1,664	105	307	1,252	
	6	13,353	12,191	194	11,463	534	1,162	78	243	841	
	7	9,503	8,852	99	8,442	311	651	38	152	461	
	8	5,755	5,412	75	5,164	173	343	22	80	241	
	9	3,125	2,977	32	2,855	90	148	10	42	96	
	10	1,626	1,553	18	1,491	44	73	3	16	54	
	11	689	661	7	637	17	28	1	9	18	
	12+	779	737	6	714	17	42	2	11	29	
	One parent and one or more children (of any age) with other persons	Total	14,137	3,487	532	945	2,010	10,650	562	1,918	8,170
		3	5,538	1,272	212	300	760	4,266	260	531	3,475
		4	3,893	966	162	255	549	2,927	162	542	2,223
5		2,219	585	82	172	331	1,634	78	368	1,188	
6		1,242	331	37	110	184	911	32	226	653	
7		630	157	17	52	88	473	18	128	327	
8		319	88	12	31	45	231	8	57	166	
9		131	42	5	13	24	89	2	31	56	
10		98	27	3	6	18	71	-	20	51	
11		31	10	1	3	6	21	-	6	15	
12+		36	9	1	3	5	27	2	9	16	
Two family units with or without other persons		Total	21,269	17,792	49	16,869	874	3,477	54	751	2,672
		4	2,768	2,185	1	2,022	162	583	14	102	467
	5	4,106	3,259	11	3,057	191	847	15	168	664	
	6	4,798	3,982	13	3,766	203	816	8	185	623	
	7	3,733	3,164	12	3,010	142	569	10	116	443	
	8	2,570	2,259	5	2,178	76	311	1	72	238	
	9	1,561	1,408	2	1,357	49	153	1	41	111	
	10	945	831	4	797	30	114	3	39	72	
	11	351	312	-	301	11	39	-	12	27	
	12+	437	392	1	381	10	45	2	16	27	
	Three or more family units with or without other persons	Total	430	352	1	324	27	78	2	24	52
		6	26	19	-	14	5	7	-	2	5
		7	75	55	-	50	5	20	1	6	13
8		80	64	-	58	6	16	1	6	9	
9		72	56	-	53	3	16	-	2	14	
10		67	60	1	54	5	7	-	3	4	
11		43	39	-	38	1	4	-	2	2	
12+		67	59	-	57	2	8	-	3	5	
Two or more persons but not including a family unit	Total	67,115	36,004	32,985	1,299	1,720	31,111	21,959	918	8,234	
	2	47,085	25,125	22,682	1,007	1,436	21,960	14,402	699	6,859	
	3	13,646	7,634	7,203	207	224	6,012	4,800	157	1,055	
	4	4,126	2,169	2,078	47	44	1,957	1,698	36	223	
	5	1,338	674	653	12	9	664	592	14	58	
	6	472	214	200	9	5	258	227	2	29	
	7	161	72	65	6	1	89	84	2	3	
	8	85	41	37	4	-	44	42	1	1	
	9	41	22	20	2	-	19	18	-	1	
	10	30	11	10	1	-	19	16	2	1	
	11	15	6	5	1	-	9	9	-	-	
	12+	116	36	32	3	1	80	71	5	4	
	Total	867,026	677,061	89,455	559,729	27,877	189,965	59,840	26,775	103,350	

* See note following Table D in commentary.

TABLE 13A:- PRIVATE HOUSEHOLDS IN PERMANENT HOUSING UNITS CLASSIFIED BY TYPE AND NUMBER OF PERSONS AND BY NUMBER OF CHILDREN UNDER 5 YEARS OF AGE IN THE HOUSEHOLD.

Type of Household	Number of Persons	Total Households	Children Under 5 in the Household						
			None	1	2	3	4	5+	
One person	1	142,193	142,193	-	-	-	-	-	-
Man and wife	2	96,001	96,001	-	-	-	-	-	-
Man, wife and one or more children (of any age)	Total	381,240	207,007	103,926	56,203	12,401	1,561	142	
	3	82,255	47,272	34,983	-	-	-	-	-
	4	99,631	52,423	19,314	27,894	-	-	-	-
	5	81,002	43,170	19,745	11,680	6,407	-	-	-
	6	54,963	30,499	13,496	7,625	2,598	745	-	-
	7	30,485	16,981	7,634	4,075	1,432	313	50	
	8	16,096	8,783	4,220	2,135	756	174	28	
	9	8,145	4,224	2,160	1,179	455	115	12	
	10	4,550	2,177	1,210	751	304	92	16	
	11	2,015	850	572	365	178	37	13	
	12+	2,098	628	592	499	271	85	23	
One parent and one or more children (of any age)	Total	68,956	64,598	3,073	1,052	206	25	2	
	2	33,578	32,641	937	-	-	-	-	-
	3	17,082	16,007	627	448	-	-	-	-
	4	8,721	7,853	548	224	96	-	-	-
	5	4,718	4,123	391	150	43	11	-	-
	6	2,367	2,035	222	87	20	3	-	-
	7	1,255	1,027	150	61	14	3	-	-
	8	603	474	85	26	14	4	-	-
	9	330	238	52	29	9	1	1	
	10	170	120	34	11	3	2	-	-
	11	79	48	18	9	4	-	-	-
	12+	53	32	9	7	3	1	1	
Man and wife with other persons	Total	14,835	14,607	198	27	2	1	-	-
	3	12,572	12,462	110	-	-	-	-	-
	4	1,758	1,692	50	16	-	-	-	-
	5	359	322	28	8	1	-	-	-
	6	97	86	8	3	-	-	-	-
	7	29	26	2	-	1	-	-	-
	8	7	7	-	-	-	-	-	-
	9	6	5	-	-	-	1	-	-
	10	2	2	-	-	-	-	-	-
	11	2	2	-	-	-	-	-	-
	12+	3	3	-	-	-	-	-	-

Man, wife and one or more children (of any age) with other persons	Total	60,850	31,427	17,521	9,047	2,471	341	43	
	4	11,166	6,572	4,558	36	-	-	-	
	5	14,854	7,861	3,446	3,524	23	-	-	
	6	13,353	6,799	3,351	2,175	1,020	8	-	
	7	9,503	4,703	2,637	1,403	615	143	2	
	8	5,755	2,784	1,681	850	355	70	15	
	9	3,125	1,445	920	506	193	54	7	
	10	1,626	743	491	245	116	25	6	
	11	689	283	217	111	57	15	6	
	12+	779	237	220	197	92	26	7	
	One parent and one or more children (of any age) with other persons	Total	14,137	11,836	1,781	432	75	12	1
		3	5,538	4,993	545	-	-	-	-
		4	3,893	3,309	418	166	-	-	-
5		2,219	1,771	319	103	26	-	-	
6		1,242	923	225	73	19	2	-	
7		630	454	126	35	12	3	-	
8		319	218	69	21	10	1	-	
9		131	81	30	14	2	4	-	
10		98	54	30	13	-	1	-	
11		31	15	9	3	3	1	-	
12+		36	18	10	4	3	-	1	
Two family units with or without other persons		Total	21,269	8,412	7,717	3,859	1,064	174	43
		4	2,768	2,516	244	8	-	-	-
	5	4,106	1,748	2,256	102	-	-	-	
	6	4,798	1,570	1,807	1,372	48	1	-	
	7	3,733	1,096	1,308	944	375	9	1	
	8	2,570	695	933	600	274	65	3	
	9	1,561	399	567	375	172	39	9	
	10	945	238	325	233	100	32	17	
	11	351	75	125	97	35	14	5	
	12+	437	75	152	128	60	14	8	
	Three or more family units with or without other persons	Total	430	97	123	114	77	14	5
		6	26	22	4	-	-	-	-
		7	75	24	39	10	2	-	-
8		80	17	34	26	3	-	-	
9		72	10	20	24	17	1	-	
10		67	11	14	19	20	3	-	
11		43	5	7	15	12	3	1	
12+		67	8	5	20	23	7	4	
Two or more persons but not including a family unit	Total	67,115	66,825	248	35	6	1	-	
	2	47,085	47,041	44	-	-	-	-	
	3	13,646	13,551	89	6	-	-	-	
	4	4,126	4,059	60	7	-	-	-	
	5	1,338	1,304	21	13	-	-	-	
	6	472	447	19	4	2	-	-	
	7	161	148	9	2	2	-	-	
	8	85	82	1	1	1	-	-	
	9	41	37	4	-	-	-	-	
	10	30	28	1	-	1	-	-	
	11	15	13	-	1	-	1	-	
	12+	116	115	-	1	-	-	-	
	Total	867,026	643,003	134,587	70,769	16,302	2,129	236	

TABLE 13B:-- PRIVATE HOUSEHOLDS IN PERMANENT HOUSING UNITS CLASSIFIED BY TYPE AND NUMBER OF PERSONS AND BY NUMBER OF CHILDREN UNDER 15 YEARS OF AGE IN THE HOUSEHOLD.

Type of Household	Number of Persons	Total Households	Children Under 15 in the Household											
			None	1	2	3	4	5	6	7	8	9+		
One person	1	142,193	142,193	-	-	-	-	-	-	-	-	-	-	-
Man and wife	2	96,001	96,001	-	-	-	-	-	-	-	-	-	-	-
Man, wife and one or more children (of any age)	Total	381,240	77,605	79,130	90,818	66,694	37,705	16,923	7,278	2,967	1,287	833		
	3	82,255	35,464	46,791	-	-	-	-	-	-	-	-	-	
	4	99,631	22,950	9,780	66,901	-	-	-	-	-	-	-	-	
	5	81,002	11,637	10,504	8,006	50,855	-	-	-	-	-	-	-	
	6	54,963	5,044	6,969	7,807	6,241	28,902	-	-	-	-	-	-	
	7	30,485	1,763	3,285	4,592	4,772	3,648	12,425	-	-	-	-	-	
	8	16,096	530	1,249	2,211	2,712	2,556	1,828	5,010	-	-	-	-	
	9	8,145	169	367	871	1,296	1,365	1,252	927	1,898	-	-	-	
	10	4,550	39	139	335	564	762	772	660	463	816	-	-	
	11	2,015	7	30	74	168	291	373	345	269	160	298	-	
	12+	2,098	2	16	21	86	181	273	336	337	311	535	-	
One parent and one or more children (of any age)	Total	68,956	51,546	7,409	4,834	2,749	1,422	546	275	110	45	20		
	2	33,578	30,921	2,657	-	-	-	-	-	-	-	-	-	
	3	17,082	13,052	1,488	2,542	-	-	-	-	-	-	-	-	
	4	8,721	4,944	1,463	705	1,609	-	-	-	-	-	-	-	
	5	4,718	1,793	984	676	397	868	-	-	-	-	-	-	
	6	2,367	571	489	484	322	187	314	-	-	-	-	-	
	7	1,255	188	217	245	215	147	85	158	-	-	-	-	
	8	603	55	75	109	106	104	60	41	53	-	-	-	
	9	330	17	26	45	62	60	35	36	22	27	-	-	
	10	170	4	9	22	27	36	24	22	14	6	6	-	
	11	79	1	-	3	9	16	17	14	8	6	5	-	
	12+	53	-	1	3	2	4	11	4	13	6	9	-	
Man and wife with other persons	Total	14,835	13,928	748	125	23	8	2	-	1	-	-	-	
	3	12,572	12,041	531	-	-	-	-	-	-	-	-	-	
	4	1,758	1,519	159	80	-	-	-	-	-	-	-	-	
	5	359	267	41	35	16	-	-	-	-	-	-	-	
	6	97	64	14	8	4	7	-	-	-	-	-	-	
	7	29	22	2	2	1	1	1	-	-	-	-	-	
	8	7	4	1	-	1	-	1	-	-	-	-	-	
	9	6	4	-	-	1	-	-	-	1	-	-	-	
	10	2	2	-	-	-	-	-	-	-	-	-	-	
	11	2	2	-	-	-	-	-	-	-	-	-	-	
	12+	3	3	-	-	-	-	-	-	-	-	-	-	

Man, wife and one or more children (of any age) with other persons	Total	60,850	10,204	13,060	14,272	10,816	6,756	3,305	1,449	589	225	174	
	4	11,166	4,218	6,784	164	-	-	-	-	-	-	-	
	5	14,854	3,082	2,405	9,107	260	-	-	-	-	-	-	
	6	13,353	1,731	1,852	2,208	7,297	265	-	-	-	-	-	
	7	9,503	755	1,109	1,377	1,582	4,520	160	-	-	-	-	
	8	5,755	261	573	800	869	1,029	2,163	60	-	-	-	
	9	3,125	108	219	377	471	472	499	952	27	-	-	
	10	1,626	38	88	155	227	278	254	216	360	10	-	
	11	689	9	21	49	70	108	116	101	92	112	11	
	12+	779	2	9	35	40	84	113	120	110	103	163	
	One parent and one or more children (of any age) with other persons	Total	14,137	7,879	3,136	1,607	829	410	158	76	29	10	3
		3	5,538	4,156	1,363	19	-	-	-	-	-	-	-
		4	3,893	2,279	787	812	15	-	-	-	-	-	-
5		2,219	910	486	359	454	10	-	-	-	-	-	
6		1,242	344	290	201	164	238	5	-	-	-	-	
7		630	132	127	125	91	65	89	1	-	-	-	
8		319	35	61	57	52	43	32	38	1	-	-	
9		131	15	11	22	27	18	15	10	13	-	-	
10		98	7	8	9	20	24	8	10	7	5	-	
11		31	-	2	1	3	6	5	9	2	3	-	
12+		36	1	1	2	3	6	4	8	6	2	3	
Two family units with or without other persons		Total	21,269	4,308	5,669	5,085	3,079	1,676	853	382	115	56	46
		4	2,768	2,286	464	18	-	-	-	-	-	-	-
	5	4,106	1,053	2,658	374	21	-	-	-	-	-	-	
	6	4,798	567	1,326	2,664	223	18	-	-	-	-	-	
	7	3,733	262	657	1,011	1,685	112	6	-	-	-	-	
	8	2,570	87	353	545	579	929	71	6	-	-	-	
	9	1,561	32	144	282	299	306	461	36	1	-	-	
	10	945	18	47	133	165	181	182	207	11	1	-	
	11	351	2	15	39	65	61	59	50	56	4	-	
	12+	437	1	5	19	42	69	74	83	47	51	46	
	Three or more family units with or without other persons	Total	430	51	80	102	76	63	29	18	5	2	4
		6	26	20	6	-	-	-	-	-	-	-	-
		7	75	17	34	18	6	-	-	-	-	-	-
8		80	7	24	35	13	1	-	-	-	-	-	
9		72	1	7	26	28	9	1	-	-	-	-	
10		67	2	8	8	20	21	8	-	-	-	-	
11		43	2	1	8	4	19	7	2	-	-	-	
12+		67	2	-	7	5	13	13	16	5	2	4	
Two or more persons but not including a family unit	Total	67,115	65,640	1,078	229	84	47	13	7	-	2	15	
	2	47,085	46,609	464	12	-	-	-	-	-	-	-	
	3	13,646	13,236	331	69	10	-	-	-	-	-	-	
	4	4,126	3,856	165	75	26	4	-	-	-	-	-	
	5	1,338	1,199	65	36	17	19	2	-	-	-	-	
	6	472	392	33	21	12	12	2	-	-	-	-	
	7	161	113	12	14	10	6	2	4	-	-	-	
	8	85	70	3	-	6	3	1	2	-	-	-	
	9	41	33	-	2	2	1	3	-	-	-	-	
	10	30	27	-	-	-	1	1	-	-	-	1	
	11	15	9	2	-	-	-	2	1	-	-	1	
	12+	116	96	3	-	1	1	-	-	-	2	13	
	Total	867,026	469,355	110,310	117,072	84,350	48,087	21,829	9,485	3,816	1,627	1,095	

**TABLE 14:- PRIVATE HOUSEHOLDS IN PERMANENT HOUSING UNITS CLASSIFIED BY TYPE AND
NUMBER OF PERSONS AGED 65 YEARS AND OVER IN THE HOUSEHOLD**

Type of Household	Number of Persons	Total Households	Persons Aged 65 and Over in the Household					
			None	1	2	3	4	5 or more
One person	1	142,193	82,070	60,123	-	-	-	-
Man and wife	2	96,001	57,355	14,936	23,710	-	-	-
Man, wife and one or more children (of any age)	Total	381,240	346,990	21,999	12,236	15	-	-
	3	82,255	64,402	9,259	8,587	7	-	-
	4	99,631	91,090	5,821	2,713	7	-	-
	5	81,002	77,081	3,241	680	-	-	-
	6	54,963	52,924	1,838	201	-	-	-
	7	30,485	29,509	941	34	1	-	-
	8	16,096	15,626	458	12	-	-	-
	9	8,145	7,921	216	8	-	-	-
	10	4,550	4,429	121	-	-	-	-
	11	2,015	1,967	47	1	-	-	-
	12+	2,098	2,041	57	-	-	-	-
One parent and one or more children (of any age)	Total	68,956	39,010	29,731	190	21	4	-
	2	33,578	12,884	20,599	95	-	-	-
	3	17,082	10,326	6,677	68	11	-	-
	4	8,721	6,899	1,795	22	3	2	-
	5	4,718	4,250	457	3	7	1	-
	6	2,367	2,236	129	1	-	1	-
	7	1,255	1,202	52	1	-	-	-
	8	603	591	12	-	-	-	-
	9	330	324	6	-	-	-	-
	10	170	167	3	-	-	-	-
	11	79	78	1	-	-	-	-
	12+	53	53	-	-	-	-	-
Man and wife with other persons	Total	14,835	5,203	5,518	2,743	1,284	82	5
	3	12,572	4,313	4,892	2,244	1,123	-	-
	4	1,758	674	482	407	130	65	-
	5	359	151	101	66	25	13	3
	6	97	40	29	18	6	3	1
	7	29	11	9	7	-	1	1
	8	7	6	1	-	-	-	-
	9	6	4	1	1	-	-	-
	10	2	1	1	-	-	-	-
	11	2	1	1	-	-	-	-
	12+	3	2	1	-	-	-	-

Man, wife and one or more children (of any age) with other persons	Total	60,850	25,844	30,942	3,342	689	31	2	
	4	11,166	4,886	4,867	1,021	392	-	-	
	5	14,854	6,512	7,423	755	149	15	-	
	6	13,353	5,625	7,066	578	80	4	-	
	7	9,503	3,800	5,257	410	29	7	-	
	8	5,755	2,324	3,145	272	14	-	-	
	9	3,125	1,242	1,704	164	13	1	1	
	10	1,626	749	775	92	6	4	-	
	11	689	324	341	21	3	-	-	
	12+	779	382	364	29	3	-	1	
	One parent and one or more children (of any age) with other persons	Total	14,137	6,127	6,268	1,628	99	12	3
		3	5,538	1,857	2,732	942	7	-	-
		4	3,893	1,674	1,723	442	54	-	-
5		2,219	1,133	916	141	22	7	-	
6		1,242	698	466	61	13	4	-	
7		630	372	232	23	2	-	1	
8		319	195	112	10	1	1	-	
9		131	89	37	5	-	-	-	
10		98	66	30	2	-	-	-	
11		31	21	10	-	-	-	-	
12+		36	22	10	2	-	-	2	
Two family units with or without other persons		Total	21,269	9,464	5,967	5,523	293	20	2
		4	2,768	1,074	898	773	18	5	-
	5	4,106	1,806	1,267	991	37	4	1	
	6	4,798	2,061	1,449	1,231	55	2	-	
	7	3,733	1,615	1,008	1,050	56	4	-	
	8	2,570	1,114	653	739	60	4	-	
	9	1,561	764	347	415	35	-	-	
	10	945	506	221	195	21	1	1	
	11	351	209	63	72	7	-	-	
	12+	437	315	61	57	4	-	-	
	Three or more family units with or without other persons	Total	430	262	99	63	3	3	-
		6	26	11	9	5	1	-	-
		7	75	41	23	10	-	1	-
8		80	41	22	17	-	-	-	
9		72	43	16	12	1	-	-	
10		67	41	11	13	-	2	-	
11		43	31	8	4	-	-	-	
12+		67	54	10	2	1	-	-	
Two or more persons but not including a family unit	Total	67,115	37,712	14,594	12,456	1,992	258	103	
	2	47,085	25,262	11,579	10,244	-	-	-	
	3	13,646	7,966	2,269	1,749	1,662	-	-	
	4	4,126	2,872	466	337	253	198	-	
	5	1,338	990	170	54	49	44	31	
	6	472	354	66	33	9	4	6	
	7	161	128	18	11	1	1	2	
	8	85	55	10	8	8	2	2	
	9	41	31	3	4	1	-	2	
	10	30	17	3	3	-	3	4	
	11	15	8	1	1	2	1	2	
	12+	116	29	9	12	7	5	54	
	Total	867,026	610,037	190,177	61,891	4,396	410	115	

TABLE 15:- PRIVATE HOUSEHOLDS, NUMBER OF PERSONS, NUMBER OF CHILDREN UNDER 5, NUMBER OF CHILDREN UNDER 15 AND NUMBER OF PERSONS AGED 65 AND OVER IN TEMPORARY HOUSING UNITS CLASSIFIED BY TYPE AND NUMBER OF PERSONS

Type of Household	Number of Persons	Total Households	Total Persons	Children Under 5 Years of Age	Children Under 15 Years of Age	Persons Aged 65 and over
One person	1	2,789	2,789	-	-	1,204
Man and wife	2	1,827	3,654	-	-	329
Man, wife and one or more children (of any age)	Total	3,913	16,993	5,040	8,294	78
	3	1,691	5,073	1,486	1,599	53
	4	1,102	4,408	1,613	2,105	10
	5	459	2,295	709	1,244	9
	6	247	1,482	405	862	2
	7	130	910	249	585	-
	8	90	720	175	466	1
	9	53	477	87	312	-
	10	49	490	94	337	1
	11	31	341	60	233	-
	12+	61	797	162	551	2
One parent and one or more children (of any age)	Total	414	1,286	207	545	87
	2	216	432	52	86	72
	3	89	267	49	99	14
	4	49	196	39	101	1
	5	26	130	12	78	-
	6	10	60	20	47	-
	7	8	56	15	37	-
	8	8	64	14	48	-
	9	4	36	3	23	-
	10	1	10	-	3	-
	11	2	22	2	14	-
	12+	1	13	1	9	-
Man and wife with other persons	Total	52	160	3	7	30
	3	49	147	3	7	26
	4	2	8	-	-	4
	5	1	5	-	-	-
	6	-	-	-	-	-
	7	-	-	-	-	-
	8	-	-	-	-	-
	9	-	-	-	-	-
	10	-	-	-	-	-
	11	-	-	-	-	-
	12+	-	-	-	-	-

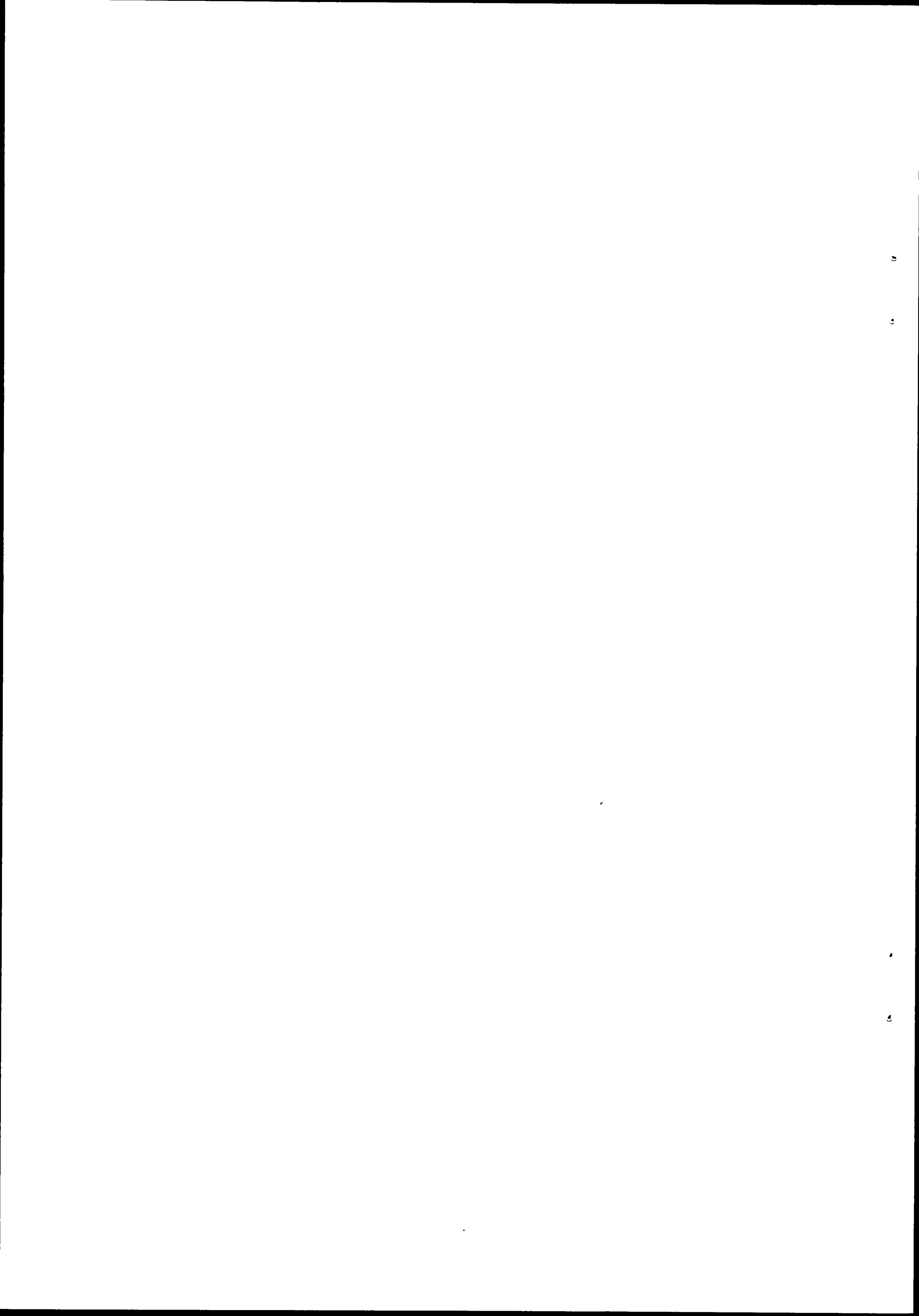
Man, wife and one or more children (of any age) with other persons	Total	140	852	150	337	48	
	4	43	172	29	37	21	
	5	30	150	27	46	10	
	6	27	162	33	69	9	
	7	17	119	18	44	5	
	8	9	72	14	32	-	
	9	1	9	3	6	1	
	10	2	20	2	14	-	
	11	2	22	1	12	1	
	12+	9	126	23	77	1	
	One parent and one or more children (of any age) with other persons	Total	60	226	31	67	25
		3	33	99	14	22	15
4		15	60	10	20	5	
5		6	30	1	9	5	
6		5	30	4	12	-	
7		1	7	2	4	-	
8		-	-	-	-	-	
9		-	-	-	-	-	
10		-	-	-	-	-	
11		-	-	-	-	-	
12+		-	-	-	-	-	
Two family units with or without other persons		Total	35	241	31	74	18
	4	8	32	-	1	9	
	5	9	45	6	8	1	
	6	-	-	-	-	-	
	7	3	21	1	9	2	
	8	7	56	14	25	3	
	9	5	45	5	17	1	
	10	-	-	-	-	-	
	11	-	-	-	-	-	
	12+	3	42	5	14	2	
	Three or more family units with or without other persons	Total	-	-	-	-	-
		6	-	-	-	-	-
7		-	-	-	-	-	
8		-	-	-	-	-	
9		-	-	-	-	-	
10		-	-	-	-	-	
12+		-	-	-	-	-	
Two or more persons but not including a family unit	Total	403	1,070	5	27	400	
	2	318	636	-	3	235	
	3	60	180	3	9	50	
	4	17	68	-	6	5	
	5	5	25	1	4	-	
	6	-	-	-	-	-	
	7	1	7	-	2	-	
	8	-	-	-	-	-	
	9	-	-	-	-	-	
	10	1	10	-	-	5	
	11	-	-	-	-	-	
	12+	1	144	1	3	105	
Total		9,633	27,271	5,467	9,351	2,219	

TABLE 16A:- PRIVATE HOUSEHOLDS IN TEMPORARY HOUSING UNITS IN EACH PROVINCE, COUNTY AND COUNTY BOROUGH CLASSIFIED BY TYPE.

Province, County or County Borough	Total	Type of Household									
		One person	Man and Wife	Man, wife and one or more children (of any age)	One parent and one or more children (of any age)	Man and wife with other persons	Man, wife and one or more children (of any age) with other persons	One parent and one or more children (of any age) with other persons	Two family units with or without other persons	Three or more family units with or without other persons	Two or more persons but not including a family unit
Total	9,633	2,789	1,827	3,913	414	52	140	60	35	-	403
Leinster	4,369	1,049	951	1,897	207	25	61	33	15	-	131
Carlow	179	35	44	82	10	2	2	2	-	-	2
Dublin City and County	1,161	233	242	542	59	6	20	10	1	-	48
<i>Dublin County Borough</i>	318	69	47	158	17	2	10	2	-	-	13
<i>Dun Laoghaire Borough</i>	17	5	1	7	1	-	-	-	-	-	3
<i>Dublin</i>	826	159	194	377	41	4	10	8	1	-	32
Kildare	560	96	117	294	30	2	5	6	2	-	8
Kilkenny	306	114	54	101	16	1	7	1	2	-	10
Laoighis	180	50	32	81	9	2	1	-	1	-	4
Longford	135	55	17	49	5	-	1	-	1	-	7
Louth	238	56	57	95	14	-	6	-	2	-	8
Meath	318	75	89	128	12	1	4	2	2	-	5
Offaly	265	90	55	93	9	3	3	1	1	-	10
Westmeath	169	54	27	68	7	2	2	2	1	-	6
Wexford	519	88	131	246	19	5	7	7	1	-	15
Wicklow	339	103	86	118	17	1	3	2	1	-	8
Munster	2,189	613	393	935	91	12	41	8	10	-	86
Clare	120	27	15	59	10	-	-	-	-	-	9
Cork City and County	695	208	140	266	33	5	10	3	2	-	28
<i>Cork County Borough</i>	35	9	5	14	2	-	2	1	-	-	2
<i>Cork</i>	660	199	135	252	31	5	8	2	2	-	26
Kerry	371	130	50	150	12	2	9	2	1	-	15
Limerick City and County	394	70	83	206	10	1	10	1	1	-	12
<i>Limerick County Borough</i>	27	4	3	14	2	1	1	-	-	-	2
<i>Limerick</i>	367	66	80	192	8	-	9	1	1	-	10
Tipperary N.R.	200	61	34	79	10	1	6	-	4	-	5
Tipperary S.R.	206	57	34	101	8	-	1	-	1	-	4
Waterford City and County	203	60	37	74	8	3	5	2	1	-	13
<i>Waterford County Borough</i>	4	1	-	1	-	-	1	-	-	-	1
<i>Waterford</i>	199	59	37	73	8	3	4	2	1	-	12
Connacht	1,741	634	243	613	72	12	27	11	7	-	122
Galway	732	236	101	296	27	7	12	6	2	-	45
Leitrim	145	66	18	36	6	1	4	1	1	-	12
Mayo	484	198	58	150	23	3	4	1	-	-	47
Roscommon	193	58	38	75	8	-	5	-	3	-	6
Sligo	187	76	28	56	8	1	2	3	1	-	12
Ulster (part of)	1,334	493	240	468	44	3	11	8	3	-	64
Cavan	242	124	31	51	14	1	3	3	-	-	15
Donegal	946	297	178	383	28	2	7	4	3	-	44
Monaghan	146	72	31	34	2	-	1	1	-	-	5

**TABLE 16B:- PERSONS IN PRIVATE HOUSEHOLDS IN TEMPORARY HOUSING UNITS IN EACH PROVINCE,
COUNTY AND COUNTY BOROUGH CLASSIFIED BY TYPE .**

Province, County or County Borough	Total	Type of Household									
		One Person	Man and Wife	Man, wife and one or more children (of any age)	One parent and one or more children (of any age)	Man and wife with other persons	Man, wife and one or more children (of any age) with other persons	One parent and one or more children (of any age) with other persons	Two family units with or without other persons	Three or more family units with or without other persons	Two or more persons but not including a family unit
Total	27,271	2,789	3,654	16,993	1,286	160	852	226	241	-	1,070
Leinster	12,910	1,049	1,902	8,170	657	77	378	125	95	-	457
Carlow	487	35	88	306	30	6	8	10	-	-	4
Dublin City and County	3,952	233	484	2,695	209	20	143	38	8	-	122
Dublin County Borough	1,169	69	94	804	69	8	75	10	-	-	40
Dun Laoighaire Borough	60	5	2	41	6	-	-	-	-	-	6
Dublin	2,723	159	388	1,850	134	12	68	28	8	-	76
Kildare	1,637	96	234	1,129	93	6	28	25	9	-	17
Kilkenny	780	114	108	418	47	3	45	3	18	-	24
Laoighis	525	50	64	346	38	6	6	-	7	-	8
Longford	370	55	34	230	24	-	4	-	5	-	18
Louth	639	56	114	368	40	-	32	-	12	-	17
Meath	883	75	178	535	32	3	28	8	13	-	11
Offaly	689	90	110	404	21	9	21	4	5	-	25
Westmeath	615	54	54	295	22	6	11	7	9	-	157
Wexford	1,503	88	262	983	54	15	36	24	5	-	36
Wicklow	830	103	172	461	47	3	16	6	4	-	18
Munster	6,193	613	786	3,914	286	36	244	33	73	-	208
Clare	375	27	30	264	32	-	-	-	-	-	22
Cork City and County	1,853	208	280	1,084	105	15	67	15	9	-	70
Cork County Borough	115	9	10	69	7	-	12	3	-	-	5
Cork	1,738	199	270	1,015	98	15	55	12	9	-	65
Kerry	993	130	100	624	31	6	51	6	7	-	38
Limerick City and County	1,266	70	166	893	30	3	53	5	16	-	30
Limerick County Borough	121	4	6	91	5	3	8	-	-	-	4
Limerick	1,145	66	160	802	25	-	45	5	16	-	26
Tipperary N.R.	597	61	68	345	40	3	42	-	28	-	10
Tipperary S.R.	610	57	68	438	26	-	4	-	9	-	8
Waterford City and County	499	60	74	266	22	9	27	7	4	-	30
Waterford County Borough	14	1	-	3	-	-	8	-	-	-	2
Waterford	485	59	74	263	22	9	19	7	4	-	28
Connacht	4,822	634	486	2,921	212	38	163	41	60	-	267
Galway	2,227	236	202	1,467	85	23	75	22	16	-	101
Leitrim	347	66	36	173	15	3	16	3	9	-	26
Mayo	1,184	198	116	658	63	9	34	4	-	-	102
Roscommon	601	58	76	380	24	-	28	-	23	-	12
Sligo	463	76	56	243	25	3	10	12	12	-	26
Ulster (part of)	3,346	493	480	1,988	131	9	67	27	13	-	138
Cavan	500	124	62	207	43	3	18	11	-	-	32
Donegal	2,509	297	356	1,609	83	6	37	13	13	-	95
Monaghan	337	72	62	172	5	-	12	3	-	-	11



TABLES

Part II

FAMILY UNITS

*The statistics contained in Part II are of an experimental nature
and users are therefore advised to read carefully the explanatory notes
at the front of this Volume.*

**HOUSEHOLDS, CLASSIFIED BY POSITION IN FAMILY UNIT AND BY AGE, SEX AND MARITAL STATUS;
CLASSIFIED BY AGE, SEX AND MARITAL STATUS**

Category of Population		Age and Sex					
		20-24		25-29		30-34	
		Males	Females	Males	Females	Males	Females
A. Population in private households (A = B + I)	Total	131,013	125,804	118,563	115,015	110,266	104,822
	Single	106,536	82,406	50,243	30,950	25,751	13,920
	Married	24,458	43,280	68,245	83,768	84,354	90,273
	Widowed	19	118	75	297	161	629
B. Population in family households (B = C + H)	Total	116,999	107,243	107,517	104,699	102,890	99,732
	Single	92,777	64,078	39,976	21,035	19,353	9,241
	Married	24,212	43,071	67,487	83,402	83,421	89,926
	Widowed	10	94	54	262	116	565
C. Members of family units (C = D + E + F + G)	Total	111,752	102,235	104,230	102,342	100,885	98,365
	Single	88,007	59,478	37,336	19,099	17,898	8,183
	Married	23,741	42,682	66,864	83,016	82,895	89,655
	Widowed	4	75	30	227	92	527
D. Persons enumerated as husbands and wives or couples	Total	23,657	41,822	66,574	81,164	82,305	87,313
	Single	33	65	59	62	30	17
	Married	23,624	41,756	66,515	81,102	82,272	87,294
	Widowed	-	1	-	-	3	2
E. Persons enumerated as lone parents	Total	128	1,246	385	2,414	717	3,048
	Single	7	246	6	273	5	162
	Married	117	926	349	1,914	623	2,361
	Widowed	4	74	30	227	89	525
F. Children (of any age) enumerated with both parents	Total	69,224	46,835	24,880	12,463	9,000	4,014
	Single	69,224	46,835	24,880	12,463	9,000	4,014
	Married	-	-	-	-	-	-
	Widowed	-	-	-	-	-	-
G. Children (of any age) enumerated with a lone parent	Total	18,743	12,332	12,391	6,301	8,863	3,990
	Single	18,743	12,332	12,391	6,301	8,863	3,990
	Married	-	-	-	-	-	-
	Widowed	-	-	-	-	-	-
H. Other persons in family households	Total	5,247	5,008	3,287	2,357	2,005	1,367
	Single	4,770	4,600	2,640	1,936	1,455	1,058
	Married	471	389	623	386	526	271
	Widowed	6	19	24	35	24	38
I. Population in non-family households (I = J + K)	Total	14,014	18,561	11,046	10,316	7,376	5,090
	Single	13,759	18,328	10,267	9,915	6,398	4,679
	Married	246	209	758	366	933	347
	Widowed	9	24	21	35	45	64
J. One-person households	Total	3,646	3,965	4,626	3,333	3,930	2,217
	Single	3,510	3,886	4,155	3,169	3,353	2,025
	Married	134	67	456	146	546	150
	Widowed	2	12	15	18	31	42
K. Members of multi-person households	Total	10,368	14,596	6,420	6,983	3,446	2,873
	Single	10,249	14,442	6,112	6,746	3,045	2,654
	Married	112	142	302	220	387	197
	Widowed	7	12	6	17	14	22
L. Population in non-private households	Total	4,795	4,659	3,026	2,822	2,483	2,545
	Single	4,347	4,068	2,292	1,880	1,625	1,623
	Married	447	587	731	934	854	914
	Widowed	1	4	3	8	4	8

TABLE 1 (Contd.): - POPULATION IN PRIVATE HOUSEHOLDS, DISTINGUISHING FAMILY AND NON-FAMILY AND POPULATION IN NON-PRIVATE HOUSEHOLDS

Category of Population		Age and Sex					
		35-39		40-44		45-49	
		Males	Females	Males	Females	Males	Females
A. Population in private households (A = B + I)	Total	89,558	84,421	79,462	75,321	75,405	72,340
	Single	17,389	8,792	16,301	8,182	17,260	9,332
	Married	71,904	74,558	62,662	65,150	57,306	58,869
	Widowed	265	1,071	499	1,989	839	4,139
B. Population in family households (B = C + H)	Total	83,157	80,748	71,465	71,057	64,693	66,111
	Single	11,786	5,494	9,084	4,418	7,387	4,119
	Married	71,158	74,291	61,961	64,830	56,611	58,450
	Widowed	213	963	420	1,809	695	3,542
C. Members of family units (C = D + E + F + G)	Total	81,533	79,815	70,022	70,196	62,808	64,763
	Single	10,616	4,787	7,948	3,833	5,772	3,143
	Married	70,727	74,106	61,674	64,612	56,382	58,223
	Widowed	190	922	400	1,751	654	3,397
D. Persons enumerated as husbands and wives or couples	Total	70,130	71,919	61,111	62,679	55,809	56,620
	Single	15	16	15	7	7	4
	Married	70,112	71,902	61,092	62,672	55,800	56,616
	Widowed	3	1	4	-	2	-
E. Persons enumerated as lone parents	Total	808	3,227	981	3,770	1,237	5,075
	Single	6	102	3	79	3	71
	Married	615	2,204	582	1,940	582	1,607
	Widowed	187	921	396	1,751	652	3,397
F. Children (of any age) enumerated with both parents	Total	3,946	1,653	1,965	903	936	460
	Single	3,946	1,653	1,965	903	936	460
	Married	-	-	-	-	-	-
	Widowed	-	-	-	-	-	-
G. Children (of any age) enumerated with a lone parent	Total	6,649	3,016	5,965	2,844	4,826	2,608
	Single	6,649	3,016	5,965	2,844	4,826	2,608
	Married	-	-	-	-	-	-
	Widowed	-	-	-	-	-	-
H. Other persons in family households	Total	1,624	933	1,443	861	1,885	1,348
	Single	1,170	707	1,136	585	1,615	976
	Married	431	185	287	218	229	227
	Widowed	23	41	20	58	41	145
I. Population in non-family households (I = J + K)	Total	6,401	3,673	7,997	4,264	10,712	6,229
	Single	5,603	3,298	7,217	3,764	9,873	5,213
	Married	746	267	701	320	695	419
	Widowed	52	108	79	180	144	597
J. One-person households	Total	3,449	1,844	4,305	1,909	5,523	2,766
	Single	3,010	1,639	3,848	1,656	5,037	2,158
	Married	408	133	412	143	386	219
	Widowed	31	72	45	110	100	389
K. Members of multi-person households	Total	2,952	1,829	3,692	2,355	5,189	3,463
	Single	2,593	1,659	3,369	2,108	4,836	3,055
	Married	338	134	289	177	309	200
	Widowed	21	36	34	70	44	208
L. Population in non-private households	Total	2,199	2,300	2,337	2,287	2,369	2,327
	Single	1,397	1,597	1,558	1,691	1,586	1,724
	Married	793	690	763	574	753	545
	Widowed	9	13	16	22	30	58

**HOUSEHOLDS, CLASSIFIED BY POSITION IN FAMILY UNIT AND BY AGE, SEX AND MARITAL STATUS;
CLASSIFIED BY AGE, SEX AND MARITAL STATUS**

Category of Population		Age and Sex					
		50-54		55-59		60-64	
		Males	Females	Males	Females	Males	Females
A. Population in private households (A = B + I)	Total	73,091	73,466	73,574	74,838	65,312	66,956
	Single	18,198	10,614	18,394	11,681	16,370	11,745
	Married	53,257	55,386	52,411	50,458	44,948	37,904
	Widowed	1,636	7,466	2,769	12,699	3,994	17,307
B. Population in family households (B = C + H)	Total	59,407	64,193	57,631	61,648	49,580	50,024
	Single	5,591	3,308	4,021	2,585	2,708	1,937
	Married	52,566	54,789	51,615	49,671	44,208	37,019
	Widowed	1,250	6,096	1,995	9,392	2,664	11,068
C. Members of family units (C = D + E + F + G)	Total	57,095	62,332	54,858	58,563	46,518	45,467
	Single	3,607	2,147	1,730	1,117	517	431
	Married	52,358	54,505	51,415	49,309	43,984	36,653
	Widowed	1,130	5,680	1,713	8,137	2,017	8,383
D. Persons enumerated as husbands and wives or couples	Total	51,799	53,014	50,886	48,139	43,544	35,964
	Single	4	5	1	1	2	2
	Married	51,791	53,006	50,880	48,138	43,538	35,958
	Widowed	4	3	5	-	4	4
E. Persons enumerated as lone parents	Total	1,698	7,234	2,244	9,374	2,462	9,130
	Single	5	58	1	66	3	56
	Married	567	1,499	535	1,171	446	695
	Widowed	1,126	5,677	1,708	8,137	2,013	8,379
F. Children (of any age) enumerated with both parents	Total	363	203	142	72	43	27
	Single	363	203	142	72	43	27
	Married	-	-	-	-	-	-
	Widowed	-	-	-	-	-	-
G. Children (of any age) enumerated with a lone parent	Total	3,235	1,881	1,586	978	469	346
	Single	3,235	1,881	1,586	978	469	346
	Married	-	-	-	-	-	-
	Widowed	-	-	-	-	-	-
H. Other persons in family households	Total	2,312	1,861	2,773	3,085	3,062	4,557
	Single	1,984	1,161	2,291	1,468	2,191	1,506
	Married	208	284	200	362	224	366
	Widowed	120	416	282	1,255	647	2,685
I. Population in non-family households (I = J + K)	Total	13,684	9,273	15,943	13,190	15,732	16,932
	Single	12,607	7,306	14,373	9,096	13,662	9,808
	Married	691	597	796	787	740	885
	Widowed	386	1,370	774	3,307	1,330	6,239
J. One-person households	Total	6,997	3,902	7,859	5,917	7,746	8,319
	Single	6,279	2,673	6,727	3,113	6,148	3,246
	Married	425	296	525	433	515	488
	Widowed	293	933	607	2,371	1,083	4,585
K. Members of multi-person households	Total	6,687	5,371	8,084	7,273	7,986	8,613
	Single	6,328	4,633	7,646	5,983	7,514	6,562
	Married	266	301	271	354	225	397
	Widowed	93	437	167	936	247	1,654
L. Population in non-private households	Total	2,497	2,632	2,553	3,100	2,492	2,916
	Single	1,710	1,956	1,758	2,339	1,754	2,150
	Married	748	575	734	567	626	459
	Widowed	39	101	61	194	112	307

TABLE 1 (Contd.): - POPULATION IN PRIVATE HOUSEHOLDS, DISTINGUISHING FAMILY AND NON-FAMILY AND POPULATION IN NON-PRIVATE HOUSEHOLDS

Category of Population		Age and Sex					
		65-69		70-74		75-79	
		Males	Females	Males	Females	Males	Females
A. Population in private households (A = B + I)	Total	62,235	65,273	43,158	48,770	26,656	35,501
	Single	15,363	12,789	10,555	10,527	6,279	7,624
	Married	40,980	29,212	26,215	15,496	14,545	7,454
	Widowed	5,892	23,272	6,388	22,747	5,832	20,423
B. Population in family households (B = C + H)	Total	46,134	43,292	31,101	28,674	18,924	20,356
	Single	2,444	1,813	1,841	1,438	1,223	1,193
	Married	40,178	28,404	25,601	14,968	14,185	7,101
	Widowed	3,512	13,075	3,659	12,268	3,516	12,062
C. Members of family units (C = D + E + F + G)	Total	42,352	36,361	27,280	21,101	15,537	12,633
	Single	173	184	3	28	1	14
	Married	39,961	28,027	25,390	14,640	13,999	6,839
	Widowed	2,218	8,150	1,887	6,433	1,537	5,780
D. Persons enumerated as husbands and wives or couples	Total	39,602	27,531	25,163	14,343	13,856	6,629
	Single	2	2	1	-	-	-
	Married	39,595	27,528	25,159	14,343	13,853	6,628
	Widowed	5	1	3	-	3	1
E. Persons enumerated as lone parents	Total	2,582	8,692	2,117	6,758	1,681	6,004
	Single	3	44	2	28	1	14
	Married	366	499	231	297	146	211
	Widowed	2,213	8,149	1,884	6,433	1,534	5,779
F. Children (of any age) enumerated with both parents	Total	27	30	-	-	-	-
	Single	27	30	-	-	-	-
	Married	-	-	-	-	-	-
	Widowed	-	-	-	-	-	-
G. Children (of any age) enumerated with a lone parent	Total	141	108	-	-	-	-
	Single	141	108	-	-	-	-
	Married	-	-	-	-	-	-
	Widowed	-	-	-	-	-	-
H. Other persons in family households	Total	3,782	6,931	3,821	7,573	3,387	7,723
	Single	2,271	1,629	1,838	1,410	1,222	1,179
	Married	217	377	211	328	186	262
	Widowed	1,294	4,925	1,772	5,835	1,979	6,282
I. Population in non-family households (I = J + K)	Total	16,101	21,981	12,057	20,096	7,732	15,145
	Single	12,919	10,976	8,714	9,089	5,056	6,431
	Married	802	808	614	528	360	353
	Widowed	2,380	10,197	2,729	10,479	2,316	8,361
J. One-person households	Total	8,201	12,119	6,535	11,789	4,342	9,058
	Single	5,699	3,874	3,894	3,448	2,301	2,623
	Married	548	491	436	348	246	219
	Widowed	1,954	7,754	2,205	7,993	1,795	6,216
K. Members of multi-person households	Total	7,900	9,862	5,522	8,307	3,390	6,087
	Single	7,220	7,102	4,820	5,641	2,755	3,808
	Married	254	317	178	180	114	134
	Widowed	426	2,443	524	2,486	521	2,145
L. Population in non-private households	Total	2,759	3,520	2,644	3,712	2,484	4,215
	Single	1,866	2,428	1,694	2,278	1,517	2,311
	Married	653	480	578	413	455	363
	Widowed	240	612	372	1,021	512	1,541

HOUSEHOLDS, CLASSIFIED BY POSITION IN FAMILY UNIT AND BY AGE, SEX AND MARITAL STATUS;
CLASSIFIED BY AGE, SEX AND MARITAL STATUS

Category of Population		Age and Sex					
		80-84		85 and over		Total	
		Males	Females	Males	Females	Males	Females
A. Population in private households (A = B + I)	Total	13,257	19,584	6,932	11,071	1,640,820	1,616,191
	Single	2,707	3,854	1,320	2,062	993,898	863,439
	Married	6,299	2,574	2,634	864	611,315	619,246
	Widowed	4,251	13,156	2,978	8,145	35,607	133,506
B. Population in family households (B = C + H)	Total	9,711	11,950	5,260	7,482	1,490,709	1,452,069
	Single	648	686	421	587	864,426	752,791
	Married	6,167	2,436	2,571	808	603,009	613,142
	Widowed	2,896	8,828	2,268	6,087	23,274	86,136
C. Members of family units (C = D + E + F + G)	Total	7,225	6,436	3,369	3,551	1,443,587	1,389,990
	Single	-	11	1	6	830,753	724,397
	Married	6,033	2,311	2,494	726	598,894	609,186
	Widowed	1,192	4,114	874	2,819	13,940	56,407
D. Persons enumerated as husbands and wives or couples	Total	5,938	2,171	2,414	652	593,764	593,764
	Single	-	-	-	-	175	191
	Married	5,936	2,171	2,414	652	593,551	593,560
	Widowed	2	-	-	-	38	13
E. Persons enumerated as lone parents	Total	1,287	4,265	955	2,899	19,291	73,292
	Single	-	11	1	6	46	1,272
	Married	97	140	80	74	5,343	15,626
	Widowed	1,190	4,114	874	2,819	13,902	56,394
F. Children (of any age) enumerated with both parents	Total	-	-	-	-	721,521	645,099
	Single	-	-	-	-	721,521	645,099
	Married	-	-	-	-	-	-
	Widowed	-	-	-	-	-	-
G. Children (of any age) enumerated with a lone parent	Total	-	-	-	-	109,011	77,835
	Single	-	-	-	-	109,011	77,835
	Married	-	-	-	-	-	-
	Widowed	-	-	-	-	-	-
H. Other persons in family households	Total	2,486	5,514	1,891	3,931	47,122	62,079
	Single	648	675	420	581	33,673	28,394
	Married	134	125	77	82	4,115	3,956
	Widowed	1,704	4,714	1,394	3,268	9,334	29,729
I. Population in non-family households (I = J + K)	Total	3,546	7,634	1,672	3,589	150,111	164,122
	Single	2,059	3,168	899	1,475	129,472	110,648
	Married	132	138	63	56	8,306	6,104
	Widowed	1,355	4,328	710	2,058	12,333	47,370
J. One-person households	Total	2,027	4,523	905	1,828	70,721	74,261
	Single	899	1,379	391	572	55,868	36,215
	Married	89	77	37	26	5,176	3,240
	Widowed	1,039	3,067	477	1,230	9,677	34,806
K. Members of multi-person households	Total	1,519	3,111	767	1,761	79,390	89,861
	Single	1,160	1,789	508	903	73,604	74,433
	Married	43	61	26	30	3,130	2,864
	Widowed	316	1,261	233	828	2,656	12,564
L. Population in non-private households	Total	1,660	3,486	1,183	3,275	52,452	58,754
	Single	902	1,784	583	1,537	41,523	44,204
	Married	283	173	154	106	8,609	7,498
	Widowed	475	1,529	446	1,632	2,320	7,052

TABLE 1A: PERSONS, RETURNED IN THE MARITAL STATUS CATEGORY "OTHER STATUS", INCLUDED WITH MARRIED PERSONS IN TABLE 1.

Persons returned in the Marital Status Category "Other Status"	Age and Sex									
	15 - 24		25 - 44		45 - 64		65 and over		Total	
	Males	Females	Males	Females	Males	Females	Males	Females	Males	Females
A. Persons in Private Households (A = B + I)	104	269	1,027	2,689	755	1,714	361	487	2,247	5,159
B. Persons in Family Households (B = C + H)	65	208	437	2,286	304	1,046	163	195	969	3,735
C. Members of Family Units (C = D + E)	18	157	247	2,146	184	847	39	74	488	3,224
D. Husbands and Wives	12	14	89	107	16	8	1	-	118	129
E. Lone Parents	6	143	158	2,039	168	839	38	74	370	3,095
H. Other Persons in Family Households	47	51	190	140	120	199	124	121	481	511
I. Persons in Non-Family Households (I = J + K)	39	61	590	403	451	668	198	292	1,278	1,424
J. One-Person Households	10	12	343	214	309	446	136	216	798	888
K. Multi-Person Households	29	49	247	189	142	222	62	76	480	536
L. Persons in Non-Private Households	3	2	48	31	43	30	38	23	132	86
TOTAL (A + L)	107	271	1,075	2,720	798	1,744	399	510	2,379	5,245

TABLE 2:- FAMILY UNITS IN PRIVATE HOUSEHOLDS CLASSIFIED BY TYPE AND NUMBER OF CHILDREN

Type of family unit	No. of children in the family unit								Total Number of	
	0	1	2	3	4	5	6	7+	Units	Children
	No. of family units									
Husbands and wives without children	127,313	-	-	-	-	-	-	-	127,313	-
Husbands and wives with child(ren) - Total	-	104,753	121,582	97,708	66,086	36,840	19,454	20,028	466,451	1,366,620
where (a) all children under 15 years	-	61,432	82,212	61,637	35,276	15,388	6,288	3,905	266,138	696,259
(b) all children aged 15 or over	-	43,321	27,489	13,961	5,991	2,100	642	258	93,762	180,380
(c) remainder	-	-	11,881	22,110	24,819	19,352	12,524	15,865	106,551	489,981
Lone Father with child(ren) - Total	-	9,407	4,582	2,512	1,335	716	368	371	19,291	40,139
where (a) all children under 15 years	-	1,174	912	522	297	108	55	26	3,094	6,813
(b) all children aged 15 or over	-	8,233	3,246	1,296	447	153	55	26	13,456	21,688
(c) remainder	-	-	424	694	591	455	258	319	2,741	11,638
Lone Mother with child(ren) - Total	-	36,896	18,131	8,867	4,693	2,330	1,202	1,173	73,292	146,707
where (a) all children under 15 years	-	4,706	3,502	1,912	911	361	155	92	11,639	24,521
(b) all children aged 15 or over	-	32,190	13,035	4,774	1,730	554	169	73	52,525	83,821
(c) remainder	-	-	1,594	2,181	2,052	1,415	878	1,008	9,128	38,365
Total family units	127,313	151,056	144,295	109,087	72,114	39,886	21,024	21,572	686,347	1,553,466

TABLE 3:- FAMILY UNITS IN PRIVATE HOUSEHOLDS CLASSIFIED BY TYPE AND SIZE OF HOUSEHOLD AND BY TYPE AND SIZE OF FAMILY UNIT.

Type of household in which the family unit is living and type and size of family unit		No. of Household Members								Total Number of		
		2	3	4	5	6	7	8	9	10+	Family Units	Members of Family Units
Family units living in 1 - family households - TOTAL		131,622	119,309	126,380	103,674	72,311	42,058	22,887	11,795	12,389	642,425	2,692,719
of which - Husbands and wives with												
	no children	97,828	12,621	1,760	360	97	29	7	6	7	112,715	225,430
	1 child	-	83,946	11,209	1,343	244	61	23	12	4	96,842	290,526
	2 children	-	-	100,733	13,541	1,546	262	62	15	10	116,169	464,676
	3 children	-	-	-	81,461	11,590	1,187	184	45	25	94,492	472,460
	4 children	-	-	-	-	55,210	8,010	856	123	49	64,248	385,488
	5 children	-	-	-	-	-	30,615	4,639	490	109	35,853	250,971
	6+ children	-	-	-	-	-	-	16,186	10,639	11,714	38,539	347,518
Lone Father with												
	1 child	6,917	1,055	179	26	5	1	2	-	-	8,185	16,370
	2 children	-	3,451	629	100	16	7	1	-	1	4,205	12,615
	3 children	-	-	1,925	363	51	6	1	-	-	2,346	9,384
	4+ children	-	-	-	1,024	760	424	224	118	97	2,647	15,963
Lone Mother with												
	1 child	26,877	4,516	751	155	45	14	5	3	3	32,369	64,738
	2 children	-	13,720	2,349	400	87	15	6	3	4	16,584	49,752
	3 children	-	-	6,845	1,181	207	39	9	3	3	8,287	33,148
	4+ children	-	-	-	3,720	2,453	1,388	682	338	363	8,944	53,680
Family units living in two or more family households - TOTAL		-	-	5,552	8,230	9,674	7,696	5,395	3,349	4,026	43,922	140,858
of which - Husbands and wives with												
	no children	-	-	4,088	3,134	2,841	1,936	1,200	699	700	14,598	29,196
	1 child	-	-	-	3,153	1,954	1,143	716	408	537	7,911	23,733
	2 children	-	-	-	-	2,938	1,262	576	291	346	5,413	21,652
	3 children	-	-	-	-	-	1,909	785	304	218	3,216	16,080
	4 children	-	-	-	-	-	-	1,176	415	247	1,838	11,028
	5 children	-	-	-	-	-	-	-	653	334	987	6,909
	6+ children	-	-	-	-	-	-	-	-	943	943	8,481
Lone Father with												
	1 child	-	-	317	270	254	144	103	66	68	1,222	2,444
	2 children	-	-	-	130	98	73	33	23	20	377	1,131
	3 children	-	-	-	-	69	42	20	20	15	166	664
	4+ children	-	-	-	-	-	22	37	32	52	143	855
Lone Mother with												
	1 child	-	-	1,147	1,048	880	619	381	209	243	4,527	9,054
	2 children	-	-	-	495	408	261	175	97	111	1,547	4,641
	3 children	-	-	-	-	232	172	79	49	48	580	2,320
	4+ children	-	-	-	-	-	113	114	83	144	454	2,670