

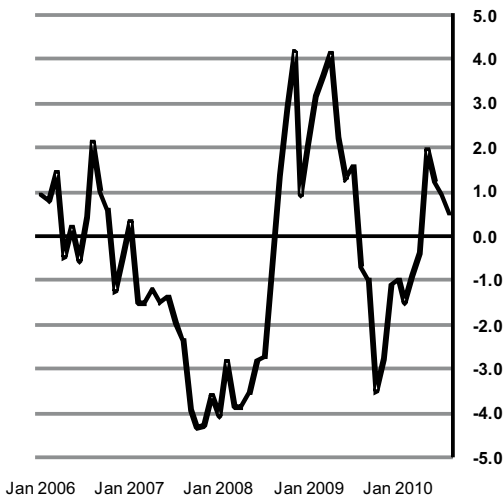


**An Phríomh-Oifig Staidrimh**  
Central Statistics Office

21 September 2010

### Manufacturing Industries Output Price Index

Annual  
% Change



## Wholesale Price Index

Rebased Series 2005 = 100

August 2010

### Manufacturing Output Price Index

	Price Index (Year '05=100)	% monthly change	% annual change
June 2010	98.6	-0.4%	+1.2%
July 2010	98.0	-0.6%	+0.9%
August 2010	98.2	+0.2%	+0.5%

### Annual Manufacturing Prices up 0.5% in August

Monthly factory gate prices increased by 0.2% in August 2010. This compares to an increase of 0.6% recorded for August 2009. As a result, the annual percentage change showed an increase of 0.5% in August 2010, compared with an annual increase of 0.9% in July 2010. *See graph across and Table 1.*

In the month, the price index for export sales increased by 0.1% while the index for home sales increased by 0.3%. In the year there was an increase in the price index for export sales of 0.2% (this can be influenced by currency fluctuations) and an increase of 1.8% in respect of the price index for home sales. *See Table 2 and graph on page 7.*

In the month the most significant changes were increases in Electrical equipment (+2.3%), Computer, electronic and optical products (+0.2%) and Basic pharmaceutical products and pharmaceutical preparations (+0.1%) while there was a decrease in Other food products including bread and confectionary (-1.0%). *See Table 2 and Table 2A.*

Contributing to the annual change were increases in Dairy Products (+11.3%), Computer, electronic and optical products (+7.4%), and Other food products including bread and confectionary (+3.5%), while there were decreases in Basic pharmaceutical products and pharmaceutical preparations (-9.2%), Beverages (-5.1%) and Fabricated metal products, except machinery and equipment (-2.4%). *See Table 2 and Table 2A.*

The yearly price index for Mining and quarrying decreased by 28.9% while there was a monthly increase of 3.4%. *See Table 2.*

A further analysis of Wholesale price changes by sector of use shows that:

- ◆ Building and Construction All material prices increased by 4.3% in the year since August 2009. The most notable yearly changes were increases in Reinforcing Metal (+17.9%), Copper pipes and fittings (+14.9%) and Other Rough Timber, excluding Hardwood (+13.0%) while there were decreases in Stone (-6.1%), Glass (-5.8%) and Protection and communication equipment (-3.6%). Building and Construction All material prices increased by 0.2% in the month. *See Table 3.*
- ◆ Year on year, the price of Capital Goods increased by 1.4%, while the monthly price index showed no change. *See Table 4.*
- ◆ The price of Energy products increased by 4.0% in the year since August 2009, while Petroleum fuels increased by 12.9%. In August 2010, the monthly price index for Energy products decreased by 0.2%, while Petroleum fuels decreased by 0.4%. *See Table 5.*

Published by the Central Statistics Office, Ireland.

Ardee Road  
Dublin 6  
Ireland

Skehard Road  
Cork  
Ireland

LoCall: 1890 313 414 (ROI)  
0870 876 0256 (UK/NL)

Tel: +353 1 498 4000  
Fax: +353 1 498 4229

Tel: +353 21 453 5000  
Fax: +353 21 453 5555

Both offices may be contacted through any of these telephone numbers.

CSO on the Web: [www.cso.ie](http://www.cso.ie)  
and go to  
Economy: Prices

Director General: Gerard O'Hanlon

Enquiries:

WPI Statistics      WPI Section, (021) 453 5449  
wpi@cso.ie  
Queries and Sales      Information Section, (021) 453 5021  
information@cso.ie  
Databank, (021) 453 5650/453 5499  
databank@cso.ie

© Central Statistics Office  
The contents of this release may be quoted provided the source is given clearly and accurately. Reproduction for own or internal use is permitted.

Ref 170/2010

ISSN 0791-3311

For more information contact Kevin Keady on 021 453 5046 or Ken Kennedy on 021 453 5447.

**Table 1 Manufacturing Industries Output Price Indices (excluding VAT) Rebased Series 2005=100**

Base: Year 2005 as 100

Manufacturing Industries Output Price Index					Manufacturing Industries Output Price Index (Home Sales)		Manufacturing Industries Output Price Index (Export Sales)	
			% Change on preceding period	Annual % change		% Change on Preceding Period		% Change on Preceding Period
Period		Price Index			Price Index	Period	Price Index	Period
2005	Year	100.0	-	-	100.0	-	100.0	-
2006	Year	100.4	0.4	0.4	103.5	3.5	99.8	-0.2
2007	Year	98.1	-2.3	-2.3	105.8	2.2	96.6	-3.2
2008	Year	96.8	-1.3	-1.3	112.0	5.9	94.0	-2.7
2009	Year	97.5	0.7	0.7	108.0	-3.6	95.5	1.6
2006	Quarter 1	99.8	-1.2	1.0	102.0	-0.1	99.4	-1.4
	Quarter 2	99.9	0.1	-0.3	104.1	2.1	99.1	-0.3
	Quarter 3	101.1	1.2	1.2	105.0	0.9	100.4	1.3
	Quarter 4	100.6	-0.5	-0.4	102.8	-2.1	100.2	-0.2
2007	Quarter 1	99.0	-1.6	-0.8	103.0	0.2	98.2	-2.0
	Quarter 2	98.6	-0.4	-1.3	105.1	2.0	97.3	-0.9
	Quarter 3	98.3	-0.3	-2.8	106.7	1.5	96.7	-0.6
	Quarter 4	96.5	-1.8	-4.1	108.2	1.4	94.3	-2.5
2008	Quarter 1	95.4	-1.1	-3.6	109.7	1.4	92.7	-1.7
	Quarter 2	95.2	-0.2	-3.4	113.2	3.2	91.8	-1.0
	Quarter 3	97.6	2.5	-0.7	114.6	1.2	94.4	2.8
	Quarter 4	99.1	1.5	2.7	110.6	-3.5	96.9	2.6
2009	Quarter 1	98.2	-0.9	2.9	107.2	-3.1	96.5	-0.4
	Quarter 2	97.6	-0.6	2.5	107.9	0.7	95.6	-0.9
	Quarter 3	97.6	0.0	0.0	108.8	0.8	95.4	-0.2
	Quarter 4	96.6	-1.0	-2.5	107.9	-0.8	94.4	-1.0
2010	Quarter 1	97.1	0.5	-1.1	107.9	0.0	95.0	0.6
	Quarter 2	98.5	1.4	0.9	110.0	1.9	96.3	1.4
2008	January	95.9	-0.5	-4.1	108.7	-0.5	93.5	-0.5
	February	95.9	0.0	-2.8	109.9	1.1	93.3	-0.2
	March	94.4	-1.6	-3.9	110.5	0.5	91.4	-2.0
	April	94.4	0.0	-3.9	112.6	1.9	90.9	-0.5
	May	95.0	0.6	-3.6	113.3	0.6	91.6	0.8
	June	96.2	1.3	-2.8	113.8	0.4	92.9	1.4
	July	95.6	-0.6	-2.7	114.3	0.4	92.0	-1.0
	August	98.4	2.9	-0.7	115.9	1.4	95.1	3.4
	September	98.9	0.5	1.3	113.6	-2.0	96.1	1.1
	October	99.9	1.0	2.9	113.4	-0.2	97.3	1.2
	November	100.0	0.1	4.2	110.9	-2.2	97.9	0.6
	December	97.3	-2.7	0.9	107.5	-3.1	95.4	-2.6
2009	January	97.9	0.6	2.1	106.9	-0.6	96.2	0.8
	February	98.9	1.0	3.1	107.7	0.7	97.3	1.1
	March	97.8	-1.1	3.6	107.1	-0.6	96.1	-1.2
	April	98.3	0.5	4.1	107.5	0.4	96.5	0.4
	May	97.1	-1.2	2.2	107.7	0.2	95.0	-1.6
	June	97.4	0.3	1.2	108.4	0.6	95.4	0.4
	July	97.1	-0.3	1.6	109.6	1.1	94.7	-0.7
	August	97.7	0.6	-0.7	108.1	-1.4	95.7	1.1
	September	97.9	0.2	-1.0	108.7	0.6	95.9	0.2
	October	96.4	-1.5	-3.5	108.0	-0.6	94.2	-1.8
	November	97.2	0.8	-2.8	107.9	-0.1	95.2	1.1
	December	96.2	-1.0	-1.1	107.9	0.0	94.0	-1.3
2010	January	96.9	0.7	-1.0	107.4	-0.5	94.9	1.0
	February	97.4	0.5	-1.5	108.4	0.9	95.4	0.5
	March	96.9	-0.5	-0.9	107.9	-0.5	94.8	-0.6
	April	97.9	1.0	-0.4	109.7	1.7	95.6	0.8
	May	99.0	1.1	2.0	110.8	1.0	96.7	1.2
	June	98.6	-0.4	1.2	109.5	-1.2	96.5	-0.2
	July	98.0	-0.6	0.9	109.7	0.2	95.8	-0.7
	August	98.2	0.2	0.5	110.0	0.3	95.9	0.1

**Table 2 Industrial Producer Price Indices (excluding VAT)**

Base: Year 2005 as 100

	NACE code <sup>1</sup>	Index		Monthly % Change		Annual % Change	
		July	August	June	July	August	August
		2010	2010	2010	2010	2010	2010
Food Products	10	115.9	115.4	0.2	-0.8	-0.4	4.3
Meat and meat products	101	117.8	118.0	0.8	-0.3	0.2	3.9
Fish and fish products	102	123.9	123.7	0.7	0.2	-0.2	6.6
Fruit and vegetables	103	102.7	102.1	0.4	-1.2	-0.6	-4.0
Vegetables and animal oils and fats	104	105.4	105.4	0.0	4.3	0.0	-2.6
Dairy products	105	113.7	114.2	0.1	0.3	0.4	11.3
Grain milling, starches and animal feeds	106,109	114.3	114.2	0.4	0.4	-0.1	-2.6
Bakery and farinaceous products	107	123.8	123.3	0.0	-0.6	-0.4	1.4
Other food products	108	115.4	114.2	0.0	-1.5	-1.0	3.5
Beverages	11	103.5	103.6	0.1	-0.2	0.1	-5.1
Textiles	13	108.9	109.0	0.2	-0.1	0.1	0.1
Wearing apparel	14	100.4	100.6	0.4	-0.1	0.2	0.4
Leather and leather products (incl. footwear); dressing and dyeing of fur	15	92.3	92.6	0.7	-0.1	0.3	1.4
Wood and wood products	16	111.6	113.1	3.3	-3.4	1.3	5.0
Pulp, paper and paper products	17	97.6	97.0	0.2	0.6	-0.6	0.2
Printing and reproduction of recorded media	18	98.0	98.6	-0.2	0.0	0.6	0.7
Chemicals and chemical products	20	106.7	107.0	0.7	-0.8	0.3	7.8
Basic pharmaceutical products and pharmaceutical preparations	21	90.6	90.7	-1.1	-0.7	0.1	-9.2
Rubber and plastic products	22	106.1	106.3	0.5	1.0	0.2	0.9
Other non-metallic mineral products	23	112.9	112.9	0.0	0.0	0.0	-0.3
Basic metals	24	121.7	122.2	0.8	-2.1	0.4	35.9
Fabricated metal products, except machinery and equipment	25	101.3	101.3	0.4	-0.3	0.0	-2.4
Computer, electronic and optical products	26	84.5	84.7	0.7	-0.8	0.2	7.4
Electrical equipment	27	132.5	135.6	0.6	-0.3	2.3	5.9
Machinery and Equipment n.e.c.	28	104.4	104.6	-0.2	-1.5	0.2	2.4
Motor vehicles, trailers and semi-trailers	29	96.1	96.1	0.2	-0.5	0.0	0.9
Furniture	31	103.2	103.4	-0.5	0.0	0.2	-2.7
Other Manufacturing	32	106.6	106.6	0.1	-0.3	0.0	1.2
Mining and quarrying	05-09	93.6	96.8	-0.5	0.1	3.4	-28.9
<b>Total transportable goods industries</b>		97.9	98.1	-0.4	-0.6	0.2	-0.2
Food products, Beverages and Tobacco Products	10-13	114.4	113.9	0.2	-0.8	-0.4	3.4
Manufacturing industries excluding Food Products		94.3	94.6	-0.5	-0.5	0.3	-0.5
Manufacturing Industries excluding Food Products, Beverages and Tobacco Products		93.9	94.2	-0.5	-0.6	0.3	-0.4
Intermediate goods industries (except energy)		109.1	109.8	0.6	1.2	0.6	0.1
Capital goods industries		86.7	86.8	0.5	-1.8	0.1	5.0
Durable consumer goods industries		108.6	108.8	0.2	-1.2	0.2	-1.3
Non-durable consumer goods industries		99.8	99.8	-0.5	-0.8	0.0	-3.5
Manufacturing industries (home sales) <sup>2</sup>		109.7	110.0	-1.2	0.2	0.3	1.8
Manufacturing industries (export sales) <sup>2</sup>		95.8	95.9	-0.2	-0.7	0.1	0.2
<b>Total manufacturing industries<sup>2</sup></b>		98.0	98.2	-0.4	-0.6	0.2	0.5

<sup>1</sup> Nace Rev. 2 Statistical classification of economic activities in the European Community.<sup>2</sup> Excludes Mining and quarrying.

**Table 2A Contribution to changes in the Manufacturing Output Price Index (Table 2)**

Industrial sector	NACE code <sup>1</sup>	Contribution to overall % change <sup>2</sup>	
		One month	Twelve months
Food Products	10	-0.10	0.87
Meat and meat products	101	0.01	0.16
Fish and fish products	102	0.00	0.03
Fruit and vegetables	103	0.00	-0.01
Vegetables and animal oils and fats	104	0.00	0.00
Dairy products	105	0.01	0.31
Grain milling, starches and animal feeds	106,109	0.00	-0.02
Bakery and farinaceous products	107	0.00	0.01
Other food products	108	-0.11	0.39
Beverages	11	0.00	-0.13
Tobacco Products	12	0.00	0.01
Textiles	13	0.00	0.00
Wearing apparel	14	0.00	0.00
Leather and leather products (incl. footwear); dressing and dyeing of fur	15	0.00	0.00
Wood and wood products	16	0.02	0.06
Pulp, paper and paper products	17	0.00	0.00
Printing and reproduction of recorded media	18	0.00	0.00
Coke and refined petroleum products	19	0.08	0.56
Chemicals and chemical products	20	0.01	0.18
Basic pharmaceutical products and pharmaceutical preparations	21	0.04	-2.88
Rubber and plastic products	22	0.00	0.02
Other non-metallic mineral products	23	0.00	-0.03
Basic metals	24	0.00	0.19
Fabricated metal products, except Machinery and equipment	25	0.00	-0.05
Computer, electronic and optical products	26	0.05	1.46
Electrical equipment	27	0.04	0.09
Machinery and Equipment n.e.c.	28	0.01	0.07
Motor vehicles, trailers and semi-trailers	29	0.00	0.01
Other transport equipment	30	0.00	0.00
Furniture	31	0.00	-0.02
Other Manufacturing	32	0.00	0.07
Repair and Installation of machinery and equipment	33	0.00	0.00
Mining and quarrying	05-09	0.00	-0.77

<sup>1</sup> Nace Rev. 2 Statistical classification of economic activities in the European Community.

<sup>2</sup> See Background Notes.

**Table 3 Detailed Wholesale Price Indices (excluding VAT) for Building and Construction Materials<sup>1</sup>**

Base: Year 2005 as 100

Materials	Index		Monthly % Change			Annual % Change
	July	August	June	July	August	August
	2010	2010	2010	2010	2010	2010
Stone, sand and gravel	129.3	127.5	0.0	0.3	-1.4	-5.0
Stone	126.7	124.6	0.0	0.2	-1.7	-6.1
Sand and gravel	184.5	184.6	0.0	1.0	0.1	1.0
Cement	127.8	127.8	0.0	0.0	0.0	0.0
Ready mixed mortar and concrete	107.5	107.9	0.0	0.9	0.4	-2.4
Concrete blocks and bricks	110.9	110.7	0.0	-0.4	-0.2	-1.9
Other concrete products	100.6	100.6	0.0	0.5	0.0	0.0
Precast concrete	108.5	108.5	0.0	0.0	0.0	-1.1
Other concrete products (Excluding precast concrete)	97.7	97.7	0.0	0.8	0.0	0.6
Structural steel and reinforcing metal	109.7	110.4	0.3	-0.1	0.6	13.3
Structural steel	110.8	112.1	0.3	0.3	1.2	10.7
Fabricated metal	106.8	108.1	0.1	0.1	1.2	11.7
Other Structural steel	93.8	94.8	1.6	0.8	1.1	3.4
Reinforcing metal	108.2	107.9	0.3	-0.5	-0.3	17.9
Other steel products	97.3	97.3	0.0	0.0	0.0	1.2
Rough timber (including plain sawn)	111.7	111.7	0.2	2.6	0.0	11.9
Hardwood	103.7	103.7	0.0	0.0	0.0	0.1
Other	112.8	112.8	0.3	2.7	0.0	13.0
Other timber	102.8	102.8	0.0	0.0	0.0	-0.3
Windows and doors	111.9	111.9	0.0	0.0	0.0	0.9
Other	94.7	94.7	0.0	0.0	0.0	-1.7
Bituminous macadam, asphalt and bituminous emulsions	133.6	133.7	0.0	0.4	0.1	0.8
Bituminous macadam and asphalt	132.8	133.0	0.0	0.5	0.2	0.5
Bituminous emulsions	152.7	150.8	-0.7	0.0	-1.2	9.3
Electrical fittings	119.3	119.7	-0.9	-0.5	0.3	1.2
Lighting equipment	129.1	129.1	0.0	0.0	0.0	-0.8
Protection & communication equipment	118.0	118.0	-3.4	-0.2	0.0	-3.6
All other materials	127.5	128.0	-0.2	2.6	0.4	10.4
Plumbing materials incl. sanitary ware	112.1	112.1	0.0	-2.9	0.0	-3.4
HVAC (heating & ventilation equipment)	114.7	114.7	0.0	0.0	0.0	4.5
Insulating materials	122.2	122.2	0.0	0.0	0.0	1.2
Pipes and fittings	159.1	159.1	0.9	1.7	0.0	11.1
PVC	108.9	108.9	0.0	0.0	0.0	2.2
Copper	283.2	283.2	1.3	2.3	0.0	14.9
Plaster	123.1	123.1	-1.1	0.0	0.0	-1.1
Paints, oils and varnishes	93.8	93.8	-0.7	0.0	0.0	-1.3
Glass	115.3	115.3	0.0	0.0	0.0	-5.8
All other metal fittings	117.3	118.0	0.0	0.0	0.6	0.6
All other products	126.6	127.6	-0.5	5.0	0.8	17.4
<b>All materials</b>	<b>117.6</b>	<b>117.8</b>	<b>-0.2</b>	<b>1.0</b>	<b>0.2</b>	<b>4.3</b>

<sup>1</sup> The former Table 3 series is available on request: see Wholesale Price Index Introduction of Updated Series to Base 2005 as 100

**Table 4 Capital Goods Price Indices (excluding VAT)**

Base: Year 2005 as 100

Capital goods	Index		Monthly % Change			Annual % Change
	July 2010	August 2010	June 2010	July 2010	August 2010	August 2010
Transportable capital for use in						
Agriculture	109.0	109.0	0.0	0.0	0.0	0.1
Industry	98.3	97.6	0.1	-0.1	-0.7	-2.5
of which:						
Private vehicles <sup>1</sup>	103.7	103.6	0.0	0.0	-0.1	0.1
Commercial vehicles	99.6	99.6	0.0	0.0	0.0	-3.9
Agriculture and industry	99.9	99.4	0.0	-0.1	-0.5	-2.0
Other sectors	99.8	99.8	0.0	-0.2	0.0	-2.3
Total transportable capital	99.9	99.6	0.0	-0.1	-0.3	-2.1
Building and construction (i.e. materials and wages)	114.9	114.9	-0.1	0.5	0.0	1.9
<b>All capital goods</b>	<b>112.6</b>	<b>112.6</b>	<b>-0.1</b>	<b>0.4</b>	<b>0.0</b>	<b>1.4</b>

<sup>1</sup> Private vehicles are inclusive of VAT which is non-deductible for industry and agriculture.

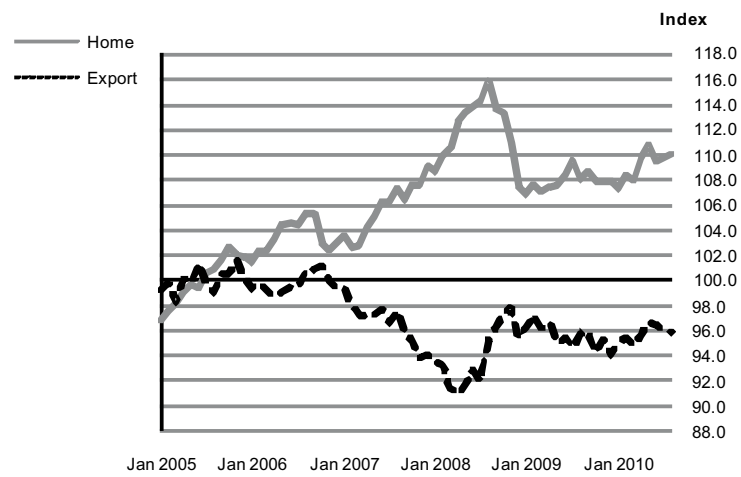
**Table 5 Wholesale Price Indices (excluding VAT) for Energy Products  
(i.e. Fuels purchased by Manufacturing Industry)**

Base: Year 2005 as 100

Energy fuels	Index		Monthly % Change			Annual % Change
	July 2010	August 2010	June 2010	July 2010	August 2010	August 2010
Petrol	132.1	131.6	-0.4	-1.1	-0.4	6.0
Autodiesel	124.8	124.6	-0.2	-0.7	-0.2	10.7
Gas oil (other than autodiesel)	126.7	125.9	0.0	-1.9	-0.6	13.9
Fuel oil	155.8	155.3	-0.6	-0.3	-0.3	14.0
Electricity	115.2	115.2	0.0	0.0	0.0	-0.3
Petroleum fuels <sup>1</sup>	142.7	142.2	-0.4	-0.6	-0.4	12.9
Energy products	123.8	123.6	-0.2	-0.2	-0.2	4.0

<sup>1</sup> Energy products excluding electricity.

**Manufacturing Industries: Output Price Indices for  
Home and Export Sale  
(Base: Year 2005 as 100)**



## Background Notes

**Wholesale Price Index** The term Industrial Producer Price Index refers to a family of indices that measure the average change over time in the selling prices received by domestic producers of goods and services. The other three wholesale price index series incorporate imported and home produced goods sold by manufacturers and wholesale outlets.

**Coverage** The output price indices for sectors of Manufacturing Industries cover both home sales and export sales. The Indices for Total transportable goods industries; Food, drink and tobacco; Manufacturing industries excluding food; Manufacturing industries excluding food, drink and tobacco; Intermediate goods industries (except energy); Capital goods industries; Durable consumer goods industries; Non-durable consumer goods industries; Manufacturing industries (home sales); Manufacturing industries (export sales) and Total manufacturing industries are all calculated on a net sector basis, i.e. the weights used to combine the sectoral indices (including those for sectors not distinguished in Table 2) exclude sales to other sectors of Manufacturing Industry.

Table 2A gives the percentage contribution of each sector (including those not published on Table 2) to the overall percentage change on Table 2. The percentage contributions on Table 2A may not add up to the Total Manufacturing industries percentage change on Table 2 due to rounding and other adjustments for presentational purposes. In comparing these contributions against these percentage changes in indices presented on Table 2 caution should be exercised as the former is calculated on a net sector basis.

The Building Materials, Capital Goods and Energy Products indices (Tables 3, 4 and 5) cover home production and imports of these commodities. Table 3, the Wholesale Price Index for Building and Construction Materials, provides only a general indication of price trends in that sector. Actual transaction prices are collected for materials purchased by construction and civil engineering firms. The price indices reflect an 'average' over a mixture of products from many companies throughout the country. They also reflect prices for both long-term and short-term contracts and for high and low volume civil engineering works. It should be noted that long-term, high volume fixed contracts for major works might dilute in the short-term the impact of emerging price changes on the index. Furthermore, industry sources have confirmed that price increases notified by companies may not always be achieved in practice following negotiations. Much depends on the prevailing market conditions. Therefore changes over the short-term in the indices derived from these transaction prices will not always coincide with price changes notified by companies.

**Prices** All indices in the series are based on prices at the 15th of the month. Quarterly and annual indices are simple averages of the corresponding monthly indices.

Prices used in the compilation of the indices are:

- excluding delivery charges itemised on the invoice separately
- after discounts or surcharges are applied
- before addition of direct subsidies
- exclusive of VAT (except for private vehicles used in Table 4)
- inclusive of excise duty

Every effort is made by the Wholesale Prices Section to collect all prices for the relevant month. Where this is not possible late prices are included in the following month's calculations.

**Methodology** This Wholesale Price Index series is compiled to base 2005 as 100. A methodological description of this updated series is given in the Wholesale Price Index Introduction of Updated Series base 2005 as 100.

**Calculating percentage changes in the index** The movement of the output price indices is expressed as percentage change, rather than a change in index points, because index point changes are affected by the level of the index in relation to its base period, whereas percentage changes are not.



The example below illustrates the computation of a percentage change:

<b>Percentage change calculation</b>	
Current index	105.6
Less previous index	102.1
Equals in index points	3.5
Divided by the previous index	102.1
Equals	0.0343
Results multiplied by 100	$0.0343 \times 100$
Equals percentage change	3.4

Alternatively, users may calculate a percentage change by dividing the current index by the previous index, multiplying by 100 and then subtracting 100.