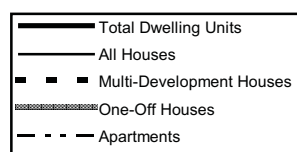
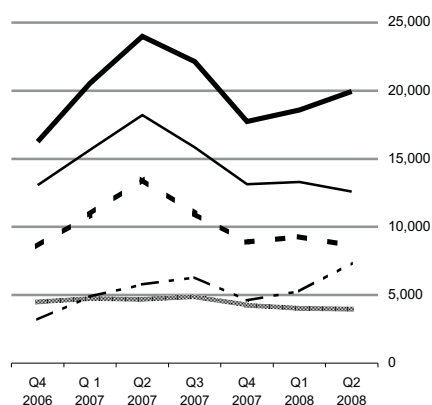




## Planning Permissions Quarter 2 2008

**Number of Dwelling Units approved  
classified by type of unit,  
q4 2006 - q2 2008**



**Number of Dwelling Units Approved**

	Houses	Apartments	Total
<b>Quarter 2 2007</b>	18,201	5,787	23,988
<b>Quarter 2 2008</b>	12,598	7,344	19,942
<b>% change</b>	-30.8%	+26.9%	-16.9%

### Dwelling units approved down 16.9% in year

This release shows that for the second quarter of 2008, planning permissions were granted for 19,942 dwelling units, compared with 23,988 units for the same period in 2007, a decrease of 16.9%. *See Table 4.*

The second quarter figures also show that:

- ◆ Planning Permissions were granted for 12,598 houses in the second quarter of 2008 and 18,201 in the second quarter of 2007, a decrease of 30.8%. *See Table 4.*
- ◆ Planning permissions were granted for 7,344 apartment units, compared with 5,787 units for the same period in 2007, an increase of 26.9%. *See Table 4.*
- ◆ One-off houses accounted for 19.9% of all new dwelling units granted planning permission in this quarter. *See Table 4.*
- ◆ The total number of planning permissions granted for all developments was 11,215. This compares with 17,311 in the second quarter of 2007, a decrease of 35.2%. *See Table 1.*
- ◆ Total floor area planned was 4,770 thousand sq. metres in the second quarter of 2008. Of this, 60.8% was for new dwellings, 29.9% for other new constructions and 9.3% for extensions. The total floor area planned decreased by 29% in comparison with the same quarter of 2007. *See Table 1.*
- ◆ Planning Permissions for new buildings for Agriculture decreased to 442 this quarter. This compares to 4,065 permissions in the same quarter of 2007. *See Table 3A.*

Published by the Central Statistics Office, Ireland.

Ardee Road  
Dublin 6  
Ireland

Skehard Road  
Cork  
Ireland

LoCall: 1890 313 414 (ROI)  
0870 8760256 (UK/NL)

Tel: +353 1 498 4000  
Fax: +353 1 498 4229

Tel: +353 21 453 5000  
Fax: +353 21 453 5555

Both offices may be contacted through any of these telephone numbers.

CSO on the Web: [www.cso.ie](http://www.cso.ie)  
and go to  
Business Sectors: Construction

Director General: Gerard O'Hanlon

Enquiries:

Building Statistics Building Section, ext 5526  
planning.permissions@cso.ie

Queries and Sales Information Section, ext 5021  
information@cso.ie

© Central Statistics Office  
The contents of this release may be quoted provided the source is given clearly and accurately. Reproduction for own or internal use is permitted.

Data from tables 5, 6 & 7 are now only available in electronic format on the CSO website. To view the data in this format go to  
<http://www.cso.ie/px/pxeirestat/database/eirestat/Planning%20Permissions/Planning%20Permissions.asp>

**Table 1 Summary of Planning Permissions Granted, Q1 2000 - Q2 2008**

Period	Number of Permissions					Total Floor Area <sup>2</sup> (000 sq.m) <sup>1</sup>				
	New Construction		Extension	Alteration and Conversion	Total	New Construction		Extension	Total	
	Dwellings	Other				Dwellings	Other			
2000	Q 1	6,630	-	-	-	-	-	-	-	
	Q 2	6,597	-	-	-	-	-	-	-	
	Q 3	6,893	1,449	4,206	762	13,310	3,223	1,159	525	4,906
	Q 4	6,212	1,354	3,087	612	11,265	3,019	865	417	4,301
	<b>Year<sup>2</sup></b>	<b>26,332</b>	-	-	-	-	-	-	-	-
2001	Q 1	6,333	1,455	2,986	674	11,448	2,909	1,084	510	4,503
	Q 2	5,538	1,465	3,030	639	10,672	2,779	921	368	4,067
	Q 3	6,157	1,671	3,715	786	12,329	2,513	998	453	3,964
	Q 4	5,585	1,606	3,106	754	11,051	2,262	1,020	391	3,672
	<b>Year</b>	<b>23,613</b>	<b>6,197</b>	<b>12,837</b>	<b>2,853</b>	<b>45,500</b>	<b>10,463</b>	<b>4,023</b>	<b>1,722</b>	<b>16,206</b>
2002	Q 1	5,025	1,512	2,843	856	10,236	2,096	972	423	3,491
	Q 2	4,547	1,349	2,883	665	9,444	2,505	873	370	3,748
	Q 3	5,502	1,691	3,704	757	11,654	2,335	1,139	429	3,904
	Q 4	4,654	1,374	2,892	646	9,566	1,856	1,020	401	3,277
	<b>Year</b>	<b>19,728</b>	<b>5,926</b>	<b>12,322</b>	<b>2,924</b>	<b>40,900</b>	<b>8,792</b>	<b>4,004</b>	<b>1,623</b>	<b>14,420</b>
2003	Q 1	4,846	1,278	2,713	645	9,482	1,797	713	365	2,874
	Q 2	5,110	1,465	3,103	677	10,355	2,509	974	345	3,828
	Q 3	5,583	1,693	3,457	689	11,422	2,832	1,184	411	4,427
	Q 4	5,410	1,496	2,886	566	10,358	2,473	1,066	376	3,915
	<b>Year</b>	<b>20,949</b>	<b>5,932</b>	<b>12,159</b>	<b>2,577</b>	<b>41,617</b>	<b>9,611</b>	<b>3,937</b>	<b>1,497</b>	<b>15,044</b>
2004	Q 1	6,887	1,545	2,820	587	11,839	3,156	940	364	4,461
	Q 2	7,563	1,660	3,511	652	13,386	3,344	1,156	398	4,898
	Q 3	7,100	1,899	4,076	731	13,806	3,172	1,007	467	4,646
	Q 4	5,962	1,613	3,061	605	11,241	3,123	1,155	436	4,714
	<b>Year</b>	<b>27,512</b>	<b>6,717</b>	<b>13,468</b>	<b>2,575</b>	<b>50,272</b>	<b>12,795</b>	<b>4,258</b>	<b>1,665</b>	<b>18,719</b>
2005	Q 1	6,170	1,571	3,028	586	11,355	3,299	985	427	4,711
	Q 2	6,722	2,068	3,845	672	13,307	3,764	1,478	488	5,730
	Q 3	6,485	2,189	4,476	778	13,928	3,219	1,327	530	5,076
	Q 4	5,957	1,871	3,533	653	12,014	2,883	1,167	427	4,478
	<b>Year</b>	<b>25,334</b>	<b>7,699</b>	<b>14,882</b>	<b>2,689</b>	<b>50,604</b>	<b>13,165</b>	<b>4,957</b>	<b>1,872</b>	<b>19,995</b>
2006	Q 1	5,890	1,822	3,575	603	11,890	2,999	1,151	444	4,595
	Q 2	5,595	2,494	4,137	666	12,892	2,737	1,612	475	4,824
	Q 3	6,035	2,965	4,759	756	14,515	2,981	1,764	593	5,337
	Q 4	5,254	3,172	3,883	653	12,962	2,374	1,697	461	4,532
	<b>Year</b>	<b>22,774</b>	<b>10,453</b>	<b>16,354</b>	<b>2,678</b>	<b>52,259</b>	<b>11,091</b>	<b>6,224</b>	<b>1,973</b>	<b>19,288</b>
2007	Q 1	5,709	4,995	4,033	651	15,388	2,952	2,272	570	5,793
	Q 2	5,636	6,229	4,751	695	17,311	3,409	2,668	643	6,719
	Q 3	5,880	5,411	5,210	837	17,338	3,165	2,748	725	6,638
	Q 4	5,028	2,767	3,841	694	12,330	2,680	1,626	529	4,835
	<b>Year</b>	<b>22,253</b>	<b>19,402</b>	<b>17,835</b>	<b>2,877</b>	<b>62,367</b>	<b>12,206</b>	<b>9,314</b>	<b>2,467</b>	<b>23,985</b>
2008	Q1	4,777	2,104	3,523	651	11,055	2,645	1,359	509	4,514
	Q2	4,722	2,050	3,743	700	11,215	2,901	1,425	444	4,770

<sup>1</sup> For categories where floor area is a relevant measure<sup>2</sup> A review of the series for new dwellings was undertaken and resulted in revised data for 1999 and the first half of 2000

Corresponding revised data were not available for floor area or for permissions other than for new dwellings for those periods

**Table 2 Summary of Planning Permissions granted, Q2 2008, classified by region, county and type of development**

Planning Region and County	Number of Permissions					Total Floor Area (000 sq.m)			
	New Construction		Extension	Alteration and Conversion	Total	New Construction		Extension	Total <sup>1</sup>
	Dwellings	Other				Dwellings	Other		
<b>Border, Midland and Western</b>	<b>2,285</b>	<b>787</b>	<b>1,185</b>	<b>199</b>	<b>4,456</b>	<b>1,105</b>	<b>518</b>	<b>157</b>	<b>1,781</b>
<b>Border</b>	<b>1,125</b>	<b>366</b>	<b>564</b>	<b>81</b>	<b>2,136</b>	<b>512</b>	<b>205</b>	<b>64</b>	<b>781</b>
Cavan	225	58	82	6	371	109	26	11	146
Donegal	439	111	216	24	790	187	45	20	252
Leitrim	77	43	27	8	155	21	13	3	37
Louth	126	59	126	25	336	82	49	14	146
Monaghan	174	70	54	6	304	66	53	11	130
Sligo	84	25	59	12	180	47	19	5	71
<b>Midland</b>	<b>438</b>	<b>154</b>	<b>223</b>	<b>42</b>	<b>857</b>	<b>309</b>	<b>132</b>	<b>35</b>	<b>476</b>
Laois	153	65	77	9	304	91	17	10	118
Longford	57	12	23	1	93	30	15	3	48
Offaly	124	26	54	14	218	56	47	13	117
Westmeath	104	51	69	18	242	132	52	9	194
<b>West</b>	<b>722</b>	<b>267</b>	<b>398</b>	<b>76</b>	<b>1,463</b>	<b>284</b>	<b>181</b>	<b>58</b>	<b>523</b>
Galway City	24	16	53	11	104	12	22	8	42
Galway <sup>2</sup>	323	139	162	37	661	133	96	21	251
Mayo	258	53	117	13	441	90	18	22	130
Roscommon	117	59	66	15	257	49	45	7	100
<b>Southern and Eastern</b>	<b>2,437</b>	<b>1,263</b>	<b>2,558</b>	<b>501</b>	<b>6,759</b>	<b>1,796</b>	<b>906</b>	<b>287</b>	<b>2,989</b>
<b>Dublin</b>	<b>247</b>	<b>287</b>	<b>846</b>	<b>208</b>	<b>1,588</b>	<b>729</b>	<b>225</b>	<b>79</b>	<b>1,034</b>
Dublin City	86	158	351	118	713	183	83	29	295
Dun Laoghaire-Fingal	61	20	206	23	310	251	7	18	276
Fingal	58	61	149	32	300	286	62	17	365
South Dublin	42	48	140	35	265	9	73	16	98
<b>Mid-East</b>	<b>405</b>	<b>168</b>	<b>344</b>	<b>56</b>	<b>973</b>	<b>142</b>	<b>167</b>	<b>37</b>	<b>346</b>
Kildare	118	61	112	24	315	48	58	14	120
Meath	175	62	125	13	375	50	48	13	112
Wicklow	112	45	107	19	283	43	61	9	114
<b>Mid-West</b>	<b>394</b>	<b>184</b>	<b>304</b>	<b>65</b>	<b>947</b>	<b>246</b>	<b>108</b>	<b>38</b>	<b>392</b>
Clare	154	63	106	27	350	124	36	10	171
Limerick City	3	13	29	14	59	21	2	2	25
Limerick <sup>2</sup>	157	68	114	14	353	63	40	13	116
North Tipperary	80	40	55	10	185	38	30	12	81
<b>South-East</b>	<b>638</b>	<b>257</b>	<b>419</b>	<b>87</b>	<b>1,401</b>	<b>322</b>	<b>203</b>	<b>59</b>	<b>584</b>
Carlow	73	35	45	12	165	62	25	7	94
Kilkenny	135	62	89	15	301	38	14	11	63
South Tipperary	81	45	65	11	202	28	25	10	63
Waterford City	7	23	30	7	67	22	66	10	98
Waterford <sup>2</sup>	114	35	70	17	236	71	16	7	94
Wexford	228	57	120	25	430	102	56	14	172
<b>South-West</b>	<b>753</b>	<b>367</b>	<b>645</b>	<b>85</b>	<b>1,850</b>	<b>357</b>	<b>203</b>	<b>74</b>	<b>634</b>
Cork City	17	18	62	8	105	9	34	4	47
Cork <sup>2</sup>	511	255	415	61	1,242	261	98	52	411
Kerry	225	94	168	16	503	87	71	18	176
<b>State</b>	<b>4,722</b>	<b>2,050</b>	<b>3,743</b>	<b>700</b>	<b>11,215</b>	<b>2,901</b>	<b>1,424</b>	<b>444</b>	<b>4,770</b>

<sup>1</sup> For categories where floor area is a relevant

<sup>2</sup> Excluding cities

- No permissions

**Table 3(a) Number of Planning Permissions granted, Q2 2008, classified by region, type of development and functional category**

Type of Development and Planning Region	Functional Category								Total
	Dwellings	Commercial Buildings	Buildings for Agriculture	Industrial Buildings	Govt-, Health and Education	Other Buildings for Social Use	Civil Eng-	Other	
<b>New Construction</b>									
<b>Border, Midland and Western</b>	<b>2,285</b>	<b>203</b>	<b>200</b>	<b>42</b>	<b>55</b>	<b>33</b>	<b>120</b>	<b>134</b>	<b>3,072</b>
Border	1,125	87	120	16	20	13	42	68	1,491
Midland	438	43	30	14	18	3	24	22	592
West	722	73	50	12	17	17	54	44	989
<b>Southern and Eastern</b>	<b>2,437</b>	<b>247</b>	<b>242</b>	<b>74</b>	<b>85</b>	<b>44</b>	<b>243</b>	<b>328</b>	<b>3,700</b>
Dublin	247	70	2	12	33	9	31	130	534
Mid-East	405	33	36	19	12	6	35	27	573
Mid-West	394	34	45	7	6	2	38	52	578
South-East	638	46	63	14	17	12	57	48	895
South West	753	64	96	22	17	15	82	71	1,120
<b>State</b>	<b>4,722</b>	<b>450</b>	<b>442</b>	<b>116</b>	<b>140</b>	<b>77</b>	<b>363</b>	<b>462</b>	<b>6,772</b>
<b>Extension</b>									
<b>Border, Midland and Western</b>	<b>954</b>	<b>102</b>	<b>16</b>	<b>22</b>	<b>68</b>	<b>23</b>	-	-	<b>1,185</b>
Border	465	50	6	11	23	9	-	-	564
Midland	177	21	3	2	16	4	-	-	223
West	312	31	7	9	29	10	-	-	398
<b>Southern and Eastern</b>	<b>2,154</b>	<b>166</b>	<b>43</b>	<b>27</b>	<b>118</b>	<b>50</b>	-	-	<b>2,558</b>
Dublin	728	66	1	3	42	6	-	-	846
Mid-East	289	18	3	9	17	8	-	-	344
Mid-West	256	20	7	3	8	10	-	-	304
South-East	334	27	16	6	21	15	-	-	419
South West	547	35	16	6	30	11	-	-	645
<b>State</b>	<b>3,108</b>	<b>268</b>	<b>59</b>	<b>49</b>	<b>186</b>	<b>73</b>	-	-	<b>3,743</b>
<b>Alteration and Conversion</b>									
<b>Border, Midland and Western</b>	<b>29</b>	<b>139</b>	<b>2</b>	<b>3</b>	<b>19</b>	<b>7</b>	-	-	<b>199</b>
Border	15	50	1	2	11	2	-	-	81
Midland	3	36	-	-	1	2	-	-	42
West	11	53	1	1	7	3	-	-	76
<b>Southern and Eastern</b>	<b>172</b>	<b>231</b>	<b>9</b>	<b>11</b>	<b>56</b>	<b>22</b>	-	-	<b>501</b>
Dublin	90	85	-	2	23	8	-	-	208
Mid-East	18	29	2	-	5	2	-	-	56
Mid-West	13	33	2	4	9	4	-	-	65
South-East	22	45	2	3	11	4	-	-	87
South West	29	39	3	2	8	4	-	-	85
<b>State</b>	<b>201</b>	<b>370</b>	<b>11</b>	<b>14</b>	<b>75</b>	<b>29</b>	-	-	<b>700</b>
<b>All Developments</b>									
<b>Border, Midland and Western</b>	<b>3,268</b>	<b>444</b>	<b>218</b>	<b>67</b>	<b>142</b>	<b>63</b>	<b>120</b>	<b>134</b>	<b>4,456</b>
Border	1,605	187	127	29	54	24	42	68	2,136
Midland	618	100	33	16	35	9	24	22	857
West	1,045	157	58	22	53	30	54	44	1,463
<b>Southern and Eastern</b>	<b>4,763</b>	<b>644</b>	<b>294</b>	<b>112</b>	<b>259</b>	<b>116</b>	<b>243</b>	<b>328</b>	<b>6,759</b>
Dublin	1,065	221	3	17	98	23	31	130	1,588
Mid-East	712	80	41	28	34	16	35	27	973
Mid-West	663	87	54	14	23	16	38	52	947
South-East	994	118	81	23	49	31	57	48	1,401
South West	1,329	138	115	30	55	30	82	71	1,850
<b>State</b>	<b>8,031</b>	<b>1,088</b>	<b>512</b>	<b>179</b>	<b>401</b>	<b>179</b>	<b>363</b>	<b>462</b>	<b>11,215</b>

- No permissions

**Table 3(b) Total Floor Area Planned (000 sq.m) in new construction and extensions, Q2 2008, classified by region and functional category**

Type of Development and Planning Region	Functional Category						Total <sup>1</sup>
	Dwellings	Commercial Buildings	Buildings for Agriculture	Industrial Buildings	Govt., Health and Education	Other Buildings for Social Use	
<b>New Construction</b>							
<b>Border, Midland and Western</b>	<b>1,105</b>	<b>234</b>	<b>118</b>	<b>89</b>	<b>62</b>	<b>16</b>	<b>1,624</b>
Border	512	84	82	13	20	6	717
Midland	309	58	15	46	11	1	440
West	284	92	20	30	30	9	465
<b>Southern and Eastern</b>	<b>1,796</b>	<b>501</b>	<b>136</b>	<b>163</b>	<b>67</b>	<b>39</b>	<b>2,702</b>
Dublin	729	161	1	25	28	10	954
Mid-East	142	69	19	60	13	6	309
Mid-West	246	63	19	18	5	3	354
South-East	322	102	42	33	13	13	525
South West	357	105	55	27	8	7	559
<b>State</b>	<b>2,901</b>	<b>735</b>	<b>254</b>	<b>252</b>	<b>129</b>	<b>55</b>	<b>4,326</b>
<b>Extension</b>							
<b>Border, Midland and Western</b>	<b>73</b>	<b>36</b>	<b>5</b>	<b>14</b>	<b>22</b>	<b>8</b>	<b>158</b>
Border	33	14	3	8	5	1	64
Midland	15	7	1	3	6	4	36
West	24	16	1	3	11	3	58
<b>Southern and Eastern</b>	<b>142</b>	<b>58</b>	<b>12</b>	<b>27</b>	<b>38</b>	<b>10</b>	<b>287</b>
Dublin	40	23	1	1	14	1	80
Mid-East	21	2	1	7	4	2	37
Mid-West	19	6	2	6	3	1	37
South-East	26	12	4	7	8	2	59
South West	36	15	5	6	9	3	74
<b>State</b>	<b>215</b>	<b>95</b>	<b>17</b>	<b>40</b>	<b>60</b>	<b>18</b>	<b>444</b>
<b>Total New Construction and Extension</b>							
<b>Border, Midland and Western</b>	<b>1,178</b>	<b>270</b>	<b>122</b>	<b>102</b>	<b>84</b>	<b>24</b>	<b>1,780</b>
Border	545	97	85	21	25	7	780
Midland	325	65	16	49	17	5	477
West	308	108	22	32	41	12	523
<b>Southern and Eastern</b>	<b>1,938</b>	<b>559</b>	<b>148</b>	<b>190</b>	<b>105</b>	<b>49</b>	<b>2,989</b>
Dublin	769	183	2	25	42	12	1,033
Mid-East	163	72	20	66	17	8	346
Mid-West	265	69	21	25	8	4	392
South-East	348	115	46	40	20	15	584
South West	392	121	60	34	17	10	634
<b>State</b>	<b>3,116</b>	<b>829</b>	<b>270</b>	<b>292</b>	<b>189</b>	<b>73</b>	<b>4,770</b>

<sup>1</sup> For categories where floor area is a relevant measure

NOTE: 0 implies less than 500 sq.m

**Table 4 Summary of Planning Permissions Granted for new houses and apartments, Q1 2004 - Q2 2008**

Period	All Houses				of which Multi-Development Houses				of which One-Off Houses				Apartments			
	Number of Permissions	Number of Units	Floor Area (000 m <sup>2</sup> )	Average Floor Area per Unit (m <sup>2</sup> )	Number of Permissions	Number of Units	Floor Area (000 m <sup>2</sup> )	Average Floor Area per Unit (m <sup>2</sup> )	Number of Permissions	Number of Units	Floor Area (000 m <sup>2</sup> )	Average Floor Area per Unit (m <sup>2</sup> )	Number of Permissions	Number of Units	Floor Area (000 m <sup>2</sup> )	Average Floor Area per Unit (m <sup>2</sup> )
2004 Q 1	6,426	17,054	2,509	147.1	585	11,213	1,331	118.7	5,841	5,841	1,177	201.6	457	8,347	646	77.4
Q 2	7,123	18,653	2,770	148.5	640	12,170	1,443	118.6	6,483	6,483	1,328	204.8	425	7,313	543	74.2
Q 3	6,647	17,097	2,580	150.9	601	11,051	1,336	120.9	6,046	6,046	1,244	205.7	446	7,399	579	78.3
Q 4	5,555	16,772	2,428	144.8	551	11,768	1,392	118.3	5,004	5,004	1,036	207.1	403	9,018	691	76.6
<b>Year</b>	<b>25,751</b>	<b>69,576</b>	<b>10,287</b>	<b>147.8</b>	<b>2,377</b>	<b>46,202</b>	<b>5,502</b>	<b>119.1</b>	<b>23,374</b>	<b>23,374</b>	<b>4,785</b>	<b>204.7</b>	<b>1,731</b>	<b>32,077</b>	<b>2,459</b>	<b>76.7</b>
2005 Q 1	5,749	18,913	2,810	148.6	627	13,791	1,729	125.4	5,122	5,122	1,081	211.0	416	6,437	487	75.7
Q 2	6,244	21,938	3,186	145.2	756	16,450	2,027	123.2	5,488	5,488	1,159	211.1	472	6,880	553	80.4
Q 3	6,005	18,190	2,756	151.5	680	12,865	1,612	125.3	5,325	5,325	1,144	214.8	476	5,791	461	79.6
Q 4	5,516	16,609	2,526	152.1	583	11,676	1,452	124.3	4,933	4,933	1,075	217.8	435	4,594	352	76.7
<b>Year</b>	<b>23,514</b>	<b>75,650</b>	<b>11,278</b>	<b>149.1</b>	<b>2,646</b>	<b>54,782</b>	<b>6,820</b>	<b>124.5</b>	<b>20,868</b>	<b>20,868</b>	<b>4,458</b>	<b>213.6</b>	<b>1,799</b>	<b>23,702</b>	<b>1,854</b>	<b>78.2</b>
2006 Q 1	5,500	16,454	2,504	152.2	602	11,556	1,433	124.0	4,898	4,898	1,071	218.7	385	6,070	485	79.8
Q 2	5,259	15,014	2,413	160.7	563	10,318	1,359	131.7	4,696	4,696	1,055	224.6	327	4,083	316	77.5
Q 3	5,683	15,486	2,504	161.7	602	10,405	1,351	129.8	5,081	5,081	1,153	226.9	345	5,397	456	84.5
Q 4	4,967	13,054	2,105	161.3	485	8,572	1,086	126.7	4,482	4,482	1,019	227.3	283	3,197	263	82.2
<b>Year</b>	<b>21,409</b>	<b>60,008</b>	<b>9,526</b>	<b>158.7</b>	<b>2,252</b>	<b>40,851</b>	<b>5,228</b>	<b>128.0</b>	<b>19,157</b>	<b>19,157</b>	<b>4,298</b>	<b>224.3</b>	<b>1,340</b>	<b>18,747</b>	<b>1,520</b>	<b>81.1</b>
2007 Q 1	5,345	15,654	2,532	161.8	603	10,912	1,418	130.0	4,742	4,742	1,114	234.9	360	4,884	402	82.3
Q 2	5,240	18,201	2,918	160.3	556	13,517	1,809	133.8	4,684	4,684	1,109	236.8	387	5,787	478	82.7
Q 3	5,472	15,838	2,610	164.8	595	10,961	1,447	132.0	4,877	4,877	1,163	238.4	391	6,300	536	85.1
Q4	4,731	13,135	2,235	170.2	479	8,883	1,206	135.8	4,252	4,252	1,029	242.0	286	4,598	418	90.9
<b>Year</b>	<b>20,788</b>	<b>62,828</b>	<b>10,295</b>	<b>163.9</b>	<b>2,233</b>	<b>44,273</b>	<b>5,880</b>	<b>132.8</b>	<b>18,555</b>	<b>18,555</b>	<b>4,415</b>	<b>238.0</b>	<b>1,424</b>	<b>21,569</b>	<b>1,834</b>	<b>85.0</b>
2008 Q1	4,448	13,301	2,191	164.7	436	9,289	1,221	131.4	4,012	4,012	970	241.7	317	5,281	442	83.8
Q2	4,393	12,598	2,238	177.7	429	8,634	1,259	145.8	3,964	3,964	979	247.0	317	7,344	632	86.0

## Background Notes

**Scope and Background**

Details of the scope and background of this series were given in the March 1973 Statistical Bulletin. The Planning and Development Acts 1963 – 2000, imposes certain requirements on builders, developers and all other persons who propose to build or develop and specifies that a planning permission must be obtained from the relevant Planning Authority.

Local authority building (including housing) is exempt in the case where construction takes place in the Authorities' own area. Therefore, works undertaken by a local authority outside its functional area come within the scope of the Acts, and need planning permission. Planning permission is also needed for development by the State, except where the consultation procedures provided for in the Local Government (Planning and Development) Act, 1993 obtain (e.g. national security, public safety or order, the administration of justice etc.). This series only provides coverage where development is subject to the requirement to obtain planning permission.

This series is also available using the interactive tables in Database Direct on [www.cso.ie](http://www.cso.ie).

**Regions**

The Local Government Act 1991 (Regional Authorities) (Establishment) Order, 1993, which came into operation on 1 January 1994, established eight new Regions. The CSO has adopted these in place of the old Planning Regions as the basis for the regional breakdown of planning permissions data.

**Classification**

Planning permissions are classified by type of development, local authority district and by regional authority. A distinction is made between residential and non-residential building and civil engineering.

**Coverage**

Only final grants of permission or approvals are covered, i.e. only works which involve construction. The following permissions are excluded since they do not entail construction per se:

- Changes of a technical and business nature as distinct from a building or structural nature;
- Outline permission;
- Retention of an existing building;
- Changes to existing plan;
- Bye-law permission;
- Refusals - permissions subsequently granted on appeal by An Bord Pleanála are included.

**Rounding**

As the figures for floor area have been rounded there may be slight discrepancies between the sum of the constituent items and the totals shown.

Estimates are included where complete details of floor area size are not available.

**NUTS2 and NUTS3 regions**

The regional classifications in this release are based on the NUTS (Nomenclature of Territorial Units) classification used by Eurostat. The NUTS3 regions correspond to the eight Regional Authorities established under the Local Government Act, 1991 (Regional Authorities) (Establishment) Order, 1993, which came into operation on 1 January 1994. The NUTS2 regions, which were proposed by Government and agreed by Eurostat in 1999, are groupings of the NUTS3 regions. The composition of the regions is set out below.

**Border, Midlands and Western NUTS2 Region**

<b>Border</b>	Cavan Donegal Leitrim Louth Monaghan Sligo
<b>Midland</b>	Laoighis Longford Offaly Westmeath
<b>West</b>	Galway City Galway County Mayo Roscommon

**Southern and Eastern NUTS2 Region**

<b>Dublin</b>	Dublin City Dun Laoghaire-Rathdown Fingal South Dublin
<b>Mid-East</b>	Kildare Meath Wicklow
<b>Mid-West</b>	Clare Limerick City Limerick County North Tipperary
<b>South-East</b>	Carlow Kilkenny South Tipperary Waterford City Waterford County Wexford
<b>South-West</b>	Cork City Cork County Kerry